



**PROFESSIONAL AIR MOVER
OWNER'S MANUAL**

**P-200T / P-200AT / P-230AT
(115V / 60Hz)**

XPOWER MANUFACTURE, INC.
220 Clary Avenue
San Gabriel, CA 91776, USA
Tel: 626-285-3301, Fax: 626-285-3302
www.xpower.ws



PLEASE READ AND SAVE THESE INSTRUCTIONS

Index

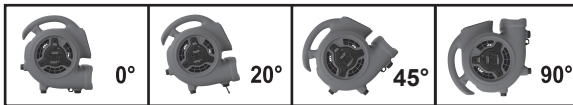
Introduction	2
Operation / Instructions.....	3
Safety Instructions.....	4
Maintenance Instructions / Troubleshooting.....	5
Specifications.....	6
Warranty / Service	7
Parts List	8
Warranty Registration Form	10

Introduction

XPOWER Mini Air Movers are certified professional level multifunctional utility blower fans with the most efficient engineering design

Features:

- Low power draw with high velocity air flow from 600 to 800 CFM
- Super quiet motor and super lightweight
- Easy carrying handle and stackable up to 4 units high.
- Easy and quick to disassemble for thorough cleaning and service.
- Safety certified 10' power cord.
- Easy cord wrap on handle.
- 3-hour timer.
- 3-speed switch.
- Durable and rugged housing.
- 4 air flow positions (0°, 20° Kickstand, 45° and 90°).



Operation / Instructions

XPOWER Mini Air Movers are intended to move air and to dry small areas where the large air mover is not applicable such as crawl spaces, inside cabinets, under counters, inside ceilings, basements, etc. The Mini Air Mover can also be used as high velocity fan for household indoor/outdoor use.

1. XPOWER Mini Air Movers are shipped ready-to-use. Prior to plugging the unit into the power source, inspect completely for any shipping damage.
2. Plug the electrical cord into the power outlet.
3. Carefully place the Mini Air Mover unit on a stable, flat dry surface.
4. The unit is capable to be used at 4 different angles to direct air flow.
5. Turn the switch to desired speed and make sure unit operates normally.
6. Mini Air Movers in operation must be supervised at all times.



Timer Instruction (For P-200AT & P-230AT models)

Use the Timer to set the preferred time from 1 min to 180 min.



AIR MOVER STORAGE:

Air Movers can be stacked (up to 4) on their sides for storage.

NOTICE:
Stacking feature is not secure for transportation.

Safety Instructions

1. To prevent electric shock, do not operate the unit in standing water. Never plug in or unplug the unit with wet hands or while standing in water.
2. To avoid risk of injury, do not direct air flow at face or body.
3. To reduce the risk of fire or electric shock, do not use the Mini Air Mover with any solid-state speed control device.
4. Use only with GFCI protected receptacles. Please contact a qualified electrician for verification and / or installation of a GFCI receptacle if necessary.
5. Do not operate the Mini Air Mover with a damaged cord or plug. Discard the unit or return it to an authorized service facility for examination and/or repair.
6. Unplug the Mini Air Mover from the power supply before servicing or cleaning.
7. Do not run the power cord under carpeting. Do not cover the power cord with throw rugs, runners, or similar coverings. Place the power cord away from traffic area to prevent tripping.
8. Do not allow children to play with or around the Mini Air Mover at any time.
9. Do not move or carry the Mini Air Mover while unit is operating.
10. Mini Air Movers in operation must be supervised at all times.

Maintenance Instructions

1. To keep the Mini Air Mover clean, use a damp cloth to wipe the surface of the housing.
2. Never clean the Mini Air Mover with water.
3. When not in use, unplug and store the Mini Air Mover in a dry indoor place out of reach of children.
4. Always disconnect the Mini Air Mover from its power source before performing any maintenance or cleaning.

Troubleshooting

For any problems not listed below, call your local distributor or contact our Service Department.

PROBLEM	POSSIBLE CAUSE	SOLUTION
Air Mover not running	No power input	Plug in the Air Mover; check circuit breaker
	Switch not turned on	Turn on switch
	Air Mover fan wheel jammed	Remove material jamming fan wheel
	Intake or exhaust blocked	Turn unit off and allow to cool, then remove blockage
Air Mover vibrates	Accumulation of dirt on fan blades	Clean Air Mover fan blades

Specifications

Model	P-200T	P-200AT	P-230AT
Volt / Frequency	115V / 60Hz	115V / 60Hz	115V / 60Hz
Power	1/8 HP	1/8 HP	1/5 HP
Amp	1.5 Amps	1.5 Amps	2.3 Amps
Rated Airflow (On High)	600 CFM	600 CFM	800 CFM
RPM (Low / Medium / High)	1100 / 1250 / 1500	1100 / 1250 / 1500	1000 / 1250 / 1500
Speeds	Three	Three	Three
Built-In Power Outlet / Daisy Chain	No	Yes	Yes
3-Hour Timer	Yes	Yes	Yes
Positions	4 (0°, 20° Kickstand, 45°, 90°)	4 (0°, 20° Kickstand, 45°, 90°)	4 (0°, 20° Kickstand, 45°, 90°)
Unit / Box Weight	8.5 Lbs. / 9.7 Lbs.	8.7 Lbs. / 9.9 Lbs.	9.9 Lbs. / 11.1Lbs.
Unit / Box Size (L x W x H)	10.7"x12.4"x13.3" / 13.6"x12.8"x11"	10.7"x12.4"x13.3" / 13.6"x12.8"x11"	10.7"x12.4"x13.3" / 13.6"x12.8"x11"
Power Cord (Length/Size)	10'/18AWG	10'/14AWG	10'/14AWG
Overheating Protection	Thermally Protected	Thermally Protected	Thermally Protected
Housing	Injection Mold / Polypropylene (PP)	Injection Mold / Polypropylene (PP)	Injection Mold / Polypropylene (PP)
Safety Certificates	ETL / C-ETL	ETL / C-ETL	ETL / C-ETL

XPOWER LIMITED WARRANTY

XPOWER Warranty covers the unit from defects in materials and craftsmanship. The Warranty covers normal use for a term of one year from the original date of purchase including parts, labor and one way shipping.

Important !

This Warranty does not cover signs of misuse including, but not limited to, a unit that has been dropped, subjected to water damage, tampered with, improper voltage use and unauthorized maintenance and repairs. The POWER CORD is not covered by the warranty.

Service

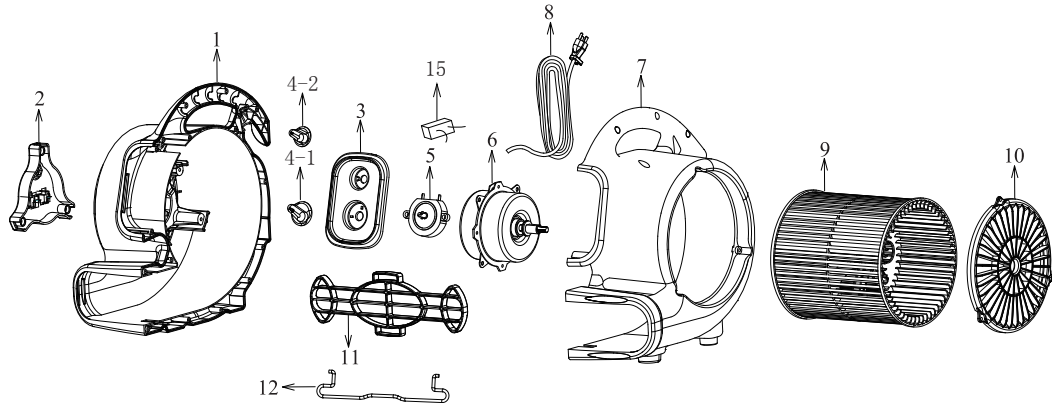
In order to receive service or replacement parts under warranty, you must:

- A. Call for a Return Merchandise Authorization (RMA) number through Service Department and obtain ship back instructions.
- B. Have original proof of purchase.
- C. Use original none damaged packaging or Industrial certified packaging method.

The end user will be responsible to ship the unit (with the RMA number showing on the shipping label) to the XPOWER Service Department. Upon inspection, we will advise you of the repairs needed and the cost (if applicable). XPOWER will provide repair or replacement parts depending on warranty.

200 Series Parts List

Item No.	Parts Name	Item No.	Parts Name
1	Left Housing	2	Grid Cover (Motor Side)
3	Timer & Switch Plate	4-1 & 4-2	Switch Knob & Timer Knob
5	Switch	6	Motor
7	Right Housing	8	Power Cord
9	Fan	10	Grid Cover (Fan Side)
11	Air Outlet Grid Cover	12	Kick Stand
13	Rubber Feet (Not Shown)	14	Screws and Nuts (Not Shown)
15	Capacitor		



More XPOWER products available:

Air Movers

400 Series: P-400, X-400, X-400A, X-430TF

600 Series: P-600, X-600, X-600A, P-630, X-630

800 Series: P-800(H), X-800(H), X-800TF(H), P-830(H), X-830(H)

Force Dryers & Wall Dryer

B-3J, B-5J, B-5W

Blowers

BR-2C01A, BR-201A, BR-232A, BR-252A, BR-282A

Axial Fan

X-41ATR

Pet Dryers

B-2, B-3, B-4, B-5, B-16, X-430TF+MDK, X-800TF+MDK

220~240V models are also available for oversea markets. please check our website XPOWER.WS for more detail...

WARRANTY REGISTRATION

Please complete and mail or fax this form for your product warranty. For multiple units, please list serial numbers on a separate sheet of paper. Address: XPOWER MANUFACTURE, INC, 220 Clary Avenue San Gabriel, CA 91776, USA
Tel: (626) 285-3301; Fax: (626) 285-3302

Company Name / Contact Person / Title _____

Address _____ City _____

State / Province _____ Zip _____ Country _____

Phone _____ Fax _____ E-mail _____

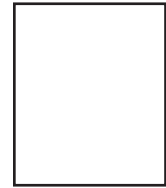
Model # _____ **Serial #:** _____

Date of Purchase ____ / ____ / ____ **Purchased From** _____

Additional Comments / Suggestions _____



From: _____



TO:
XPOWER MANUFACTURE, INC.
220 Clary Avenue
San Gabriel, CA 91776, USA
Tel: 626-285-3301, Fax: 626-285-3302





PROFESSIONAL AIR MOVER OWNER'S MANUAL

P-200T / P-200AT / P-230AT
(115V / 60Hz)

XPOWER MANUFACTURE, INC.
220 Clary Avenue
San Gabriel, CA 91776, USA
Tel: 626-285-3301, Fax: 626-285-3302
www.xpower.ws



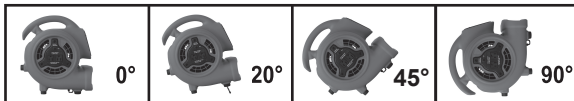
PLEASE READ AND SAVE THESE INSTRUCTIONS

Introduction

XPOWER Mini Air Movers are certified professional level multifunctional utility blower fans with the most efficient engineering design

Features:

- Low power draw with high velocity air flow from 600 to 800 CFM
- Super quiet motor and super lightweight
- Easy carrying handle and stackable up to 4 units high.
- Easy and quick to disassemble for thorough cleaning and service.
- Safety certified 10' power cord.
- Easy cord wrap on handle.
- 3-hour timer.
- 3-speed switch.
- Durable and rugged housing.
- 4 air flow positions (0°, 20° Kickstand, 45° and 90°).



Index

Introduction	2
Operation / Instructions.....	3
Safety Instructions.....	4
Maintenance Instructions / Troubleshooting.....	5
Specifications.....	6
Warranty / Service	7
Parts List	8
Warranty Registration Form	10

Operation / Instructions

XPOWER Mini Air Movers are intended to move air and to dry small areas where the large air mover is not applicable such as crawl spaces, inside cabinets, under counters, inside ceilings, basements, etc. The Mini Air Mover can also be used as high velocity fan for household indoor/outdoor use.

1. XPOWER Mini Air Movers are shipped ready-to-use. Prior to plugging the unit into the power source, inspect completely for any shipping damage.
2. Plug the electrical cord into the power outlet.
3. Carefully place the Mini Air Mover unit on a stable, flat dry surface.
4. The unit is capable to be used at 4 different angles to direct air flow.
5. Turn the switch to desired speed and make sure unit operates normally.
6. Mini Air Movers in operation must be supervised at all times.



AIR MOVER STORAGE:

Air Movers can be stacked (up to 4) on their sides for storage.

NOTICE:
Stacking feature is not secure for transportation.



Timer Instruction (For P-200AT & P-230AT models)

Use the Timer to set the preferred time from 1 min to 180 min.

Safety Instructions

1. To prevent electric shock, do not operate the unit in standing water. Never plug in or unplug the unit with wet hands or while standing in water.
2. To avoid risk of injury, do not direct air flow at face or body.
3. To reduce the risk of fire or electric shock, do not use the Mini Air Mover with any solid-state speed control device.
4. Use only with GFCI protected receptacles. Please contact a qualified electrician for verification and / or installation of a GFCI receptacle if necessary.
5. Do not operate the Mini Air Mover with a damaged cord or plug. Discard the unit or return it to an authorized service facility for examination and/or repair.
6. Unplug the Mini Air Mover from the power supply before servicing or cleaning.
7. Do not run the power cord under carpeting. Do not cover the power cord with throw rugs, runners, or similar coverings. Place the power cord away from traffic area to prevent tripping.
8. Do not allow children to play with or around the Mini Air Mover at any time.
9. Do not move or carry the Mini Air Mover while unit is operating.
10. Mini Air Movers in operation must be supervised at all times.

- 4 -

Specifications

Model	P-200T	P-200AT	P-230AT
Volt / Frequency	115V / 60Hz	115V / 60Hz	115V / 60Hz
Power	1/8 HP	1/8 HP	1/5 HP
Amp	1.5 Amps	1.5 Amps	2.3 Amps
Rated Airflow (On High)	600 CFM	600 CFM	800 CFM
RPM (Low / Medium / High)	1100 / 1250 / 1500	1100 / 1250 / 1500	1000 / 1250 / 1500
Speeds	Three	Three	Three
Built-In Power Outlet / Daisy Chain	No	Yes	Yes
3-Hour Timer	Yes	Yes	Yes
Positions	4 (0°, 20° Kickstand, 45°, 90°)	4 (0°, 20° Kickstand, 45°, 90°)	4 (0°, 20° Kickstand, 45°, 90°)
Unit / Box Weight	8.5 Lbs. / 9.7 Lbs.	8.7 Lbs. / 9.9 Lbs.	9.9 Lbs. / 11.1Lbs.
Unit / Box Size (L x W x H)	10.7"x12.4"x13.3" / 13.6"x12.8"x11"	10.7"x12.4"x13.3" / 13.6"x12.8"x11"	10.7"x12.4"x13.3" / 13.6"x12.8"x11"
Power Cord (Length/Size)	10'/18AWG	10'/14AWG	10'/14AWG
Overheating Protection	Thermally Protected	Thermally Protected	Thermally Protected
Housing	Injection Mold / Polypropylene (PP)	Injection Mold / Polypropylene (PP)	Injection Mold / Polypropylene (PP)
Safety Certificates	ETL / C-ETL	ETL / C-ETL	ETL / C-ETL

- 6 -

Maintenance Instructions

1. To keep the Mini Air Mover clean, use a damp cloth to wipe the surface of the housing.
2. Never clean the Mini Air Mover with water.
3. When not in use, unplug and store the Mini Air Mover in a dry indoor place out of reach of children.
4. Always disconnect the Mini Air Mover from its power source before performing any maintenance or cleaning.

Troubleshooting

For any problems not listed below, call your local distributor or contact our Service Department.

PROBLEM	POSSIBLE CAUSE	SOLUTION
Air Mover not running	No power input	Plug in the Air Mover; check circuit breaker
	Switch not turned on	Turn on switch
	Air Mover fan wheel jammed	Remove material jamming fan wheel
	Intake or exhaust blocked	Turn unit off and allow to cool, then remove blockage
Air Mover vibrates	Accumulation of dirt on fan blades	Clean Air Mover fan blades

- 5 -

XPOWER LIMITED WARRANTY

XPOWER Warranty covers the unit from defects in materials and craftsmanship. The Warranty covers normal use for a term of one year from the original date of purchase including parts, labor and one way shipping.

Important !

This Warranty does not cover signs of misuse including, but not limited to, a unit that has been dropped, subjected to water damage, tampered with, improper voltage use and unauthorized maintenance and repairs. The POWER CORD is not covered by the warranty.

Service

In order to receive service or replacement parts under warranty, you must:

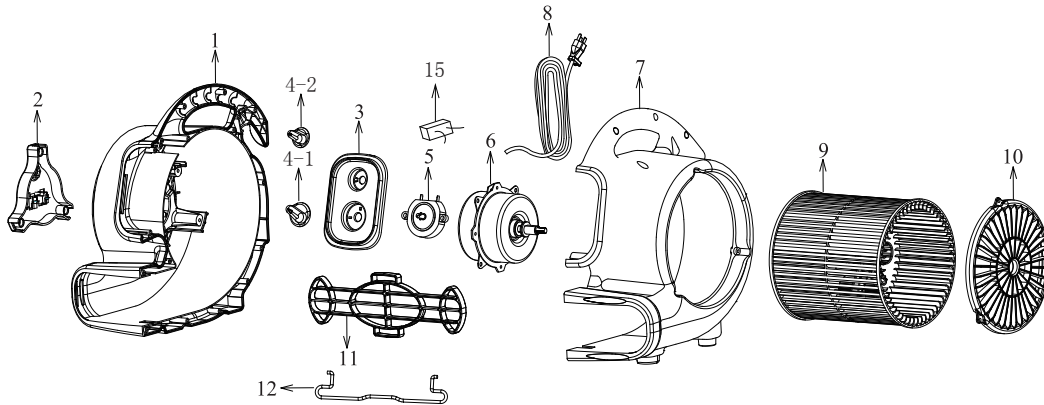
- A. Call for a Return Merchandise Authorization (RMA) number through Service Department and obtain ship back instructions.
- B. Have original proof of purchase.
- C. Use original none damaged packaging or Industrial certified packaging method.

The end user will be responsible to ship the unit (with the RMA number showing on the shipping label) to the XPOWER Service Department. Upon inspection, we will advise you of the repairs needed and the cost (if applicable). XPOWER will provide repair or replacement parts depending on warranty.

- 7 -

200 Series Parts List

Item No.	Parts Name	Item No.	Parts Name
1	Left Housing	2	Grid Cover (Motor Side)
3	Timer & Switch Plate	4-1 & 4-2	Switch Knob & Timer Knob
5	Switch	6	Motor
7	Right Housing	8	Power Cord
9	Fan	10	Grid Cover (Fan Side)
11	Air Outlet Grid Cover	12	Kick Stand
13	Rubber Feet (Not Shown)	14	Screws and Nuts (Not Shown)
15	Capacitor		



- 8 -

WARRANTY REGISTRATION

Please complete and mail or fax this form for your product warranty. For multiple units, please list serial numbers on a separate sheet of paper. Address: XPOWER MANUFACTURE, INC, 220 Clary Avenue San Gabriel, CA 91776, USA
Tel: (626) 285-3301; Fax: (626) 285-3302

Company Name / Contact Person / Title _____

Address _____ City _____

State / Province _____ Zip _____ Country _____

Phone _____ Fax _____ E-mail _____

Model # _____ Serial #: _____

Date of Purchase ____/____/____ Purchased From _____

Additional Comments / Suggestions _____



More XPOWER products available:

Air Movers

400 Series: P-400, X-400, X-400A, X-430TF

600 Series: P-600, X-600, X-600A, P-630, X-630

800 Series: P-800(H), X-800(H), X-800TF(H), P-830(H), X-830(H)

Force Dryers & Wall Dryer

B-3J, B-5J, B-5W

Blowers

BR-2C01A, BR-201A, BR-232A, BR-252A, BR-282A

Axial Fan

X-41ATR

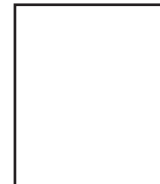
Pet Dryers

B-2, B-3, B-4, B-5, B-16, X-430TF+MDK, X-800TF+MDK

220~240V models are also available for oversea markets. please check our website XPOWER.WS for more detail...

- 9 -

From: _____



TO:
XPOWER MANUFACTURE, INC.
220 Clary Avenue
San Gabriel, CA 91776, USA
Tel: 626-285-3301, Fax: 626-285-3302

