



VANITY PLANET

# Raedia 2.0

Face and Body Cleansing System

User Guide

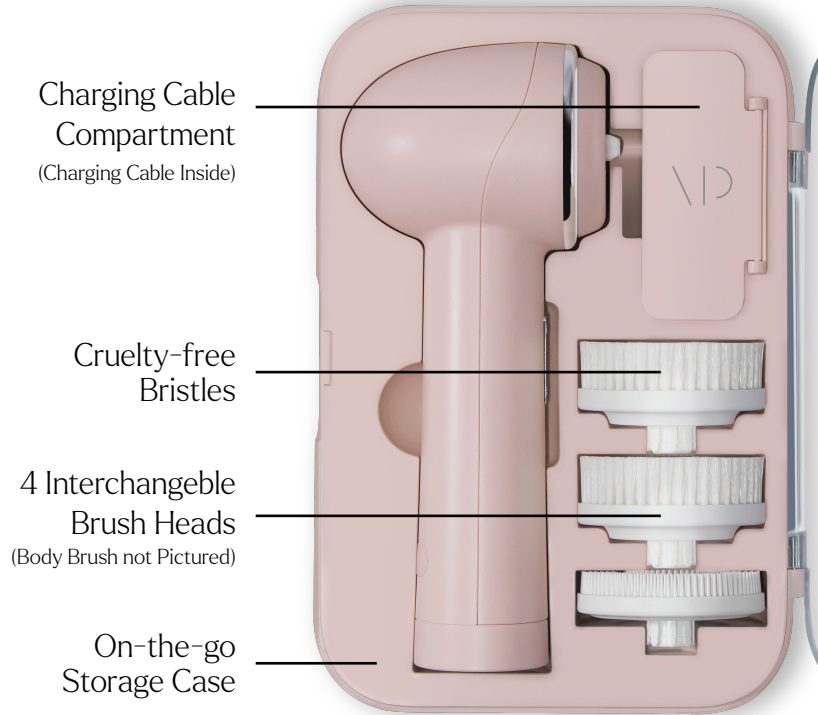
Experience spa-level, custom facial and body cleansing at home.

## Features

- Raedia 2.0 offers a fresh design so the unit can stand on its own
- 4 interchangeable cleansing brush heads
- Brush heads move in opposite direction for a deeper clean
- Gently purify your pores of hard-to-reach grime, makeup, debris than can lead to breakouts
- Shower Friendly Water resistant
- Store Safely: Includes a hard protective, ventilated case for daily use, storage, and travel
- Cordless: Rechargeable unit (charging chord included)

Vanity Planet's Raedia 2.0 is a dual-speed spin brush designed to cleanse and exfoliate the face and body. Four interchangeable brush heads include a Cleansing Brush, Exfoliating Brush, Silicone Brush, and Body Brush—ensuring a spa-level polished clean for even the most sensitive skin. Designed for daily use and ease of travel, your cleansing system includes a sleek ventilated case for antibacterial daily storage. Your unit also offers two-speed modes for customizable cleansing and exfoliation.

# Your Raedia 2.0



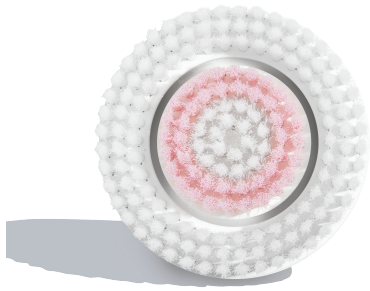
# Getting Started

## USING YOUR BRUSH HEADS

1. Remove makeup with a cleansing towelette or wipe before using the attachments to avoid staining the bristles.
2. Attach your desired brush head.
3. Dampen your skin with water.
4. Apply cleanser directly to your skin or the brush head. Avoid using exfoliators with large, jagged particles.
5. Hold the device so the brush head is flush against your skin, then press the power button to select a mode.
6. Gently glide Raedia 2.0 over your skin's surface in a rotating motion, careful not to apply too much force to the brush head as this may cause irritation to your skin
7. Power button press once to turn on, press a second time to switch the direction of the brush head.
8. On the lower part of the power button press once for low speed, and press a second time for higher speed

## CHARGING

Plug in included chord when battery is low to recharge your Raedia 2.0.



## Daily Cleansing Brush

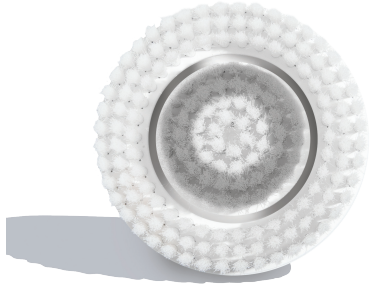
This brush gently lifts away debris and dead skin cells better than manual makeup cleansing.

- Ultra-soft bristles offer a complete (yet gentle) cleansing experience.
- Use daily for radiant skin.
- Pairs perfectly with a mild cleanser.

## Silicone Brush

Use daily to gently cleanse sensitive skin and acne-prone skin to loosen dirt and unclog pores.

- Made with soft silicone bristles.
- Use it daily.
- Pairs perfectly with a mild or hydrating cleanser.



## Exfoliating Brush

This brush removes deep-seated dirt and debris from the lower layers to help with acne-prone skin.

- Firmer bristles offer a deeper clean
- Use 2-3 times a week
- Pair it with a mild cleanser and avoid harsh exfoliants

## Body Brush

This larger brush is designed to cleanse and exfoliate the entire body—including arms, back, legs and torso.

- Firm, massaging bristles.
- Use daily to glow from head to toe.
- Pairs perfectly with a mild cleanser.





Embark on a  
whole-body  
cleansing routine.



# Taking Care

To keep your Raedia 2.0 in good shape, don't use abrasive cleaners or chemicals to clean any part of the device. Make sure to store it in a cool, dry place.

## **CLEANING THE BRUSH HEADS**

Rinse the brush heads thoroughly after each use. If they are discolored from makeup or debris, clean them with warm, soapy water.

## **CLEANING THE DEVICE**

To remove any residue or buildup, clean the base and handle once a week by taking a slightly damp cloth and wiping down the body of the device.

# Tips & Warnings

To experience the full range of benefits from your Vanity Planet Raedia 2.0, we recommend the following:

- Do not share your brush heads with anyone.
- Do not submerge the handle or unit in water.
- Do not use with harsh exfoliating cleansers or physical exfoliants such as nuts, shells, seeds or other jagged exfoliating particles.
- Using your Raedia 2.0 to remove makeup may stain the bristles of the brush head; if discoloration occurs, clean the brush head with soap and water.
- For best results, change your brush heads every 2 to 3 months.

**NOTE:** If you are under a doctor's care for any skin condition or if you think you may have a skin condition, please consult your physician before use.

# One-Year Warranty

All of our products come with a one-year warranty. Should the product contain manufacturer defects or if it does not work upon arrival, this warranty covers a max of two replacements within one year from the date you received your order. This warranty does not cover physical damage from misuse or accidental damage to the product. We will only honor warranty claims of purchases made from Vanity Planet or authorized dealers.

## **30-DAY CUSTOMER SATISFACTION GUARANTEE**

If it doesn't work for you, it doesn't work for us.

That's our Customer Satisfaction Guarantee. If you are not completely satisfied with your Vanity Planet purchase, please review our return and refund policies on our website.

**VANITYPLANET.COM**

**INFO@VANITYPLANET.COM**

There are no express warranties except as listed above. This warranty gives you specific legal rights and you may have other rights which vary from state to state.

Please do not return this product to the retailer. Contact us directly for warranty service.