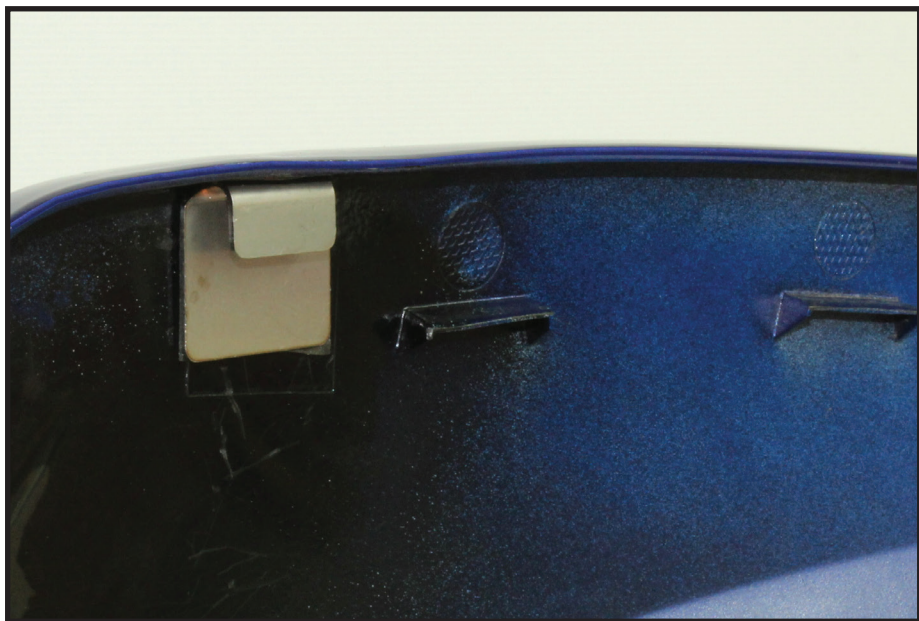




clearwater
LIGHTS™



Installation Manual

BMW R1200RT (water cooled)

Side Panel Repair Kit

Patent Pending



Made in USA

Congratulations!

If you're reading this, you probably just broke an \$800 fairing on your new BMW RT.

Don't worry, we've been there too...

Luckily we've come up with a solution.

We are happy to introduce our R1200RTW panel tab repair kit!

The kit consists of (4) specially designed, laser cut and formed replacement tabs. These are made from Stainless Steel sheet metal and folded in a shape to replace the existing tabs. Installation is easy but requires a steady hand with a dremel tool.

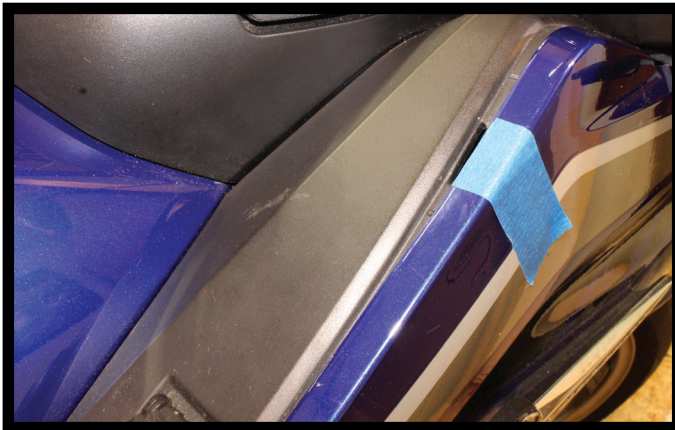
Best,

Clearwater Team

Step: 1-2



Remove panel and set shiny side down, on a table protected by a towel or other soft cloth. Carefully grind off the remaining plastic tab to reveal a smooth surface that resembles the part of the panel without the tab. Clean this channel out to allow the new part to fit flush.

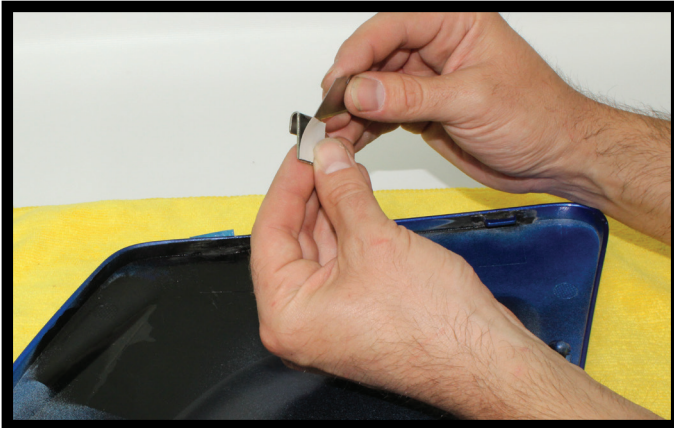


Fit fairing to bike and put a piece of masking tape on fairing, marking the spot where the old fairing tab lines up with the fairing tab hole on the bike.

Step: 3-4



Remove the fairing and use denatured alcohol to clean the surface where the new tab will attach.



Using a sharp edge, peel off the adhesive covering on the back of the tab. Use a hair dryer to warm up the adhesive and the fairing where the tab will attach.

Step: 5-6



Carefully align the new tab to the center of the masking tape location. Press new tab in place. Hold in place with medium pressure for 10 seconds. The adhesive tape we use is very strong and the bond increases in strength after about 24 hours. It is the same tape that auto manufacturers use to attach model badges on trunk lids. If applied correctly, it will last a very long time.



Install repaired panel.

Thanks for your support.

A large, empty rectangular box with a thin black border, occupying most of the page. It is intended for the user to write their notes.

A large, empty rectangular box with a thin black border, occupying most of the page. It is intended for the user to write their notes.

Thank you for purchasing your **Clearwater Lights**. We hope this product will help make you a safer rider. Please feel free to send us comments or suggestions at any time. We learn from you. Visit our website for more exciting products to help you see better at night.

Ride safe!

Sincerely,

Glenn and the team at Clearwater.



The Clearwater Company - 11305 Sunrise Gold Circle, Suite D
Rancho Cordova, CA 95742
Phone: (916) 852-7029 | Fax: (916) 852-9410 | www.clearwaterlights.com

Version 1.2 5/8/17