



clearwater
LIGHTS™



B179 Bracket Installation

BMW R1200-R1250 RTW (2014+)

LED Light Kit

Dimmable

Patent Pending



Made in USA

Bike Preparation

Please be sure to read our instructions thoroughly before attempting installation.

DIFFICULTY OF BRACKET INSTALLATION:

Easy Medium **Hard** Extreme

- This installation is particularly difficult. Body fairings can be easily damaged while being removed. Special care must be exercised while removing any panels. Take your time and all will be fine.
- Check the parts list supplied with your kit to be sure all parts are handy.

Before proceeding with installation:

- (1) Park the motorcycle on hard pavement or concrete to insure the bike will be stable during the installation. If you can mount the bike on a stand with tie-down straps, this will help secure the motorcycle.
- (2) Follow the manufacturers guidelines for disconnecting the battery. To prevent possible shortage and injury, always disconnect the negative terminal first.

Parts List

2 Krista/Eirica/Sevina Lights



B300

2 Mod Bracket



B724 - KES CANopener HARNESS BAG

KES CAN Harness



B805 - KES CONNECTION BAG

2 12" Zip Ties



6" Zip Ties



1 Ring Terminal



1 Zip Tie Pad



B713 - CAN3 BAG

1 5' Long Data Cable



1 CAN-Opener



B179 - HARDWARE BAG

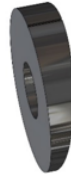
1 Right Bracket



1 Left Bracket



4 M10 Bevel Washer



1 M5 Ballpoint L-Wrench



4 #2 Spacer w/ adhesive



2 M10 x 30 BH



2 M10 washers



4 M8 x 16 BH



4 M8 Washer



2 M10 Nylock



4 M6 x 40



2 M5 x 16 SH



4 M6 Washer

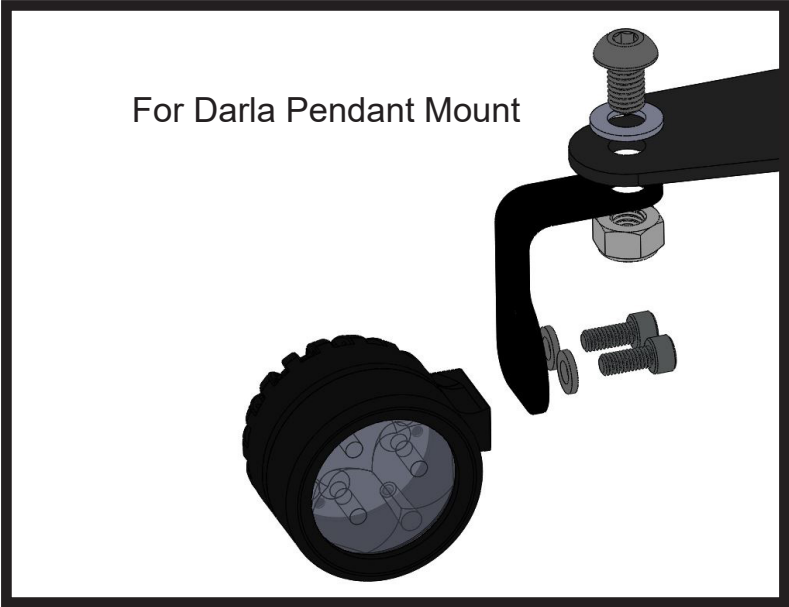
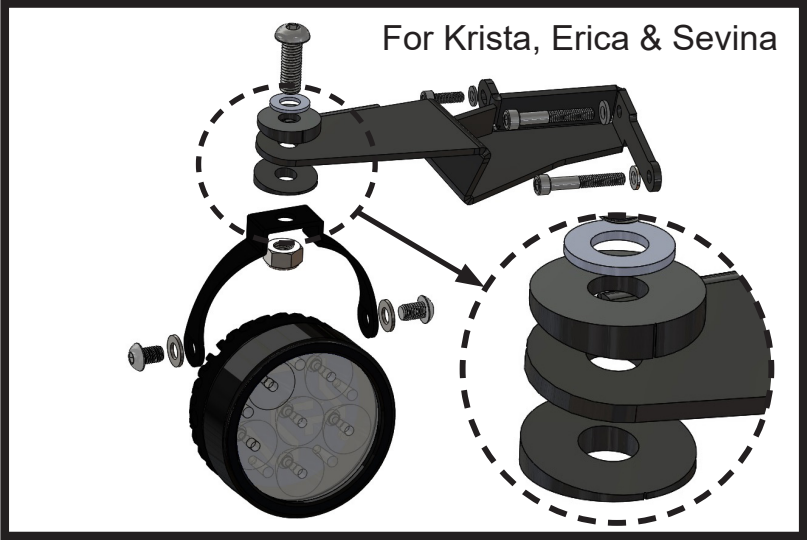


2 M5 Shoulder Washer



Exploded Diagram

****NOTE****
This manual demonstrates the installation process on the right side of the bike.
The same process can be used on the left.



Disassembly

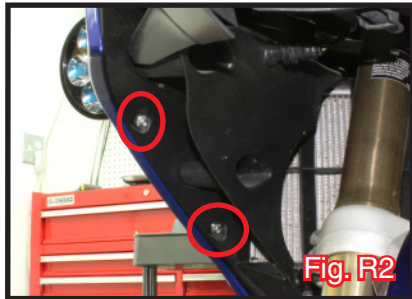
****IMPORTANT****

To access the bracket mounting holes, the front fairings must be removed. Extra caution must be exercised while removing these. They can easily be broken while being removed or installed, and are very expensive to replace!

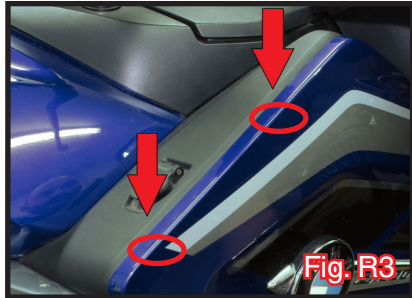
Ultimately, the light will be mounted to the bracket as seen in [Fig. R1]. The bracket will mount to the frame behind the fairing with (3) bolts



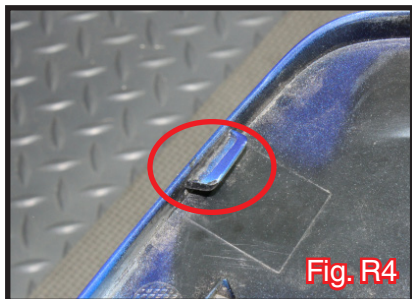
First, remove the two bolts under the fairing using a #25 torx wrench.



Before removing the fairing, it is important to realize the upper portion is held on by (2) slip-under tabs. Pulling from the top can break these two tabs. [Fig. R3]



[Fig. R4] Shows what one of the top tabs looks like.

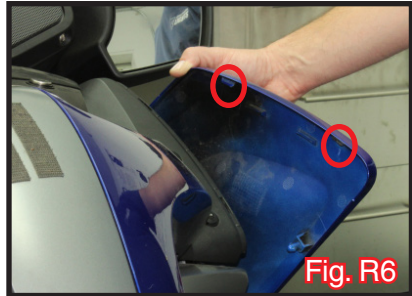


Disassembly

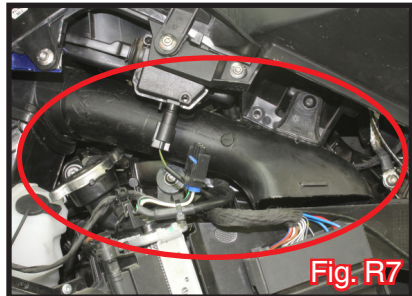
Very carefully, pull the lower portion of the fairing outward, clearing out the pop-out tabs marked with arrows in [Fig. R5].



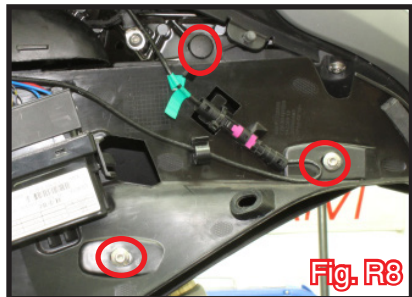
Once lower portion of the fairing is pulled out, slowly lift out top tabs. Make sure fairing doesn't snag on anything while lifting up. (If done incorrectly, the top tabs can easily break). [Fig. R6]



With the fairing removed, the air inlet tube, circled in [Fig. R7] will be visible.

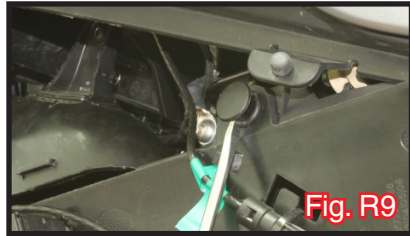


Removal of the air inlet tube can be made easier by first removing the (2) circled screws and pull out tab holding down the body panel marked in [Fig. R8]. The front portion of the lower body panel can then be pulled

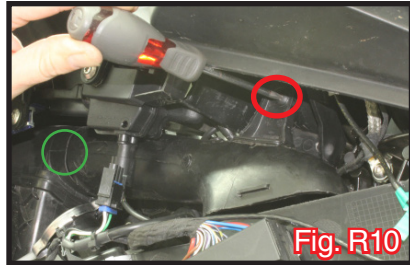


Disassembly

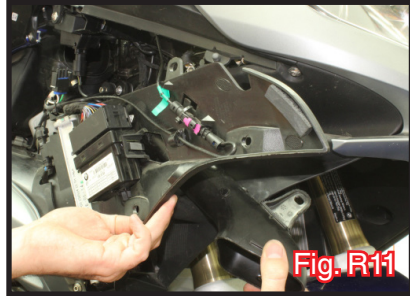
Use flat head screwdriver to wedge out pull out tab. [Fig. R9]



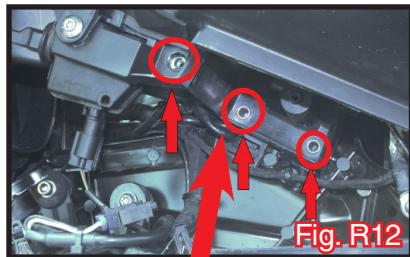
A #20 torx wrench can be used to remove the screw holding down the air inlet tube. Newer models of bikes have a inlet tube tab holding it in place (circled in green). A small flat head screwdriver can be used to push this tube tab down.



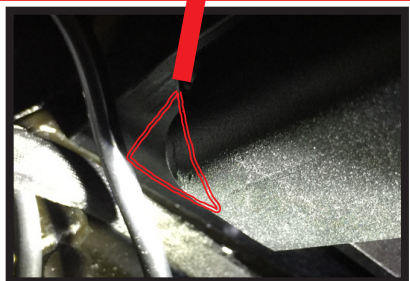
While pulling out the front of the body panel, the air inlet tube can be pulled out and slipped through the gap formed by the body panel. [Fig. R11]



With the tube removed, (3) body bolts will have to be removed from the holes circled in [Fig. R12]. These threaded holes will be used to mount the light bracket.

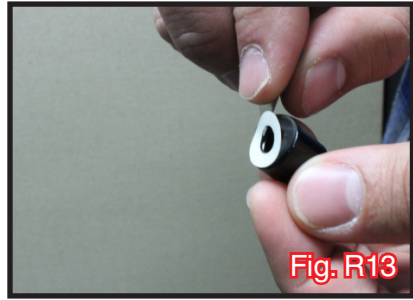


NOTE: For 2021 RT models, a slight modification to the plastic sub-frame on the bike is required for the mirror mount to seat correctly. We recommend cutting away the corner triangle section away as highlighted in this photo.



Bracket Installation

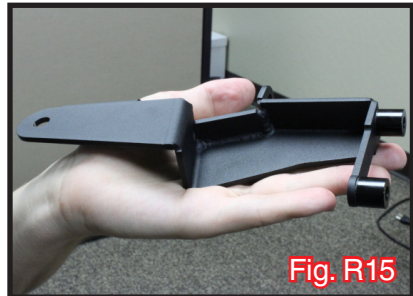
To make installation of the bracket easier, it is recommended attaching the spacers to the bracket with the included adhesive ring. Start by peeling the white sticker away from the tape on the spacer. [Fig. F13]



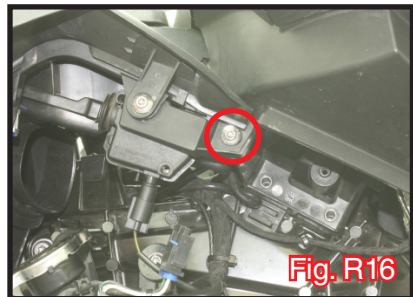
Use the included M6 bolts to line up the back (2) holes of the bracket to the adhesive side of the spacers. [Fig. R14]



Attach both spacers to the two bracket holes seen in [Fig. R15].

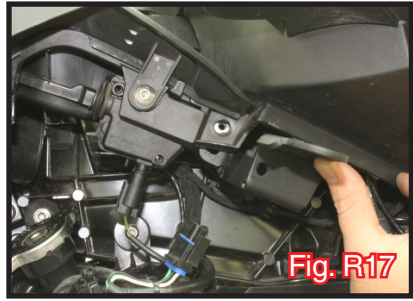


Remove bolt circled in [Fig. R16] with a #25 torx wrench

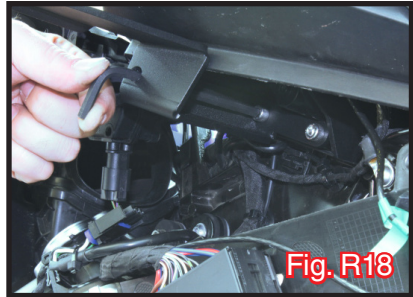


Bracket Installation

Attach bracket to the body by wedging the small tab of the bracket in between the body and clip-on-thread in the location of the bolt removed in the previous figure (Fig. R15). Simultaneously line up backholes of bracket (with spacers on them) to the back (2) holes of body. [Fig. R17]

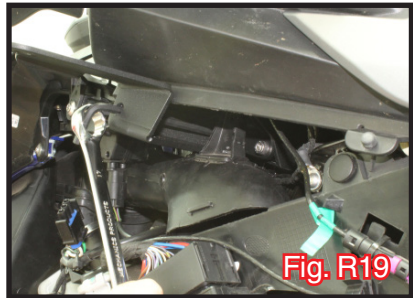


Insert included M5x16 bolt with M5 shoulder washer into small tab hole in bracket, and the included M6x40 bolts with washers into back (2) holes. (A drop of oil on the threads can be helpful.) Tighten bolts using included ballpoint allen wrench. [Fig. R18]

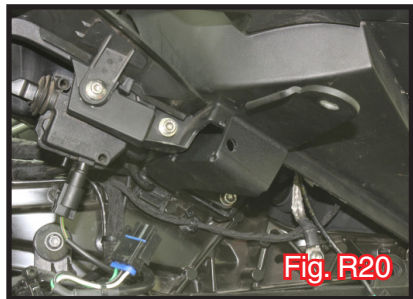


****PRO TIP****

Use a wrench to get extra leverage when tightening bracket bolt. **USE THIS METHOD WITH EXTREME CAUTION AS THREAD INSERTS CAN STRIP.** [Fig. R19]

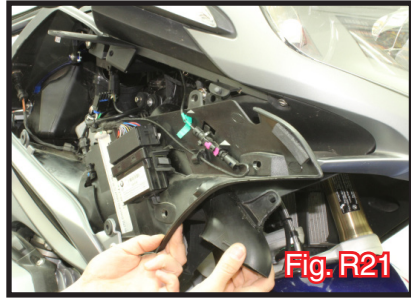


[Fig. 20] This shows what the bracket attached with the single M5 bolt and (2) M6 bolts will look like.

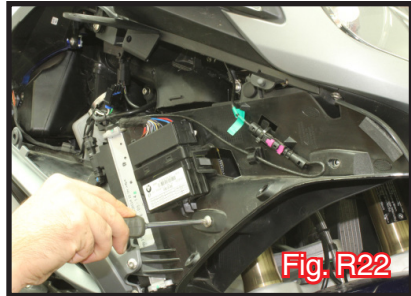


Reassembly

Reinstall the air inlet tube in the same way it was removed. Be sure to reattach the torx bolt holding down the tube. [Fig. R21]



Reattach (2) screws and tab holding in lower body panel. [Fig. R22]



Please refer to the installation manual provided for information on light harness installation. [Fig. R23] shows what lights and wiring harness will look like before fairing is reinstalled.



To allow for proper light clearance, assemble beveled washers with light bracket as seen in . [Fig. R24]. Be sure to align notches on the front and back of the beveled washers.



Reassembly

To reinstall fairing, first line up top tabs with with slots on body. If not inserted properly, the tabs can break very easily. Also, be aware of wire placement for the light. [Fig. R25]



After top tabs are aligned, line-up and push in (2) lower tabs. The light bracket will be fairly tight against the fairing. [Fig. R26]



Reinstall torx bolts under fairing assembly. [Fig. R27]



Align and tighten light bracket as instructed in R1200RTW installation manual. Be sure to add a drip loop. [Fig. R28]



Thank you for purchasing your **Clearwater Lights**. We hope this product will help make you a safer rider. Please feel free to send us comments or suggestions at any time. We learn from you. Visit our website for more exciting products to help you see better at night.

Ride safe!

Sincerely,

Glenn and the team at Clearwater.



The Clearwater Company - 11305 Sunrise Gold Circle, Suite D
Rancho Cordova, CA 95742
Phone: (916) 852-7029 | Fax: (916) 852-9410 | www.clearwaterlights.com

As Of 11/2/2021