



GENERAL ENGINEERING AND RESEARCH

Certificate of Analysis

Amine Functionalized 100nm Silica Nanoparticles in Ethanol

Product Detail:

Solids Concentration: 10mg/mL

Solution: Ethanol

Silica Nanoparticle Properties:

Mean Particle Diameter (SEM):

100nm+/-10nm

Coefficient of Variation: <20%

Morphology: Spherical

Color: White

Specific Surface Area: 25 - 35 m²/g

Trace metals analysis - Inductively Coupled Plasma Mass Spectrometry (ICP-MS)

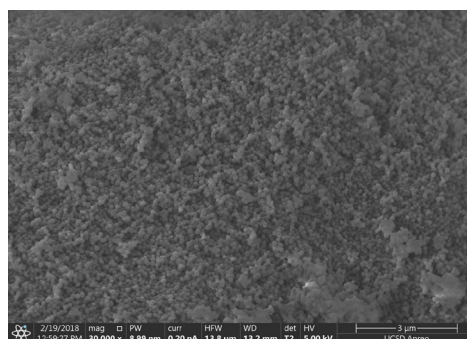
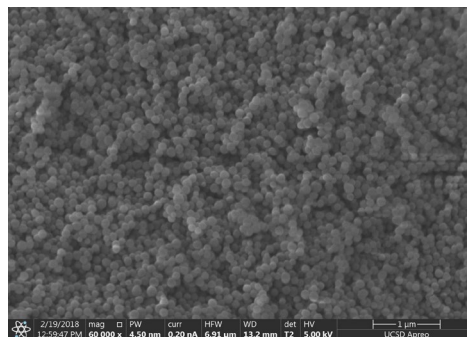
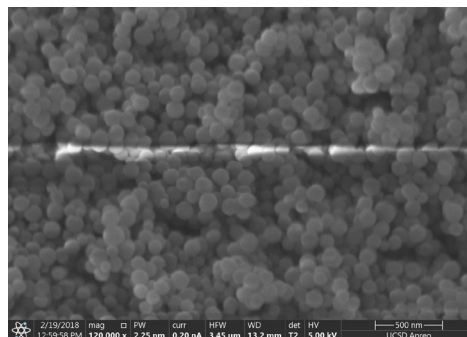
<5ppm of Aluminum, Calcium, Iron, Magnesium, Potassium, Sodium, Tin and Zinc

<0.5ppm of Chromium, Cobalt, Copper, Mercury, and Nickel.

<0.05ppm of Lead

Supplier:

General Engineering & Research, L.L.C.
10459 Roselle St. Ste. A
San Diego, CA 92121-1527
Phone: (858) 291-8336
www.geandr.com



SEM Images Lot# SIO2 NH2-1427