



GENERAL ENGINEERING AND RESEARCH

Certificate of Analysis

60nm Blue Silica Nanoparticles in H₂O

Product Detail:

Solids Concentration: 10wt%
Solution: De-ionized H₂O
Dye: Methylene Blue

Silica Nanoparticle Properties:

Mean Particle Diameter (SEM): 60nm+/-8nm
Coefficient of Variation: <20%
Morphology: Spherical
Color: Blue
Specific Surface Area: 40 - 60 m²/g

Trace metals analysis - Inductively Coupled Plasma Mass Spectrometry (ICP-MS)

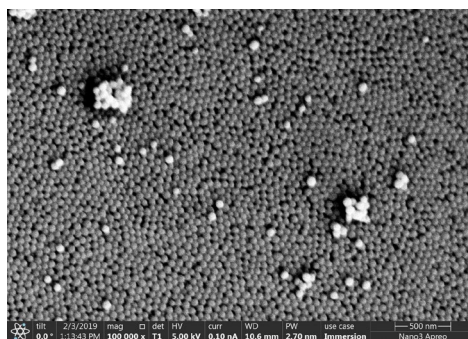
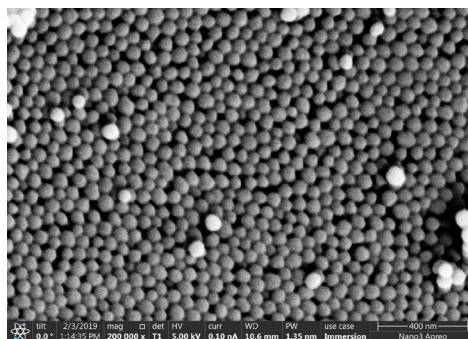
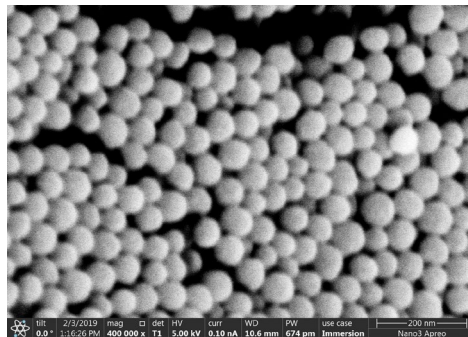
<5ppm of Aluminum, Calcium, Iron, Magnesium, Potassium, Sodium, Tin and Zinc

<0.5ppm of Chromium, Cobalt, Copper, Mercury, and Nickel.

<0.05ppm of Lead

Supplier:

General Engineering & Research, L.L.C.
10459 Roselle St. Ste. A
San Diego, CA 92121-1527
Phone: (858) 291-8336
www.geandr.com



SEM Images of Lot# SIO2MB-1528