



GENERAL ENGINEERING AND RESEARCH

Certificate of Analysis

80nm Silica Nanoparticle Powder

Product Detail:

Mean Particle Diameter (SEM): 80nm \pm 10nm

Coefficient of Variation: <20%

Morphology: Spherical

Color: White

Skeletal Density: 2.1 – 2.2 cm³/g

Specific Surface Area: 30 - 40 m²/g

Trace metals analysis - Inductively Coupled Plasma Mass Spectrometry (ICP-MS)

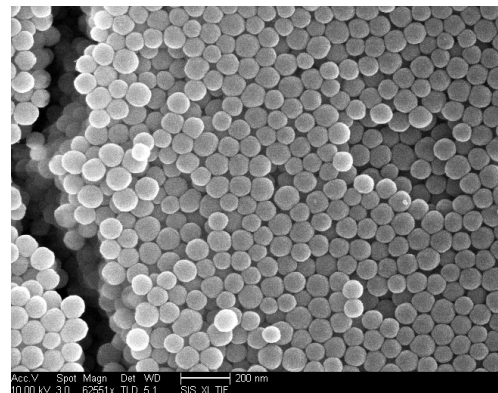
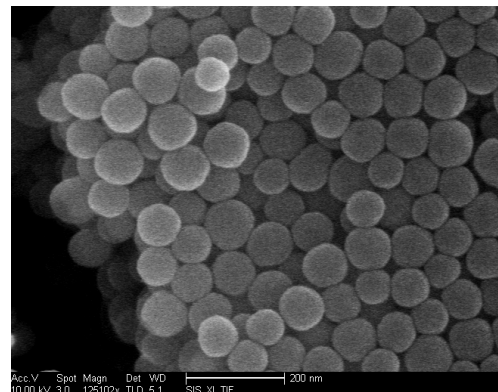
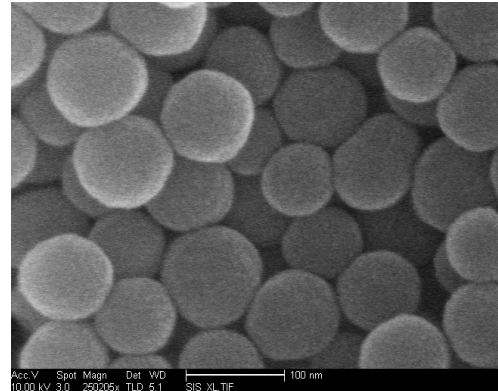
<5ppm of Aluminum, Calcium, Iron, Magnesium, Potassium, Sodium, Tin and Zinc

<0.5ppm of Chromium, Cobalt, Copper, Mercury, and Nickel.

<0.05ppm of Lead

Supplier:

General Engineering & Research, L.L.C.
10459 Roselle St. Ste. A
San Diego, CA 92121-1527
Phone: (858) 291-8336
www.geandr.com



SEM Images of Lot# SIO2-1097