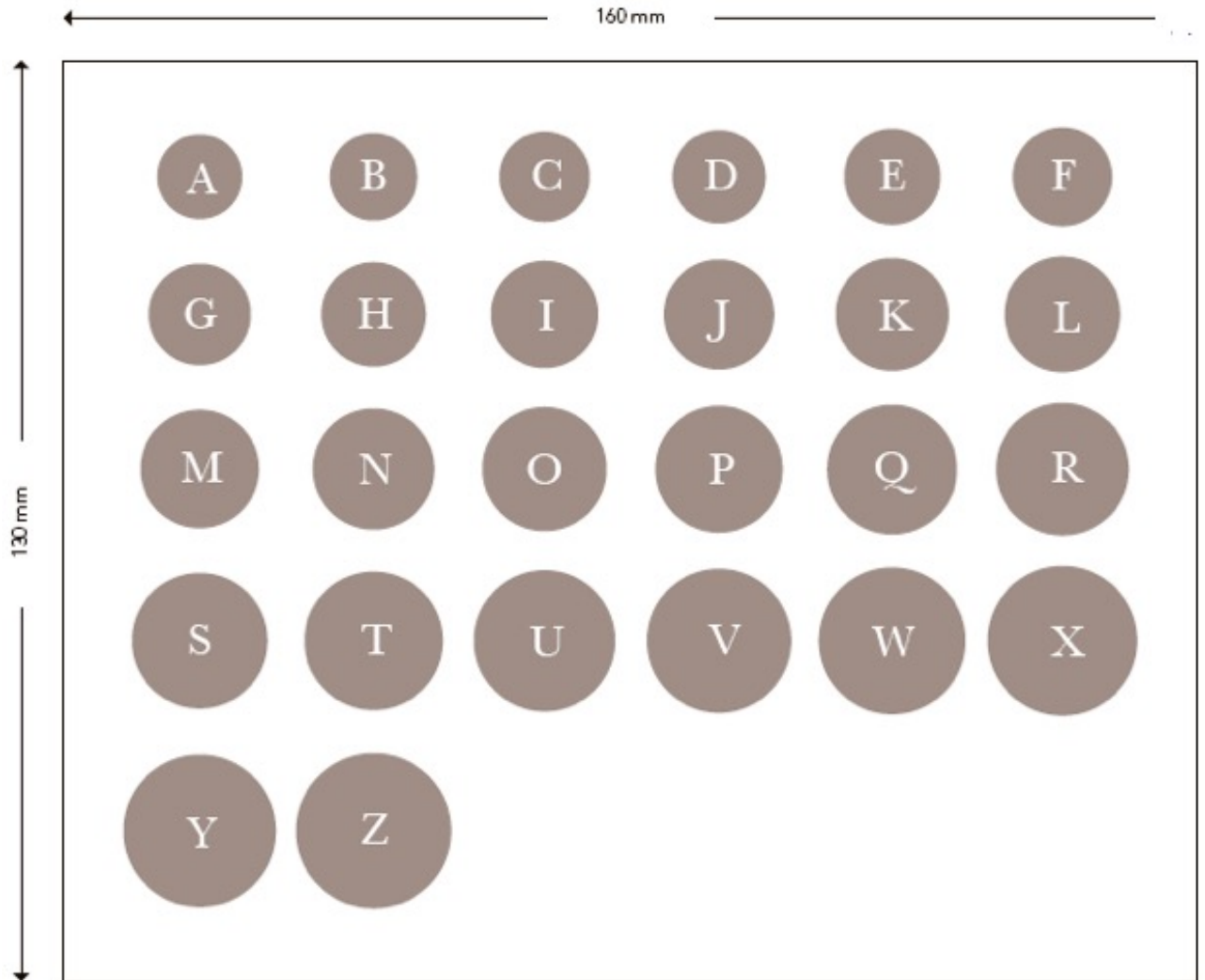


RING SIZER

SIGNET CIRCLE



Tiffany & Co. has a FREE iphone application that will allow you to measure your ring size.

"Tiffany & Co Engagement Ring

SIGNET CIRCLE RING SIZER

To ensure the best ring fit we recommend you use our ring sizer. Use this with a ring that either you or the person for whom you are purchasing a ring for currently wears.

Select a ring that is similar in style to the one you want to purchase and then follow the instructions. Please carefully read and follow these instructions:

1. Print this document at 100% size.
2. When setting print options you must ensure the options "to fit or shrink to page" ARE NOT selected in the print window of your computer screen.
3. Print the document and then measure the outer box with a ruler to ensure it matches the dimensions marked.

4. Hold your selected ring against the circles on the chart.
5. Choose the letter that best matches the internal diameter of the ring.
6. This will be the size of the ring.

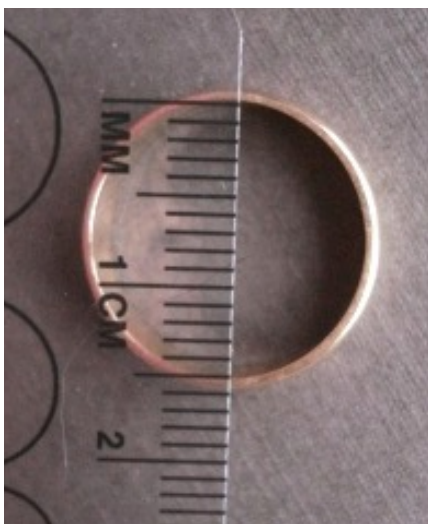
Contact Signet Circle for any assistance.

www.signetcircle.com.au

IF YOU ALREADY KNOW YOUR RING SIZE BY A DIFFERENT MEASUREMENT STANDARD PLEASE USE THE CONVERSION CHART.

At Signet Circle we measure the ring size of all our rings with an industry standard jewellers mandrel. The chart converts the actual ring size (mm) into some of the popular internationally recognized sizes. If you can not find a size in the chart that you are familiar with, please contact us.

Although all reasonable care is taken by Signet Circle to present true and accurate ring size conversions, some countries and regions have different interpretations of sizing. It always pays to check your true ring size at your local jewellery store before ordering rings to allow for these demographic variations in size interpretation.



| Size (mm) | Size (inches) | Diameter (mm) | Australia Size SIGNET CIRCLE | USA Size |
|-----------|---------------|---------------|---------------------------------|----------|
| 48 | 1 14/16 | 15.27 | I 1/2 | 4 1/2 |
| 49 | 1 15/16 | 15.7 | J 1/2 | 5 |
| 51 | 2 | 16.1 | L | 5 1/2 |
| 52 | 2 1/16 | 16.51 | M | 6 |
| 53 | 2 2/16 | 16.92 | N | 6 1/2 |
| 55 | 2 3/16 | 17.35 | O | 7 |
| 56 | 2 4/16 | 17.75 | P | 7 1/2 |
| 57 | 2 5/16 | 18.19 | Q | 8 |
| 58 | 2 6/16 | 18.53 | Q 1/2 | 8 1/2 |
| 59 | 2 7/17 | 18.89 | R 1/2 | 9 |
| 61 | 2 8/16 | 19.41 | S 1/2 | 9 1/2 |
| 62 | 2 9/16 | 19.84 | T 1/2 | 10 |
| 63 | 2 10/16 | 20.2 | U 1/2 | 10 1/2 |
| 65 | 2 11/16 | 20.68 | V 1/2 | 11 |
| 66 | 2 12/16 | 21.08 | W 1/2 | 11 1/2 |
| 68 | 2 13/16 | 21.49 | Y | 12 |
| 69 | 2 14/16 | 21.89 | Z | 12 1/2 |
| 70 | 2 15/16 | 22.33 | -- | 13 |

Signet Circle offers all sizes available to Men and Women including 1/2 sizes. Select the ring size to suit your chosen signet ring finger.