

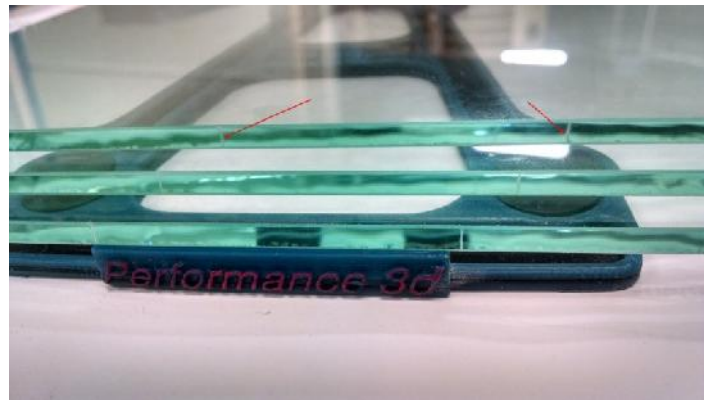
P3-d.com Performance 3-d

Performance3d1@gmail.com

www.p3-d.com

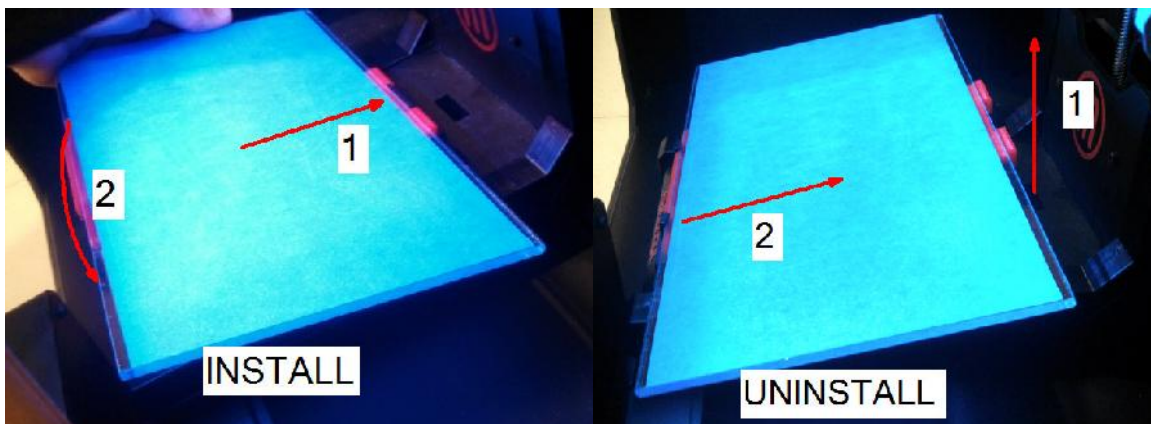
Thank you for your purchase of our A-Frame Glass Build Plate System! We hope this product serves you well. Your new system consists of an ultra-flat glass top plate and a custom engineered A-frame with (4) rubber pads pre-installed to keep the glass from sliding.

To install, center the glass in the frame using the two scribe marks on the edge of the glass:



Slide the assembly under the rear clip of the build platform. Then carefully snap the front clips over the glass. Ensure all clips are over **top of the glass**. Make sure to **re-level the build platform** and enjoy printing on a totally flat surface!

Note: the surface may need to be closer to the nozzle than the acrylic for the filament to stick.



If any part of your purchase should fail to meet your expectations, please message us directly through ebay or the email address below and we will do our best to resolve any issues immediately. Please check out our other 3D printer upgrades and accessories on our website.

-The Performance 3-d Team

Performance3d1@gmail.com

www.p3-d.com