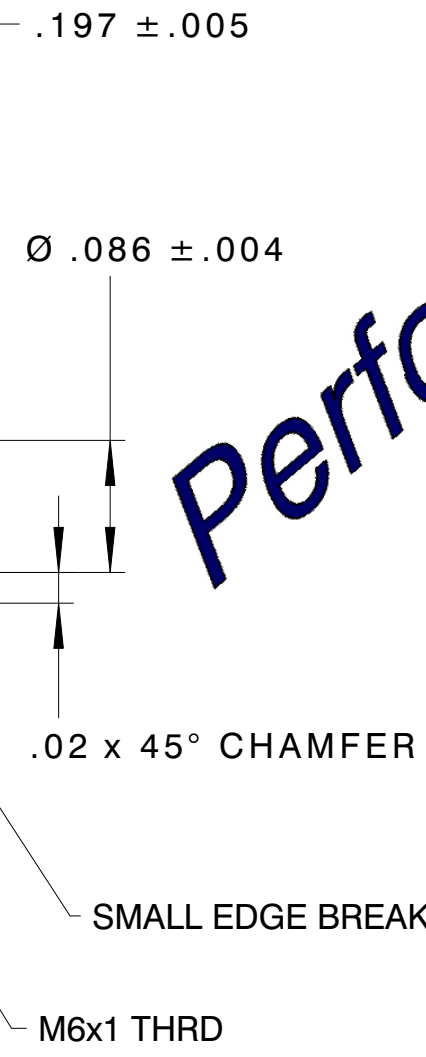
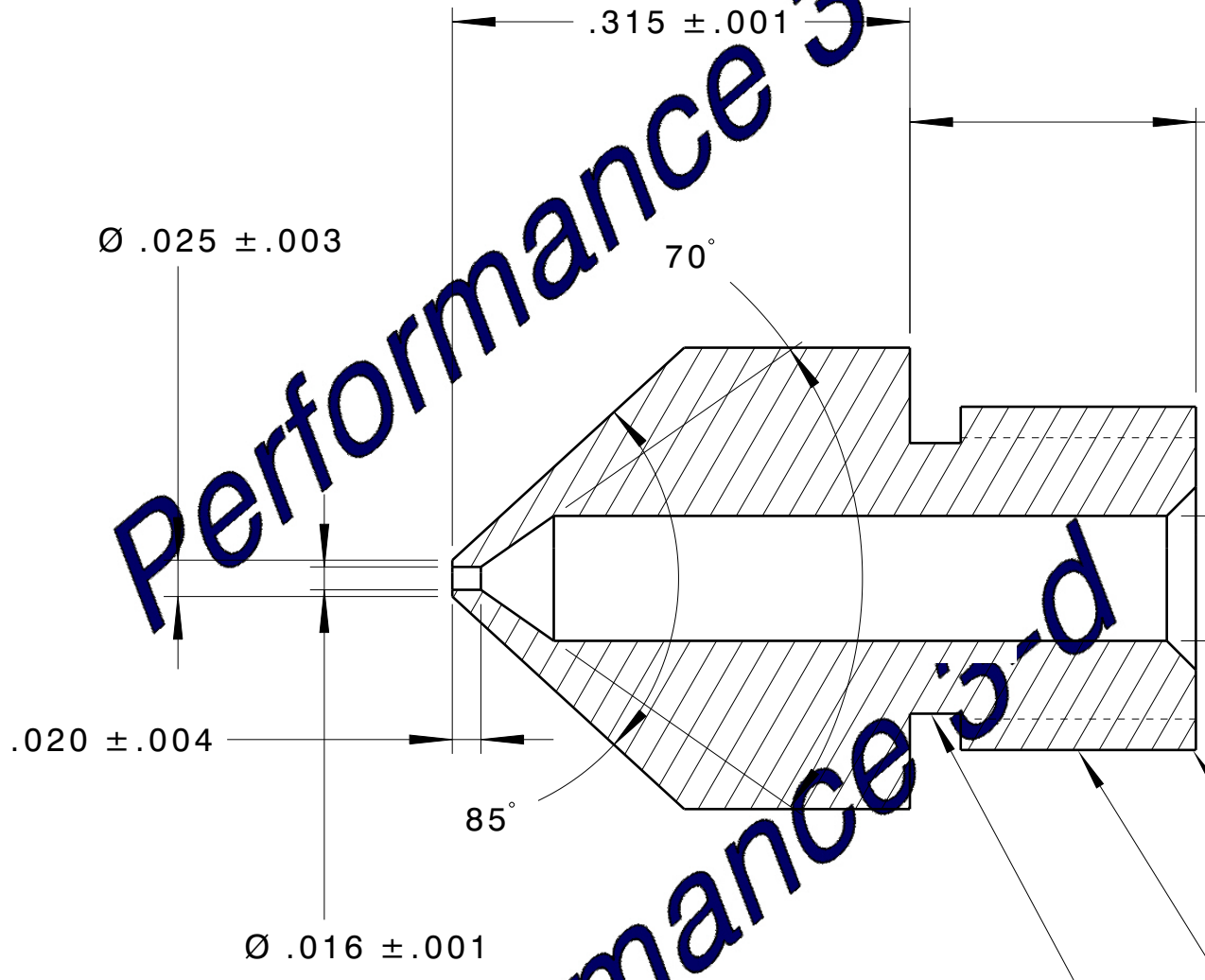
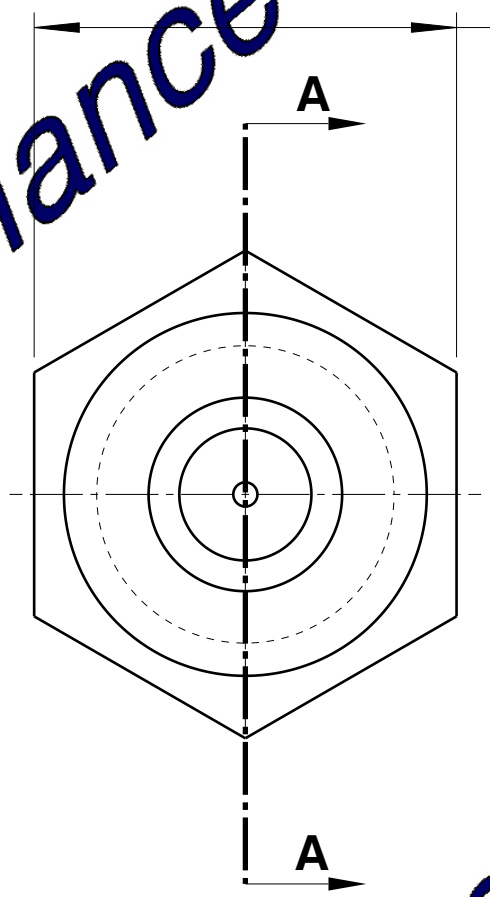


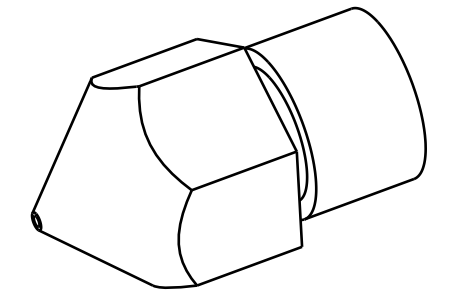
REVISION HISTORY				
ZONE	REV.	DESCRIPTION	DATE	APPROVED



INDUSTRY STANDARD UNDERCUT PERMISSIBLE
(.035 WIDE MAX x .025 DP MAX)



.275 ±.001
(7mm HEX)



ENGINEER	JRE	DATE	4-11-14
DRAFTER	JRE	DATE	4-11-14



MATERIAL	
360 BRASS	
TOLERANCES	
.X = ±.1	X° = ±1°
.XX = ±.015	(X) = (REFERENCE DIM)
.XXX = ±.005	
.XX = ±1/16	SURF. FIN = 125
UNLESS OTHERWISE INDICATED	
ALL DIMS IN INCHES (UNLESS SPECIFIED)	
DO NOT SCALE DRAWING	

DWG FILENAME	P3D-Nozzle.CATDrawing
3D MODEL FILENAME:	P3D-Nozzle.CATPart
ALL INFORMATION CONTAINED HEREIN IS PROPERTY OF PERFORMANCE 3-D AND MAY NOT BE DISSEMINATED OR SHARED WITHOUT WRITTEN CONSENT.	

DRAWING TITLE:		.4mm MK8 NOZZLE		REV	N/C
		P/N P3D-4N1			
SIZE	B	WEIGHT (lbs)	N/A	SCALE	8:1
				SHEET	1/1