

GET IT PAINTED

Non-Metallic Metals



TTCOMBAT

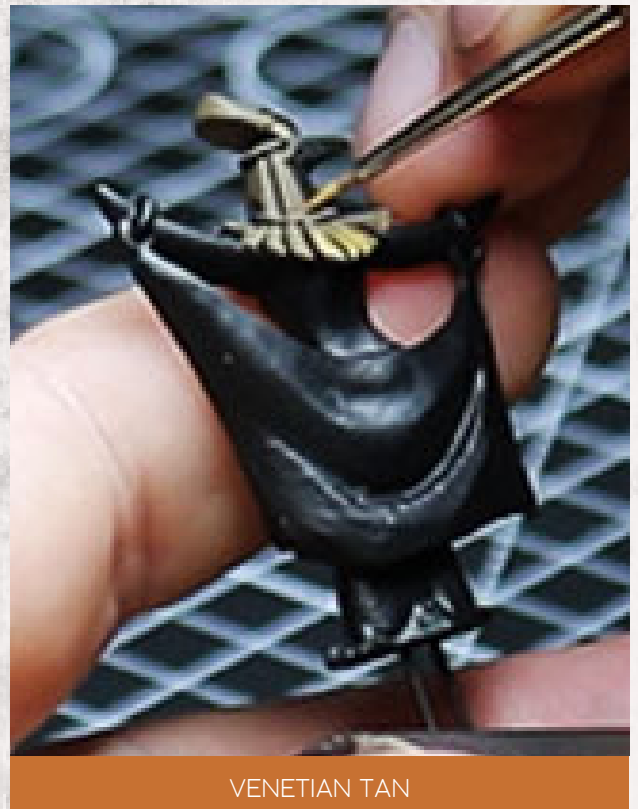
NON-METALLIC METAL

- Start by priming your model with a smooth coat of black primer.

Basecoat all the parts to be **Gold** with a **1:1** ratio of **Trench Mud** and **Venetian Tan**, use a little **Thinning Medium** to help make sure the paint flows and this first layer is smooth. This will help make sure subsequent coats of yellow go on smoothly and don't have to cover straight over the black primer.



- The first highlight of pure **Venetian Tan** should cover most of the base coat, only leaving the areas that are going to be the deepest shaded, once again make sure it's nice and smooth to help the next layers.



NON-METALLIC METAL

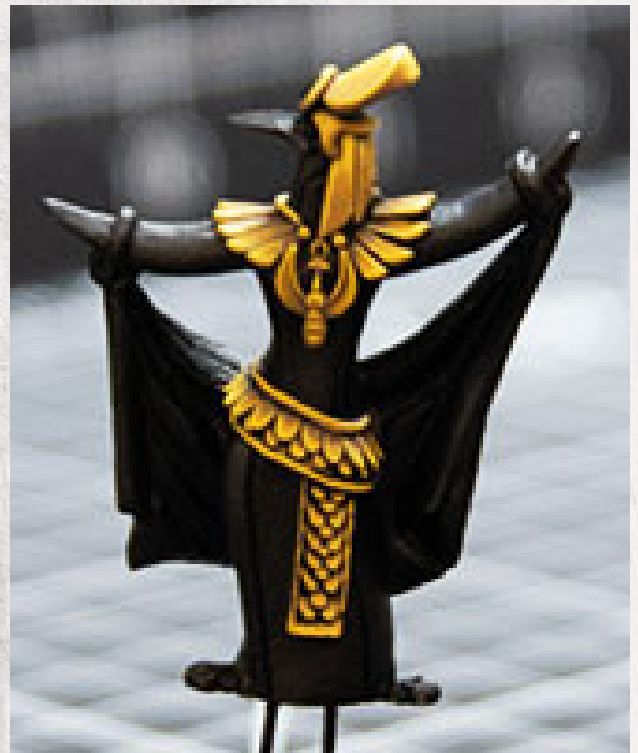
- Next add **Spotlight Yellow** to **Venetian Tan** with around a **2:1** ratio and use some **Thinning Medium** to create a glaze, this should be a very thin mix and will require control to make sure your brush isn't overloaded. When glazing, remove the excess paint from the brush and carefully apply the paint to the model in multiple thin layers going round the model and letting each coat dry before the next. This should brighten up the yellow.



SPOTLIGHT YELLOW

VENETIAN TAN

- For the first edge highlight mix **Khepri Sunshine Yellow** and **Spotlight Yellow** at a **2:1** ratio, apply this only along the edges that are to be lighter.



SPOTLIGHT YELLOW

KHEPRI SUNSHINE

NON-METALLIC METAL

- Using **Gold Wash** and **Thinning medium** at a **2:1** ratio glaze in the shadows. When doing this make sure your brush isn't overloaded and go over the parts you want to shade, this is a subtle process and is best to go round multiple times. Start by painting a thin layer over **2/3** of each plate then **1/2** of the plate then **1/3** of the plate working progressively towards the parts you want deepest shadows, this will build a smooth shade and bring depth to the gold.



HEATSINK BRONZE

- Now you continue the edge highlighting with a mix of **Khepri Sunshine Yellow** and **White** at a **1:2** ratio, you will need a steady hand and a sharp brush for this stage. I suggest you brace your elbows or forearms on your desk to help steady your hands and get a sharp highlight.

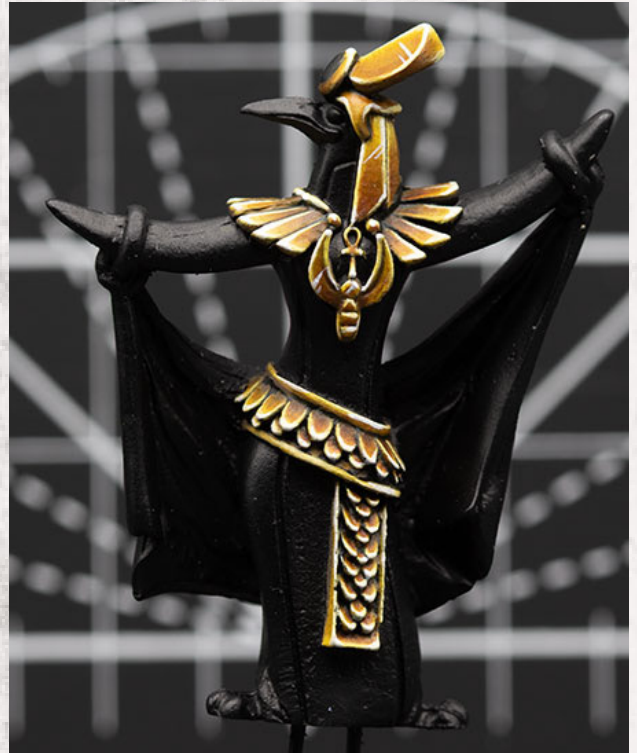


HEATSINK BRONZE

SUPERNOVA CHROME

NON-METALLIC METAL

- For the last stage use pure **white** to highlight the corners and some of the edges that would catch the light most, once again a sharp brush and steady hand are required and it's also good to put a few thin lines on to denote shiny surfaces but make sure not to overdo it.



WHITE