

LONDON

DREADNOUGHT

450 PTS



NAME	SCAN	SIG	THRUST	HULL	A	PD	G	T	SPECIAL
LONDON	14"	16"	6"	26	2+	18	1	S2	AEGIS (8), DREADNOUGHT

TYPE	LOCK	ATTACK	DAMAGE	ARC	SPECIAL
UF-9000 MASS DRIVER TURRET, STARBOARD	2+	2	1	F/S(R)	FUSILLADE-2
UF-9000 MASS DRIVER TURRET, PORT	2+	2	1	F/S(L)	FUSILLADE-2
UF-6400 MASS DRIVER TURRETS, DORSAL BATTERY	3+	8	1	F/S	-
UF-6400 MASS DRIVER TURRETS, VENTRAL BATTERY	3+	8	1	F/S	-
UF-4200 MASS DRIVER TURRETS, CORE BATTERY	4+	12	1	F/S	-
UF-4200 MASS DRIVER TURRETS, STARBOARD BATTERY	4+	4	1	F/S(R)	-
UF-4200 MASS DRIVER TURRETS, PORT BATTERY	4+	4	1	F/S(L)	-
LEVIATHAN MISSILE BAYS	3+	11	1	F/S/R	CLOSE ACTION

COMMAND SHIP

If you mount your Admiral in this ship, its cost is reduced to 0 pts and becomes AV5.

Famous ships of the class: *London, Robert A Bernard, Destiny, Sceptered Empress, Triumph*

Triple the displacement of a Battleship, the London is one of the most powerful war-ships ever produced by mankind, armed with fifty mass drivers in various gauges. One may annihilate an entire fleet, unassisted.

It takes an entire orbital yard sector three years to lay down the hull of one of these ships. The sheer resources to outfit crew and maintain the ship reserves its use for the direst circumstances, commanded by the UCMF's most decorated Admirals. Each is a legend in its own right.

UCM LONDON DREADNOUGHT
LENGTH: 1751M
BEAM: 575M
HEIGHT: 674M
DISPLACEMENT: 69,631,000M ³

WASHINGTON

SUPERCARRIER

440 PTS



NAME	SCAN	SIG	THRUST	HULL	A	PD	G	T	SPECIAL
WASHINGTON	14"	16"	6"	26	2+	18	1	S2	DREADNOUGHT, LAUNCH

TYPE	LOCK	ATTACK	DAMAGE	ARC	SPECIAL
UF-9000 MASS DRIVER TURRET, STARBOARD	2+	2	1	F/S(R)	FUSILLADE-2
UF-9000 MASS DRIVER TURRET, PORT	2+	2	1	F/S(L)	FUSILLADE-2
UF-4200 MASS DRIVER TURRETS, CORE BATTERY	4+	12	1	F/S	-
UF-4200 MASS DRIVER TURRETS, STARBOARD BATTERY	4+	4	1	F/S(R)	-
UF-4200 MASS DRIVER TURRETS, PORT BATTERY	4+	4	1	F/S(L)	-
LEVIATHAN MISSILE BAYS	3+	11	1	F/S/R	CLOSE ACTION

LOAD	LAUNCH	SPECIAL
FIGHTERS & BOMBERS	15	-

COMMAND SHIP

If you mount your Admiral in this ship, its cost is reduced to 0 pts and becomes AV5.

Famous ships of the class: *Washington, Eisenhower, Nimitz, Our Will, Shield of Aurum*

The Washington is the largest military starship in UCMF. Examples include the Shield of Aurum, the UCMF's flagship and Our Will, the most decorated Colonial vessel.

Its mass drivers match any battleship, but its strength lies in its launch complement, more than an entire strike group—pivotal, if deployed skilfully. Just one of these monstrosities can throw up an impenetrable fighter screen or a wave of bombers dense enough to cripple a battleship in one blow.

UCM WASHINGTON SUPERCARRIER
LENGTH: 1751M
BEAM: 575M
HEIGHT: 674M
DISPLACEMENT: 73,643,000M ³

BEIJING

BATTLESHIP

230 PTS



NAME	SCAN	SIG	THRUST	HULL	A	PD	G	T	SPECIAL
BEIJING	8"	10"	6"	20	3+	10	1	S	-

TYPE	LOCK	ATTACK	DAMAGE	ARC	SPECIAL
PYTHON SUPER-HEAVY LASER	3+	3	2	F(N)	BLOOM, BURNTHROUGH (10), FLASH
UF-4200 MASS DRIVER TURRETS	4+	4	1	F/S(L)	FUSILLADE-2, LINKED-1
UF-4200 MASS DRIVER TURRETS	4+	4	1	F/S(R)	FUSILLADE-2, LINKED-1
UF-6400 MASS DRIVER TURRETS	3+	6	1	F/S	LINKED-1
SWORDFISH MISSILE BAYS	3+	8	1	F/S/R	CLOSE ACTION

Famous ships of the class: *Missouri, Liberator, Victory, Vox Bellum, Alea Iacta Est*

The mighty Beijing class battleship is the oldest class of combat starship in general service with the Colonial Fleet. UCMS Beijing was laid down in 2579 and completed in 2586, making her 85 years old at the time of her destruction in the first battle of Olympus. However, that first example was followed by dozens more of her class and construction still continues to the present day. The design has proven so reliable and versatile that the basic hull forms the base of most of the UCM's enormous battleships.

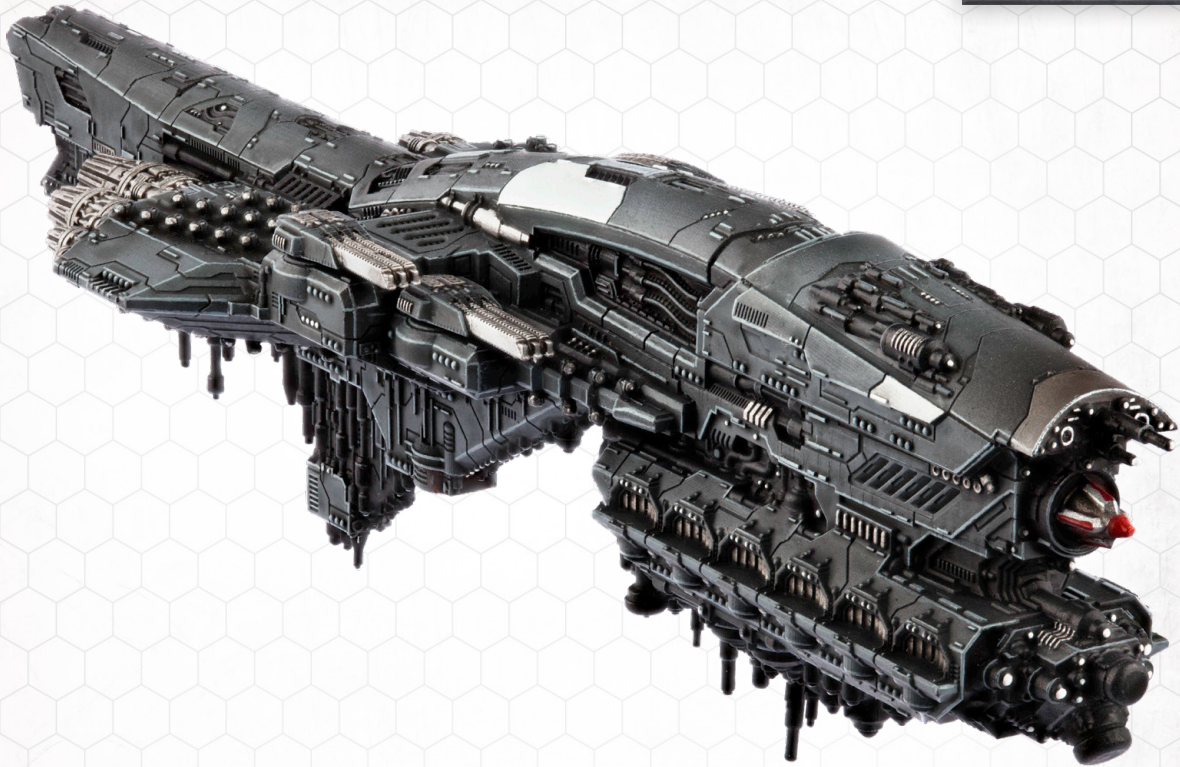
The Beijing class is an extremely resilient vessel which packs extensive firepower, namely six UF-6400 mass drivers in three turrets, twelve UF-4200 mass drivers in four turrets and one Cobra laser, not to mention scores of missile bays and banks of point defence lasers. It is currently one of the most popular commands of the UCMF's Admirals and for good reason – few ships the UCM has to offer are as effective in the annihilation of any enemy as the formidable Beijing. Most of the UCMF's battleships are surrounded by tales of their illustrious deeds, their names etched into the collective consciousness of the colonial citizenry and this class has no shortage of legends.

UCM BEIJING BATTLESHIP
LENGTH: 1293M
BEAM: 421M
HEIGHT: 383M
DISPLACEMENT: 21,289,000M ³

NEW YORK

BATTLESHIP

250 PTS



NAME	SCAN	SIG	THRUST	HULL	A	PD	G	T	SPECIAL
NEW YORK	8"	10"	6"	20	3+	10	1	S	-

TYPE	LOCK	ATTACK	DAMAGE	ARC	SPECIAL
UF-4200 MASS DRIVER TURRETS	4+	4	1	F/S(L)	LINKED-1 FUSILLADE-2
UF-4200 MASS DRIVER TURRETS	4+	4	1	F/S(R)	LINKED-1 FUSILLADE-2
SHARK MISSILE BAYS	3+	5	1	F/S/R	CLOSE ACTION

LOAD	LAUNCH	SPECIAL
FIGHTERS & BOMBERS	7	-
TORPEDO	1	L(2)

Famous ships of the class: *Admiral Togo, Carpe Noctum, Liberty Queen, Lord Nelson, General Sherman*

The New York class is one of the most in-demand ships in the UCMF since its flexibility and awesome power are almost unparalleled. A later development of the Beijing class, it replaces the former's heavy turrets with a gigantic voidcraft hangar for launching scores of lethal fighters and bombers. It also replaces the Cobra laser with an enormous torpedo tube and internal storage for two of these devastating munitions. As such, it can take advantage of the lower power requirements of its launch assets to bring more offensive capability to bear when conducting complex manoeuvres, all while producing less conspicuous energy spikes.

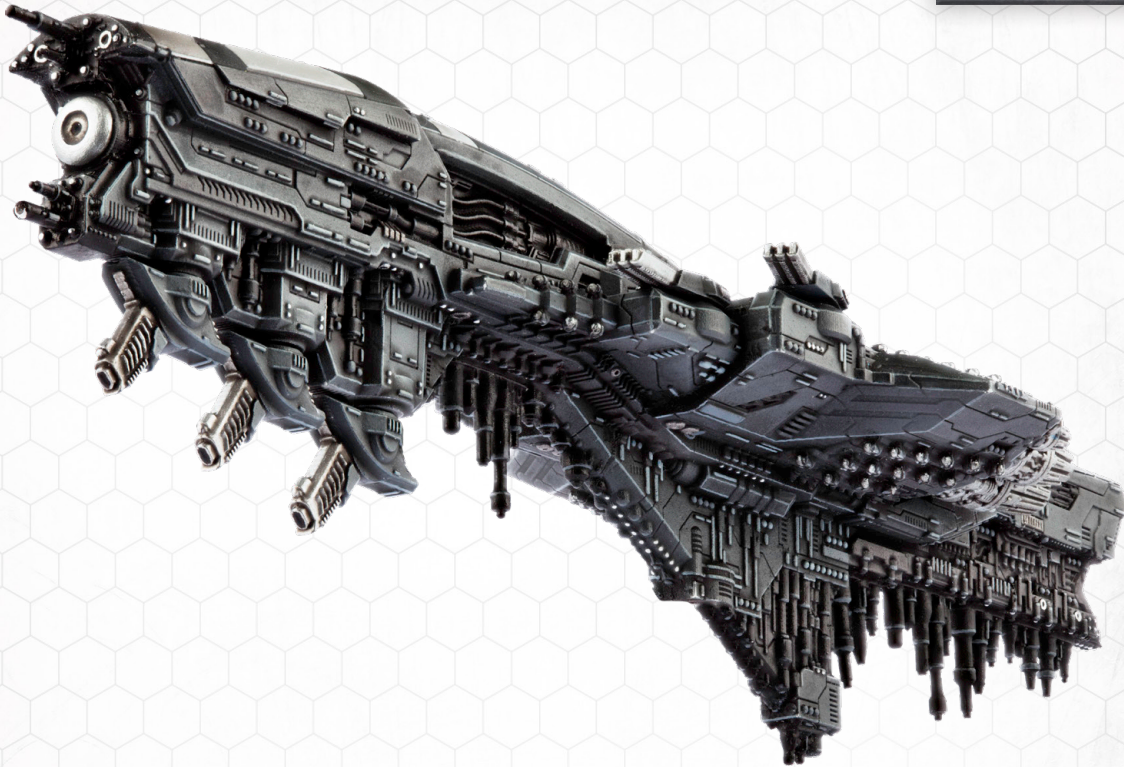
While less common than the Beijing (as far as any battleship can be described as 'common'), a total of 19 are currently on the register – a respectable number but sorely below current demand, which cannot be met quickly due to the complexity of construction. A shortage of trained pilots compounds the issue, exacerbated by the terrible losses sustained by the Fleet Air Arm above Olympus.

UCM NEW YORK BATTLESHIP
LENGTH: 1293M
BEAM: 421M
HEIGHT: 383M
DISPLACEMENT: 25,253,000M ³

TOKYO

BATTLESHIP

220 PTS



NAME	SCAN	SIG	THRUST	HULL	A	PD	G	T	SPECIAL
TOKYO	8"	10"	6"	20	3+	10	1	S	-

TYPE	LOCK	ATTACK	DAMAGE	ARC	SPECIAL
PYTHON SUPER-HEAVY LASER	3+	3	2	F(N)	BLOOM, BURNTHROUGH (10), FLASH
UF-4200 MASS DRIVER TURRETS	4+	4	1	F/S(L)	FUSILLADE-2, LINKED-1
UF-4200 MASS DRIVER TURRETS	4+	4	1	F/S(R)	FUSILLADE-2, LINKED-1
UF-B-8000 BOMBARDMENT TURRETS	2+	5	1	F/S/R	BOMBARDMENT, LINKED-1
UF-B-8000 BOMBARDMENT TURRETS	2+	5	1	F/S/R	BOMBARDMENT, LINKED-1
SWORDFISH MISSILE BAYS	3+	8	1	F/S/R	CLOSE ACTION

Famous ships of the class: *Spirit of Vengeance, Yamato, Musashi, Forgehammer*

The colossal Tokyo class battleship is one of the most specialised ships of this tonnage level in the UCMF. While based on the Beijing design, this class dispenses with its main mass driver battery in favour of three turreted UF/B-8000 bombard cannons, making this one of the most formidable orbital bombardment platforms anywhere in the Reconquest. Only the UCM has need of a battleship sized vessel designed for this purpose, such is the scale of the mighty undertaking.

In combat, the Tokyo surpasses the Madrid in this role when heavy return fire is expected. Conducting a surface bombardment is always risky and requires a stable platform to hold station above the target which will always be vulnerable to enemy reprisals. Fortunately, the Tokyo has extreme resilience to damage, allowing it to decimate the target while defending itself with other potent weapons, ensuring that the job is done regardless of available support or enemy presence.

UCM TOKYO BATTLESHIP

LENGTH: 1293M

BEAM: 421M

HEIGHT: 383M

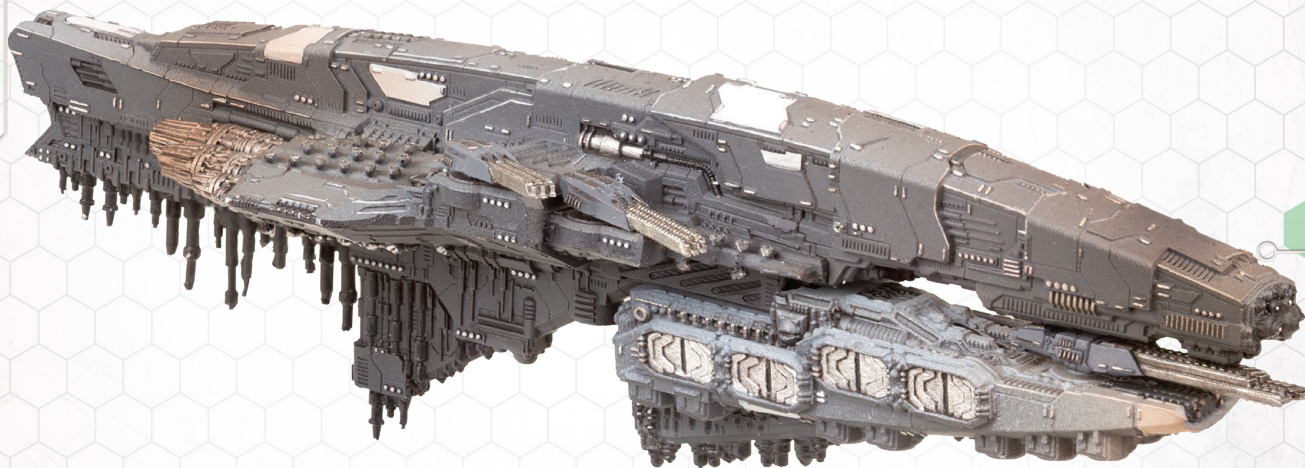
DISPLACEMENT:

21,362,000M³

DELHI

BATTLESHIP

245PTS



NAME	SCAN	SIG	THRUST	HULL	A	PD	G	T	SPECIAL
DELHI	8"	10"	6"	20	3+	10	1	S	-

TYPE	LOCK	ATTACK	DAMAGE	ARC	SPECIAL
UF-4200 MASS DRIVER TURRETS	4+	4	1	F/S(L)	FUSILLADE-2, LINKED-1
UF-4200 MASS DRIVER TURRETS	4+	4	1	F/S(R)	FUSILLADE-2, LINKED-1
UF-6400 MASS DRIVER TURRETS	3+	4	1	F/S	-
SHARK MISSILE BAYS	3+	5	1	F/S/R	CLOSE ACTION

LOAD	LAUNCH	SPECIAL
BULK LANDERS	4	-

Famous ships of the class: *General Raj-Singh, Tiger's Lair, Gauntlet of Ferrum, Deus Exercitus*

The UCMF's battleships were among its oldest vessels, with some nearing 90 years' service. Although stalwarts like the Beijing continue to be built, the Admiralty wanted new capabilities, modernity, and lethality. Launched in 2673, UCMS Hanoi was the first of this new breed of monsters to lumber from Niccolum's yards. The embodiment of focused colonial naval architecture, the Hanoi is built around twin UF-12000 mass drivers, making it a supreme capital ship killer. These, the largest accelerator weapons yet mounted to a UCMF vessel, demanded major revisions to the legacy superstructure and power cores.

The latest compact systems create greatly enlarged, internal spaces. On the Hanoi, they're filled with gen-capacitors, but on the Delhi, they're packed with landing forces. The Army's grievances about toopship's vulnerability and terrible losses have been answered with a battleship-sized delivery system with the firepower to engage any threat unsupported.

UCM DELHI BATTLESHIP

LENGTH: 1,314M

BEAM: 421M

HEIGHT: 384M

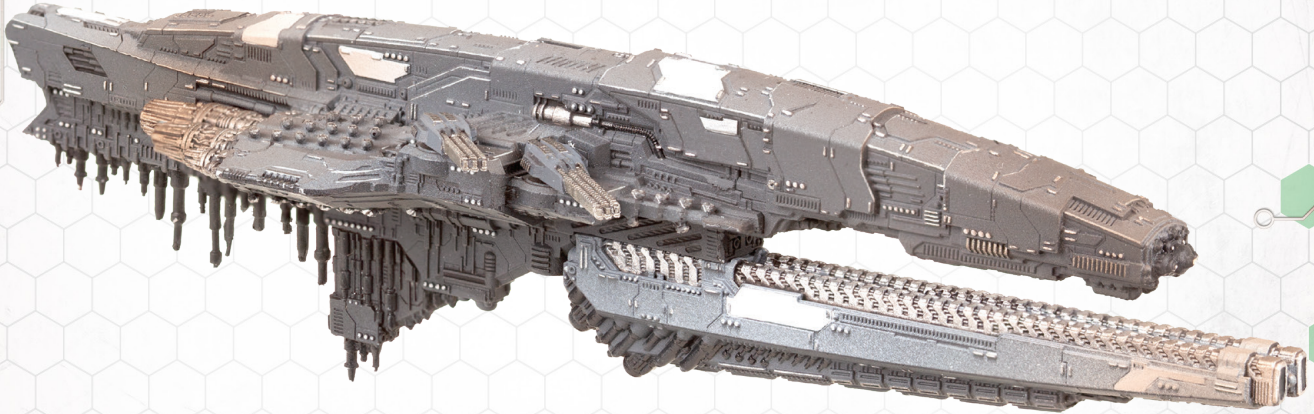
DISPLACEMENT:

27,858,000M³

HANOI

BATTLESHIP

250 PTS



NAME	SCAN	SIG	THRUST	HULL	A	PD	G	T	SPECIAL
HANOI	8"	10"	6"	20	3+	10	1	S	-

TYPE	LOCK	ATTACK	DAMAGE	ARC	SPECIAL
UF-12000 TWIN MASS DRIVER	2+	2	4	F(N)	CRIPPLING
UF-4200 MASS DRIVER TURRETS	4+	4	1	F/S(L)	FUSILLADE-2, LINKED-1
UF-4200 MASS DRIVER TURRETS	4+	4	1	F/S(R)	FUSILLADE-2, LINKED-1
SWORDFISH MISSILE BAYS	3+	8	1	F/S/R	CLOSE ACTION

Famous ships of the class: *Hanoi, Admiral Chang, Spear of Aurum, Foe Hammer*

The UCMF's battleships were among its oldest vessels, with some nearing 90 years' service. Although stalwarts like the Beijing continue to be built, the Admiralty wanted new capabilities, modernity, and lethality. Launched in 2673, UCMS Hanoi was the first of this new breed of monsters to lumber from Niccolum's yards. The embodiment of focused colonial naval architecture, the Hanoi is built around twin UF-12000 mass drivers, making it a supreme capital ship killer. These, the largest accelerator weapons yet mounted to a UCMF vessel, demanded major revisions to the legacy superstructure and power cores.

The latest compact systems create greatly enlarged, internal spaces. On the Hanoi, they're filled with gen-capacitors, but on the Delhi, they're packed with landing forces. The Army's grievances about toopship's vulnerability and terrible losses have been answered with a battleship-sized delivery system with the firepower to engage any threat unsupported.

UCM HANOI BATTLESHIP
LENGTH: 1,413M
BEAM: 421M
HEIGHT: 384M
DISPLACEMENT: 26,289,000M ³

JOHANNESBURG

BATTLECRUISER

195 PTS



NAME	SCAN	SIG	THRUST	HULL	A	PD	G	T	SPECIAL
JOHANNESBURG	6"	6"	8"	14	3+	7	1	H	LAUNCH

TYPE	LOCK	ATTACK	DAMAGE	ARC	SPECIAL
UF-4200 MASS DRIVER TURRET	4+	2	1	F/S(L)	LINKED-1
UF-4200 MASS DRIVER TURRET	4+	2	1	F/S(R)	LINKED-1
UF-6400 MASS DRIVER TURRET	3+	4	1	F/S	LINKED-1
UF-6400 MASS DRIVER TURRET	3+	4	1	F/S	-
SHARK MISSILE BAYS	4+	5	1	F/S/R	CLOSE ACTION

LOAD	LAUNCH	SPECIAL
FIGHTERS & BOMBERS	3	-

Famous ships of the class: *Atlantis* (Atlantis class), *Admiral Halsey*, *Warspite*, *Huntsman*, *True Justice* (Johannesburg class)

The UCMS *Atlantis* was the first modern battlecruiser constructed by the UCM and was a testbed for development, sharing some common parts with cruisers. She was designed for battleship-level firepower and cruiser-level speed at the expense of survivability. The primary mission of *Atlantis* would be to hunt down lesser ships and destroy them quickly in flanking and interdiction operations. She excelled at this during the Wolfrum Penal Insurrection and limited engagements with the Shaltari before 2659, proving the concept.

Following this success, the Johannesburg class was designed around an entirely new hull created for the specific requirements of battlecruisers. This class is far cheaper to produce and easier to maintain being purpose built, although its combat effectiveness is equivalent. With this development, *Atlantis* remains the only ship of her class and is still in active service, while the Johannesburgs are quickly eclipsing her in numbers as the Reconquest grinds on.

UCM JOHANNESBURG BATTLECRUISER
LENGTH: 1160M
BEAM: 236M
HEIGHT: 368M
DISPLACEMENT: 9,609,000M ³

ATLANTIS

BATTLECRUISER

195 PTS



NAME	SCAN	SIG	THRUST	HULL	A	PD	G	T	SPECIAL
ATLANTIS	6"	6"	8"	14	3+	7	1	H	LAUNCH

TYPE	LOCK	ATTACK	DAMAGE	ARC	SPECIAL
UF-4200 MASS DRIVER TURRET	4+	2	1	F/S(L)	LINKED-1
UF-4200 MASS DRIVER TURRET	4+	2	1	F/S(R)	LINKED-1
UF-6400 MASS DRIVER TURRET	3+	4	1	F/S	LINKED-1
UF-6400 MASS DRIVER TURRET	3+	4	1	F/S	-
SHARK MISSILE BAYS	4+	5	1	F/S/R	CLOSE ACTION

LOAD	LAUNCH	SPECIAL
FIGHTERS & BOMBERS	3	-

COUNTS AS

This ship counts as a Johannesburg Battlecruiser.

Famous ships of the class: *Atlantis* (Atlantis class), *Admiral Halsey*, *Warspite*, *Huntsman*, *True Justice* (Johannesburg class)

The UCMS Atlantis was the first modern battlecruiser constructed by the UCM and was a testbed for development, sharing some common parts with cruisers. She was designed for battleship-level firepower and cruiser-level speed at the expense of survivability. The primary mission of Atlantis would be to hunt down lesser ships and destroy them quickly in flanking and interdiction operations. She excelled at this during the Wolfrum Penal Insurrection and limited engagements with the Shaltari before 2659, proving the concept.

Following this success, the Johannesburg class was designed around an entirely new hull created for the specific requirements of battlecruisers. This class is far cheaper to produce and easier to maintain being purpose built, although its combat effectiveness is equivalent. With this development, Atlantis remains the only ship of her class and is still in active service, while the Johannesburgs are quickly eclipsing her in numbers as the Reconquest grinds on.

UCM ATLANTIS BATTLECRUISER

LENGTH: 1160M

BEAM: 301M

HEIGHT: 315M

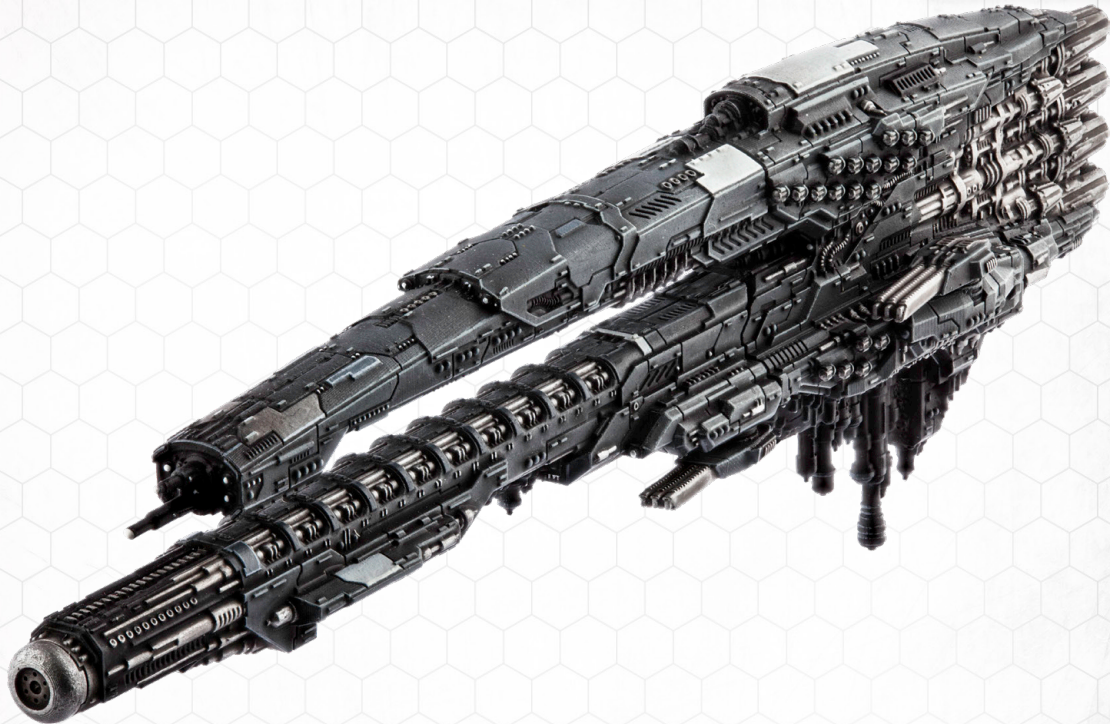
DISPLACEMENT:

9,609,000M³

PERTH

BATTLECRUISER

195 PTS



NAME	SCAN	SIG	THRUST	HULL	A	PD	G	T	SPECIAL
PERTH	6"	6"	8"	14	3+	7	1	H	-

TYPE	LOCK	ATTACK	DAMAGE	ARC	SPECIAL
VIPER SUPER-HEAVY LASER	3+	4	1	F(N)	BURNTHROUGH (10), FLASH
UF-4200 MASS DRIVER TURRET	4+	4	1	F/S(L)	LINKED-1
UF-4200 MASS DRIVER TURRET	4+	4	1	F/S(R)	LINKED-1
SHARK MISSILE BAYS	4+	5	1	F/S/R	CLOSE ACTION

Famous ships of the class: *Avalon* (Avalon class), *Vindicator*, *Enchantress*, *Liberty's Edge*, *Helena Bellaque* (Perth class)

The UCMS *Avalon* was constructed as part of the battlecruiser testbed program as the UCMS *Atlantis*' sister ship. Launched 10 years into the program in 2649, she differed from her sister by replacing the primary mass driver turret battery with an enormous Viper super-heavy anti-ship laser, still one of the largest weapons ever to be mounted to a UCM ship. This colossal armament took up almost half the ship's length and was also a testbed in itself and the first of its kind.

Capable of neatly slicing a cruiser in two, this weapon proved devastating if highly conspicuous when fired, necessitating careful use by a skilled captain. At the conclusion of the battlecruiser testbed program, the Perth class was designed around an entirely new hull created for the specific requirements of battlecruisers. Much as with the *Johannesburg*, this class is more efficient in mass production and incorporates a range of improvements from a logistical perspective although is broadly equivalent in combat to its forbearer. As fleet engagements in the Reconquest shift from initial battle to hunter-killer operations, the value of battlecruisers will no doubt increase for the Admiralty and more cannot be built fast enough to satisfy demand.

UCM ROME BATTLECRUISER
LENGTH: 1131M
BEAM: 236M
HEIGHT: 368M
DISPLACEMENT: 15,319,000M³

AVALON

BATTLECRUISER

195 PTS



NAME	SCAN	SIG	THRUST	HULL	A	PD	G	T	SPECIAL
AVALON	6"	6"	8"	14	3+	7	1	H	-

TYPE	LOCK	ATTACK	DAMAGE	ARC	SPECIAL
VIPER SUPER-HEAVY LASER	3+	4	1	F(N)	BURNTHROUGH (10), FLASH
UF-4200 MASS DRIVER TURRET	4+	4	1	F/S(L)	LINKED-1
UF-4200 MASS DRIVER TURRET	4+	4	1	F/S(R)	LINKED-1
SHARK MISSILE BAYS	4+	5	1	F/S/R	CLOSE ACTION

COUNTS AS

This ship counts as a Perth Battlecruiser.

Famous ships of the class: *Avalon* (Avalon class), *Vindicator*, *Enchantress*, *Liberty's Edge*, *Helena Bellaque* (Perth class)

The UCMS Avalon was constructed as part of the battlecruiser testbed program as the UCMS Atlantis' sister ship. Launched 10 years into the program in 2649, she differed from her sister by replacing the primary mass driver turret battery with an enormous Viper super-heavy anti-ship laser, still one of the largest weapons ever to be mounted to a UCM ship. This colossal armament took up almost half the ship's length and was also a testbed in itself and the first of its kind.

Capable of neatly slicing a cruiser in two, this weapon proved devastating if highly conspicuous when fired, necessitating careful use by a skilled captain. At the conclusion of the battlecruiser testbed program, the Perth class was designed around an entirely new hull created for the specific requirements of battlecruisers. Much as with the Johannesburg, this class is more efficient in mass production and incorporates a range of improvements from a logistical perspective although is broadly equivalent in combat to its forbearer. As fleet engagements in the Reconquest shift from initial battle to hunter-killer operations, the value of battlecruisers will no doubt increase for the Admiralty and more cannot be built fast enough to satisfy demand.

UCM AVALON BATTLECRUISER
LENGTH: 1131M
BEAM: 236M
HEIGHT: 368M
DISPLACEMENT: 15,319,000M ³

ROME

BATTLECRUISER

170 PTS



NAME	SCAN	SIG	THRUST	HULL	A	PD	G	T	SPECIAL
ROME	6"	6"	8"	14	3+	15	1	H	AEGIS (9), LAUNCH

TYPE	LOCK	ATTACK	DAMAGE	ARC	SPECIAL
UF-4200 MASS DRIVER	4+	2	1	F/S(L)	LINKED-1
UF-4200 MASS DRIVER	4+	2	1	F/S(L)	LINKED-1
SHARK MISSILE BAYS	4+	5	1	F/S/R	CLOSE ACTION

LOAD	LAUNCH	SPECIAL
HEAVY TORPEDO	1	LIMITED (1)
HEAVY TORPEDO	1	LIMITED (1)

TYPE	THRUST	LOCK	ATTACK	DAMAGE	SPECIAL
UCM HEAVY TORPEDO	9"	2+	4	4	-

Famous ships of the class: *Charlemagne*, *Eden Victory*, *Typhoon*, *Hammer of Elysium*

After several well publicised heroic kills made by old Havana torpedo destroyers during the Reconquest, pressure built within the Admiralty for a new ship which offered the specialist benefits of a fast ship designed around torpedoes. Since enough Havanas survived to fill their own niche, naval architects opted for a battlecruiser hull, permitting heavy torpedoes and double tubes.

The Rome is an aggressive, focused ship killer. To support its charge and to allow it to operate closer to the enemy than most battlecruisers could withstand the Rome mounts 46 additional Aegis-V point defence lasers, which can also lend their protection to allied ships - a secondary role once its torpedoes are expended.

On the day it entered service in the second month of the battle for Earth, two rushed to engage the Scourge Dreadnought Nightqueen, which had slipped in on silent running to threaten Admiral Halsey's flagship. Both the brand new UCMS Charlemagne and UCMS Eden Victory were destroyed, but minutes later all their torpedoes hit home, breaking the Nightqueen in two.

UCM ROME BATTLECRUISER
LENGTH: 1131M
BEAM: 236M
HEIGHT: 368M
DISPLACEMENT: 15,319,000M ³

VENICE

COMMAND BATTLECRUISER

200 PTS



NAME	SCAN	SIG	THRUST	HULL	A	PD	G	T	SPECIAL
VENICE	6"	6"	8"	14	3+	7	1	H	-

TYPE	LOCK	ATTACK	DAMAGE	ARC	SPECIAL
UF-4200 MASS DRIVER	4+	2	1	F/S(L)	LINKED-1
UF-4200 MASS DRIVER	4+	2	1	F/S(L)	LINKED-1
SHARK MISSILE BAYS	4+	5	1	F/S/R	CLOSE ACTION

COMMAND DECK

If you mount your Admiral in this ship, when drawing Command Cards, you may draw 2 more than normal.

UCM BATTLENET

As long as this ship is on the board, when a friendly Battlegroup on the board activates (including this one), you may choose to discard 1 Command Card and that Battlegroup gains 1 of the following bonuses when on Special Orders:

- Any ships in that Battlegroup may add 4" to their movement for this activation (after any Thrust modifiers).
- Special Orders that allow ships to fire weapon systems allow them to fire an additional weapon system. Special Orders that do not allow ships to fire weapon systems allow them to fire 1 Close Action weapon (but does not count for launching Launch Assets).
- Any ships in that Battlegroup may change Orbital Layer, even if they otherwise would not be allowed to do so (all normal restrictions apply such as costing Thrust distance and only entering Atmosphere if they have the Atmospheric special rule).

Famous ships of the class: *Deep Blue, Savant, Voice of Dagon, Leonardo da Vinci*

Though any battleship or dreadnought makes an excellent flagship - especially for the more grandiose admirals - the need for specialist command and control vessels has always existed. The Venice commands from the rear, protecting its high-ranking cargo while doing a superior job at directing the fleet. Venices have already proved popular with admirals who would rather play chess than seek glory.

The vessel is built around an enormous, costly and complex communications array, which provides an admiral with peerless battlespace awareness, boosted, crystal-clear comms, and advanced spatial mapping.

UCM VENICE COMMAND BATTLECRUISER

LENGTH: 1102M

BEAM: 194M

HEIGHT: 409M

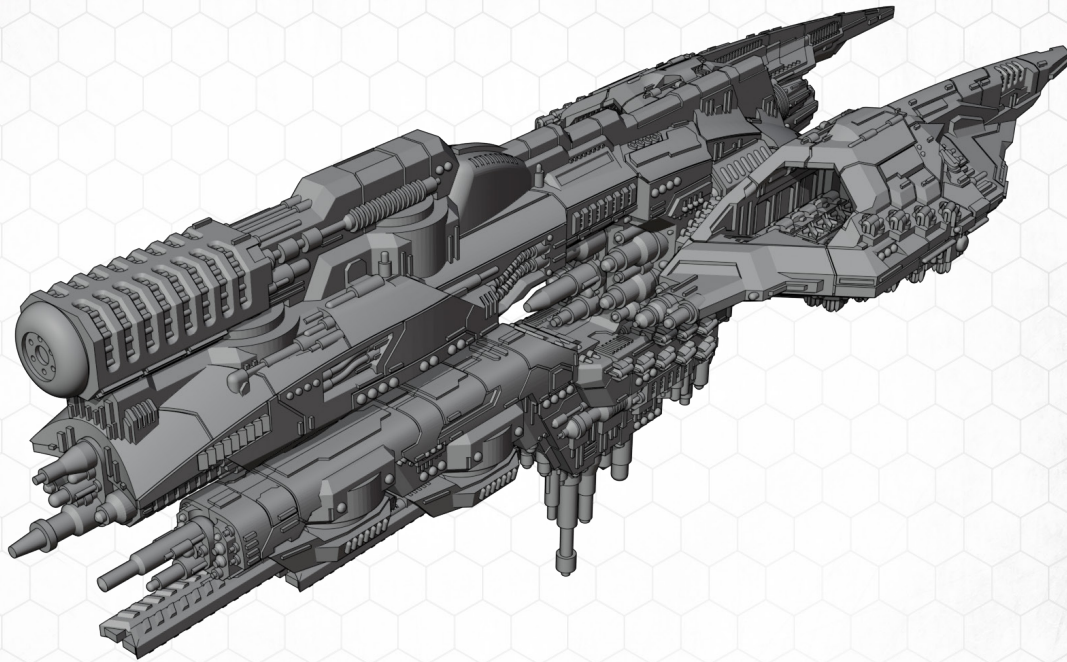
DISPLACEMENT:

12,748,000M³

BURNABY

BATTLESTAR CARRIER

155 PTS



NAME	SCAN	SIG	THRUST	HULL	A	PD	G	T	SPECIAL
BURNABY	6"	6"	7"	13	3+	5	1	H	LAUNCH

TYPE	LOCK	ATTACK	DAMAGE	ARC	SPECIAL
COBRA HEAVY LASER	3+	2	1	F(N)	BURNTHROUGH (6), FLASH
UF-6400 MASS DRIVER TURRETS	3+	4	1	F/S	-
SHARK MISSILE BAYS	4+	5	1	F/S/R	CLOSE ACTION

LOAD	LAUNCH	SPECIAL
FIGHTERS & BOMBERS	3	-

Famous ships of the class: *Adama, Sound of Rain, Spear of Cuprum, Fortitude*

The Burnaby is the Niculum shipyards' response to Titania Fleet Systems' New Berlin and New Rio classes. Based upon the standardised patterns with numerous internal refinements, the Burnaby was designed as an all-rounder. While not having seen much actual combat, its internals are a testbed for new and improved systems, the grand majority of which are a massive success. Its hangar bays feature several refinements, including a reduction in moving parts and an increase in reliability.

Two variants of the Burnaby have been designed, each of them featuring slightly different outward configurations. Niculum is being tight-lipped on the internal differences between the two ships, but outward appearances have the A version's prow weapons feature a dorsal mounted Laser and ventral mounted UF-6400 Mass Drivers. The B version inverts the prow weapon loadout, though no operational differences have been seen between the two versions.

UCM BURNABY BATTLESTAR CARRIER
LENGTH: 956M
BEAM: 301M
HEIGHT: 345M
DISPLACEMENT: 8,017,000M ³

MOSCOW

HEAVY CRUISER

150 PTS



NAME	SCAN	SIG	THRUST	HULL	A	PD	G	T	SPECIAL
MOSCOW	6"	6"	7"	13	3+	5	1	H	-

TYPE	LOCK	ATTACK	DAMAGE	ARC	SPECIAL
UF-4200 MASS DRIVER TURRET	4+	2	1	F/S(L)	LINKED-1
UF-4200 MASS DRIVER TURRET	4+	2	1	F/S(R)	LINKED-1
UF-6400 MASS DRIVER TURRETS	3+	4	1	F/S	LINKED-1
UF-6400 MASS DRIVER TURRETS	3+	4	1	F/S	-
SHARK MISSILE BAY	4+	5	1	F/S/R	CLOSE ACTION

Famous ships of the class: *General Grant, General Lee, Triumph, Dauntless, Rubicon*

The Moscow heavy cruiser builds on the proven Rio class with the addition of another pair of UF-6400 mass driver turrets and additional hull at the expense of speed. Almost as old as the Rio, the class has been in service with the UCMF for over forty years and has accumulated an illustrious service history. There are still few ships in the UCMF's arsenal that deliver such heavy and flexible firepower in a cruiser-sized package. Unfortunately, heavy cruisers have always required disproportionate resources to create, as systems designed for regular cruisers must be pushed to their limits or upgraded beyond their original specifications to cope.

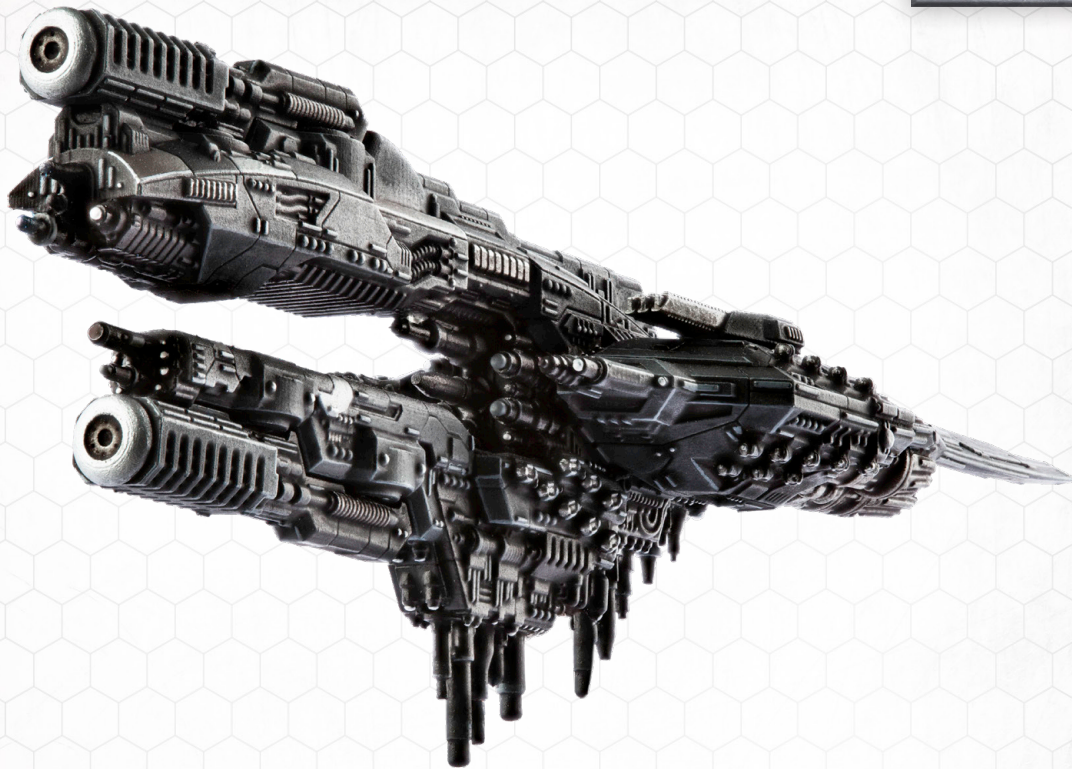
All UCM heavy cruisers are desirable postings for up and coming captains who have already demonstrated promise in command of lesser ships and are usually seen as stepping stones to that greatest of prizes - the command of a mighty battleship. Indeed, the Moscow's UF-6400 armament actually exceeds that of a Beijing class battleship, making it a truly formidable opponent for all but the heaviest ships on the battlefield.

UCM MOSCOW HEAVY CRUISER
LENGTH: 960M
BEAM: 301M
HEIGHT: 341M
DISPLACEMENT: 8,017,000 M ³

ST. PETERSBURG

HEAVY CRUISER

140 PTS



NAME	SCAN	SIG	THRUST	HULL	A	PD	G	T	SPECIAL
ST. PETERSBURG	6"	6"	7"	13	3+	5	1	H	RARE

TYPE	LOCK	ATTACK	DAMAGE	ARC	SPECIAL
COBRA HEAVY LASER PAIR	3+	2	2	F(N)	BURNTHROUGH (8), FLASH
UF-4200 MASS DRIVER TURRET	4+	2	1	F/S(L)	LINKED-1
UF-4200 MASS DRIVER TURRET	4+	2	1	F/S(R)	LINKED-1
SHARK MISSILE BAY	4+	5	1	F/S/R	CLOSE ACTION

Famous ships of the class: *St Petersburg, Arrow of Fire, Solar Fury, Astral Blade*

The St Petersburg is an experimental vessel currently entering limited service with the UCMF. As of 2672, 12 of these ships have been completed with a further 9 under construction. It utilises the familiar Moscow class as a base, but replaces its primary mass driver turrets with two Cobra anti-ship lasers. These intimidating weapons put extreme strain on its power cores (barely upgraded from cruiser level), making frequent maintenance and refits a necessity. However, this is a price more than worth paying for its devastating firepower. If the target is not sliced in half, it will be heated to extreme levels, making the by now stricken ship an easy target for other ships.

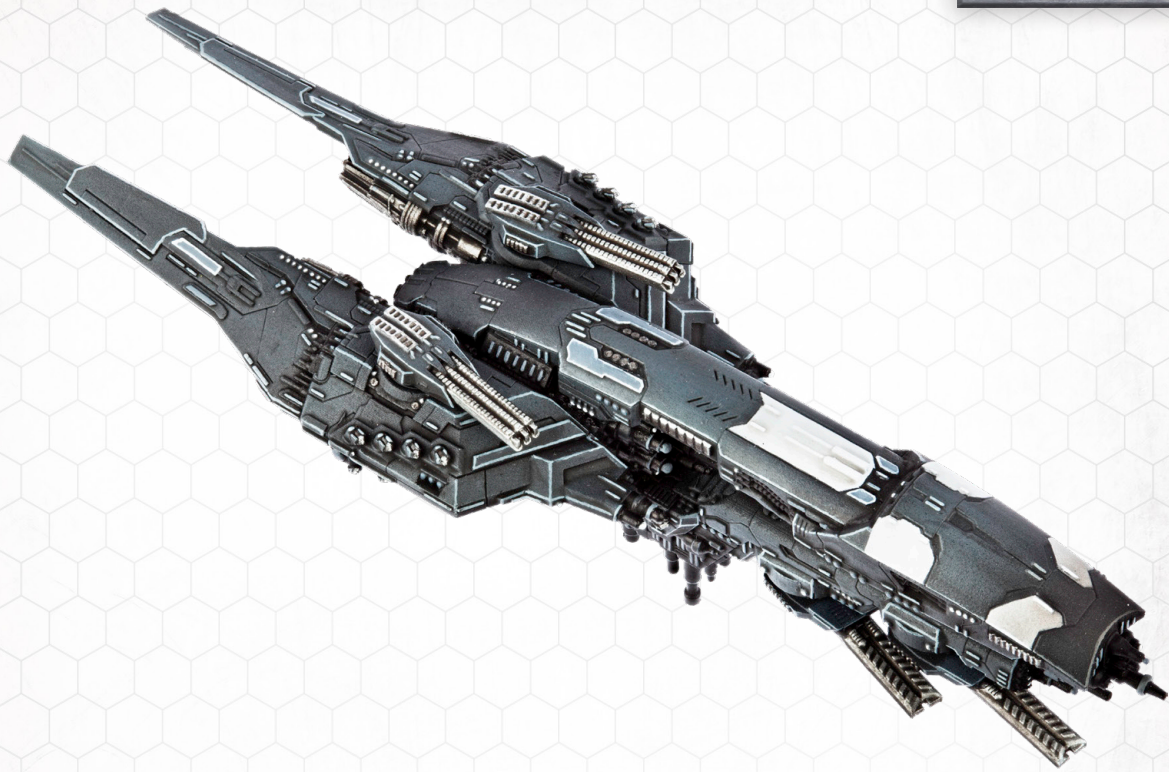
Only experienced captains are given command of such a ship and are usually accompanied by some of the most talented engineers in the fleet. Given the destructiveness of the weapons, the ship's officers are always keen to unleash them, causing almost as much damage to tech-brass relations aboard ship as to the enemy.

UCM ST PETERSBURG HEAVY CRUISER
LENGTH: 956M
BEAM: 301M
HEIGHT: 345M
DISPLACEMENT: 8,240,000M ³

RIO

CRUISER

105 PTS



NAME	SCAN	SIG	THRUST	HULL	A	PD	G	T	SPECIAL
RIO	6"	6"	8"	10	3+	5	1-2	M	-

TYPE	LOCK	ATTACK	DAMAGE	ARC	SPECIAL
UF-4200 MASS DRIVER TURRET	4+	2	1	F/S(L)	LINKED-1
UF-4200 MASS DRIVER TURRET	4+	2	1	F/S(R)	LINKED-1
UF-6400 MASS DRIVER TURRETS	3+	4	1	F/S	SQUADRON (2)
SHARK MISSILE BAY	4+	5	1	F/S/R	CLOSE ACTION

Famous ships of the class: *Gaius Duilius, Constitution, Soldier of Fortune, Song of Hope*

The Rio class cruiser is the most common capital ship type in service with the UCMF in 2672, with 125 vessels currently in the register and several more under construction. It offers a good balance of speed and survivability, coupled with flexible firepower. Its many mass driver turrets are carefully placed to provide excellent traversable firepower, making it highly flexible in fluid, frontline operations where threats can come from multiple quarters.

This class has been the mainstay of the fleet's vanguard operations for many decades and has thus once been the command of many of the fleet's current Admirals. Some ships of this class are over fifty years old by this time and have accumulated accolades and personalities that most newer ships cannot match. Despite their venerable age, these older Rios have been performing admirably across the battlefields of the Reconquest, proving that their storied careers are far from over.

UCM RIO CRUISER
LENGTH: 956M
BEAM: 301M
HEIGHT: 308M
DISPLACEMENT: 7,570,000M3

NEW RIO

CRUISER

105 PTS



NAME	SCAN	SIG	THRUST	HULL	A	PD	G	T	SPECIAL
NEW RIO	6"	6"	8"	10	3+	5	1-2	M	-

TYPE	LOCK	ATTACK	DAMAGE	ARC	SPECIAL
UF-4200 MASS DRIVER TURRET	4+	2	1	F/S(L)	LINKED-1
UF-4200 MASS DRIVER TURRET	4+	2	1	F/S(R)	LINKED-1
UF-6400 MASS DRIVER TURRETS	3+	4	1	F/S	SQUADRON (2)
SHARK MISSILE BAY	4+	5	1	F/S/R	CLOSE ACTION

COUNTS AS

This ship counts as a Rio Cruiser.

Famous ships of the class: *Soldier of Fortune II, Trajan, Thunderchild*

Due to the huge, ongoing losses of the Battle for Earth and the record military spending authorised by the High Council, it is a time of opportunity for all whose business is killing. The Titania Aerospace Corporation has been the biggest winner, to the point where they have spawned a new subsidiary: Titania Fleet Systems. While the company's home colony is justly famous for its cavernous, subterranean armour works, its orbital yards are tiny compared to Niccolum's. TFS is aiming to change that, starting with an entirely re-designed line of cruisers.

Matching the classic Rio class cruiser in performance, the new Titania pattern New Rio (named after New Rio on Titania) requires 30% less crew and 25% less core power, while offering improved crew comforts and endurance. As a result, TFS claim that their vessels offer 35% longer tours of duty than older classes. Only into its first year of production, the Admiralty has been slow to adopt these superior ships due to lack of spares and minimal standardisation with older classes - TFS's only concession to backwards-compatibility was the turrets. As the war grinds on and losses mount, TFS may see more desperate orders and eventually win over top-brass conservatives through combat

UCM NEW RIO CRUISER

LENGTH: CLASSIFIED

BEAM: CLASSIFIED

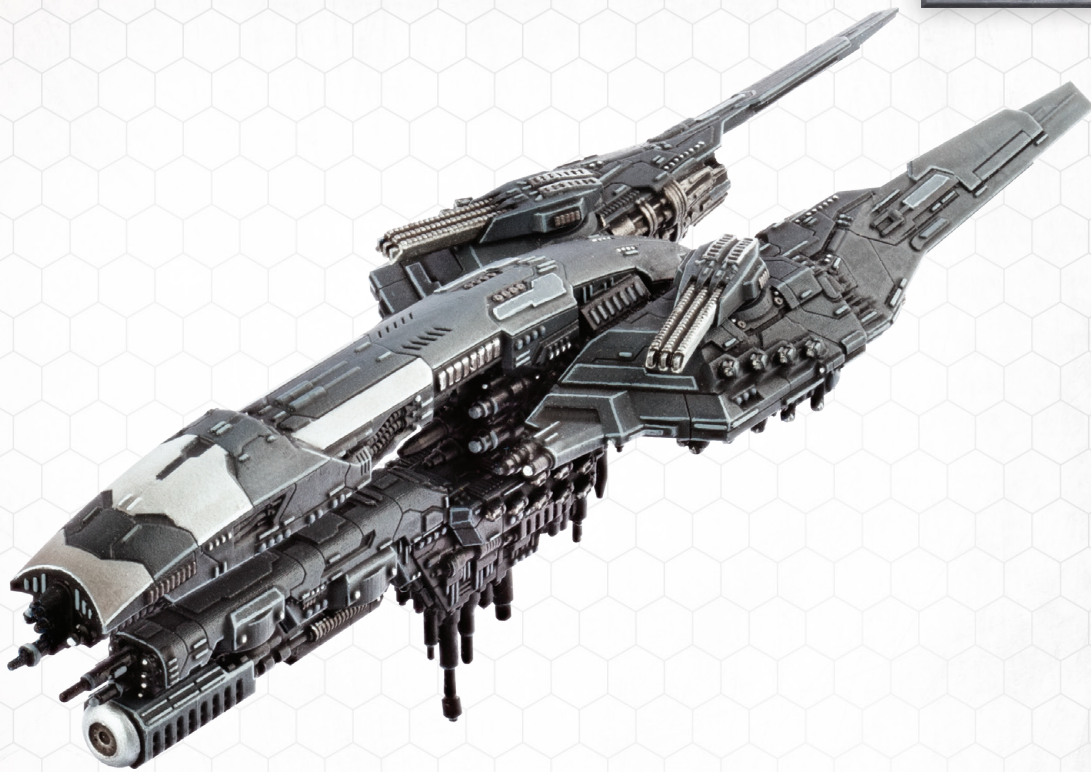
HEIGHT: CLASSIFIED

DISPLACEMENT:
CLASSIFIED

BERLIN

CRUISER

105 PTS



NAME	SCAN	SIG	THRUST	HULL	A	PD	G	T	SPECIAL
BERLIN	6"	6"	8"	10	3+	5	1-2	M	-

TYPE	LOCK	ATTACK	DAMAGE	ARC	SPECIAL
COBRA HEAVY LASER	3+	2	1	F(N)	BURNTHROUGH (6), FLASH
UF-4200 MASS DRIVER TURRET	4+	2	1	F/S(L)	LINKED-1
UF-4200 MASS DRIVER TURRET	4+	2	1	F/S(R)	LINKED-1
SHARK MISSILE BAY	4+	5	1	F/S/R	CLOSE ACTION

Famous ships of the class: *Aurora, Spear of Destiny, Surefire, Ardent*

The Berlin class cruiser was developed in the 2650's as the first cruiser-tonnage platform to bear the formidable Cobra anti-ship laser. This weapon had previously only been mounted on larger ships, where its colossal power requirements would be more manageable. With the constant advances in technology that characterises the build up to the Reconquest, it became possible to use the weapon on smaller ships. The marriage of the Cobra and a more agile hull proved highly effective and the Berlin class quickly became a mainstay of the fleet, although demand from the Admiralty has always outstripped supply from Niccolum's shipyards.

The Berlin is a highly effective vanguard unit, capable of taking significant punishment while responding with a range of weapons systems against multiple threats. The Cobra laser itself is most often employed against high value assets where its focused devastation can prove decisive. The weapon also has the useful side-effect of heating the hull of the target ship, making it far easier for the rest of the fleet to achieve accurate target locks.

UCM BERLIN CRUISER
LENGTH: 956M
BEAM: 301M
HEIGHT: 308M
DISPLACEMENT: 7,682,000M ³

NEW BERLIN

CRUISER

105 PTS



NAME	SCAN	SIG	THRUST	HULL	A	PD	G	T	SPECIAL
NEW BERLIN	6"	6"	8"	10	3+	5	1-2	M	-

TYPE	LOCK	ATTACK	DAMAGE	ARC	SPECIAL
COBRA HEAVY LASER	3+	2	1	F(N)	BURNTHROUGH (6), FLASH
UF-4200 MASS DRIVER TURRET	4+	2	1	F/S(L)	LINKED-1
UF-4200 MASS DRIVER TURRET	4+	2	1	F/S(R)	LINKED-1
SHARK MISSILE BAY	4+	5	1	F/S/R	CLOSE ACTION

COUNTS AS

This ship counts as a Berlin Cruiser

Famous ships of the class: *Borealis*, *Schadenfreude*, *Ardent II*

One issue with the classic Berlin class cruiser has always been the constant refits. The interchangeable, modular nature of traditional colonial shipbuilding left the classes' primary laser weapon exposed, protruding from the hull. This makes heat dissipation challenging, leading to extreme local operating temperatures and frequent failures. Titania Fleet System's new design (named after the city of New Berlin) incorporates the laser into the superstructure, allowing heat to be channelled into the vast mass of the hull for eventual radiation into space. Effectively using the entire ship as a heat-sync allows 150% longer intervals between refits.

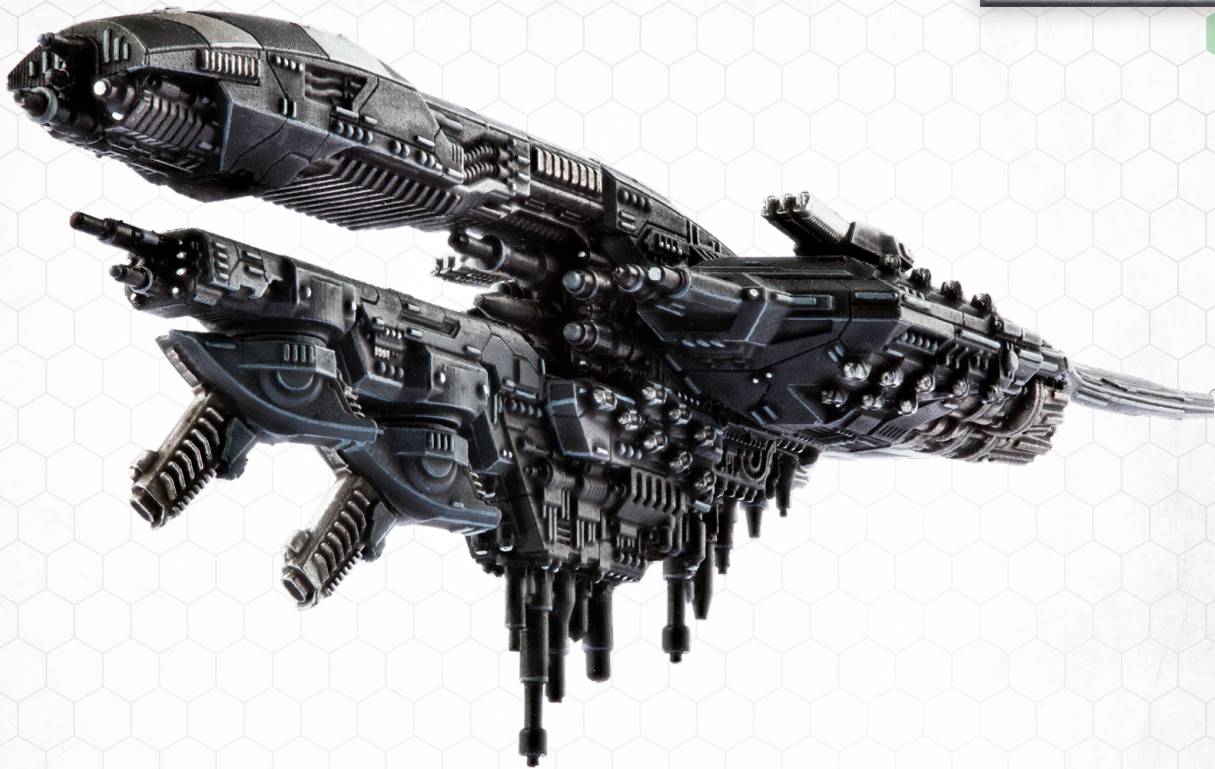
In combat performance, the Titania New Berlin matches the older pattern while requiring less crew, less energy and less maintenance. Despite this, TFS's yards are small, incomplete and incomparable to the vast conurbations orbiting the gas giant Niccolum. Also, the corporation has to compete with over a century's entrenched shipbuilding ethos, and Titania Berlin will likely remain a rare but welcome sight on the frontlines for some time..

UCM NEW BERLIN CRUISER
LENGTH: CLASSIFIED
BEAM: CLASSIFIED
HEIGHT: CLASSIFIED
DISPLACEMENT: CLASSIFIED

MADRID

CRUISER

79 PTS



NAME	SCAN	SIG	THRUST	HULL	A	PD	G	T	SPECIAL
MADRID	6"	6"	8"	10	3+	5	1-2	M	-

TYPE	LOCK	ATTACK	DAMAGE	ARC	SPECIAL
UF-4200 MASS DRIVER TURRET	4+	2	1	F/S(L)	LINKED-1
UF-4200 MASS DRIVER TURRET	4+	2	1	F/S(R)	LINKED-1
UF-B-8000 BOMBARDMENT TURRETS	2+	6	1	F/S/R	BOMBARDMENT
SHARK MISSILE BAY	4+	5	1	F/S/R	CLOSE ACTION

Famous ships of the class: *Punisher, Righteous Revenge, Death's Shadow, Hammer of Justice*

The Madrid class cruiser has long been an essential part of the UCM's Reconquest plan since the first hull was laid down in 2642. This class is the most common capital ship in the UCMF dedicated to the orbital bombardment role – a crucial component in any planetary assault. Its primary armament is a pair of turreted UF/B-8000 bombard cannons - massive calibre conventional weapons capable of hurling heavy shells towards a planet's surface to inflict biblical damage on ground targets. These weapons are also surprisingly crude and thus inexpensive to produce which is vital, since the UCM is always in need of their services.

While it also carries some ship-to-ship weapons, the Madrid requires close protection against enemy vessels above frigate tonnage since its bombardment cannons are useless against void targets. In its intended role, the Madrid can level whole districts in minutes by accurately targeting key areas while leaving the majority of the city intact for later capture. The captaincy of such a vessel is not for the faint hearted or those with a classical sense of honour, who would surely blanch at the idea of visiting ruin on hapless multitudes from orbit.

UCM MADRID CRUISER

LENGTH: 956M

BEAM: 301M

HEIGHT: 308M

DISPLACEMENT:

7,619,000M³

SEATTLE

FLEET CARRIER

132 PTS



NAME	SCAN	SIG	THRUST	HULL	A	PD	G	T	SPECIAL
SEATTLE	6"	6"	8"	10	3+	5	1	M	LAUNCH

TYPE	LOCK	ATTACK	DAMAGE	ARC	SPECIAL
UF-6400 MASS DRIVER TURRETS	3+	4	1	F/S	-
SHARK MISSILE BAY	4+	5	1	F/S/R	CLOSE ACTION

LOAD	LAUNCH	SPECIAL
FIGHTERS & BOMBERS	3	-

Famous ships of the class: Ark Royal, Midway, Enterprise, Waning Tide

The Seattle class is multi-role cruiser tonnage carrier for void-capable fighters and bombers. Its capacious hangars accommodate a large number of these nimble strike craft while the ship itself is armed with four UF-6400 mass drivers in a pair of turrets for direct ship-ship engagements. These characteristics make the Seattle a flexible and valuable asset in almost any engagement despite its lower launch capacity compared to some of the more dedicated carriers of other races.

As a fleet carrier, the Seattle is often positioned towards the rear of the battle, where its strike craft can support the main formation while it stays clear of the engagement. However, since it sports reasonable anti-ship firepower and launch assets have low power requirements, it is possible for the Seattle to use both while conducting advanced manoeuvres. This makes the Seattle a potent tool in the hands of a skilled captain whose carefully directed aggression and quick thinking are rewarded with disproportionate damage to the enemy.

UCM SEATTLE FLEET CARRIER
LENGTH: 899M
BEAM: 301M
HEIGHT: 308M
DISPLACEMENT: 7,382,000M ³

OSAKA

LIGHT CRUISER

82 PTS



NAME	SCAN	SIG	THRUST	HULL	A	PD	G	T	SPECIAL
OSAKA	6"	6"	10"	8	4+	5	2-3	M	-

TYPE	LOCK	ATTACK	DAMAGE	ARC	SPECIAL
UF-6400 MASS DRIVER TURRETS	3+	4	1	F/S	SQUADRON (2)
BARRACUDA MISSILE BAYS	4+	2	1	F/S/R	CLOSE ACTION

Famous ships of the class: *Paladin, Dire Wolf, Belfast II, Wakizashi*

The Osaka class is the standard light cruiser of the UCMF, designed for aggressive strike operations and flanking raids. In combat involving advanced manoeuvres, the class can deliver a mass driver firepower equivalent of the heavier Rio class while offering superior speed and cost effectiveness. However, the Osaka cannot match it in more stable situations where the Rio's full firepower can be unleashed. As such, Admirals are instructed to exploit this class' strength while acknowledging its weaknesses, including its limited close action capabilities compared to full cruisers and its lighter hull.

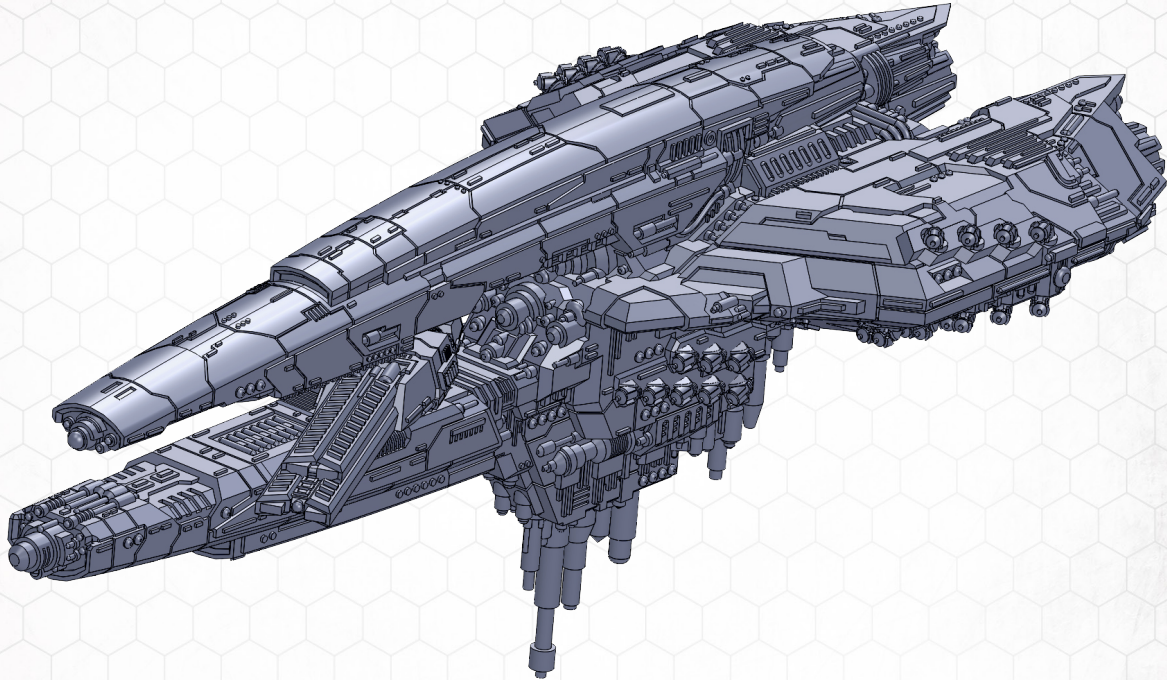
Captains graduating from a frigate-level command often prefer light cruisers such as the Osaka as many of the same combat principles apply and the access to high combat speed remains. Indeed, Osakas are normally deployed in squadrons where they can support each other in battle, since by necessity they often operate away from the main fleet.

UCM OSAKA LIGHT CRUISER
LENGTH: 816M
BEAM: 301M
HEIGHT: 308M
DISPLACEMENT: 7,191,000M ³

ATHENS

LIGHT CRUISER

82 PTS



NAME	SCAN	SIG	THRUST	HULL	A	PD	G	T	SPECIAL
ATHENS	6"	6"	10"	8	4+	5	2-3	M	-

TYPE	LOCK	ATTACK	DAMAGE	ARC	SPECIAL
UF-6400 MASS DRIVER TURRETS	3+	4	1	F/S	SQUADRON (2)
BARRACUDA MISSILE BAYS	4+	2	1	F/S/R	CLOSE ACTION

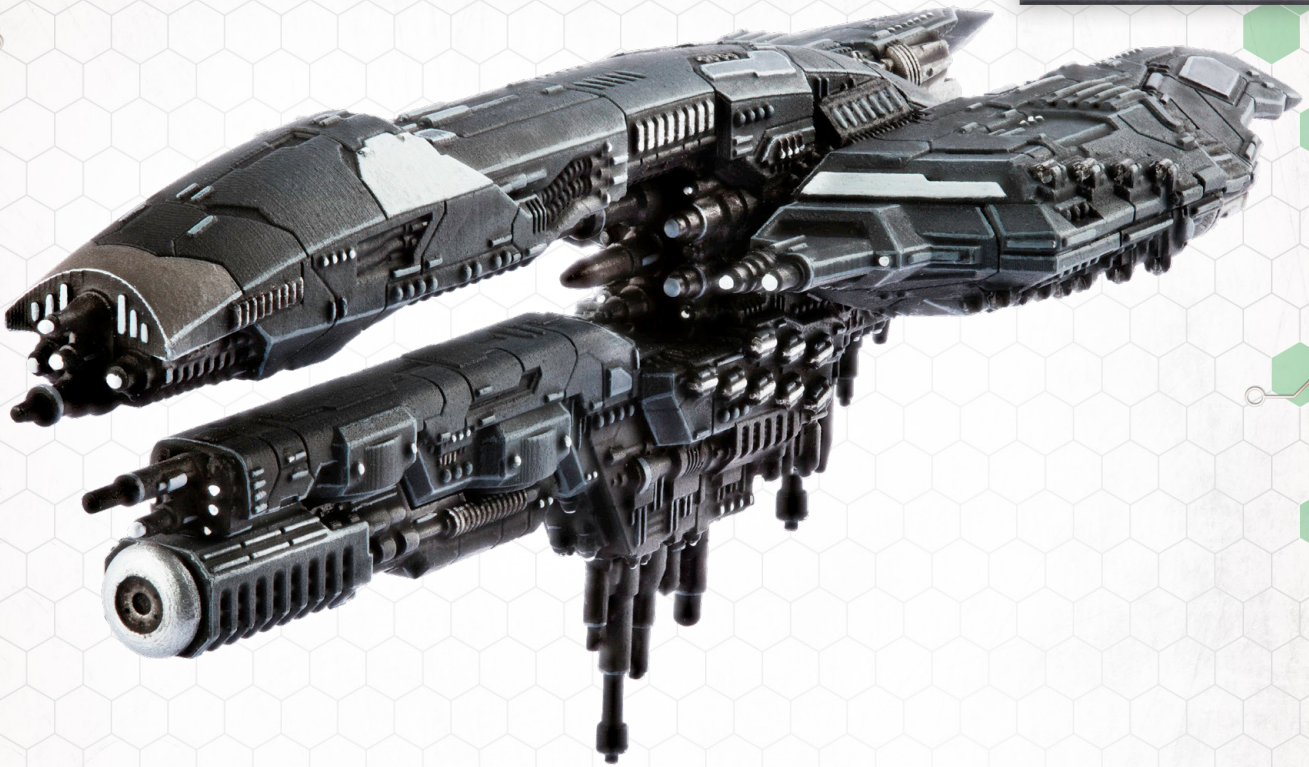
COUNTS AS

This ship counts as an Osaka Cruiser.

NEW CAIRO

LIGHT CRUISER

88 PTS



NAME	SCAN	SIG	THRUST	HULL	A	PD	G	T	SPECIAL
NEW CAIRO	6"	6"	10"	8	4+	5	2-3	M	-

TYPE	LOCK	ATTACK	DAMAGE	ARC	SPECIAL
COBRA HEAVY LASER	3+	2	1	F(N)	BURNTHROUGH (6), FLASH
BARRACUDA MISSILE BAYS	4+	2	1	F/S/R	CLOSE ACTION

Famous ships of the class: *Sunstar, Excalibur, True Arrow, Firebrand*

The New Cairo class light cruiser is a recent development of the Osaka class that only entered service in 2669, making it one of the newest types in the UCMF. The

New Cairo is armed with a single Cobra heavy laser, a powerful weapon capable of cutting to the core of an enemy capital ship and more than capable of slicing a frigate in half in a single burn. However, its utility is limited to a narrow arc in front of the ship, making the New Cairo an even more focused tool than the Osaka in an Admiral's arsenal. Primarily, it excels at hunter-killer missions against priority targets where it can use its superior combat speed to attain a firing position. Much like other light cruisers, the New Cairo is less effective in general engagements or in the heart of the battle, where its lack of flexible firepower is telling.

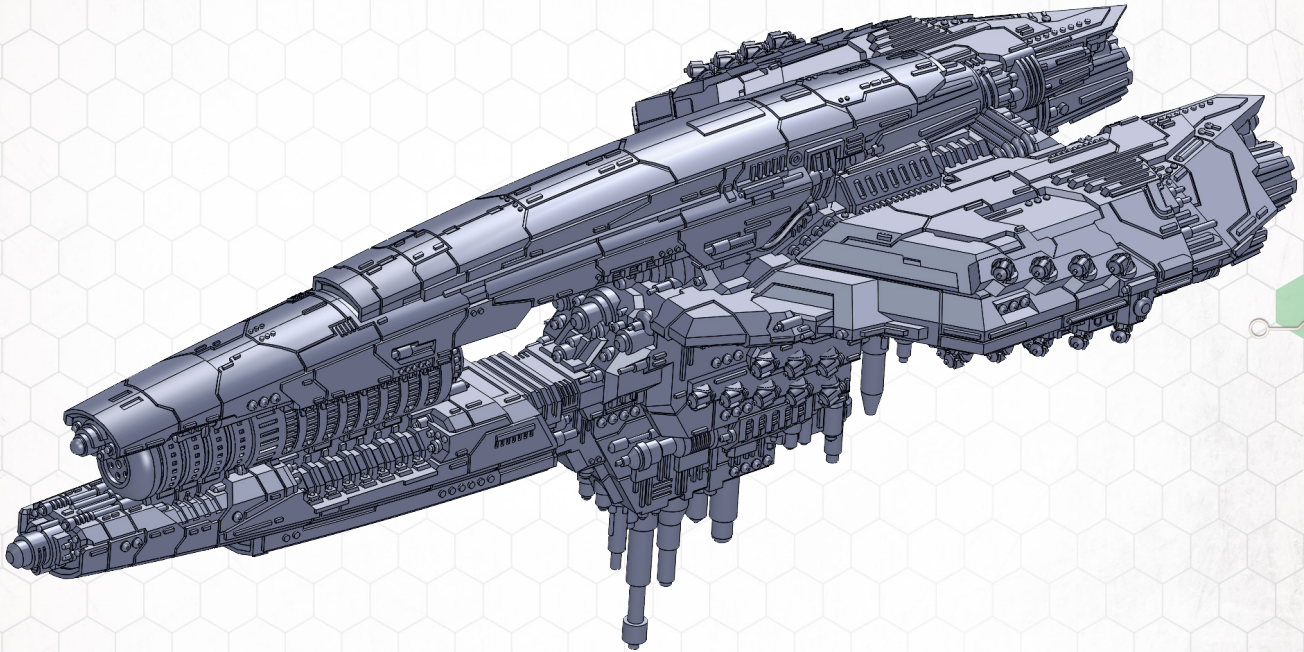
New Cairos tend to attract captains with a focused zeal on the mission at the expense of all surrounding distractions, verging on the single-minded. A ridged adherence to orders coupled with aggression is also essential as these attack dogs must strike decisively and quickly if they are to prevail in the maelstrom of combat.

UCM NEW CAIRO LIGHT CRUISER
LENGTH: 816M
BEAM: 301M
HEIGHT: 308M
DISPLACEMENT: 7,302,000M ³

SARATOGA

LIGHT CRUISER

88 PTS



NAME	SCAN	SIG	THRUST	HULL	A	PD	G	T	SPECIAL
SARATOGA	6"	6"	10"	8	4+	5	2-3	M	-

TYPE	LOCK	ATTACK	DAMAGE	ARC	SPECIAL
COBRA HEAVY LASER	3+	2	1	F(N)	BURNTHROUGH (6), FLASH
BARRACUDA MISSILE BAYS	4+	2	1	F/S/R	CLOSE ACTION

COUNTS AS

This ship counts as a New Cairo Cruiser.

SAN FRANCISCO

TROOPSHIP

105 PTS



NAME	SCAN	SIG	THRUST	HULL	A	PD	G	T	SPECIAL
SAN FRANCISCO	6"	6"	8"	10	3+	5	1-2	M	LAUNCH

TYPE	LOCK	ATTACK	DAMAGE	ARC	SPECIAL
UF-4200 MASS DRIVER TURRET	4+	2	1	F/S(L)	LINKED-1
UF-4200 MASS DRIVER TURRET	4+	2	1	F/S(R)	LINKED-1
BARRACUDA MISSILE BAYS	4+	2	1	F/S/R	CLOSE ACTION

LOAD	LAUNCH	SPECIAL
BULK LANDER	2	-

Famous ships of the class: Warbringer, Ark of Ferrum, Sanctuary, Conqueror

The San Francisco is the UCM's primary means of getting massive troop concentrations planetside. While strike carriers such as the New Orleans utilise dropships in tactical assaults against hardened targets, they cannot deliver the sheer numbers of troops needed in planetary conquest. Troopships instead utilise bulk landers to drop thousands of men direct from orbit. While more efficient than strike carriers, troopships are best utilised away from enemy ships since they cannot operate in the relative safety of atmosphere.

Vessels of the class can accommodate around 25,000 troops and support staff for protracted operations or briefly up to 60,000 in cramped conditions, such as during the opening day/s of full planetary invasions. A San Francisco's bulk landers can also deliver payloads too large for dropships, such as ground batteries, making them essential for fortifying captured or unoccupied ground.

UCM SAN FRANCISCO TROOPSHIP
LENGTH: 956M
BEAM: 301M
HEIGHT: 368M
DISPLACEMENT: 9,588,000M ³

TOULON

FRIGATE

35 PTS



NAME	SCAN	SIG	THRUST	HULL	A	PD	G	T	SPECIAL
TOULON	6"	3"	10"	4	4+	3	2-4	L	-

TYPE	LOCK	ATTACK	DAMAGE	ARC	SPECIAL
UF-2200 MASS DRIVER TRIAD	4+	3	1	F/S	SQUADRON (3)
BARRACUDA MISSILE BAYS	4+	2	1	F/S/R	CLOSE ACTION

Famous ships of the class: Drake, Levant, Constellation, Titania Sunrise

The Toulon class frigate is the standard combat frigate of the UCMF and has been for many years. This class has been the first command of many successful captains, making it an ideal posting for the young and ambitious. It was the first class to use the familiar hull design now utilised in most colonial frigates and has been perfected over many decades. It is a dependable, cost effective vessel with reasonable firepower for its size and is more than capable of taking on its equivalents in enemy fleets. When deployed in numbers this unglamorous class can take on the largest of opponents.

The Toulon is armed with nine UF-2200 'Foe Hammer' mass drivers in triple turret configuration, giving it excellent all round targeting capability and flexibility. These turrets are standard on almost all UCM frigates, offering excellent dependability and common parts, following the efficient design doctrine of the Colonies. The UCMF has close to 400 of these mainstay ships in its register, making it an essential part of the Colonial Fleet for many years to come.

UCM TOULON FRIGATE

LENGTH: 588M

DISPLACEMENT:

2,026,000M³

TAIPEI

MISSILE FRIGATE

39 PTS



NAME	SCAN	SIG	THRUST	HULL	A	PD	G	T	SPECIAL
TAIPEI	6"	3"	10"	4	4+	3	2-6	L	-

TYPE	LOCK	ATTACK	DAMAGE	ARC	SPECIAL
UF-2200 MASS DRIVER TURRET	4+	1	1	F/S	-
PIRANHA MISSILE TURRETS	4+	7	1	F/S	CLOSE ACTION

Famous ships of the class: *Surprise, Undaunted, Assassin's Blade, Blackjack*

The Taipei class missile frigate is a dedicated close assault vessel, designed for first wave attacks, flanking operations and supply interdiction missions. The class excels at bringing firepower to bear that belies its small size at the expense of range. As such, the Taipei must use its superior speed to attain close action range before it can strike with the full force of its Piranha missile system. Its attacks can be blocked by point defence so this class is most potent as a pack hunter, where the sheer volume of munitions can overcome these measures. It is also adept at hunting smaller vessels and non-combat ships, which often feature inferior point defence capabilities.

Such an offensive mission profile clearly suits the bravest of captains who are ready to take risks and happy to operate far from the main fleet. Such attributes are necessary as regrettably, survival rates for the Taipei class are among the worst of all UCMF ships. The repair docks of Niccolum are littered with Taipei's sporting horrific damage that have limped back to safety in defiance of all odds.

UCM TAIPEI MISSILE FRIGATE

LENGTH: 588M

DISPLACEMENT:

2,063,000M³

JAKARTA

AEGIS FRIGATE

32 PTS



NAME	SCAN	SIG	THRUST	HULL	A	PD	G	T	SPECIAL
JAKARTA	6"	3"	10"	4	4+	3	1-4	L	AEGIS (6)

TYPE	LOCK	ATTACK	DAMAGE	ARC	SPECIAL
UF-2200 MASS DRIVER TURRET	4+	1	1	F/S	-
BARRACUDA MISSILE BAYS	4+	2	1	F/S/R	CLOSE ACTION

Famous ships of the class: *Aegis, Shield of Ferrum, Congress, Noble Squire*

The Jakarta class aegis frigate was designed solely for close protection and escort missions around larger ships. While it is equipped with minimal offensive firepower, its real value comes from an impressive array of Aegis-V point defence lasers that equal those on much larger vessels. Crucially, the Jakarta can lend this protection to other ships, guarding them from enemy close action fire and bomber attack. As a high speed frigate, this shield can be directed to where it's needed, increasing efficiency and reducing redundancy. Since Scourge close action weapons are frighteningly effective, the development of this class was a priority from the early planning stages of the Reconquest.

Jakartas tend to attract solid, reliable captains that prefer to work towards the greater good with the minimum of self-aggrandisement. This is just as well, as opportunities for personal glory are few and far between on such a defensively-oriented class. However, the Admiralty recognises these qualities in a ship's captain and after a few tours, such leaders may graduate to the command of a troopship or a high level posting in logistics, where a level-headed team player is prized above any firebrand.

UCM JAKARTA AEGIS
FRIGATE

LENGTH: 588M

DISPLACEMENT:
2,044,000M³

LIMA

FRIGATE

37 PTS



NAME	SCAN	SIG	THRUST	HULL	A	PD	G	T	SPECIAL
LIMA	6"	3"	10"	4	4+	3	1-2	L	DETECTOR, OUTLIER, RARE

TYPE	LOCK	ATTACK	DAMAGE	ARC	SPECIAL
UF-2200 MASS DRIVER TURRET	4+	1	1	F/S	-
BARRACUDA MISSILE BAYS	4+	2	1	F/S/R	CLOSE ACTION

Famous ships of the class: *Pharos, Guiding Light, Nostradamus, Virgil*

The Lima class frigate is equipped with an extremely potent electronic warfare suite and detector array. Its highly focused mission parameters revolve around active scanning the engagement zone for enemy presence and assisting in accurate target acquisition for the main fleet. The presence of Lima's in a UCM formation can increase the effective range of the entire fleet, providing the crucial opportunity of hitting first.

Unfortunately, these systems proved costly and slow to produce during the Lima's construction, greatly limiting the numbers available at the launch of the Reconquest. As of 2672, only 97 are in the register, making it a precious asset given its usefulness. Admirals are under orders to preserve these ships as much as possible and are usually given limited access to the class. Fortunately, it operates best from the rear of any fleet action, giving it a good chance of survival in most engagements.

UCM LIMA FRIGATE

LENGTH: 588M

DISPLACEMENT:
1,928,000M³

NEW ORLEANS

STRIKE CARRIER

32 PTS



NAME	SCAN	SIG	THRUST	HULL	A	PD	G	T	SPECIAL
NEW ORLEANS	6"	3"	10"	4	4+	3	1-2	L	ATMOSPHERIC, LAUNCH, OPEN

TYPE	LOCK	ATTACK	DAMAGE	ARC	SPECIAL
UF-2200 MASS DRIVER TURRET	4+	1	1	F/S	-
BARRACUDA MISSILE BAYS	4+	2	1	F/S/R	CLOSE ACTION

LOAD	LAUNCH	SPECIAL
DROPSHIPS	1	-

Famous ships of the class: *Avenger, Aurum's Grace, Ocean, Everblade*

The New Orleans class strike carrier is a first wave planetary assault vessel designed to deliver ground troops to hot combat zones. The class is a mainstay of almost all UCM fleets and is one of the most common vessels of frigate tonnage to see service in the Reconquest, with almost a thousand operational by 2672. It is a relatively new class as its specifications were laid down late in the development of the UCM military machine to allow for the designs for its cargo to fully mature.

The New Orleans' formidable payload of armoured units and mechanised infantry are deployed by agile dropships, making it ideally suited to fluid, early stage combat operations where heavy enemy action is anticipated. It is one of the largest vessels the UCM has that is capable of atmospheric operations – an essential feature as most UCM dropships cannot operate in the void and must be deployed in atmosphere.

UCM NEW ORLEANS STRIKE CARRIER

LENGTH: 564M

DISPLACEMENT:
1,777,000M³

ISTANBUL

MONITOR

42 PTS



NAME	SCAN	SIG	THRUST	HULL	A	PD	G	T	SPECIAL
ISTANBUL	10"	4"	6"	4	2+	3	2-3	L	MONITOR

TYPE	LOCK	ATTACK	DAMAGE	ARC	SPECIAL
UF-B-9000 MASS DRIVER	3+	3	1	F	ALT-1
UF-B-9000 MASS DRIVER	2+	2	2	F	ALT-1, BOMBARDMENT
BARRACUDA MISSILE BAYS	4+	2	1	F/S/R	CLOSE ACTION

Famous ships of the class: *Fist of Osman, Suliman, Loyal Janissary*

The Istanbul is a typical naval defence monitor. Frigate-sized, it features armour as thick as a battleship's and low speed to match. UCM Monitors achieve this through dispensing with Foldspace capability; they must be brought into system by tugs - large vessels under the auspices of the Fleet Logistical Corps. Once in system, its undersized, overstretched sublight thrusters slowly get the monitor into position.

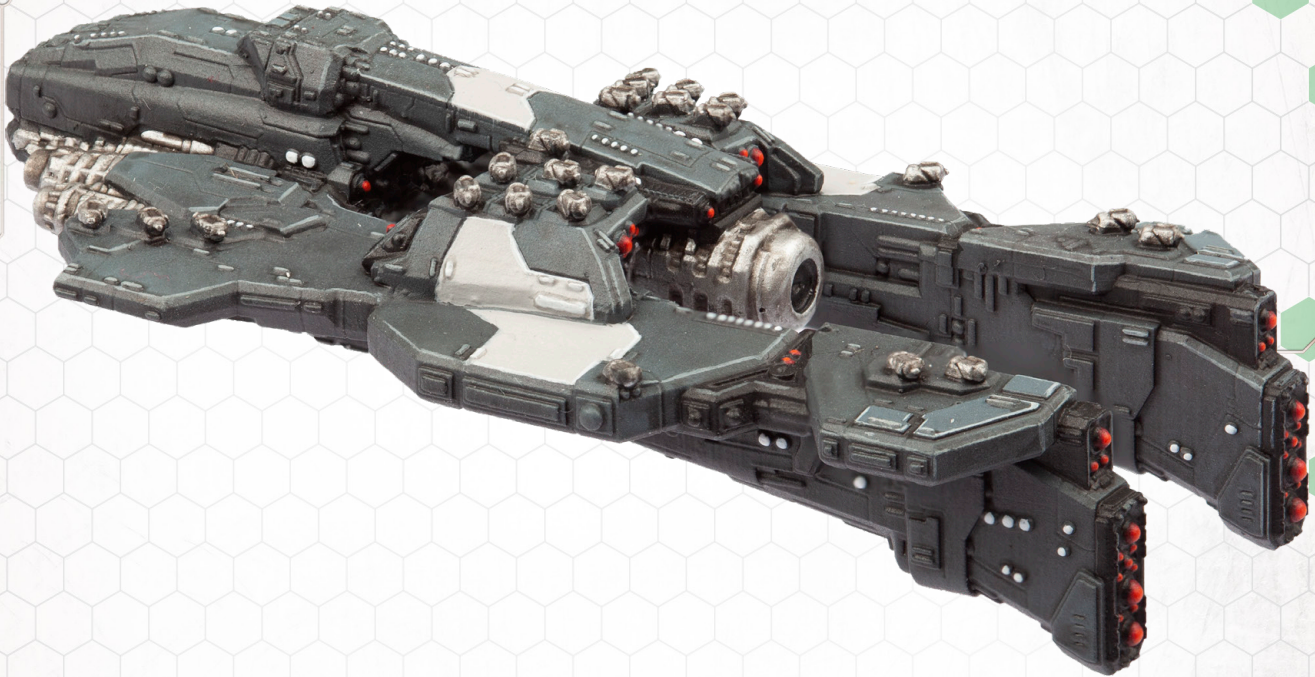
This massive sacrifice of mobility also frees up considerable power for weapons, allowing the Istanbul to be over-gunned for its relatively small size. It features a massive UF-B-9000 mass-driver, in a unique, rotating mount; supporting its defensive role. This allows the Istanbul to easily engage targets in higher orbital layers or directed towards the surface for bombardment.

UCM ISTANBUL MONITOR
LENGTH: 530M
DISPLACEMENT: 3,616,000M ³

VIENNA

ESCORT FRIGATE

48 PTS



NAME	SCAN	SIG	THRUST	HULL	A	PD	G	T	SPECIAL
VIENNA	6"	4"	6"	4	2+	3	2-3	L	AEGIS (4)

TYPE	LOCK	ATTACK	DAMAGE	ARC	SPECIAL
MAMBA LASER	3+	2	1	F	BURNTHROUGH (3), FLASH
SHARK MISSILE BAYS	4+	5	1	F/S/R	CLOSE ACTION

Famous ships of the class: Musketeer, Arquebus, Count Nicholas

The Vienna shares some advantages and disadvantages of its sister class: low speed, high armour, and high firepower. However, it must be used in a slightly more conventional manner, since it suffers the same loss of performance when firing between orbital layers as ordinary vessels. It makes up for this by mounting an anti-ship laser - the smallest UCM ship to be able to do so - due to its otherwise low power requirements.

It also fits into a quite different role: that of battleship escort. Used in this way, its laser serves the useful secondary purpose of heating the target, assisting the much larger ship's gunnery. Given this application, the Vienna also mounts additional point-defence clusters for limited aegis capability, although not up to the level of the Jakarta, which was designed for this role alone. Since its sublight speed matches that of a slow battleship, it can keep up.

UCM VIENNA ESCORT FRIGATE
LENGTH: 530M
DISPLACEMENT: 3,838,000M³

HAVANA

DESTROYER

55 PTS



NAME	SCAN	SIG	THRUST	HULL	A	PD	G	T	SPECIAL
HAVANA	6"	4"	10"	6	4+	3	2-3	L2	LAUNCH, RARE

TYPE	LOCK	ATTACK	DAMAGE	ARC	SPECIAL
SHARK MISSILE BAYS	4+	5	1	F/S/R	CLOSE ACTION

LOAD	LAUNCH	SPECIAL
LIGHT TORPEDOES	1	LIMITED (2)

TYPE	THRUST	LOCK	ATTACK	DAMAGE	SPECIAL
LIGHT TORPEDOES	14"	2+	4	1	-

Famous ships of the class: *Mjolnir, Black Prince, Vengeance*

The Havana is the earliest type of destroyer currently in service with the UCMF, having first seen combat with the Shaltari in 2596. Its design stems from older and largely outmoded naval strategies revolving around the use of torpedoes as primary weapons. Since the 2620s, the Admiralty shifted away from the idea of these colossal munitions due to their very limited capacity and a tendency towards overkill. Both traits make them unreliable and expensive weapons compared to mass drivers.

As the vast naval build-up to the Reconquest gathered steam, it was deemed that torpedoes should not consume precious resources for anything other than large vessels. As such, production of the Havana more or less ceased. Those that remain (and have survived the first few years of carnage) are now highly prized assets, able to deliver stunning amounts of damage to any target, disproportionate to their size. While the Havana may be a dinosaur in the modern fleet, old school admirals greatly covet the spectacle of the swift and violent hammer blow that only a 200m long explosive can provide.

UCM HAVANA DESTROYER
LENGTH: 772M
DISPLACEMENT: 4,305,000M ³

VANCOUVER

ESCORT CARRIER

55 PTS



NAME	SCAN	SIG	THRUST	HULL	A	PD	G	T	SPECIAL
VANCOUVER	6"	4"	10"	6	4+	3	1-3	L2	LAUNCH

TYPE	LOCK	ATTACK	DAMAGE	ARC	SPECIAL
BARRACUDA MISSILE BAYS	4+	2	1	F/S/R	CLOSE ACTION

LOAD	LAUNCH	SPECIAL
FIGHTERS & BOMBERS	2	-

Famous ships of the class: *Hornet, Commandment, Atoll*

The Vancouver class emerged from the UCMF Naval Design Bureau in the late 2640s in response to the obvious need for more cost effective fighter and bomber support than the well armed Seattle class offered. The Bureau opted for a vessel of destroyer tonnage - that is, a ship larger than a frigate but smaller than a cruiser for ease of mass manufacture. As a relatively new class, its numbers are currently low but increasing as the ever growing demands and spoils of the Reconquest spur the yards into unprecedented productivity.

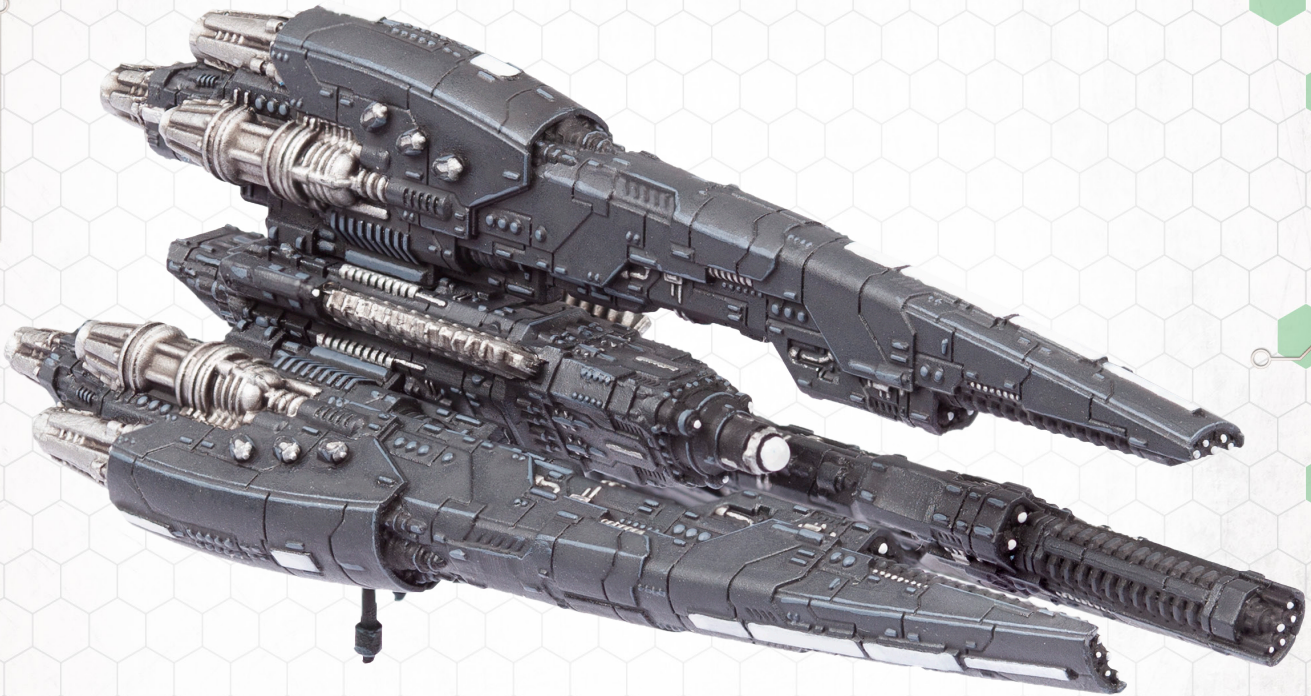
As a fighting ship, the Vancouver is very poorly armed in comparison with the Seattle, but offers a greater launch capacity in comparison to its cost. As such, it is best utilised in rearguard and central fleet operations, where conventional warships can protect it from enemy action. Thanks to its bomber compliment, the Vancouver is particularly dangerous to smaller vessels with poor point defence, while its fighters can lend crucial protection to other vessels.

UCMF VANCOUVER ESCORT CARRIER
LENGTH: 642M
DISPLACEMENT: 4,008,000M ³

KYIV

HEAVY DESTROYER

65 PTS



NAME	SCAN	SIG	THRUST	HULL	A	PD	G	T	SPECIAL
KYIV	6"	4"	8"	6	3+	5	1-2	L2	-

TYPE	LOCK	ATTACK	DAMAGE	ARC	SPECIAL
UF-9000 TWIN MASS DRIVER	3+	2	2	F	FUSILLADE-1, RE-ENTRY
BARRACUDA-S MISSILE BAYS	4+	3	1	F/S/R	CLOSE ACTION

Famous ships of the class: Aleksy the Great, Green Square, Wrathful

The Kiev is an interesting vessel, in that it features a pair of super-heavy, UF-9000 series mass drivers in a fixed position. These impressive weapons are heavier gauge than those mounted in almost any other UCMF warship, save the mighty dreadnoughts. The mission role of Kiev class is to hunt and kill the most heavily armoured enemy vessels with swift brutality. They are unsubtle sledgehammers and the bane of enemy flagships. Many an enemy admiral has met their ignominious deaths at the hands of this smaller adversary since its inception in the 2640s.

These weapons are also large enough in gauge to fire new and experimental munitions featuring molecular repulsion technology. These can cut through atmosphere and reach targets normally safe from the attentions of orbiting spacecraft.

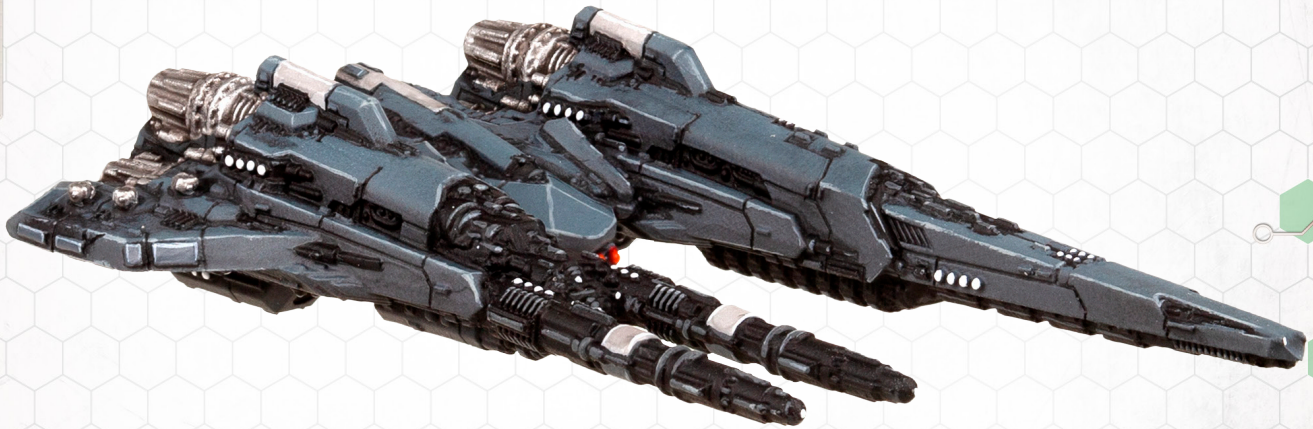
It is also an unusual ship due to its triple-hull configuration, borrowing core superstructure elements from standard UCMF destroyers, although with reinforced armour superior to that of most other light vessels. Although artificial gravity creates the comforting illusion of "up and down" as usual, the fact that other segments of the ship are oriented differently never ceases to confuse fresh crew members!

UCM VANCOUVER ESCORT CARRIER
LENGTH: 642M
DISPLACEMENT: 5,339,000M³

NUUK

EM HARASSER

30 PTS



NAME	SCAN	SIG	THRUST	HULL	A	PD	G	T	SPECIAL
NUUK	6"	3"	14"	5	5+	2	2-3	L2	OUTLIER, VECTORED

TYPE	LOCK	ATTACK	DAMAGE	ARC	SPECIAL
HAYWIRE BLASTER	4+	1	0	F	CLOSE ACTION (BEAM), HAYWIRE

HAYWIRE

If this weapon hits, the targeted ship receives a Power Fluctuations token (even if it is not a Dreadnought). The ship suffers D3 Hull Points if going on Special Orders. If the targeted ship is using the Silent Running special orders, Signature is returned to normal instead. The targeted ship may not go on silent running.

Famous ships of the class: *Blizzard, Shard of Ice, Frostblade, Harpoon, Nuuk*

The Nuuk is a unique support vessel based on the UCMF's newest cutter, the Reykjavik; a specialist platform to begin with, it offers extreme speed at the expense of survivability. The UCMS Nuuk was built by Battlefleet Eden using a Reykjavik damaged during a combat trial. By simply refitting the power-hungry mass drivers for a satellite-grade EM Haywire Blaster, they created a tool that the Admiralty was quick to appreciate. Such was the tactical potential that many hulls intended to be Reykjaviks were converted to Nuuks at the construction stage.

The Nuuk's ability to directly damage an opponent is limited, but a concentrated, close-range blast from its beamer can render an enemy ship confused and unable to compute complex tasks, such as plotting firing solutions for all weapons. This is devastatingly effective at hobbling capital ships, although Nuuk captains must use their speed to get behind their targets before their small ship is vaporised by a vengeful giant.

UCM NUUK EM HARASSER
LENGTH: 552M
DISPLACEMENT: 3,600,000M ³

REYKJAVIK

CUTTER

55 PTS



NAME	SCAN	SIG	THRUST	HULL	A	PD	G	T	SPECIAL
REYKJAVIK	6"	3"	14"	5	5+	2	2-3	L2	OUTLIER, VECTORED

TYPE	LOCK	ATTACK	DAMAGE	ARC	SPECIAL
UF-9000-S TWIN MASS DRIVER	3+	2	2	F(N)	-

Famous ships of the class: Arrow, Lancelot, Harpoon, North Star

Cutters have been a specialist part of the UCMF since its inception. The concept is simple: a fast ship near frigate tonnage designed to chase and slay already fast enemy scouts, outliers and support vessels. The Reykjavik is the newest of these, having only entered widespread service early in the Reconquest. The vessel is state of the art, crew-centric and one of the fastest ships in the fleet through the simple expedient of a bloated drive bank more suited to a cruiser.

Reykjaviks generally operate ahead of the main fleet and are often tasked with making the first small but crucial kills in an engagement. The class is well equipped to achieve this, packing a pair of fixed UF-9000-S mass drivers: short-barrelled versions of those found on dreadnought turrets. These weapons are powerful enough to worry anything, though cutter captains would do well to consider the fragility and specialist role of their ships before tackling larger prey.

UCM REYKJAVIK CUTTER

LENGTH: 552M

DISPLACEMENT:

3,561,000M³

SANTIAGO

CORVETTE

22 PTS



NAME	SCAN	SIG	THRUST	HULL	A	PD	G	T	SPECIAL
SANTIAGO	6"	2"	14"	2	5+	2	1-3	L	ATMOSPHERIC, OUTLIER

TYPE	LOCK	ATTACK	DAMAGE	ARC	SPECIAL
STINGRAY MISSILE BAYS	4+	3	1	F/S/R	AIR TO AIR, CLOSE ACTION, SQUADRON (3)

Famous ships of the class: Jolly Roger, Queen Anne's Revenge, Flying Dragon, Golden Hind

The Santiago class corvette is a small, atmospheric-capable vessel of sub-frigate tonnage. These nimble, fast ships were designed for a single purpose - hunting down enemy atmospheric fleet assets. They are armed with a potent array of air-to-air missiles, utterly lethal to the frigate sized vessels that are its favourite prey. In particular, strike carriers and their precious cargo are prime targets since these strategically vital ships are shielded from the majority of enemy fire while operating in atmosphere.

Santiagos are favoured by the most aggressive captains fresh from Niccolum's Naval Academy. Atmospheric combat is not for the faint of heart as it must be fought only at close range where the small Santiago is always vulnerable to return fire. The uniquely challenging nature of these operations is a fiery crucible from which many budding captains do not return, but those that do are often destined for greatness in the future.

LYSANDER

STEALTH LIGHTER

27 PTS



NAME	SCAN	SIG	THRUST	HULL	A	PD	G	T	SPECIAL
LYSANDER	6"	0"	12"	2	6+	2	1-3	L	ATMOSPHERIC, FULL CLOAK, LAUNCH, OPEN, RARE

TYPE	LOCK	ATTACK	DAMAGE	ARC	SPECIAL
BARRACUDA MISSILE BAY	4+	2	1	F/S/R	CLOSE ACTION

LOAD	LAUNCH	SPECIAL
DROPSHIPS	1	-

STEALTH OBSERVATION

This ship can Survey a Cluster regardless of its Battlegroup Tonnage Value.

Famous ships of the class: *Hope's Spark, Blue Shade, Eternal Darkness, Azure Night, Leprechaun, Silent Blade*

The Lysander class Lighter has been a lynchpin in the UCM's covert ops since it entered service in 2669. It is the UCMF's first fully cloaked warship, pushing multiple 1st gen classified stealth systems to their current limits of scale. The class is equipped for extended infiltrations including limited surface landings to scout potential invasion sites and support Resistance groups.

Initially the class was Level-6 classified and generally reserved for Marine Force Black - the UCM's most elite troops under the Office of Naval Intelligence. Rumours circulated among the admiralty, where demands for access to such a tool grew from whispers into shouts. As the Battle for Earth loomed, the Lysander's existence was confirmed and production ramped up. While still precious assets, limited numbers are now available to support regular frontline operations and first strike incursions.

UCM LYSANDER STEALTH LIGHTER
LENGTH: 460M
DISPLACEMENT: 1,506,000M ³