

DROPZONE

COMMANDER

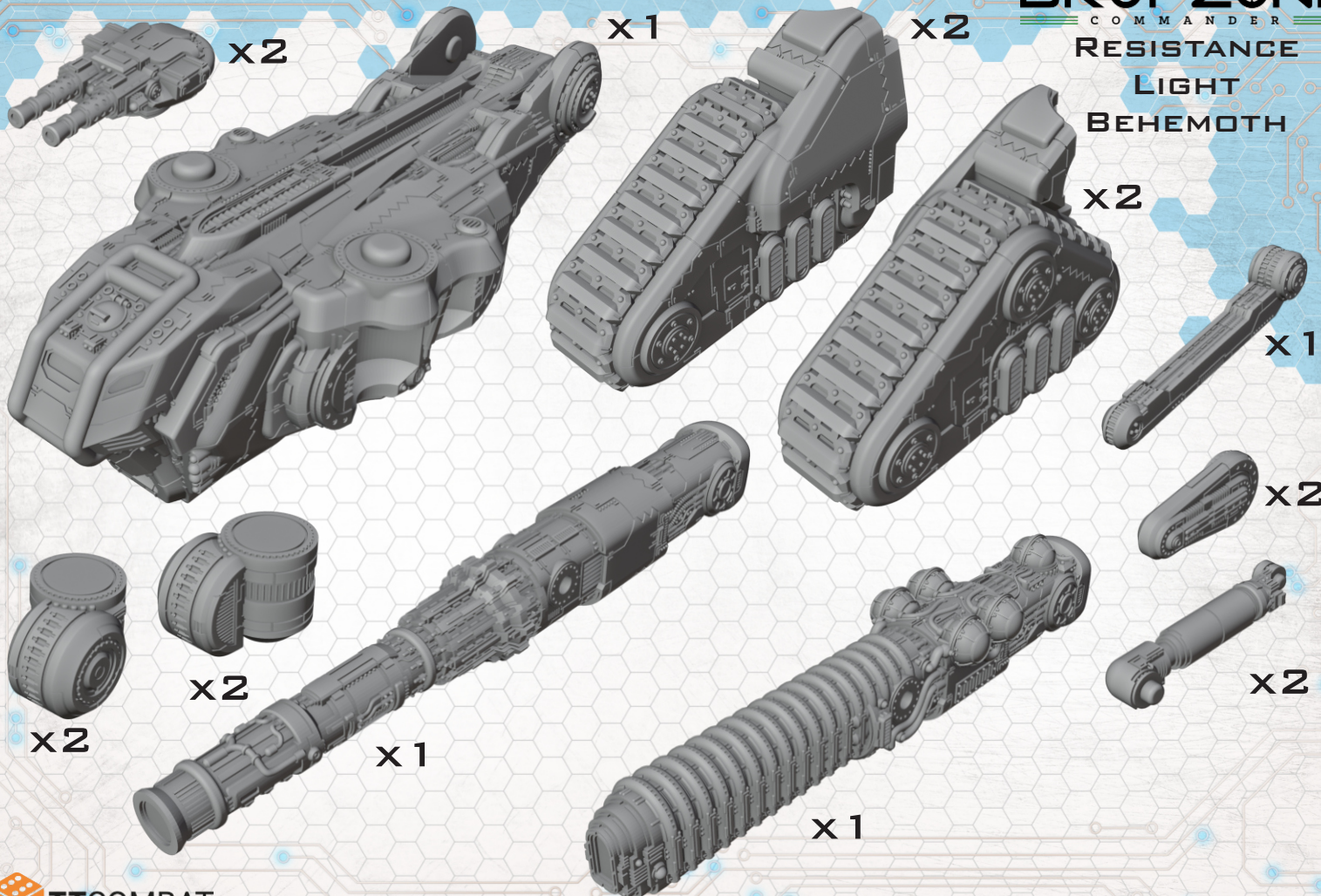
RESISTANCE

LIGHT

BEHEMOTH



RESISTANCE LIGHT BEHEMOTH



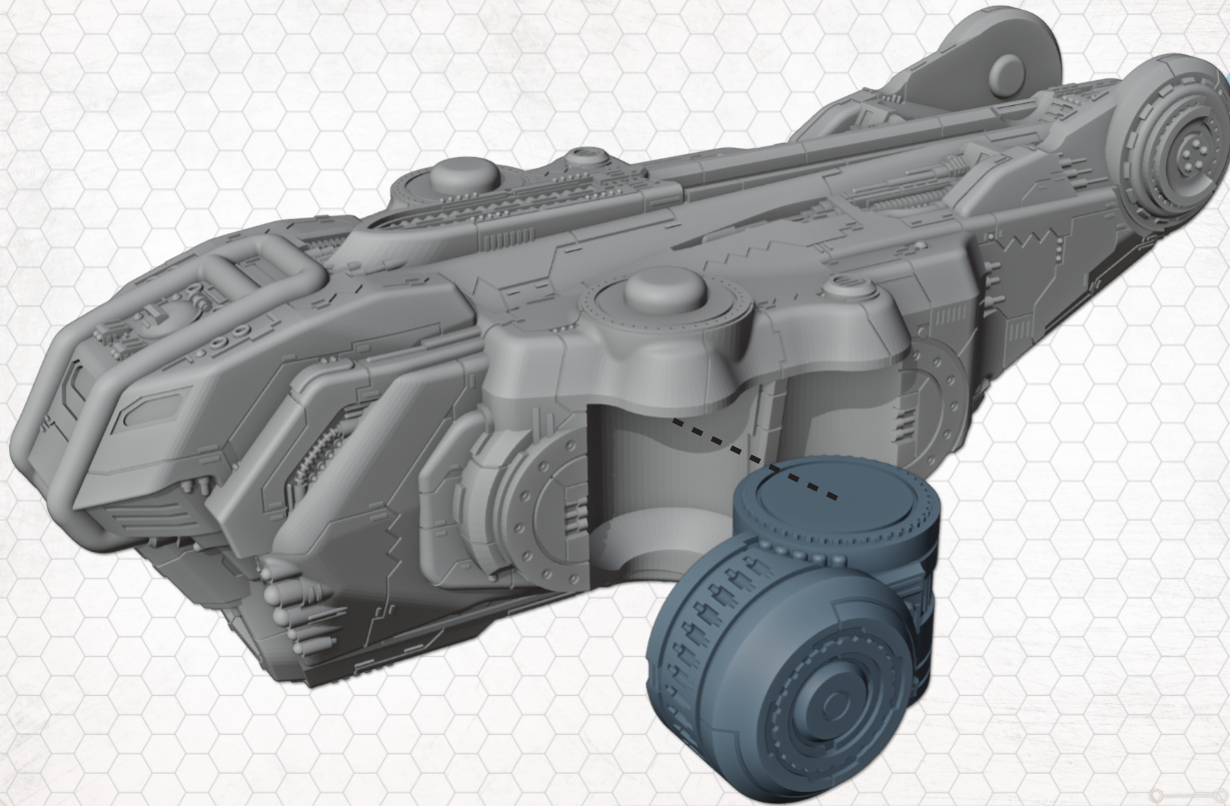
DROPZONE

COMMANDER

RESISTANCE

LIGHT

BEHEMOTH



DROPZONE

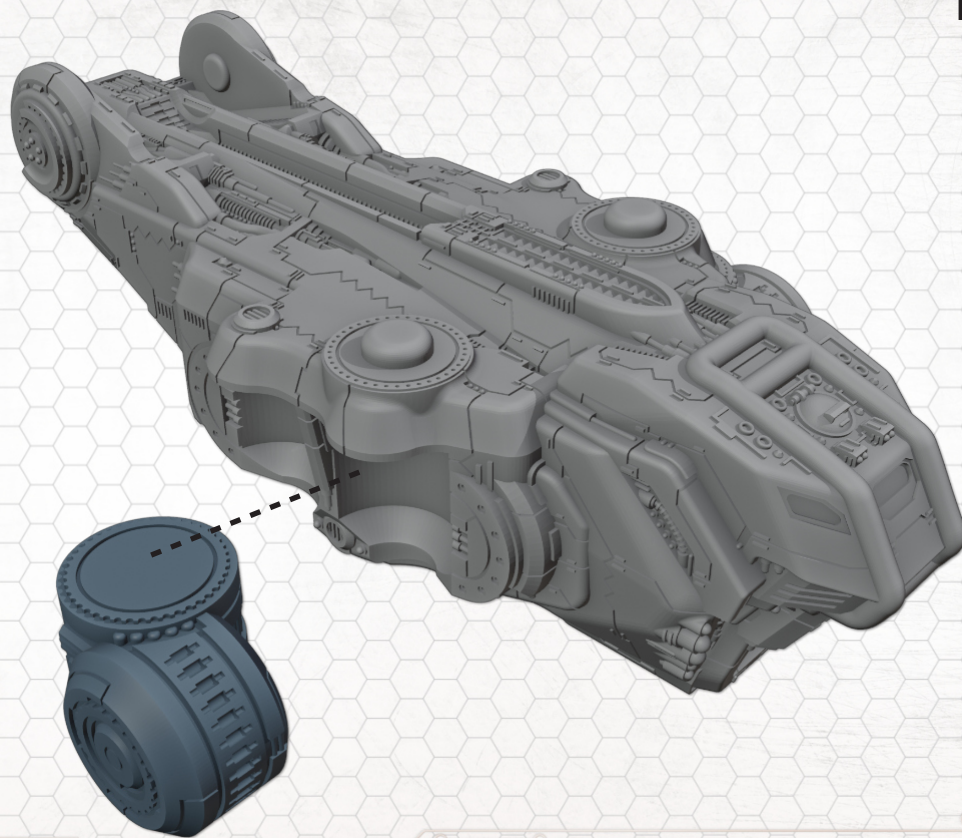
COMMANDER

RESISTANCE

LIGHT

BEHEMOTH





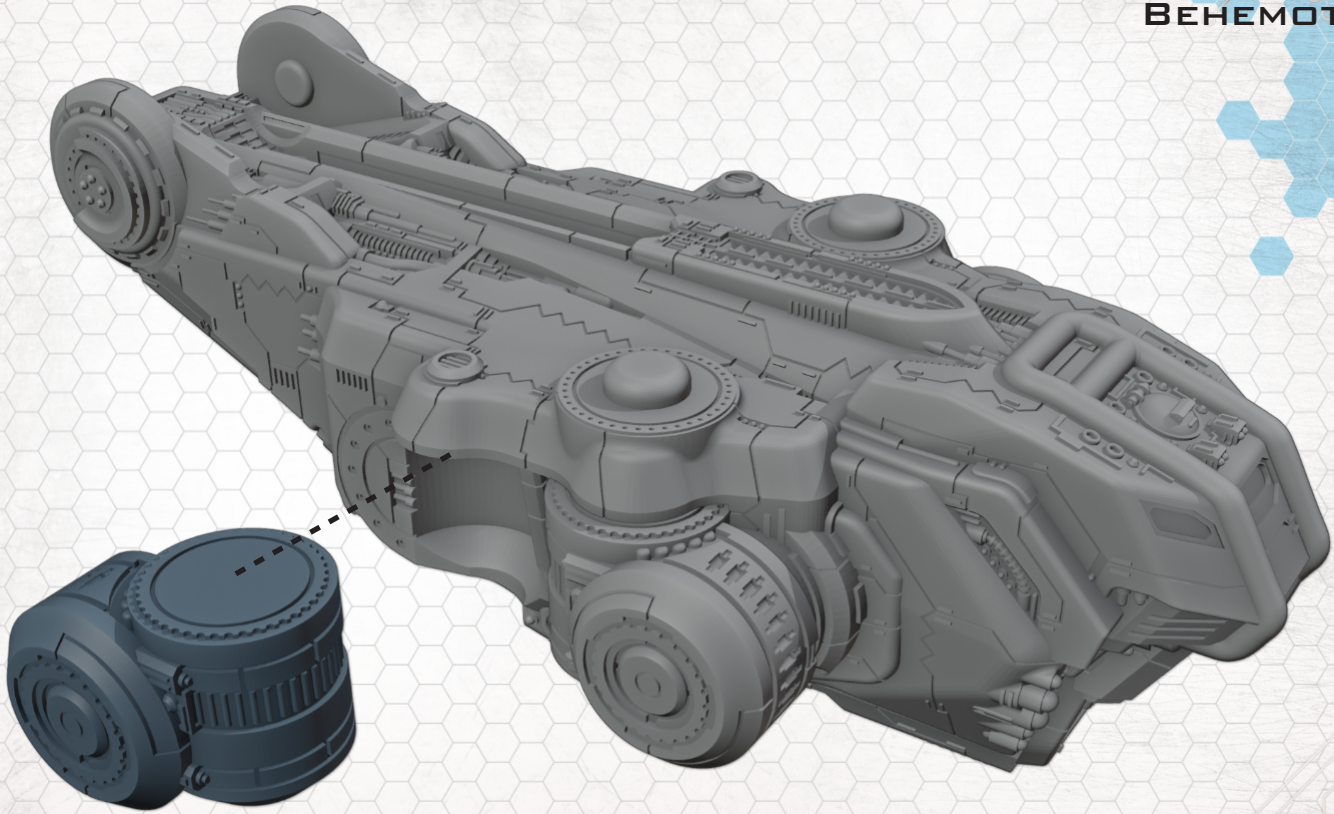
DROPZONE

COMMANDER

RESISTANCE

LIGHT

BEHEMOTH



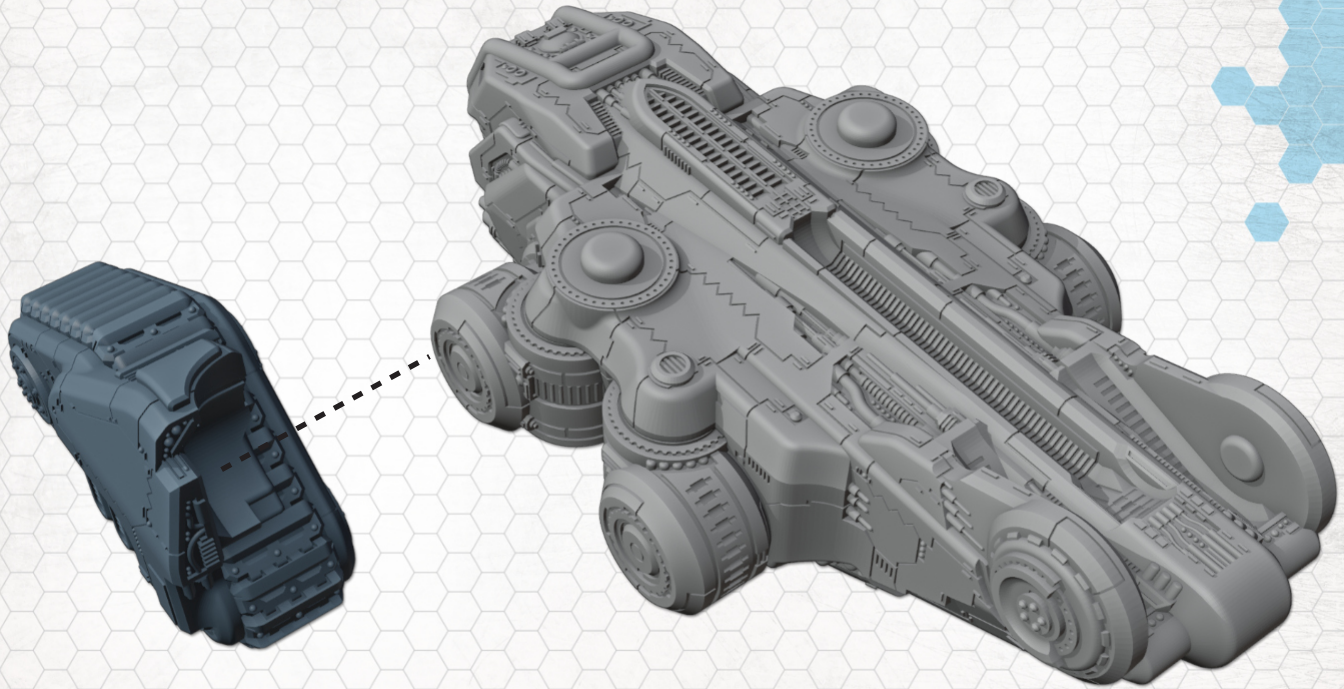
DROPZONE

COMMANDER

RESISTANCE

LIGHT

BEHEMOTH



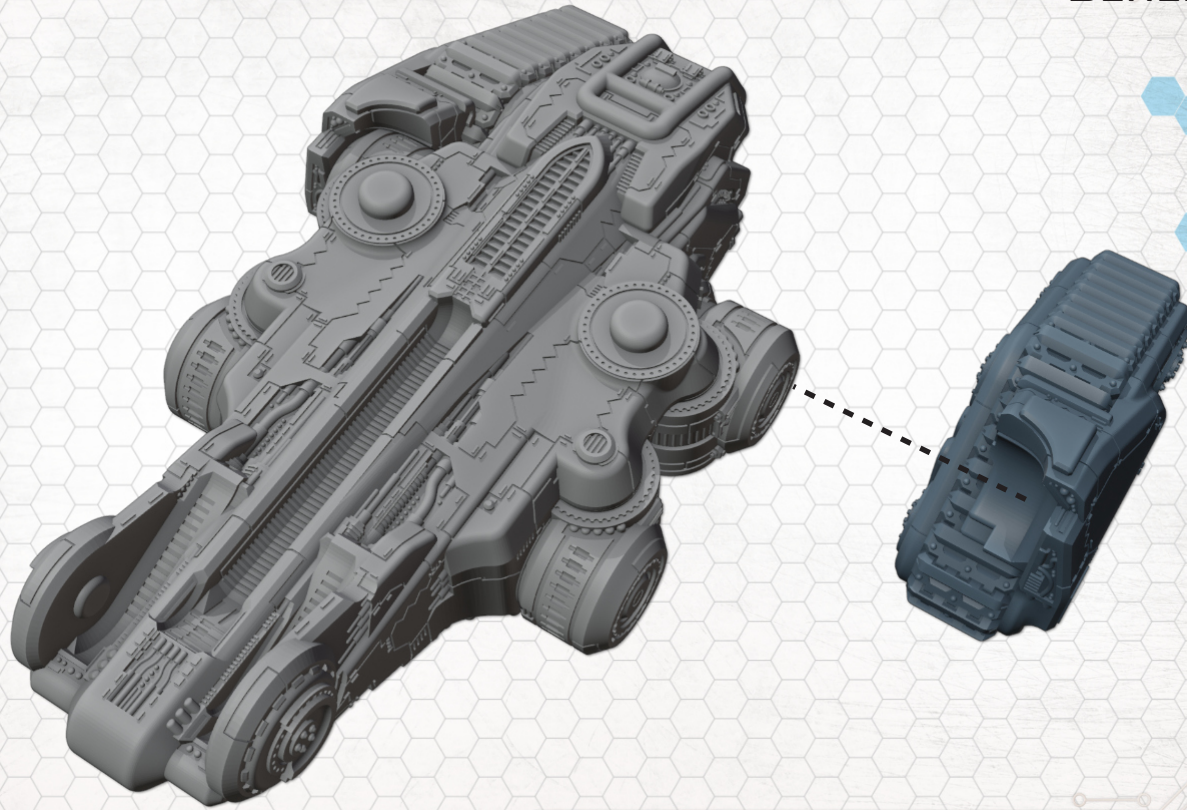
DROPZONE

COMMANDER

RESISTANCE

LIGHT

BEHEMOTH



DROPZONE

COMMANDER

RESISTANCE

LIGHT

BEHEMOTH



DROPZONE

COMMANDER

RESISTANCE

LIGHT

BEHEMOTH



DROPZONE

COMMANDER

RESISTANCE

LIGHT

BEHEMOTH





CERBERUS MINING ENGINE

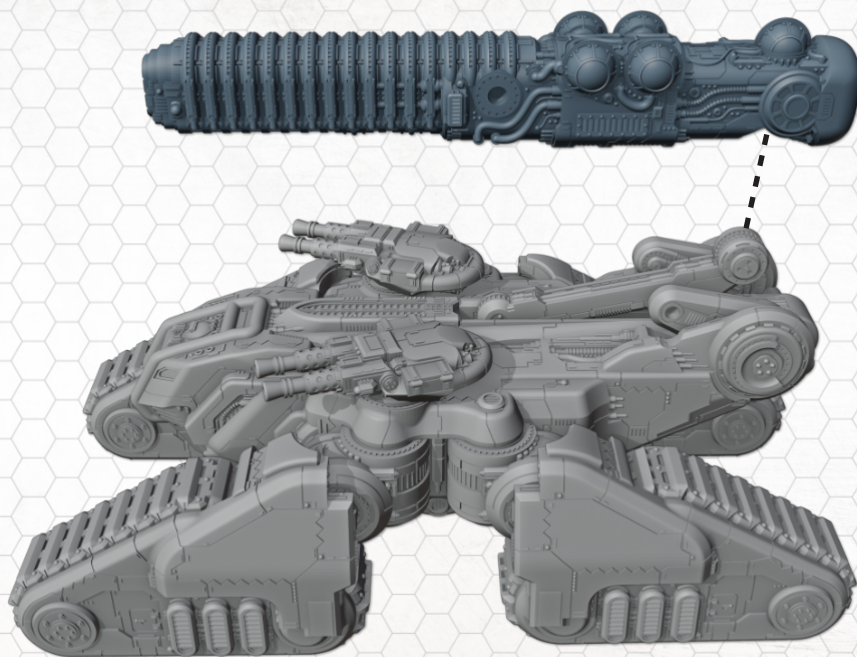


Use slow acting glue or pin parts in the following steps to allow adjustment of the main weapon position

CERBERUS MINING ENGINE



CERBERUS MINING ENGINE



CERBERUS MINING ENGINE



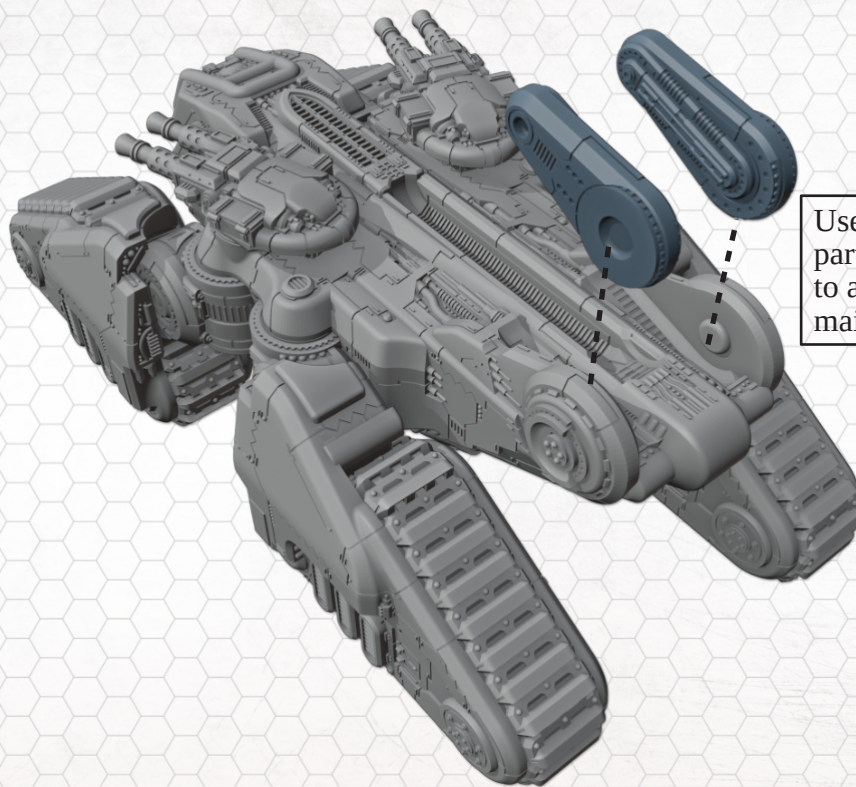
CERBERUS MINING ENGINE



CERBERUS MINING ENGINE



AVERNUS MINING ENGINE



Use slow acting glue or pin parts in the following steps to allow adjustment of the main weapon position

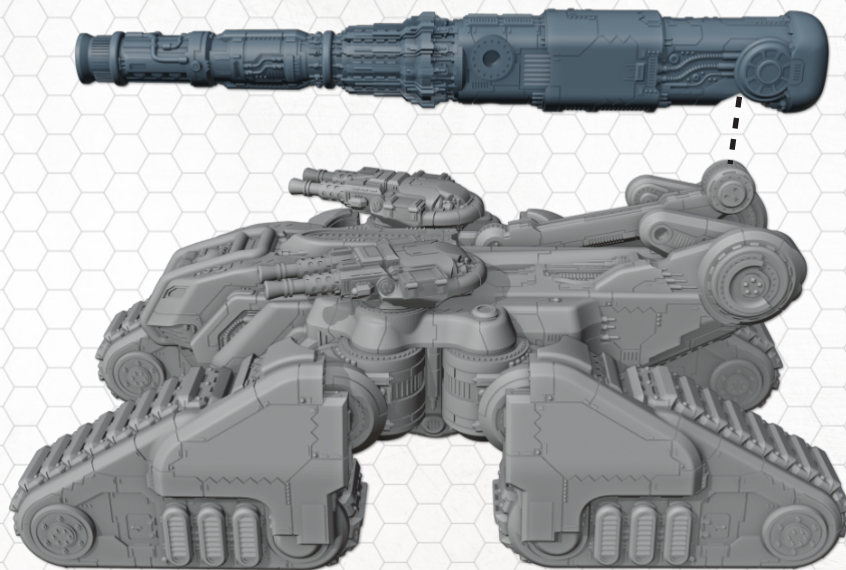
AVERNUS MINING ENGINE

DROPZONE
COMMANDER
RESISTANCE
LIGHT
BEHEMOTH



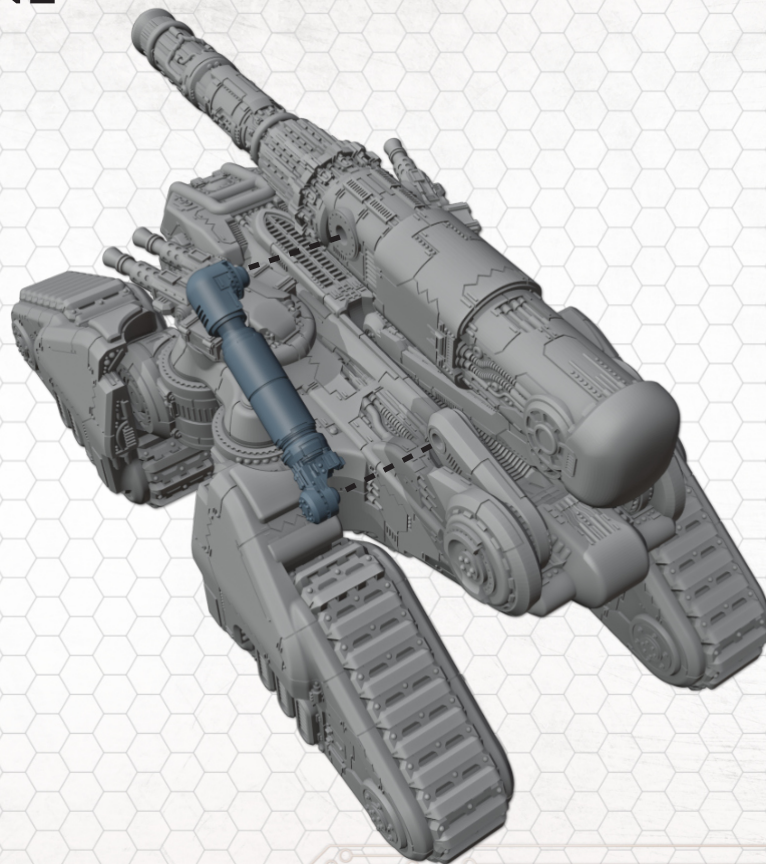
AVERNUS MINING ENGINE

DROPZONE
COMMANDER
RESISTANCE
LIGHT
BEHEMOTH



AVERNUS MINING ENGINE

DROPZONE
COMMANDER
RESISTANCE
LIGHT
BEHEMOTH



AVERNUS MINING ENGINE

DROPZONE
COMMANDER
RESISTANCE
LIGHT
BEHEMOTH



AVERNUS MINING ENGINE

DROPZONE
COMMANDER
RESISTANCE
LIGHT
BEHEMOTH

