

TOTAL SOLUTIONS®

WET WIPES

CART HANDLE WIPES

One-Step Cleaner

- EXCELLENT FOR CLEANING AND DEODORIZING SHOPPING CART HANDLES AND SURFACES

KEEP OUT OF REACH OF CHILDREN

NET CONTENTS: 450

6" x 6" (15.24 cm x 15.24 cm) Premoistened Wipes

Manufactured By: Total Solutions®
PO Box 240014 • Milwaukee, WI 53224 • 1-800-743-6417



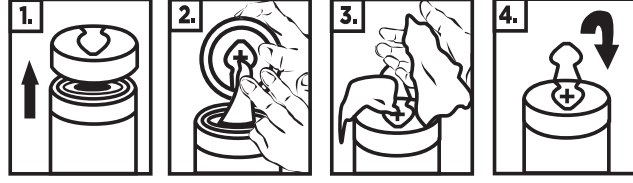
Please Recycle.

Canister made from 25% post-consumer recycled plastic.

1574.061616

DIRECTIONS FOR DISPENSING

1. Remove lid by lifting upward. Remove foil seal.
2. Pull towel from center of the roll and thread through "X" on the underside of the lid.
3. Close lid. Pull towel at 90° angle.
4. Snap hinged cap back into place to ensure towels stay moist.



DISPOSAL

Offer empty container for recycling. If recycling is not available, discard container in trash. Do not flush wipes.

NFPA® RATINGS

Health: 1; Flammability: 1; Reactivity: 0

CONTAINS/CAS NUMBER:

Water/7732-18-5; Alcohol Ethoxylate/68991-48-0; n-Alkyl (60% C14, 30% C16, 5% C12, 5% C18) dimethyl benzyl ammonium chlorides/68391-01-5; n-Alkyl (68% C12, 32% C14) dimethyl ethyl benzyl ammonium chlorides/68956-79-6; Perfume/Proprietary

*For industrial and commercial use only.
For additional information, see Safety Data Sheet.*

Canister made from 25% post-consumer recycled plastic. 1574.061616



Please Recycle.

*For industrial and commercial use only.
For additional information, see Safety Data Sheet.*

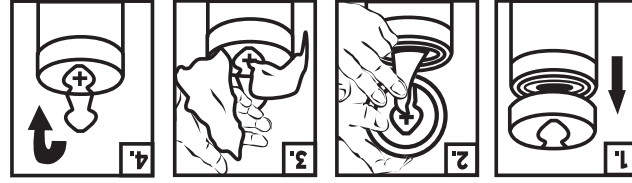
CONTAINS/CAS NUMBER:
Water/7732-18-5; Alcohol Ethoxylate/68991-48-0; n-Alkyl (60% C14, 30% C16, 5% C12, 5% C18) dimethyl benzyl ammonium chlorides/68391-01-5; n-Alkyl (68% C12, 32% C14) dimethyl ethyl benzyl ammonium chlorides/68956-79-6; Perfume/Proprietary

NFPA® RATINGS

Health: 1; Flammability: 1; Reactivity: 0

DISPOSAL

Offer empty container for recycling. If recycling is not available, discard container in trash. Do not flush wipes.



- ### DIRECTIONS FOR DISPENSING
1. Remove lid by lifting upward. Remove foil seal.
 2. Pull towel from center of the roll and thread through "X" on the underside of the lid.
 3. Close lid. Pull towel at 90° angle.
 4. Snap hinged cap back into place to ensure towels stay moist.

TOTAL SOLUTIONS®

WET WIPES

CART HANDLE WIPES

One-Step Cleaner

- EXCELLENT FOR CLEANING AND DEODORIZING SHOPPING CART HANDLES AND SURFACES

KEEP OUT OF REACH OF CHILDREN

NET CONTENTS: 450

6" x 6" (15.24 cm x 15.24 cm) Premoistened Wipes

Manufactured By: Total Solutions®
PO Box 240014 • Milwaukee, WI 53224 • 1-800-743-6417