

**⚠ WARNING:** This product can expose you to Myrcene, which is known to the State of California to cause cancer. For more information go to [www.P65Warnings.ca.gov](http://www.P65Warnings.ca.gov).

**NFPA® RATINGS**

Health: 0; Flammability: 1; Reactivity: 0

**CONTAINS/CAS NUMBER:**

Water/7732-18-5; Dimethicone/63148-62-9; Carnauba Wax/8015-86-9; C9-11 Alcohols Ethoxylated/68439-46-3; Polysorbate 80/9005-65-6; d-Limonene/5989-27-5; Triethanolamine/102-71-6

# TOTAL SOLUTIONS®

WET WIPES

## WOOD CLEANER & POLISH WIPES

Cleans, Dusts and Polishes  
in One Easy Step

• CONDITIONS SURFACES,  
LEAVING A NATURAL SHINE  
WITHOUT A GREASY RESIDUE



**Do Not Flush**

See side panel for additional information.

**KEEP OUT OF REACH OF CHILDREN**

**NET CONTENTS: 25**

10" x 12" (24.5 cm x 30.48 cm) Premoistened Wipes

Manufactured By: Total Solutions® • 1-800-743-6417  
PO Box 240014 • Milwaukee, WI 53224 • [athea.com](http://athea.com)

**DIRECTIONS**

These wipes are the easiest and most convenient way to keep furniture looking brand new. In one easy step you can clean smudge marks, remove dust and dirt and condition surfaces against everyday wear. Best of all, it leaves a natural, ultra-protective shine without a greasy residue or wax buildup.

These wipes are perfect for quick dusting touch-ups to remove fingerprints or water marks.

Use them on all types of wooden furniture including: chairs, tables, wall and entertainment units, cabinets and paneling. They are also great for use with vinyl and leather, marble, Formica, chrome, brass and stainless steel.

**Helpful Hints For Use**

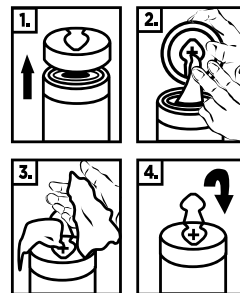
Start with larger pieces of furniture first and then move on to smaller pieces. When using on old or unknown furniture finishes, test a wipe in an inconspicuous area. Do not use on floors as it may leave them slippery.

**DIRECTIONS**

To clean and polish furniture, press wipe on desired surface. Start with gentle pressure and gradually increase the pressure as you go. Fold and turn wipe frequently. When wipe becomes soiled, discard and use a fresh one.

**DIRECTIONS FOR DISPENSING**

1. Remove lid by lifting upward. Remove foil seal.
2. Pull towel from center of the roll and thread through "X" on the underside of the lid.
3. Close lid. Pull towel at 90° angle.
4. Snap hinged cap back into place to ensure towels stay moist.



**DISPOSAL**

Offer empty container for recycling. If recycling is not available, discard container in trash. Do not flush wipes.

*For industrial and commercial use only.  
For additional information,  
see Safety Data Sheet.*

Canister made from 25% post-consumer recycled plastic.



Please Recycle.