

NFPA® RATINGS

Health: 1; Flammability: 2; Reactivity: 0

CONTAINS/CAS NUMBER:

Water/7732-18-5; Isopropanol/67-63-0; Alkyl
C12-18 Dimethylbenzyl Ammonium
Chloride/68391-01-5; Alkyl C12-14
Dimethylethylbenzyl Ammonium
Chloride/85409-23-0; Ethanol/64-17-5

TOTAL SOLUTIONS®

WET WIPES

TOILET SEAT WIPES

Cleans and Freshens

• CLEANS ON CONTACT AND
EVAPORATES WITHIN SECONDS

DESCRIPTION

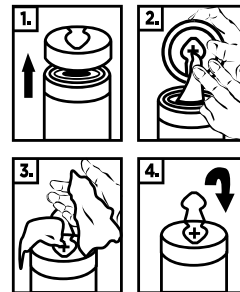
With these wipes you can be assured of a clean and usable toilet seat every time. Each wipe is premoistened with a potent formula that cleans on contact and evaporates within seconds.

DIRECTIONS

Wipe toilet seat. Discard after use.

DIRECTIONS FOR DISPENSING

1. Remove lid by lifting upward. Remove foil seal.
2. Pull towel from center of the roll and thread through "X" on the underside of the lid.
3. Close lid. Pull towel at 90° angle.
4. Snap hinged cap back into place to ensure towels stay moist.

**DISPOSAL**

Offer empty container for recycling. If recycling is not available, discard container in trash. Do not flush wipes.

**Do Not Flush****KEEP OUT OF REACH OF CHILDREN****NET CONTENTS: 160**

6" x 6" (15.24 cm x 15.24 cm) Premoistened Wipes

Manufactured By: Total Solutions® • 1-800-743-6417
PO Box 240014 • Milwaukee, WI 53224 • athea.com

For industrial and commercial use only.
For additional information,
see *Safety Data Sheet*.
Canister made from 25% post-consumer recycled plastic.



Please Recycle.

1500.021722