



The new degree of comfort®



Residential Electric
Professional Classic
Tankless Water Heaters

Professional Classic® tankless electric water heaters offer continuous hot water

Performance Features

- On demand, consistent and continuous hot water
- Compact and stylish with digital temperature control in increments of 1° ranging from 80°F to 140°F*
- Robust copper immersion heating elements with brass top increases durability and are threaded for easy replacement
- Simple Installation
- Digital temperature display
- External controls to adjust temperature in increments of 1°*

Average GPM Usage by Application

Standard Hand Sink	0.5 GPM
Washing Machine	1 to 1.5 GPM
Water-Saver Shower Head	1.5 GPM
Dishwasher	1 to 2 GPM
Kitchen Sink	1 to 2 GPM
Standard Shower Head	2.0 GPM
Bath Tub	≥ 4 GPM
Whole-Home	Up to 6 GPM

Average Gallons Per Minute (GPM) based on 2010 Plumbing Standards

Warranty

- 5-Year heating chamber and 1-year parts limited warranty

See Residential Warranty Certificate for complete information

*RTEX-04 and RTEX-06 only show output temperature and are non-thermostatically controlled

MODEL NUMBER	TEMPERATURE RISE °F								
	0.5 GPM	1.0 GPM	1.5 GPM	2.0 GPM	2.5 GPM	3.0 GPM	4.0 GPM	5.0 GPM	6.0 GPM
SINGLE POINT-OF-USE									
RTEX-04	48°	24°	16°	12°	-	-	-	-	-
RTEX-06	75°	37°	25°	19°	-	-	-	-	-
MULTIPLE APPLICATIONS									
RTEX-08	+	55°	36°	27°	22°	18°	14°	-	-
RTEX-11	+	75°	50°	38°	30°	25°	19°	-	-
RTEX-13	+	89°	59°	44°	36°	30°	22°	-	-
RTEX-18	+	+	82°	62°	49°	41°	31°	25°	-
RTEX-24	+	+	109°	82°	66°	55°	41°	33°	27°
RTEX-27	+	+	+	92°	74°	62°	46°	37°	31°
RTEX-36	+	+	+	+	98°	82°	62°	49°	41°

+ Temperature electronically limited setting on adjustable thermostat on front cover

POINT-OF-USE

For 0.5 GPM to 2.0 GPM Applications



RTEX-04, RTEX-06

MULTIPLE APPLICATIONS

For 0.5 GPM to 6.0 GPM Applications



RTEX-08, RTEX-11, RTEX-13



RTEX-18



RTEX-24, RTEX-27



RTEX-36



Tested and certified by the Water Quality Association against NSF/ANSI 372 for lead free compliance.



RTEX-04, RTEX-06

Unique Features:

- External Digital Display – shows outlet temperature
- Durable Copper Immersion single heating element, field serviceable
- Simple Installation – Bottom 1/2" NPT water connections



RTEX-08, RTEX-11, RTEX-13

Unique Features:

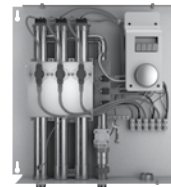
- External Adjustable Digital Thermostatic Control with LED display (+/- 1 degree accuracy)
- Durable Copper Immersion two heating elements, field serviceable
- Simple Installation – Side 1/2" compression water connections with 1/2" NPT adapters included



RTEX-18

Unique Features:

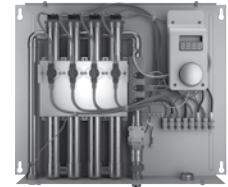
- External Digital Thermostatic Control with LED display (+/- 1 degree accuracy)
- Most advanced self-modulation, adjust power to meet hot water demand
- Durable Copper Immersion two heating elements, field serviceable
- Simple Installation – Bottom 3/4" NPT water connections



RTEX-24, RTEX-27

Unique Features:

- External Digital Thermostatic Control with LED display (+/- 1 degree accuracy)
- Most advanced self-modulation, adjust power to meet hot water demand
- Durable Copper Immersion three heating elements, field serviceable
- Simple Installation – Bottom 3/4" NPT water connections



RTEX-36

Unique Features:

- External Digital Thermostatic Control with LED display (+/- 1 degree accuracy)
- Most advanced self-modulation, adjust power to meet hot water demand
- Durable Copper Immersion four heating elements, field serviceable
- Simple Installation – Bottom 3/4" NPT water connections



INTEGRATED HOME COMFORT

Rheem.com



The new degree of comfort.



Specifications

DESCRIPTION	FEATURES							ROUGHING IN DIMENSIONS (SHOWN IN INCHES)					
	MODEL NUMBER	KW	AMPS	RECOMMENDED BREAKER SIZE	VOLTAGE	RECOMMENDED WIRE SIZE (CU)	MIN. FLOW (GPM)	MAX. FLOW (GPM)	HEIGHT	WIDTH	DEPTH	WATER CONN.	SHIP WEIGHT (LBS.)
120V 1 HEATING CHAMBER													
RTEX-04	3.5	29A	(1x30)A	120	10 AWG	0.3	1.5	5-7/8	10-7/8	2-3/4	1/2 NPT	4.5	
240V* 1 HEATING CHAMBER													
RTEX-06	6.0	25A	(1x25)A	220	10 AWG	0.3	2.0	5-7/8	10-7/8	2-3/4	1/2 NPT	4.5	
RTEX-08*	7.3	33A	(1x40)A	240	8 AWG	0.3	4.8	12-5/8	8-1/4	3-5/8	1/2 CF	7	
RTEX-11*	11.8	46A	(1x50)A	240	6 AWG	0.3	4.8	12-5/8	8-1/4	3-5/8	1/2 CF	8.5	
RTEX-13*	13.0	54A	(1x60)A	240	6 AWG	0.3	4.8	12-5/8	8-1/4	3-5/8	1/2 CF	8.5	
240V* 2 HEATING CHAMBERS													
RTEX-18*	18.0	75A	(2x40)A	240	8 AWG	0.3	7.0	18-1/4	14-1/2	3-1/2	3/4 NPT	14.78	
240V* 3 HEATING CHAMBERS													
RTEX-24*	24.0	100A	(3x40)A	240	8 AWG	0.3	7.0	18-1/4	17-5/8	3-1/2	3/4 NPT	17.8	
RTEX-27*	27.0	113A	(3x40)A	240	8 AWG	0.3	7.0	18-1/4	17-5/8	3-1/2	3/4 NPT	17.8	
240V* 4 HEATING CHAMBERS													
RTEX-36*	36.0	150A	(4x40)A	240	8 AWG	0.3	8.0	18-1/4	21-5/8	3-1/2	3/4 NPT	22.7	

*240V units can be used on 208V single phase with 25% reduced temperature output. Please note per UL standards the rating plate and installation instructions will all be according to a 240V applied voltage. Check with local officials prior to derating the electrical infrastructure.

Product Specifications (all models)	Rated Pressure	25 PSI min., 150 PSI max.
	Certifications	ETL Listed to UL 499 and CSA
	Std. Temp. Settings	120°F (Adjustable 80°F-140°F)
	Temp. Accuracy	+/-1° at steady flow
	Turn-On	0.3 GPM

Suggested Specifications

Unit shall have copper clad immersion heating element(s) with brass terminations for increased durability. External temperature control and display adjustable in 1° increments with a range of 80°-140°F. Display shall be capable of displaying setpoint temperature in Celsius or Fahrenheit temperature scales. Unit shall utilize a flow meter with a 0.3 gpm activation point and manage power based on actual flow rate and inlet temperature. Values should be processed 60 times per second. Unit shall be WQA certified lead free, certified to UL499 and CSA C22.2 No.64.

Optional Inline Flow Regulator

- Enhanced outlet temperature control
- Install on the outlet side of the heater
- Limit maximum volume to the specified flow rate to ensure exiting temperature is within an acceptable range
- Flow Regulators for 1/2" and 3/4" NPT plumbing connections
- Flow range: 1 to 5 gallons per minute

RHEEM PART NUMBER	GPM RATING OF INSERTS PROVIDED	CONNECTION SIZE
RTE10001A	1.0, 1.5, 2.0	1/2" NPT
RTE10001B	2.0, 3.0, 4.0, 5.0	3/4" NPT

Suggested Sizing Guide

MODEL NUMBER	FLOW REGULATOR PART NO.	GPM INSERT TO USE BASED ON INLET WATER TEMPERATURE			
		40°F	50°F	60°F	70°F
RTEX-04	N/A	N/A	N/A	N/A	N/A
RTEX-06	N/A	N/A	N/A	N/A	N/A
RTEX-08	RTE10001A	1.0	1.0	1.0	1.5
RTEX-11	RTE10001A	1.0	1.0	1.5	2.0
RTEX-13	RTE10001A	1.0	1.0	1.5	2.0
RTEX-18	RTE10001B	2.0	2.0	2.0	3.0
RTEX-24	RTE10001B	2.0	2.0	3.0	4.0
RTEX-27	RTE10001B	2.0	3.0	4.0	5.0
RTEX-36	RTE10001B	3.0	4.0	5.0	5.0

In keeping with its policy of continuous progress and product improvement, Rheem reserves the right to make changes without notice.

Rheem.com | 800.374.8806
Manufacturers National Service Department
400 Captain Neville Drive, Waterbury, CT 06705

