

ProAdvantage Series

Specifications

Electric Tankless Hot Water Heater

Digital Microprocessing Temperature Control for Commercial and Industrial Applications

Performance Features

- Cut Energy Waste. Flow switch activates heater only on demand (no standby heat loss) 99% efficient
- Save Water – “Point of Use”
- Continuous Hot Water. No storage capacity to run out
- Easy Installation. Only one cold or hot water line is needed for installation – 3/4” NPT water fittings (except single module units use 1/2” compression fittings)
- Reduces calcification, liming and sedimentation
- External digital temp control
- Reduces installation cost and material. No T&P relief valve needed (check local codes) or venting
- Warranty – Heaters are guaranteed against failure due to leaks of “Heater Body/Element Assembly” for a period of five (5) years and one (1) year on parts – Field serviceable replaceable cartridge element, one (1) year
- Aluminum powder coated exterior

Special Design Service

Inquiries for units for unique applications are welcome. Call our Technical Service department at **1-800-543-6163**.

Suggested Specification

Water heater shall be an Eemax ProAdvantage model number PA_____

Tankless Water Heater shall be an Eemax ProAdvantage model, with digital microprocessing temperature control capable of maintaining outlet temperature. Element shall be replaceable cartridge insert. Unit shall have replaceable filter in the inlet connector. Element shall Nickel Chrome material. Maximum operating pressure of 150 PSI. Hot water storage tanks prohibited. Unit shall be Eemax or approved equal.



Single Module



Dual Module



Triple Module



NO LEAD

The wetted surface of this product contacted by water contains less than 0.25% lead and meets ANSI/NSF 372



ProAdvantage Series

Digital Microprocessing Temperature Control for Commercial and Industrial Applications

Specifications

Electric Tankless Hot Water Heater

Product Specifications

Single Module Models

PA004120T, PA008208T, PA005240T, PA007240T, PA010240T, PA012240T, PA008277T, PA010277T

Dimensions: 9.875" H x 5.3" W x 4" D

Weight: 4.5 lbs.

Cover: Aluminum Powder Coated

Rated Pressure: 25 PSI min. 150 PSI max.

Element: Single replaceable heating cartridge insert

Fittings: 1/2" compression

Temp Control: Digital touchpad LED, range 100°F-140°

Dual Module Models

PA014240TC, PA016277TC, PA019240TC, PA020288TC, PA023240TC

Dimensions: 10.5" H x 11" W x 4.5" D

Weight: 10.5 lbs.

Cover: Aluminum Powder Coated

Rated Pressure: 25 PSI min. 150 PSI max.

Element: Dual replaceable heating cartridge insert

Fittings: 3/4" NPT

Temp Control: Digital touchpad LED, range 100°F-140°F

Triple Module Models

PA018208T2T, PA024208T2T, PA018277T2T, PA024277T2T, PA032277T2T,

SINGLE PHASE MODEL PA028240T2T

Dimensions: 12.5" H x 15.5" W x 4.5" D

Weight: 15 lbs.

Cover: Aluminum Powder Coated

Rated Pressure: 45 PSI min. 150 PSI max.

Element: Triple replaceable heating cartridge insert

Fittings: 3/4" NPT

Temp Control: Digital touchpad LED, range 100°F-140°F

MODEL NUMBER	KW	AMPS	RECOMMENDED WIRE SIZE (CU)	MIN. FLOW (GPM)	MAX. FLOW (GPM)	TEMPERATURE RISE °F						
						0.5 GPM	0.75 GPM	1.0 GPM	1.5 GPM	2.0 GPM	2.5 GPM	3.0 GPM
SINGLE PHASE 120V – Approximate Weight 4.5 lbs.												
C PA004120T	3.5	29A	10 AWG	0.3	2.5	48°	32°	24°	16°	16°	–	–
SINGLE PHASE 208V – Approximate Weight 4.5 lbs.												
C PA008208T	8.3	40A	8 AWG	0.7	2.5	–	68°	51°	41°	34°	–	–
SINGLE PHASE 240V* – Approximate Weight 4.5 lbs.												
C PA005240T	4.8	20A	10 AWG	0.5	2.5	66°	44°	33°	2°	6°	–	–
C PA005240T (derated 208V performance)	3.6	17A	*	0.5	2.5	49°	33°	25°	16°	–	–	–
C PA007240T	6.5	27A	10 AWG	0.7	2.5	–	59°	45°	30°	22°	–	–
C PA007240T (derated 208V performance)	4.9	24A	*	0.7	2.5	66°	44°	33°	22°	–	–	–
C PA010240T	9.5	40A	8 AWG	0.7	2.5	–	87°	65°	43°	33°	–	–
C PA010240T (derated 208V performance)	7	34A	*	0.7	2.5	–	95°	64°	48°	32°	–	–
C PA012240T	11.5	48A	6 AWG	0.7	2.5	–	+	79°	53°	39°	–	–
C PA012240T (derated 208V performance)	8.7	42A	*	0.7	2.5	–	+	79°	59°	39°	–	–
SINGLE PHASE 240V* – Approximate Weight 10.5 lbs.												
C PA014240TC	15	64(2x32)A	8 AWG	0.7	3.0	–	+	+	68°	51°	41°	34°
C PA014240TC (derated 208V performance)	11.2	52(2x27)A	*	0.7	3.0	–	+	77°	51°	38°	31°	26°
C PA019240TC	19	80(2x40)A	8 AWG	0.7	3.0	–	+	+	86°	65°	52°	43°
C PA019240TC (derated 208V performance)	14	68(2x34)A	*	0.7	3.0	–	+	95	64	48	38°	32°
C PA023240TC	23	96(2x48)A	6 AWG	0.7	3.0	–	+	+	+	79°	63°	53°
C PA023240TC (derated 208V performance)	17.3	83(2x42)A	*	0.7	3.0	–	+	+	79°	59°	47°	39°
SINGLE PHASE 240V* – Approximate Weight 15 lbs.												
C PA028240T2T	28.5	120(3x40)A	6 AWG	0.7	4.0	–	+	+	+	+	77°	64°
C PA028240T2T (derated 208V performance)	20.9	100(3x33)A	*	0.7	4.0	–	+	+	+	+	57°	48°
SINGLE PHASE 277V – Approximate Weight 4.5 lbs.												
C PA008277T	8	29A	10 AWG	0.7	2.5	–	73°	55°	37°	27°	–	–
C PA010277T	10	36A	10 AWG	0.7	2.5	–	+	69°	46°	34°	–	–
SINGLE PHASE 277V – Approximate Weight 10.5 lbs.												
C PA016277TC	16	58(2x29)A	10 AWG	0.7	3.0	–	+	+	74°	55°	44°	37°
C PA020277TC	20	72(2x36)A	6 AWG	0.7	3.0	–	+	+	+	69°	55°	46°
THREE PHASE 208V/3 Ø* – Approximate Weight 15 lbs.												
C PA018208T2T	18	50A/phase	6 AWG	0.7	4.0	–	+	+	82°	62°	49°	41°
C PA024208T2T	24	67A/phase	6 AWG	0.7	4.0	–	+	+	+	82°	66°	55°
THREE PHASE 480V/277V** – Approximate Weight 15 lbs.												
C PA018277T2T	18	22A/phase	10 AWG	0.7	4.0	–	+	+	82°	62°	49°	41°
C PA024277T2T	24	29A/phase	10 AWG	0.7	4.0	–	+	+	+	82°	66°	55°
C PA032277T2T	32	39A/phase	6 AWG	0.7	4.0	–	+	+	+	+	88°	73°

* 240V units can be used on 208V single phase with 25% reduced temperature output. Please note per UL standards the rating plate and installation instructions will all be according to a 240V applied voltage. Check with local officials prior to derating the electrical infrastructure.

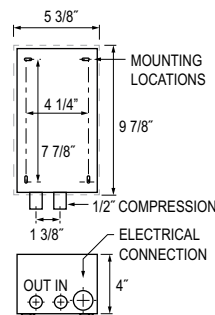
† Delta – No Neutral Leg

** Wye – Neutral Leg Required

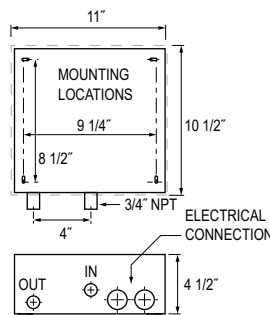
+ Temperature electrically limited to factory preset not-to-exceed temperature.

C Indicates evaluation and compliance to either Underwriters Laboratories (UL) or Intertek (ETL) under CAN/CSA-C22.2 No. 64/No.88.

Single Module



Dual Module



Triple Module

