

Photocontrol - NightFox™ Specifier Grade Locking Type Electronic Photocontrol, 120-277 V

Item LED4536SC



PRODUCT DESCRIPTION

Photocontrol specifically designed for 20-year service to match the life expectancy of long-life LED and new induction fixtures.

FEATURES

- ▶ Non-drift silicon light sensor with IR filter
- ▶ DC relay with zero-crossing circuitry for extended life
- ▶ All components meet 20-year life expectancy
- ▶ Conformal coated PCB
- ▶ Exceeds 15,000 ON/OFF switching cycles
- ▶ Ideal for single or multi-fixture HID and LED installations (up to 2,220 W @ 277 VAC)
- ▶ 510 J MOV surge protection

APPLICATIONS

- ▶ Outdoor Lighting Control

TECHNICAL DATA

General	
Model Number	LED4536SC
Description	NightFox™ Specifier Grade Locking Type Electronic Photocontrol, 120-277 V
UPC Code	078275143647
Brand	Intermatic
Country of Origin (Intermatic)	MEXICO
Warranty Period	12-Year limited
Usage Environments	Outdoor
Photocontrol Type	Electronic
Expected Lifetime (Years)	20
Expected Lifetime (Operations)	15000
Application Compatibilities	LED; Incandescent; HID
Photocontrol Style	Locking type
Photocontrol Sensor Location	Side

Control Specifications	
Sensor Time Delay	Instant ON; 2 sec to 5 sec OFF
Photocell Type	Silicon Diode
Photo Control Switch Type	Relay
Fail Mode	ON
Activation On	1.5 fc
Activation Off	2.25 fc

Dimensions	
Product Height (in)	2 3/4
Product Height (mm)	69.9
Product Diameter (in)	3.375
Product Diameter (mm)	85.8

Material Specifications

Cover Color	White with Blue Band
Housing Material	Polypropylene

Load Ratings

Magnetic Ballast Range(s)	1800 VA
Tungsten Range(s)	1000 W
Electronic Ballast Load Ratings Ranges	8 A, 120-277 VAC, 50/60 Hz

Electrical Specifications

Input Voltage Range(s)	120-277 VAC, 50/60 Hz
Surge Protection Technology	510 J MOV

Packaging

Shipping Weight (lbs)	0.25
Unit Carton Dimensions (H x W x D) in	3.375 x 3.375 x 3.062 in

Environmental Specifications

Temperature (operation)	-40°C..70°C
-------------------------	-------------

Standards and Certifications

UL Certification	cULus
Other Certifications and Compatibilities	Title 20; Ansi C136.10
California Proposition 65	None
PDF Standards And Certifications	cULus; Title 20
Epi Certifications	cULus; Title 20

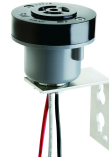
ACCESSORIES



K121
Locking Type Receptacle, 3-Pin, C136.10
Compliant, 9" lead



K121-30
Locking Type Receptacle, 3-Pin, C136.10
Compliant, 30" lead



K122
Locking Type Receptacle, 3-Pin, C136.10
Compliant, with Pole Mounting Bracket



K171H
Locking Type Receptacle, 7-Pin, C136.41
Compliant, 12" lead



KPT1170-010
PowerTap Receptacle, 7-Pin, C136.41
Compliant, Dusk-to-Dawn, 10' cable



KPT0170-010
PowerTap Receptacle, 7-Pin, C136.41
Compliant, Always-On, 10' cable



SK4500K
Shorting Plug for Locking Type Receptacles



KPT0170-015
PowerTap Receptacle, 7-Pin, C136.41
Compliant, Always-On, 15' cable