

## Photocontrol - NightFox™ Select Grade Locking Type Electronic Photocontrol, 347/480 V

Item EK4537



### PRODUCT DESCRIPTION

Designed to meet a 15-year service life, this photocontrol is LED-compatible and backed by an 8-year warranty.

### FEATURES

- ▶ Non-drift silicon light sensor with IR filter
- ▶ DC relay with zero-crossing circuitry for extended life
- ▶ All components meet 15-year life expectancy
- ▶ Conformal coated PCB
- ▶ Exceeds 10,000 ON/OFF switching cycles
- ▶ Ideal for single or multifixture HID and LED installations (up to 1,650 W @ 277 VAC)
- ▶ 510 J MOV surge protection

### APPLICATIONS

- ▶ Outdoor Lighting Control

### TECHNICAL DATA

General	
Model Number	EK4537
Description	NightFox™ Select Grade Locking Type Electronic Photocontrol, 347/480 V
UPC Code	078275148970
Brand	Intermatic
Country of Origin (Intermatic)	MEXICO
Warranty Period	8-Year limited
Usage Environments	Outdoor
Photocontrol Type	Electronic
Expected Lifetime (Years)	15
Expected Lifetime (Operations)	10000
Application Compatibilities	LED; Incandescent; HID
Photocontrol Style	Locking type
Photocontrol Sensor Location	Side

Control Specifications	
Sensor Time Delay	Instant ON; 2 sec to 5 sec OFF
Photocell Type	Silicon Diode
Photo Control Switch Type	Relay
Fail Mode	ON
Activation On	1.5 fc
Activation Off	2.25 fc

Dimensions	
Product Height (in)	2 3/4
Product Height (mm)	69.9
Product Diameter (in)	3.375
Product Diameter (mm)	85.8

**Material Specifications**

Cover Color	White with Yellow Band
Housing Material	Polypropylene

**Load Ratings**

Magnetic Ballast Range(s)	1800 VA
Tungsten Range(s)	1000 W
Electronic Ballast Load Ratings Ranges	6 A, 347/480 VAC, 50/60 Hz

**Electrical Specifications**

Input Voltage Range(s)	347/480 VAC, 50/60 Hz
Surge Protection Technology	685 J MOV

**Packaging**

Shipping Weight (lbs)	0.35
Unit Carton Dimensions (H x W x D) in	3.375 x 3.375 x 3.062 in

**Environmental Specifications**

Temperature (operation)	-40°C..70°C
-------------------------	-------------

**Standards and Certifications**

UL Certification	cULus
Other Certifications and Compatibilities	Title 20; Ansi C136.10
California Proposition 65	DEHP
PDF Standards And Certifications	cULus; Title 20
Epi Certifications	cULus; Title 20

---

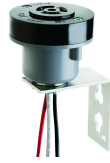
## ACCESSORIES



**K121**  
Locking Type Receptacle, 3-Pin, C136.10  
Compliant, 9" lead



**K121-30**  
Locking Type Receptacle, 3-Pin, C136.10  
Compliant, 30" lead



**K122**  
Locking Type Receptacle, 3-Pin, C136.10  
Compliant, with Pole Mounting Bracket



**K171H**  
Locking Type Receptacle, 7-Pin, C136.41  
Compliant, 12" lead



**KPT0170-010**  
PowerTap Receptacle, 7-Pin, C136.41  
Compliant, Always-On, 10' cable



**KPT1170-010**  
PowerTap Receptacle, 7-Pin, C136.41  
Compliant, Dusk-to-Dawn, 10' cable



**SK4500K**  
Shorting Plug for Locking Type Receptacles



**KPT0170-015**  
PowerTap Receptacle, 7-Pin, C136.41  
Compliant, Always-On, 15' cable