

GREENWALLS USAGE GUIDE



VICINITY

BEAUTIFUL SPACES



INDEX

- Commercial Projects**
- Residential Projects**
- Hotels and Restaurants**
- Events and Exhibitions**
- Farming and Fresh Food**
- Vertical Farming**
- Home Veggie Walls**
- Get in touch**



Impactful,
beautiful
and serene.

Greenwalls create a calm atmosphere, while contributing to the overall health and balance of an environment. Greenwalls are growing in popularity and it's not hard to see why:

- It's more space efficient than pot plants
- It's a design feature with visual impact
- Eco-friendly and a symbol of green thinking
- It releases oxygen and absorbs harmful toxins
- The stress-reducing effect of the Greenwall creates staff wellness
- The Greenwall improves acoustics

COMMERCIAL PROJECTS



Bidvest



Total Oil



Rohlig Grindrod



Lemon Décor



Slow Lounge

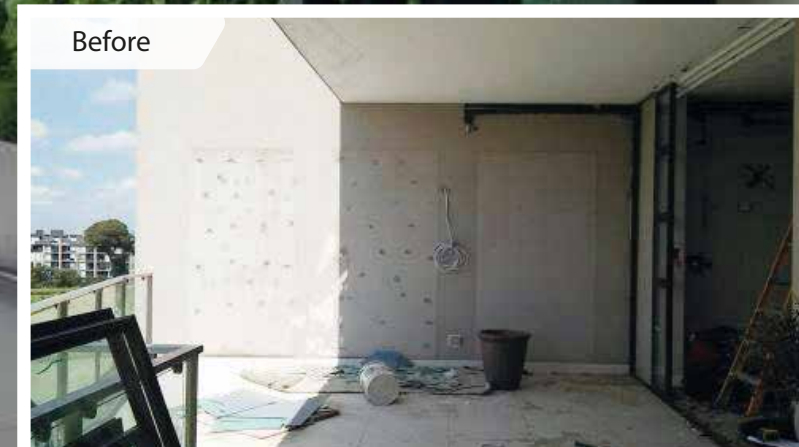


RESIDENTIAL PROJECTS

Whether your space is limited or not, Vicinity Greenwalls are a great solution for creating a feature wall at home.

Floor space is expensive,
making Greenwalls
ideal for apartment living.

You can have a 6m² garden on your wall using
only a 1/3m² of floor space.



HOTELS AND RESTAURANTS

Give your space a high-end facelift.

Our Greenwalls are space efficient and beautiful.





EVENTS & EXHIBITIONS



Get an instant green effect with Vicinity Greenwalls.

Temporary greenwalls are simple to setup and breakdown. Fully planted pots are easily transported and clipped onto the rails on site. No watering required for 3-4 days.



FARMING AND FRESH FOOD



VERTICAL FARMING

Vertical farming allows food to be grown in congested cities, close to consumers. This allows farmers to supply directly to restaurants and other outlets.

Greenwalls are ideal for urban farming with up to 80 plants per m².



HOME VEGGIE WALLS



Grow your own food.

With the Vicinity modular system it is possible to customise the size of your veggie wall.

- Fresh, organic, home-grown veggies without chemicals and pesticides
- Higher nutrients
- Eat fresh food as you cut it
- Water efficient
- Do your farming while standing up
- Keep pets out of your veggies



GET IN TOUCH

vicinity.za.com



VICINITY