

Fast-Trac TracSpec™ Template Instructions

This template is for 120” length track with 42 windows and 168 studs. Air Lite Single and Double Backers or Air Lite XL Single and XL Double Backers

VERIFY YOU HAVE THE CORRECT TEMPLATE, IF YOU ARE UNSURE, USE THE APPLICATION FINDER TO DETERMINE YOUR TRACK.

Note: This template is designed for your track, not your snowmobile. MAKE SURE THERE IS NO OBSTRUCTIONS WHERE THE STUDS ARE TO BE LOCATED!

Always verify your track has enough clearance for studs between the track, tunnel and heat. Make sure proper protection is installed in case of a suspension bottoming.

YOUR SNOWMOBILE MUST HAVE TUNNEL PROTECTION TO USE STUDS. Please contact us if you have questions or need help locating them.

Do not run studs longer than recommended.

Verify track is in good condition. Do not install studs in damaged or worn tracks.

Template Instructions

Tools Needed For Template:

Scissors

Hole Punch

White Paint Marker or Metallic Marker

This template will repeat 2 full times, use lines 7-12 on last 6 rows.

1. Printing: Make sure scale is 100% and that scale to fit is not checked. Once printed, measure the top bar to verify it is 7.75”
2. Place backers on printed template to verify spacing is correct
3. Cut the solid lines with scissor icons
4. Use a hole punch to punch out grey shaded portion of the hole.
5. The template starts at 1 and each row moves toward the front of the snowmobile.

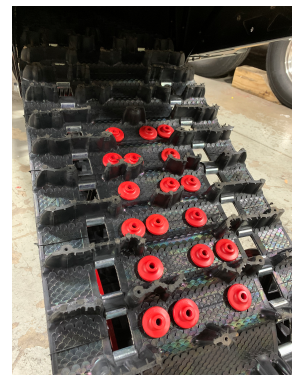


6. Use Marker to mark spot on track to drill



7. On the rows that state “mark outside window” mark directly in the center of outside window

8. After the track is marked place backers on markings to verify the spacing is correct and double check they will not hit tunnel protectors or other objects in tunnel.



MAKE SURE THIS MEASURES 7.75"

*IF IT DOES NOT MEASURE 7.75", REFER TO INSTRUCTIONS FOR TROUBLESHOOTING

FAST-TRAC
Snowmobile Traction Products

X

FAST-TRAC
Snowmobile Traction Products

X

FAST-TRAC
Snowmobile Traction Products

X

FAST-TRAC
Snowmobile Traction Products

X

FAST-TRAC
Snowmobile Traction Products

16



Mark Outside Window

Mark Outside Window

Cut all solid lines with ✂ icon

MAKE SURE THIS MEASURES 7.75"

*IF IT DOES NOT MEASURE 7.75", REFER TO INSTRUCTIONS FOR TROUBLESHOOTING

FAST-TRAC
Snowmobile Traction Products

15

FAST-TRAC
Snowmobile Traction Products

14

Mark Outside Window Mark Outside Window

FAST-TRAC
Snowmobile Traction Products

13

FAST-TRAC
Snowmobile Traction Products

12

Mark Outside Window Mark Outside Window

FAST-TRAC
Snowmobile Traction Products

11

Cut all solid lines with ✂ icon

MAKE SURE THIS MEASURES 7.75"

*IF IT DOES NOT MEASURE 7.75", REFER TO INSTRUCTIONS FOR TROUBLESHOOTING

FAST-TRAC
Snowmobile Traction Products

10



Mark Outside Window

Mark Outside Window

FAST-TRAC
Snowmobile Traction Products

9



Mark Outside Window

Mark Outside Window

FAST-TRAC
Snowmobile Traction Products

8



Mark Outside Window

Mark Outside Window

FAST-TRAC
Snowmobile Traction Products

7



Mark Outside Window

Mark Outside Window

FAST-TRAC
Snowmobile Traction Products

6



Cut all solid lines with  icon

MAKE SURE THIS MEASURES 7.75"

*IF IT DOES NOT MEASURE 7.75", REFER TO INSTRUCTIONS FOR TROUBLESHOOTING

FAST-TRAC
Snowmobile Traction Products

5

FAST-TRAC
Snowmobile Traction Products

4

Mark Outside Window

Mark Outside Window

FAST-TRAC
Snowmobile Traction Products

3

FAST-TRAC
Snowmobile Traction Products

2

Mark Outside Window

Mark Outside Window

FAST-TRAC
Snowmobile Traction Products

1

Cut all solid lines with ✂ icon