

## OEM Backup Camera Installation Guide

for 2007-2015 Volkswagen Tiguan, 2011+ Jetta, 2010+ Sportwagen, 2012+ Passat

### Tools Required:

- RNS510, RNS315 or RCD510 (Only F or H Revision RCD510)
- Mini Add-a-fuse
- Various standard tools (Torx bits, screwdriver, soft pry tool, etc)
- OEM Trunk handle camera wiring harness
- Vagcom/VCDS to program your stereo
- Tap splice for 18-22 guage wire
- Electrical tape

### Before Beginning:

Ensure your trunk is open. Disconnect the negative Terminal of your battery.

**Note: Instructions will vary slightly between models. A 2012 Jetta sedan is used in this guide for demonstration purposes.**

### 01- Removing the the trunk lid covering

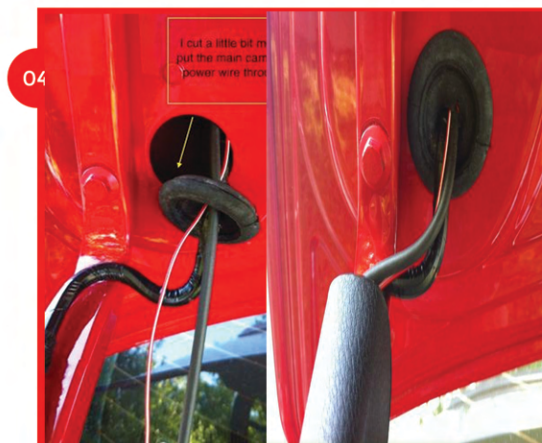
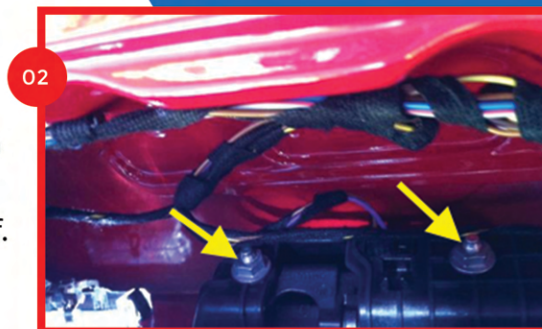
Inside the handles on the lid, you will see 1 torx screw on each side (pictured). Remove them and set aside. The rest of the inner trunklid is held by standard clips which can be pulled off.

### 02- Removing old handle:

- Disconnect the cable that powers the handle.
- Unscrew and remove the 2 bolts holding the handle cover in place. Next thing your going to want to do from the out side of the lid is completely remove your license plate and backing. Then, using a pry tool, pry the handle out. There is one small clip on each side.

03- Installation of the new handle is the opposite of removal. Ensure you pull the wires through the cover you removed. Bolt up the handle and reconnect the trunk release cable.

04- Follow the power and main camera line wires around through the trunk lid grommet. You may have to use a tool to make more room for the wires in the grommet.





## OEM Backup Camera Installation Guide

for 2007-2015 Volkswagen Tiguan, 2011+ Jetta, 2010+ Sportwagen, 2012+ Passat

05- Feed the camera's wiring through the trunk covering trim panels(find an easy, clean route) and pull them through to the rear drivers side panel. (Gently pry apart panels to remove them). Route the wiring to the front of the vehicle.



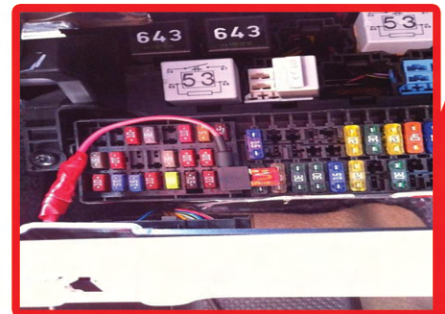
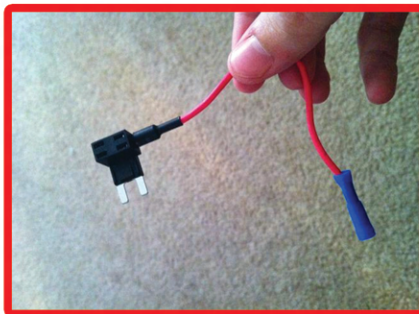
06- Back at the trunk, attach the negative lead wire attach it to a bolt for ground. In this photo, the trunk hinge bolt is used for a solid ground connection.



07- Use a wire tap to tap the yellow wire from the camera's wiring harness to the blue wire in the taillight harness shown. An example of a wiring tap is shown below.



08-Connect the camera's power wire to your 10amp mini add-a-fuse (pictured). Locate an applicable fuse (Fuse 24 used in this example) Remove fuse plug it into your add-a-fuse and connect the add a fuse to fuse panel.



## OEM Backup Camera Installation Guide

for 07-15 Volkswagen Tiguan, 11-15 Jetta, 10-14 Sport-  
wagen, 12-15 Passat

09- Connect the 26 pin harness into the rear of your RNS510/RNS315, RCD510 H/F Revision. Use our Radio removal/installation guides to learn how to remove the stereo from your vehicle.

10- Hide all wiring and re-install all removed trim panels.

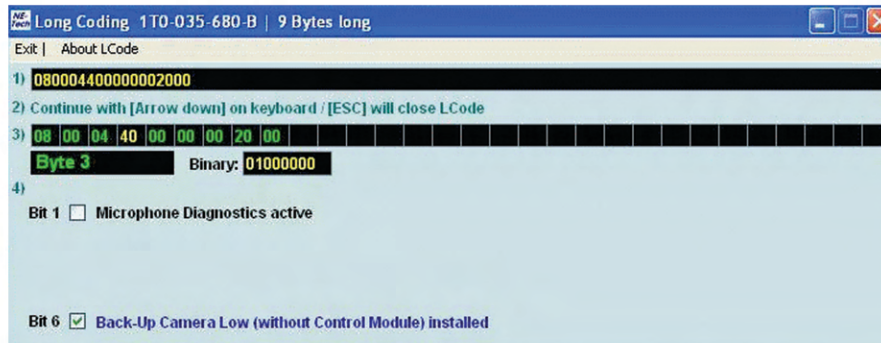
11- Using VCDS, re-code your radio to enable rear view camera activation upon entering reverse gear. Depending on which unit you are using, the VCDS steps will differ slightly.

Enter 36-Navigation or 56-Radio in VCDS

-Go into Long Coding Editor/Helper

-Scroll into each byte, and look for this option or similar. Check the checkbox to enable the feature.

-Exit the long coding helper and ensure changes are saved. For the RNS510, you will need to reset your device to activate your changes.



Your install is complete! Enjoy your OEM Volkswagen Rear View Camera!



# Reverse Camera Wiring Diagram

(4. 26 pin Camera Cable)

**Fuse  
Box**

**Radio**

## Quick Diagram Instructions

1. power wire coming from camera to fuse box, fuse 24 with mini-add-fuse

2. Ground wire from camera to bolt under trunk hinge cover

3. Reverse tap from camera to blue wire from taillight using a 18-22 tap splice (pictured)

4. Camera cable from back of radio to RVC camera

(1. Power Wire +)

(3. Reverse Tap)

(2. Ground -)

**Camera**

