

## OEM Lowline Emblem RVC Installation Guide

for 2006-2015 VW Golf/GTI/Golf R, EOS, CC  
2006-2009 VW Passat B6  
2012-2015 VW Beetle

**Tools Required:**

- RNS510, RNS315 or RCD510 (Only F or H Revision RCD510)
- OEM Trunk handle camera OEM wiring harness
- Tap splice for 18-22 guage wire
- Electrical tape
- Mini Add-a-fuse
- Various standard tools (Torx withbits, screwdriver, soft pry tool, etc)
- Vagcom/VCDS to program your stereo

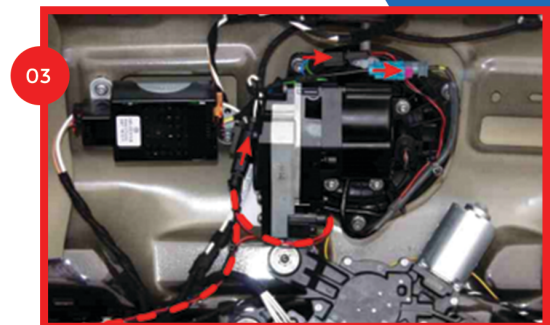
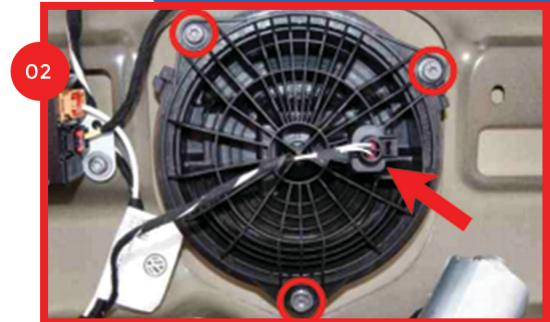
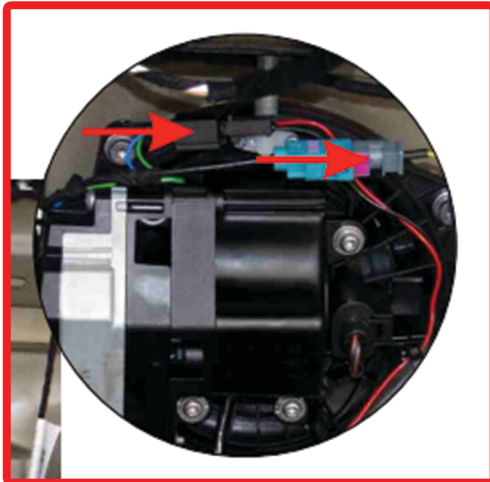
**Before Beginning:**

Ensure your trunk is open. Disconnect the negative Terminal of your battery before beginning. A VW GTI MK6 is used in this guide for demonstration purposes.

01 Remove the inner trunklid trim of your VW to gain access to its original emblem mounted trunklid actuator and wiring.

02- Unplug the connector from the existing badge. Then remove the three screws securing the existing badge to the trunk lid. The existing badge can now be removed.

03- Install the new badge mounted Rear View Camera assembly into the opening, and use the three torx screws to secure it into place. Follow the wiring diagram as shown in photo 03. Closeup is shown below.

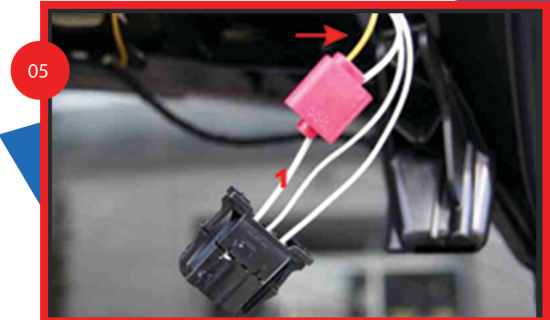


04- Run the power and video signal wiring from the emblem down the trunk's pillar, and through the grommet shown.

For the Beetle, route the elongated trigger wire down this grommet as well.



05- Tap the yellow trigger wire into the reverse lamp's 12V+ wiring using a 18-22awg wire tap



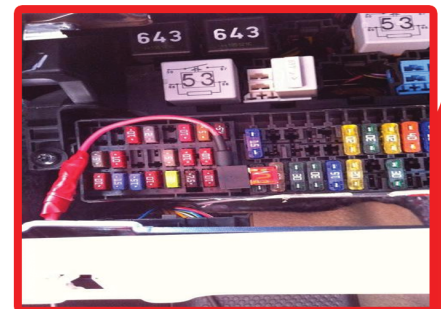
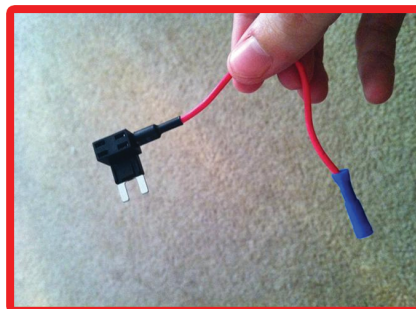
06- Route the 26-pin harness and the power wiring to the front of the vehicle. you will have to tuck these pieces under trim panels, which can be pried off using soft pry tools.



07- Plug the 26 pin harness into the back of the RNS510, RNS315 or RCD510 F/G/H.



08- Connect the camera's power wire to your 10amp mini add-a-fuse (pictured). Locate an applicable fuse (Fuse 24 used in this example) Remove fuse plug it into your add-a-fuse and connect the add a fuse to fuse panel.



09- Connect the 26 pin harness into the rear of your RNS510/RNS315, RCD510 H/F Revision. Use our Radio removal/installation guides to learn how to remove the stereo from your vehicle.

Hide all wiring and re-install all removed trim panels.

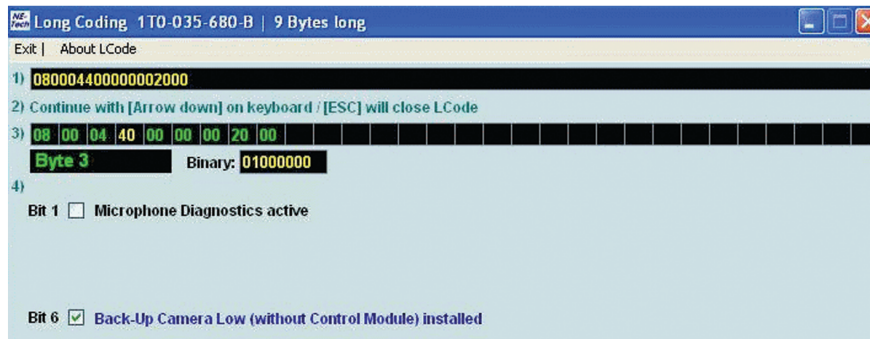
10- Using VCDS, re-code your radio to enable rear view camera activation upon entering reverse gear. Depending on which unit you are using, the VCDS steps will differ slightly.

Enter 36-Navigation or 56-Radio in VCDS

-Go into Long Coding Editor/Helper

-Scroll into each byte, and look for this option or similar. Check the checkbox to enable the feature.

-Exit the long coding helper and ensure changes are saved. For the RNS510, you will need to reset your device to activate your changes by pressing and holding eject+sun/moon+GUIDE or eject+star+GUIDE and waiting for 30 seconds.



Your install is complete! Enjoy your OEM Volkswagen Rear View Camera!