

OEM EOS RVC Installation Guide

for 2007-2015 Volkswagen EOS

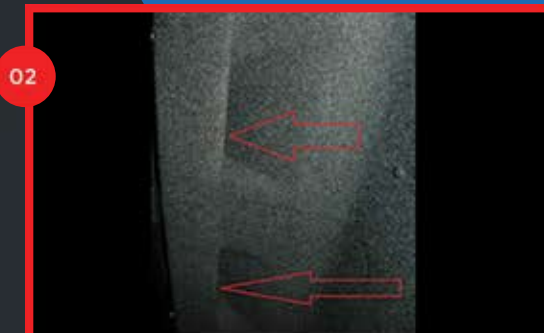
Tools Required:

- RNS510, RNS315 or RCD510
- Mini Add-a-fuse
- (Only F or H Revision RCD510)
- Various standard tools (Torx withbits, screwdriver, soft pry tool, etc)
- OEM Trunk handle camera
- OEM wiring harness
- Tap splice for 18-22 guage wire
- Vagcom/VCDS to program your stereo
- Electrical tape

Before Beginning:

Ensure your trunk is open. Disconnect the negative Terminal of your battery.

01-02 - Unscrew 10 plastic screws under the trunk, plus 2 screws in the door handle of the trunk lid, and then pull out 2 plastic covers on both sides of the lid, and the plastic cover on the trunk lock to remove the trunk mat.



03- Unplug the connector from the existing badge. Then remove the three screws securing the existing badge to the trunk lid. The existing badge can now be removed.

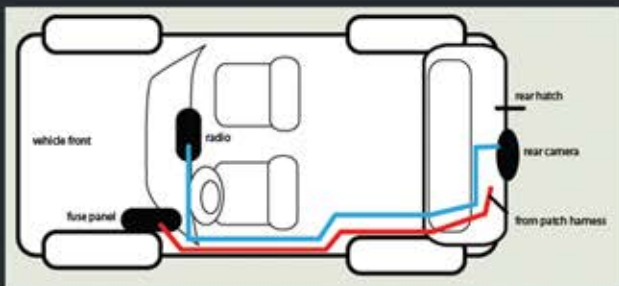
Now install the new badge in the same manner. Do not overtighten screws.



04- Make sure the blue coax cable is connected to the Rear View Camera. Disconnect the backup light harness and plug it into the patch harness. Plug the female end of the patch harness connector to the OEM taillight harness. Plug the 2-pin wiring harness into the conenctor of the parch harness (brown and yellow wires).



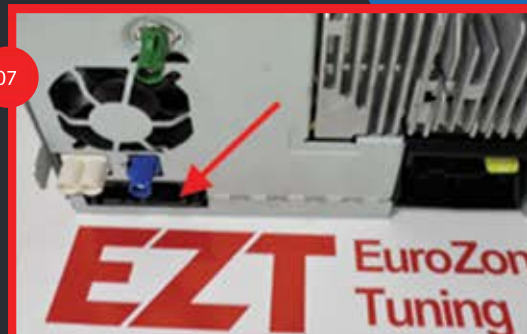
05- Feed the camera's wiring through the trunk covering trim panels (find an easy, clean route) and pull them through to the rear drivers side panel. (Gently pry apart panels to remove them). Route the wiring (power wire and 26-pin connection) to the front of the vehicle.



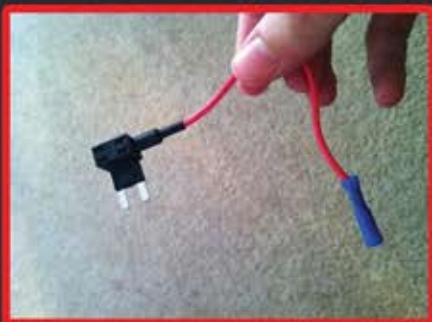
06- Remove the RCD510, RNS510 or RNS315 to gain access to the rear of the unit. This is where you will install the 26-pin harness.



07- Route the 26-pin connection to the rear of the RNS510, RCD510 (H or F), or RNS315. Reinstall the Radio back into its stock location.



08- Connect the camera's power wire to your 10amp mini add-a-fuse (pictured). Locate an applicable fuse (Fuse 24 used in this example) Remove fuse plug it into your add-a-fuse and connect the add a fuse to fuse panel. Alternatively, you could use the included plug and tap into one of the interior fuses through the back of the fusebox.



10- Connect the 26 pin harness into the rear of your RNS510/RNS315, RCD510 H/F Revision. Use our Radio removal/installation guides to learn how to remove the stereo from your vehicle.

Hide all wiring and re-install all removed trim panels.

11- Using VCDS, re-code your radio to enable rear view camera activation upon entering reverse gear. Depending on which unit you are using, the VCDS steps will differ slightly.

Enter 36-Navigation or 56-Radio in VCDS

-Go into Long Coding Editor/Helper

-Scroll into each byte, and look for this option or similar. Check the checkbox to enable the feature.

-Exit the long coding helper and ensure changes are saved. For the RNS510, you will need to reset your device to activate your changes.



Your install is complete! Enjoy your OEM Volkswagen Rear View Camera!