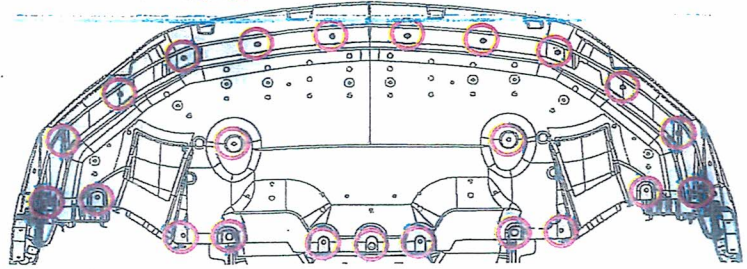


# Handling Package Splitter Installation Instructions

- 1) Raise front of vehicle to access the fastening locations for the Handling Package Splitter and belly pan. Always use an approved floor jack and jack stands or hoist. See Owners Guide for proper jacking instructions.

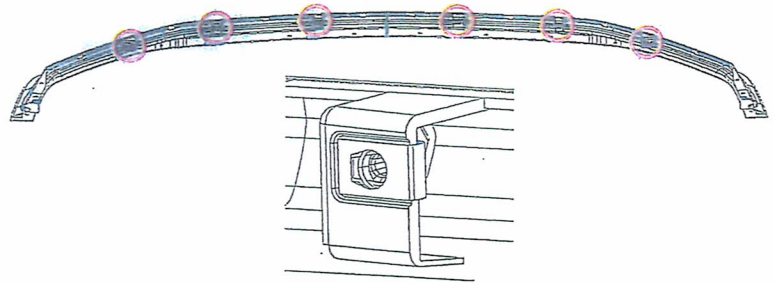
- 2) Remove (22) screws (W715060-S450B) and (3) push pins (W711035-S442) to remove belly pan and set aside.

*\*Note: Screws and push pins will be re-used.*

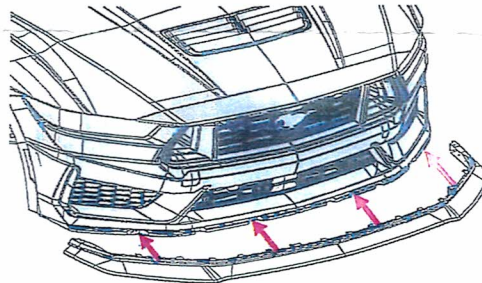


- 3) Install (6) u-nuts (W704823-S439) to Handling Package Upper Splitter (PR3B-17D997-A-PIA-01).

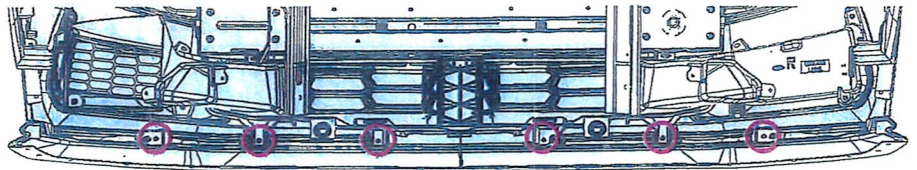
*\*Note: Ensure orientation of u-nuts is correct so flat side of u-nut is facing rearward in vehicle position.*



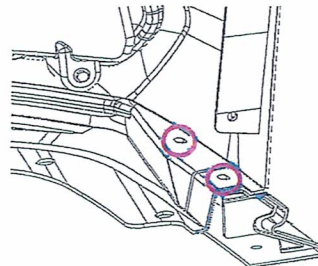
- 4) Attach Handling Package Upper Splitter (PR3B-17D997-A-PIA-01) to front fascia by fully engaging (8) snaps.



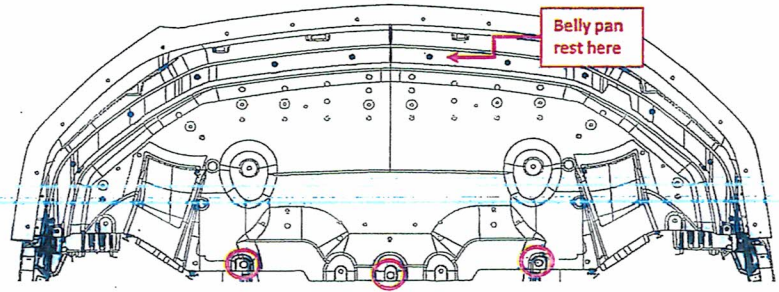
- 5) Install supplied (6) screws (W715060-S450B) to attach the splitter to fascia. Tighten screws securely (reference torque 1.7Nm).



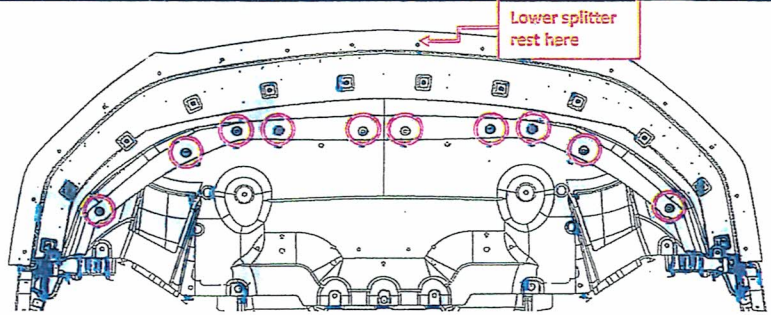
- 6) Install supplied (4) push pins (W705436-S442) to attach the splitter to fascia on outboard ends.



- 7) Partially re-install belly pan by resting forward edge of belly pan on fascia and installing (3) push pins (W711035-S442) to help hold up belly pan.

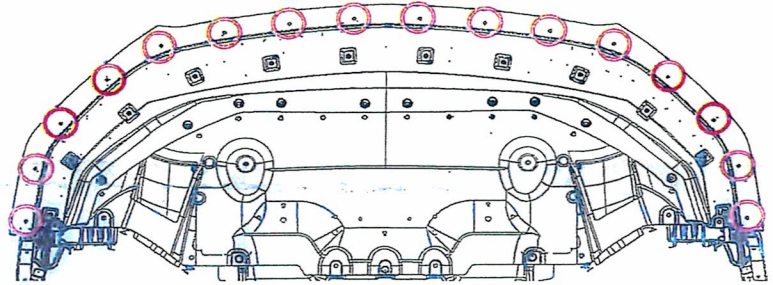


- 8) Install lower splitter (PR3B-17D997-A-PIA-02) by resting forward edge on upper splitter and installing supplied (10) push pins (W713202-S442).



- 9) Fasten supplied (16) screws (W506843-S450B) between lower splitter and upper splitter. (Reference torque 1.7Nm).

*\*Note: Do NOT over-torque screws to avoid screw bosses being stripped out.*



- 10) Fasten remaining belly pan (22) screws (W715060-S450B). (Reference torque 1.7Nm).

