

Carbon Fiber Track Pack Wing Installation Instructions for 2020-2021 Shelby GT500 and 2015-2020 GT350R

Note: This wing will also fit 2015-2021 S550 Mustang decklid (except convertibles) with no mounting holes, included drill guides will be used.



Required Tools:

- 1- Ratchet with 12mm and 10mm socket
- 2- Torx #30
- 3- Fishing string
- 4- Nylon panel removal tools
- 5- Adhesive removal wheel compatible for cordless drill
- 6- 3mm Allen wrench
- 7- 5/16" drill bit
- 8- Low tack masking or painters tape
- 9- Cordless drill
- 10- 1/16" drill bit

If installing wing without existing mounting holes, go to page 4.

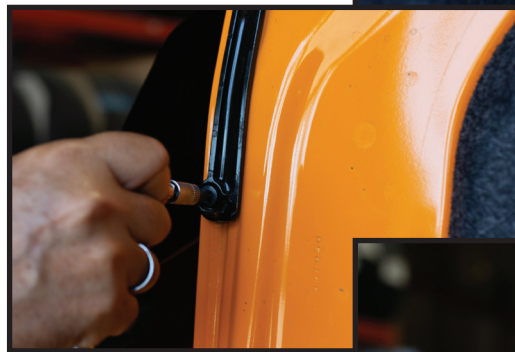
1. Open trunk and remove rubber grommet at both sides of trunklid.



2. Use ratchet and break loose the 12mm nylock nut that is fastened to the threaded stud, but do not remove at this time. Repeat for other side.



3. Remove the Torx bolts that fasten "dog bone" bracket to trunklid and remove bracket. Repeat for other side.



4. Lower the trunklid halfway down and remove the nylock nut with ratchet, the spacer will also fall out through access hole. Repeat on other side.



5. Place low tack tape around bases of rear spoiler.



6. Use fishing string to break mounting seal from each side of base. Repeat for other side.
Note: String will not pass all way through due to mounting stud.



7. Nylon panel removal tools may be used to assist with spoiler removal.



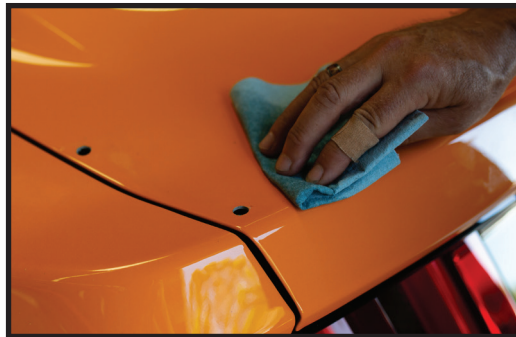
8. Break adhesive seal around base and lift spoiler off decklid. Do not pry with a screwdriver.



9. Clean dirt off mounting area and remove glue with adhesive removal cup wheel and cordless drill. Vary drill speed and do not over heat the painted surface.



10. Wipe the decklid corners with cleaner or rubbing alcohol.



11. Place mounting bracket insulation pads onto wing and lower the assembly onto decklid with mounting stud locations. Lift decklid halfway and insert spacer and nylock nut into access hole. Repeat for other side. Reverse the removal process.



12. Fasten the "dog bone" brackets to each side of trunklid and adjust as needed for best fitment to spoiler.



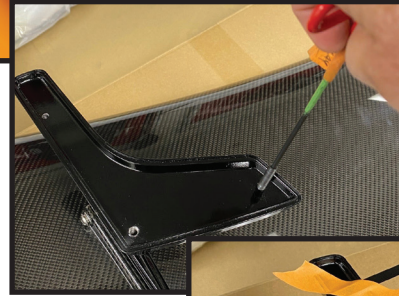
AndersonComposites.com
1-626-333-7024, Monday-Friday 9-5:30 PST

Installation instructions for CFTP wing without existing decklid holes

1. Remove the factory rubber plugs on bottom of the decklid.



2. Use 3mm Allen wrench to remove the location studs on wing mount brackets.



3. Use the included plastic drill guides and insert them into 6 mounting bracket holes. Tape them to the brackets.



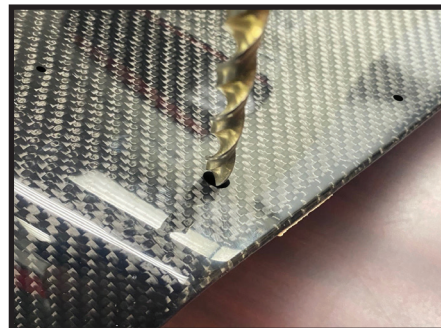
4. Center the wing assembly on the decklid with drill guides fastened. Position wing towards rear of decklid edge. Tip: best match the mounting bracket curvature with decklid surface. Verify left and right side spacing near decklid edges.



5. Tape down drill guides to the decklid. Remove the wing assembly from the drill guides.

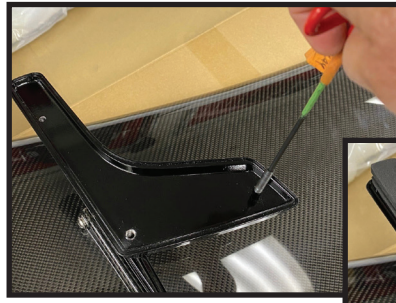


6. Use a cordless drill with 1/16" drill bit and drill six holes into decklid through the plastic drill guides.



7. Remove the plastic drill guides and use a 5/16" drill bit to open up the mounting holes in the decklid.

8. Reinsert the location studs onto the mounting brackets with the 3mm Allen wrench.



9. Install the bracket mounting pads onto the wing and place wing onto decklid. Use 2 pads for each side if needed.

10. Lift the trunklid halfway up and install the spacer and 10mm nylock nut onto the stud. Tighten with a ratchet and 10mm socket. Do not fully tighten the nylock nut at this time. Repeat on other side.



11. Install the "dog bone" brackets using a Torx #30 bit. Do not fully tighten. Repeat for other side.



12. Make final position adjustments for wing assembly on the decklid and fully tighten down both the 10mm nylock nut and Torx fasteners. Tighten each fastener evenly in small increments to get the best results.

13. Reinstall the rubber plugs that cover the 10mm spacers and nylock nuts.



AndersonComposites.com

1-626-333-7024, Monday-Friday 9-5:30 PST

5.

Shelby GT500 CFTP wing install instructions
© 2021 Anderson Composites