

NO PART OF THIS DOCUMENT MAY BE REPRODUCED WITHOUT PRIOR AGREEMENT AND WRITTEN PERMISSION OF ANDERSON COMPOSITES

PLEASE READ ALL OF THE FOLLOWING INSTRUCTIONS CAREFULLY PRIOR TO INSTALLATION.

AT ANY TIME IF YOU DO NOT UNDERSTAND THESE INSTRUCTIONS, PLEASE CALL ANDERSON COMPOSITES TECHLINE AT 626-333-7024.


REQUIRED TOOLS:

(12) Self Tapping Screws, Rivnuts or Rivets,
Phillips Screwdriver, Bit, Drill, Painters Tape,
Sand Paper Block/Paint Stir Stick,
3M Double-Sided Tape or Foam Tape (Recommended)

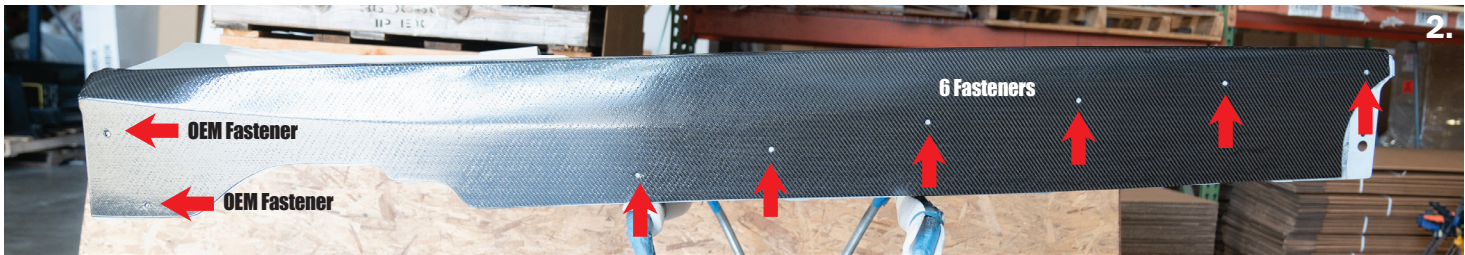

INSTALLATION TIME:

1 Hour

For the best possible fitment, we recommend having an expert install your product(s) – someone who has experience working with carbon fiber. Although some body shops have been in business for many years, they might not have sufficient experience in installing carbon fiber or fiberglass components. Make sure that your installer is familiar with these products.

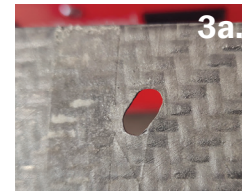
ALL PARTS SHOULD BE PRE-FITTED BEFORE MAKING ANY MODIFICATION, I.E. CUTTING, PAINTING, SANDING, ETC.

1. Test fit the carbon fiber side skirts with car on jack stands or a lift, so you can access the underside of the vehicle. Apply painters tape on lower portion of car where side skirt comes in contact. Align the furthest rear OEM mounting points (arrows, photo 2) of side skirts in factory locations and tighten the factory fasteners, but not beyond finger tight.

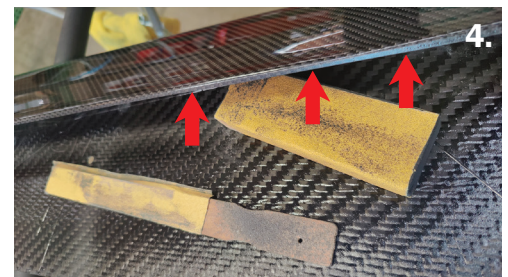


2. There are 2 OEM fasteners that are used towards the rear of the side skirts.

3a/b. OEM holes may need to be elongated. Drill remaining mounting holes using the open holes in the side skirt as a template. The other 6 holes can be secured with screws, Rivnuts or rivets. (arrows, photo 2).



4/5. Some areas may need to be sanded down for perfect fitment. The edge in the center on top of the skirts and the very front edge (arrows).



6. Apply (recommended) 3M double-sided tape or foam tape to the upper portion of the side skirt extension that meets the body (tape not included). This will prevent marring of the paint from movement while driving. On the 3M double-sided tape, do not remove the side of the tape facing the body yet. Lift one corner of the tape and fold it over about one to two inches, so it is accessible during installation.



7. Apply pressure to the outside of the skirt, and screw in final 6 fasteners (not included), so the skirt is perfectly flush. Work your way from the front of the vehicle towards the center while doing this. Once again, only finger tight on the fasteners. Repeat on other side.

8. When all fasteners are drilled and finger tight, remove the tape from the 3M and press towards the body for a perfect fit. Tighten all fasteners.

