



carhartt.

FALL 2015

WORK BAGS • PACKS • GEAR

We create enduring products to serve and protect hard working people.

We will stand true to our signature durability and functionality as we pursue authentic styles that continue to grow our legacy.

Fall 2015

For our Fall 2015 catalog, we have organized our product by Category for easier browsing, selection and ordering. Our first section, which includes Tool Bags and Tool Belts features a full assortment of rugged gear designed to organize and haul the various tools of your trade. These bags, belts and organizers come in a wide range of styles and sizes – each meticulously built with the level of quality and craftsmanship that you expect from Carhartt. Whether you are on the jobsite, or working on a DIY project, the heritage and legacy of the Carhartt brand shines through in this assortment.

The second section features our ever-popular Duffels, Travelers and Outdoor bags. Our Legacy, D89 and Elements duffels remain key drivers in the category. Each duffel features robust materials and Carhartt's Rain Defender® durable water repellent which means that no matter the choice in material or design - these duffels will endure. Additionally, our collection of Wheeled Gear Bags and Wheeled Travelers have been carefully crafted for the Carhartt road warrior. Each Wheeled Bag features heavy duty treaded wheels, a handle system designed to support the heaviest of hauls and generous storage capacity for clothes, boots, and much more.

Our final section of Packs, Messengers and Briefs includes all of our best selling backpacks and introduces the newest addition to the pack category: our Legacy Classic Work Pack. This pack incorporates the same great materials, durability and comfort found in all of our packs – and is positioned at an incredible value. This catalog also showcases a variety of signage and fixturing options that we offer our retail partners who are looking for unique merchandising strategies for this category.

We thank you once again for your interest, enthusiasm and support for Carhartt Work Bags, Packs and Gear and look forward to another great season and enduring partnership.



TOOL BAGS • TOOL BELTS



TOOL BAGS • TOOL BELTS

LEGACY 14" Tool Bag

100151

Built of 1200D Poly with Rain Defender® durable water repellent and Duravax™ base - 12 exterior pockets and 6 interior loops - Internal metal frame allows for easy access into large main compartment - Load-bearing, abrasion-resistant base - Comfort grip haul handles

14" x 8" x 10.5"

■ BLACK - 01
■ CARHARTT BROWN - 02



LEGACY 16" Tool Bag

100171

Built of 1200D Poly with Rain Defender® durable water repellent and Duravax™ base - 12 exterior pockets, 16 interior pockets and webbing loops - Internal metal frame for easy access into large main compartment - Exterior webbing tape measure loop - Load-bearing, abrasion-resistant base - Comfort grip haul handles - Removable, adjustable shoulder strap with pad

16" x 10" x 10.5"

■ BLACK - 01
■ CARHARTT BROWN - 02



Custom molded load-bearing, abrasion-resistant base

LEGACY 16" Tool Bag with Molded Base

101471

Built of 1200D Poly with Rain Defender® durable water repellent - Custom molded load-bearing, abrasion-resistant base - 12 exterior pockets, 16 interior pockets and webbing loops - Internal metal frame for easy access into large main compartment - Exterior webbing tape measure loop - Comfort grip haul handles - Removable, adjustable shoulder strap with pad

16" x 10" x 10.5"

■ BLACK - 01
■ CARHARTT BROWN - 02



LEGACY 18" Tool Bag with Molded Base

101481

Built of 1200D Poly with Rain Defender® durable water repellent - Custom molded load-bearing, abrasion-resistant base - 15 exterior pockets and 17 interior pockets - Internal metal frame for easy access into large main compartment - Exterior adjustable webbing straps to attach larger tools - Comfort grip haul handles - Removable, adjustable shoulder strap with pad

18" x 11" x 13.5"

■ BLACK - 01
■ CARHARTT BROWN - 02



LEGACY 14" Tool Tote

190705

Built of 600D Poly with Rain Defender® durable water repellent body and base - 15 exterior pockets and 11 interior pockets and loops - Dual webbing haul handles with comfort grip

14" x 10" x 8"

■ BLACK -01

■ CARHARTT
BROWN -02



LEGACY 16" Open Tool Case

103322

Built of heavy duty Poly with Rain Defender® durable water repellent body - Custom molded load-bearing abrasion-resistant base - Molded hinged metal top handle with comfort grip - 20 exterior pockets and 26 interior pockets and loops - Wide open tool case style main compartment - Metal tape measure clip

16" x 11" x 11"

■ BLACK -01

■ CARHARTT
BROWN -02



Limited Edition Made in the USA Tool Bag

170126

Made of heavy duty cotton canvas duck with durable top grain leather base and accents - Internal metal frame for easy access into large main compartment - Comfort grip haul handles made with cotton webbing and top grain leather - Rugged cotton webbing strap closures - 12 interior pockets - Made in the USA

12" x 14" x 6"

■ CARHARTT
BROWN -02



TOOL BAGS • TOOL BELTS

LEGACY Standard Tool Belt

100611

Built of 1200D Poly with Rain Defender® durable water repellent • 6 Compartments • Hammer loop • 2 Side pockets and loops • Webbing waist belt

38" x 9"

■ BLACK -01 ■ CARHARTT BROWN - 02



LEGACY Deluxe Tool Belt

100631

Built of 1200D Poly with Rain Defender® durable water repellent • 9 compartments • 2 loops for hanging belt when not in use • Metal hammer hanger and traditional hammer loop • 2 D-rings for clipping additional items • Removable and adjustable padded, contoured shoulder straps and suspenders (sold separately) • Padded/contoured waist belt

38" x 13"

■ BLACK -01 ■ CARHARTT BROWN - 02



LEGACY Removable Suspenders

101501

Built of 1200D Poly with Rain Defender® durable water repellent • Adjustable padded, contoured shoulder straps and suspenders • Compatible with deluxe tool belt

■ BLACK -01



LEGACY 5-Gallon Bucket Organizer

100702

Built of 600D Poly with Rain Defender® durable water repellent • 3 large exterior pockets to hold gear • 16 exterior tool slots • 16 interior tool slots

17.75" x 14.5"

■ BLACK -01 ■ CARHARTT BROWN - 02



SM:100912

MD:100922

LG:100932

LEGACY Utility Pouches (Set of 2) 100902

Built of durable 600D Poly with Rain Defender® durable water repellent · Set of 2 pouches to organize tool bag · Mesh window to see contents inside · Side haul loop to clip to larger bags

8.5" x 5" and 11.5" x 7"

■ BLACK -01 ■ CARHARTT BROWN - 02



LEGACY Utility Pouches

Built of durable 600D Poly with Rain Defender® durable water repellent · Mesh window to see contents inside · Side haul loop to clip to larger bags

16.6" x 11" - Large
11.5" x 7" - Medium
8.5" x 5" - Small

■ BLACK -01 ■ CARHARTT BROWN - 02



LEGACY Tool Roll 100822

Built of durable 600D Poly with Rain Defender® durable water repellent · 18 Pockets of varying sizes for tools · 3 large side parts pocket with hook and loop closure · Dual side release buckle closure · Haul handle for carrying

26" x 13"

■ BLACK -01 ■ CARHARTT BROWN - 02



Carabineer 141605

Double carabineer (not for climbing) · 3 different sizes of wrenches are 3/8", 1/2", and 9/16" · Flathead screwdriver · Bottle opener

4" x 2.5"

■ STEEL -05



DUFFELS • TRAVEL • OUTDOOR



LEGACY 18" Utility Bag

152121

Built of durable 1200D Poly with Rain Defender® durable water repellent and Duravax™ abrasion resistant base - U-shaped zippered opening for easy access into large main compartment - Zippered exterior pocket to store ammo and small items - 5 additional quick access pockets to store other gear - Internal mesh pocket for added organization - Comfort grip haul handles - Removable, adjustable shoulder strap

18" x 10" x 10.5"

■ BLACK-01 ■ CARHARTT BROWN-02 ■ REALTREE XTRA™-06



LEGACY 20" Gear Bag

100291

Built of 1200D Poly with Rain Defender® durable water repellent and Duravax™ base - Large main compartment to carry tools, cords, equipment and more - Rugged top and side haul handles for carrying - Interior zippered pocket to store quick access items - Adjustable shoulder strap with pad

20" x 10.5" x 10"

■ BLACK-01 ■ CARHARTT BROWN-02 ■ REALTREE XTRA™-06



LEGACY 23" Gear Bag

100211

Built of 1200D Poly with Rain Defender® durable water repellent and Duravax™ base - Large main compartment to carry tools, cords, equipment and more - Rugged top and side haul handles - Interior zippered pocket to store quick access items - Removable, adjustable shoulder strap with pad

23" x 11" x 11.5"

■ BLACK-01 ■ CARHARTT BROWN-02 ■ REALTREE XTRA™-06



LEGACY 30" Gear Bag

100231

Built of 1200D Poly with Rain Defender® durable water repellent and Duravax™ base - Large main compartment to carry tools, cords, equipment and more - Secondary compartment for separating clothes and shoes - Interior zippered pocket to store quick access items - Rugged top and side haul handles for carrying - Removable, adjustable shoulder strap with pad

30" x 14" x 15"

■ BLACK-01 ■ CARHARTT BROWN-02 ■ REALTREE XTRA™-06



DUFFELS • TRAVEL • OUTDOOR

D89 20" Round Duffel

110293

Built of 600D Poly Ripstop with Rain Defender® durable water repellent and Poly base - Large zippered opening into main compartment - Exterior zippered pocket to store items for quick access - Interior hanging zippered pocket - Removable, adjustable shoulder strap with pad

20" x 11" x 10"

■ BLACK - 01 ■ GRAVEL - 04 ■ RUGGED CAMO - 15



D89 24" Round Duffel

110213

Built of 600D Poly Ripstop with Rain Defender® durable water repellent and Poly base - Large zippered opening into main compartment - Exterior zippered and slash pockets to store items for quick access - Interior hanging zippered pocket - Removable, adjustable shoulder strap with pad

24" x 14" x 12"

■ BLACK - 01 ■ GRAVEL - 04 ■ RUGGED CAMO - 15



D89 28" Round Duffel

110223

Built of 600D Poly Ripstop with Rain Defender® durable water repellent and Poly base - Large zippered opening into main compartment - Exterior zippered and slash pockets to store items for quick access - Interior hanging zippered pocket and 2 interior mesh pockets - Removable, adjustable shoulder strap

28" x 14" x 13"

■ BLACK - 01 ■ GRAVEL - 04 ■ RUGGED CAMO - 15



ELEMENTS 20" Dome Duffel

120294

Built of 840D Nylon with TPU and Rain Defender® durable water repellent · Large dome shape main compartment opens for easy packing · Interior hanging zippered pocket · Removable, adjustable shoulder strap with pad

20" x 12" x 9"

■ BLACK -01



ELEMENTS 24" Dome Duffel

120214

Built of 840D Nylon with TPU and Rain Defender® durable water repellent · Exterior waterproof zippered pocket for storing quick access items · Large dome shape main compartment opens for easy packing · Interior hanging zippered pocket · Removable, adjustable shoulder strap with pad

24" x 13" x 10"

■ BLACK -01



ELEMENTS 28" Dome Duffel

120224

Built of 840D Nylon with TPU and Rain Defender® durable repellent · Exterior waterproof zippered pocket for storing quick access items · Large dome shape main compartment opens for easy packing · Interior hanging zippered pocket · 2 interior mesh pockets · Removable, adjustable shoulder strap with pad

28" x 15" x 13"

■ BLACK -01



Limited Edition

Made in the USA Duffel

170226

Made of heavy duty cotton canvas duck with durable full grain leather base and accents · Main compartment with large opening to access contents inside · External zippered compartment to access items quickly · Internal zippered pocket · Comfort grip haul handles made with cotton webbing and top grain leather · Antique brass hardware · Made in the USA

20" x 10.5" x 10"

■ CARHARTT BROWN - 02



LEGACY 30" Wheeled Gear Bag

101731

Built of 1200D Poly with Rain Defender® durable water repellent and Duravax™ abrasion-resistant base · 80mm treaded wheels and extension handle to haul heavy gear · Large main compartment to carry tools, cords, equipment and more · Secondary compartment for separating clothes and shoes · Interior zippered pocket to store quick access items · Rugged top and side haul handles for carrying

30" x 13" x 15"

■ BLACK -01 ■ CARHARTT BROWN -02



LEGACY 36" Wheeled Gear Bag

100251

Built of 1200D Poly with Rain Defender® durable water repellent and Duravax™ base · 80mm treaded wheels to transport heavy tools · Large main compartment to carry tools, cords, equipment and more · Secondary compartment for separating clothes and shoes · Interior zippered pocket to store quick access items · Rugged top and side haul handles for carrying

36" x 16" x 18"

■ BLACK -01 ■ CARHARTT BROWN -02



Large main and secondary compartments for carrying large items & clothing.



Extension handle makes it easy to haul heavy gear



80mm treaded wheels

Carry-on	21" x 14" x 21.5" x 9"	191701
	25" x 15.5" x 25" x 13"	191726
	28" x 17" x 28" x 13"	191727

LEGACY Wheeled Gear Travelers

Built of 1200D Poly with Rain Defender® durable water repellent and Duravax™ base - 80mm treaded wheels with extension handle - Exterior zippered pocket to store ticket, books, or tablet - Large main compartment with multiple interior pockets and compression straps for clothes and gear - Dedicated shoe compartment - Removable laundry/gear pouch

■ BLACK -01

■ CARHARTT BROWN -02



LEGACY Dopp Kit

192522

Built of 600D Poly with Rain Defender® durable water repellent body and base - Main compartment with water resistant coating for toiletries - Large zippered opening

9" x 4.5" x 4.5"

■ BLACK -01

■ CARHARTT BROWN -02



DUFFELS • TRAVEL • OUTDOOR

LEGACY Scoped Rifle Bag

48": 151982
52": 151992

Built of durable 1200D Poly with Rain Defender® durable water repellent and Duravax™ abrasion resistant base™. Gear pocket to store shells and other equipment. Padded and lined interior to protect contents. Removable, adjustable shoulder strap.

- BLACK -01
- CARHARTT BROWN-02
- REALTREE XTRA™-06

48": 48" x 9.125" x 2.25"

52": 52" x 9.5" x 2.5"



LEGACY Shotgun Bag

48": 152082
52": 152092

Built of durable 1200D Poly with Rain Defender® durable water repellent and Duravax™ abrasion-resistant base. Gear pocket to store shells and other equipment. Padded and lined interior to protect contents. Removable, adjustable shoulder strap.

- BLACK -01
- CARHARTT BROWN-02
- REALTREE XTRA™-06

48": 48" x 6.75" x 2.35"

52": 52" x 7.19" x 2.5"



PACKS • MESSENGERS • BRIEFS



PACKS • MESSENGERS • BRIEFS

LEGACY Classic Work Pack

190325

Built of 1200D Poly Ripstop with Rain Defender® durable water repellent and Duravax™ base • Large main compartment to store books, files, or computer • Zippered organization compartment for additional storage and room to stash power cords and accessories • Hanging zippered pocket • Contour fit shoulder straps • Padded air mesh back panel

12.25" x 18.25" x 9"

■ BLACK -01 ■ CARHARTT BROWN -02



D89 Backpack

110313

Built of 600D Poly Ripstop with Rain Defender® durable water repellent and Poly base • Large main compartment to store books, files, or computer • Zippered organization compartment for additional storage and room to stash power cords and accessories • Hanging zippered pocket • Contour fit shoulder straps • Padded air mesh back panel

12" x 17.75" x 9"

■ BLACK -01 ■ GRAVEL -04 ■ RUGGED CAMO -15



LEGACY Standard Work Pack

190321

Built of 1200D Poly with Rain Defender® durable water repellent and Duravax™ base • 2 mesh side pockets • Large main compartment to store books, files or computer • Zippered organization compartment for additional storage and room to store power cords and accessories • Contour fit shoulder straps • Padded air mesh back panel

12" x 18" x 11"

■ BLACK -01 ■ CARHARTT BROWN -02 ■ REALTREE XTRA™ -06



LEGACY Deluxe Work Pack

190331

Built of 1200D Poly with Rain Defender® durable water repellent and Duravax™ base • Dedicated computer pocket that stores up to a 17" laptop • Zippered compartment with tricot lining to store safety glasses • Large main compartment to store books, files and folders • Front main compartment with additional pockets for gear • 2 zippered utility side pockets • Zippered organization compartment • Contour fit shoulder straps • Padded air mesh back panel

15" x 17.5" x 12.5"

■ BLACK -01 ■ CARHARTT BROWN -02 ■ REALTREE XTRA™ -06



PACKS • MESSENGERS • BRIEFS

ELEMENTS Army Duffel Backpack 121304

Built of 840D Nylon with TPU and Rain Defender® durable water repellent • Large main opening for easy packing • Waterproof zipper opening into hatch style compartment to keep dirty clothes and shoes separate • Interior hanging pocket to store quick access items • Durable side release buckles to cinch bag down • Contour fit shoulder straps

20" x 12" x 9"

■ BLACK -01



D89 Messenger 110523

Built of 600D Poly Ripstop with Rain Defender® durable water repellent and Poly base • Large main compartment • Front flap with zippered pocket conceals organization panel and access into main compartment • Padded pocket for computer in main compartment • Durable side release buckle closure • Adjustable shoulder strap

19" x 12.5" x 5.5"

■ BLACK -01 ■ GRAVEL-D4



ELEMENTS Messenger 120504

Built of 840D Nylon with TPU and Rain Defender® durable water repellent • Large main compartment • Front flap conceals organization panel and zippered utility pocket • Interior divider to keep computer and contents organized • Durable side release buckle closure • Shoulder strap with adjustable cam buckle

20" x 11" x 7"

■ BLACK -01



PACKS • MESSENGERS • BRIEFS

D89 Brief

110413

Built of 600D Poly Ripstop with Rain Defender® durable water repellent and Poly base · Main compartment is padded for even the largest laptop · Zippered organization compartment for additional storage and room to stash power cords and accessories · Back slash pocket · Removable, adjustable shoulder strap with pad

16.5" x 7.75" x 12"

■ BLACK -01 ■ GRAVEL-04



LEGACY Brief

100431

Built of 1200D Poly with Rain Defender® durable water repellent and Duravax™ base · Front main compartment is padded for even the largest laptop · Back main compartment for files, notebooks and folders · Front organization panel to allow items to be accessed quickly · Zippered organization compartment · 2 zippered utility side pockets · Removable, adjustable shoulder strap with pad

16.5" x 7.75" x 13"

■ BLACK -01 ■ CARHARTT BROWN -02



D89 Tablet Sleeve

202824

Built of 600D Poly Ripstop with Rain Defender® durable water repellent · Padded tablet sleeve with tricot lining · Front zippered pocket gusset for cords and gear

10" x 7.75" x 1"

■ BLACK -01 ■ GRAVEL-04



D89 Computer Sleeve

15": 202706

17": 202723

Built of 600D Poly Ripstop with Rain Defender® durable water repellent · Padded laptop sleeve with tricot lining · Front zippered pocket gusset for cords and gear

15": 15.5" x 10" x 1"

17": 16.5" x 11" x 1"

■ BLACK -01 ■ GRAVEL-04





PACKS • MESSENGERS • BRIEFS

LEGACY Womens Cross Body Carry All 131221

Built of 600D Poly with Rain Defender® durable water repellent · Large main compartment with flap closure · 3 interior pockets for organization · Adjustable cross body shoulder strap

9" x 11" x 2.5"

■ BLACK -01

■ CARHARTT BROWN -02



LEGACY Womens North South Tote 131121

Built of 600D Poly with Rain Defender® durable water repellent · Large main compartment · Interior organization panel with zipper pocket · 2 exterior pockets to store quick access items · Snap closure

15.5" x 14" x 5.5"

■ BLACK -01

■ CARHARTT BROWN -02



LEGACY Womens East West Tote 131021

Built of 600D Poly with Rain Defender® durable water repellent · Large main compartment with divider pocket · Interior organization panel with zipper pocket · 2 exterior pockets to store quick access items · Zip closure

16.5" x 13.5" x 7"

■ BLACK -01

■ CARHARTT BROWN -02



MERCHANDISING SUPPORT

SIGNAGE



DOUBLE-SIDED SIGN
8.5" x 11"/CRGB1



DOUBLE-SIDED SIGN
8.5" x 11"/CRGB2



DOUBLE-SIDED SIGN
11" x 8.5"/CRGB3



DOUBLE-SIDED SIGN
24" x 8"/CRGB5



DOUBLE-SIDED SIGN
11" x 8.5"/CRGB4

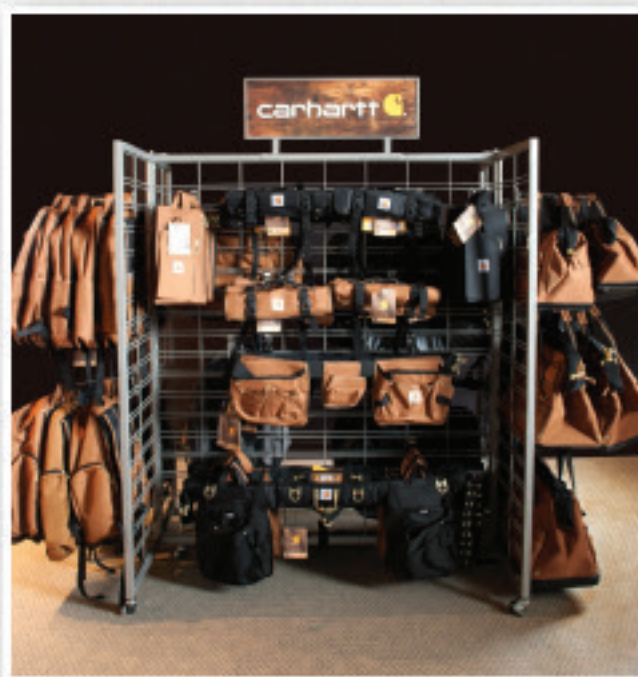
FIXTURES



Y ACCESSORIES FIXTURE

29"(w) x 32"(d) x 80"(h)/ACF-402

Includes 72 peg hooks. Capacity 480-640 units. Fixture weight: 52 lbs. Create a strong Carhartt Accessory statement with this Y Accessory fixture.



WORK BAGS, PACKS, & GEAR FIXTURE

51"(w) x 35"(d) x 64"(h)

Includes 25 peg hooks. Capacity 34-84 units. Fixture weight: 79 lbs. Create a strong Carhartt Accessory statement with this Work Bags, Packs, & Gear fixture.

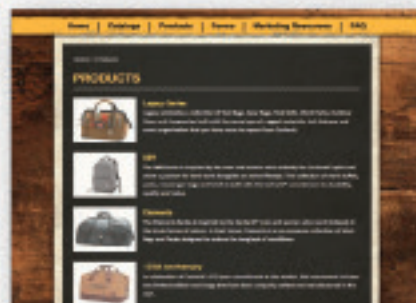
Carhartt Work Bags via Carhartt Direct

Buying Carhartt work bags, packs and gear has never been easier. Carhartt Direct enables you to more efficiently place orders, check real-time inventory, check your order status, download artwork and get up-to-date information on your Carhartt account any time you like. Open and online 24 hours a day. Our business partners are welcome to purchase any of our catalog items through Carhartt Direct online platform. Access to the online system is free and works with nearly all web browsers. To access the system and set-up an account, please direct your web-browser to <http://directbags.carhartt.com>. Our customer service team provides Carhartt Direct support during regular business hours. For more information, please contact our team at service.carhartt@5horizonsgroup.com or 855-670-9930 x 107.



Retail Media Library

New and Improved Retail Media Library at <http://carhartt.5horizonsgroup.com>. Download product and lifestyle images. To take advantage of this service go to <http://carhartt.5horizonsgroup.com> and enter password: "workbags" for entry to the site. If you have any questions please call 855.670.9930 ext. 109 or email us at sales.carhartt@5horizonsgroup.com



LEARN TO EARN GREAT DISCOUNTS ON CARHARTT.

Retail sales associates can go online to 3point5.com to learn more about Carhartt's rich history, durable fabrics and rugged apparel via fast and fun Edu-Games. Do it today. Carhartt's tough, but the training's not.

GET STARTED NOW TO GET DISCOUNTS SOON:
VISIT WWW.3POINT5.COM



CARHARTT WORK BAGS, PACKS, AND GEAR TERMS & CONDITIONS

SALES, SERVICE & CONTACT INFORMATION

For General Inquiries:

5 Horizons Group, LLC
3155 Sutton Boulevard
Saint Louis, MO 63143
T: 855.670.9930
F: 855.730.5931

For Sales:

T: 855.670.9930 x 107
sales.carhartt@5horizonsgroup.com

For Customer Service:

T: 855.670.9930 x 108
service.carhartt@5horizonsgroup.com

National Accounts:

East Coast
Kevin Deutsch
855.670.9930 x112
Midwest
Alisa Buckner
855.670.9930 x110
West Coast
Carol Wehling
855.670.9930 x121

For Carhartt Licensed Products (CLP):

To order, contact:
Carhartt Licensed Products
Phone: 1.877.477.2281
Fax: 1.877.477.1008
customerservice@directclp.com

Carhartt Direct Orders:

<http://directbags.carhartt.com>

TERMS & CONDITIONS

Distribution Policy: We want to ensure Carhartt® products are sold by approved retailers and only to the ultimate consumer. This applies to closeout and irregular products, as well as first-quality merchandise. If Carhartt® goods supplied to you by 5 Horizons Group, LLC are transferred from an approved location to an unapproved location, we reserve the right to terminate our business relationship.

Carhartt® Work Bags via Carhartt Direct®: Our business partners are welcomed to purchase any of our catalog items through our Carhartt® Direct online platform. Access to the online system is free and works with nearly all web browsers. To access the system and set-up an account, please direct your web browser to <http://directbags.carhartt.com>. Our team will also provide support during regular business hours. For more information, please contact our team at service.carhartt@5horizonsgroup.com, or 855.670.9930 x 108.

Warranty: Carhartt® work bags, packs and gear - as developed and sold by 5 Horizons Group, LLC - are covered by a Limited Warranty against manufacturing defects in materials and workmanship for the normal life of the product. If such a defect appears, we will repair your product or replace it, as appropriate and at our discretion, with the same or an equivalent model, free of charge. This Warranty is non-transferable, subject to proof-of-purchase and does not cover normal wear and tear, cosmetic damage, abuse, misuse, accidents, common carrier damage, neglect, or damage caused by use of the product for a purpose other than intended. The Warranty does not extend to loss of time or damage to the contents in the bag. However, we understand that product wear and tear over time or under frequent use is inevitable and can be expected. While our Warranty does not cover natural wear and tear, we do keep an inventory of replacement parts and whenever possible, we will gladly repair damage resulting from wear and tear for a nominal fee. In all cases, customer shall pay for shipping costs to send product to 5 Horizons. For more information regarding our warranty, or to submit a claim, please contact 855-670-9930 x108 or email us at service.carhartt@5horizonsgroup.com

Credit Approval: All orders are subject to acceptance by 5 Horizons Group, LLC in order to better serve our customers. 5 Horizons Group, LLC reserves the right to cancel an order based on an inability to obtain credit approval or make payment arrangements within a defined period of time. Upon acceptance of order:

- Program Orders (Dating) and Future Orders must receive credit approval 30 days prior to selected ship date.
- At Once Orders must receive credit approval within 30 days.

Freight: FOB Saint Louis, MO

Payment Terms:

- Net 30 days from invoice date
- Credit Card payments accepted; subject to processing charge
- Drop Ship orders are subject to a \$5.00 per order charge

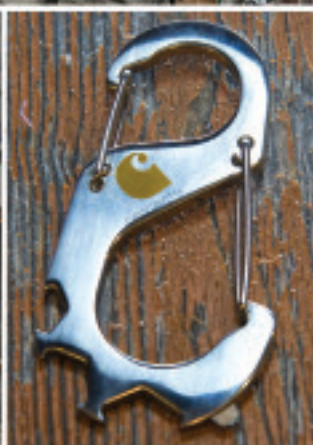
Deductions: 5 Horizons Group, LLC will not accept any unauthorized invoice deductions.

Disputes: In the event of a disagreement, we require written notification with supporting documentation. This notification must be received within six months of the dispute.

Claims: Claims for shipments on merchandise damaged or lost in transit are to be filed against the carrier or purchaser. Our shipments are to be filed against the carrier by purchaser. Our shipments are carefully audited for accuracy, however, should you find it necessary to request a claim, contact our Customer Service Department at 855-670-9930 x 108 or service.carhartt@5horizonsgroup.com. Please specify reason, order number, style number, size and quantity. Carhartt® licensee, 5 Horizons Group, LLC, reserves the right to deny claims not filed on a timely basis. All claims must be made within 6 months of invoice date. 5 Horizons Group, LLC reserves the right to deny claims not filed on a timely basis.

Returns: Work Bags, Packs and Gear returned for credit or replacement are subject to inspection and approval by our Return Department. Items not approved will be returned and no credit or replacement issued. Returns will not be accepted without a Return Authorization Number. To obtain a Return Authorization Number, please contact 5 Horizons Group at 855-670-9930 x108 or service.carhartt@5horizonsgroup.com. Please be prepared to provide style numbers, reason for requesting a return, quantity and the original invoice number or order confirmation number. Return Authorization Numbers are only valid for 30 days on the items specified. 5 Horizons Group, LLC does not allow for handling fees. A restocking fee of 15% may apply under certain circumstances. Cartons containing returns may not weight more than 40lbs.

The information contained in this catalog is correct at the time of printing and is subject to change without notice.





5 Horizons Group, LLC
3155 Sutton Blvd, Saint Louis, MO 63143
Toll Free: 855.670.9930 x 107 Fax: 855.730.5931
<http://directbags.carhartt.com>

