

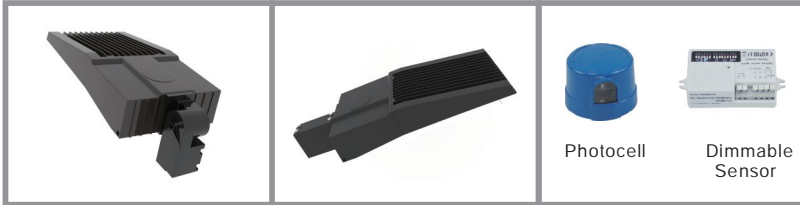


Product Description

- ▶ High pressure die casting housing ,anti-static powder painting.
- ▶ High thermal conductive material and high efficiency cooling system.
- ▶ High efficient LM80 approved LED Chips ensures excellent performance
- ▶ IP Rating: IP65

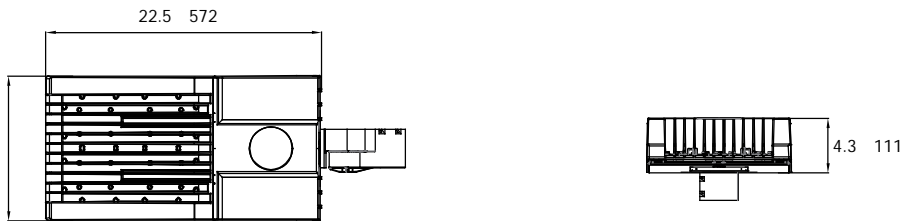
Application

Auto Dealerships, Roadways, Freeways, Highways, Parking lots, Off-street areas, etc



Input Power	Efficacy (5000K)	ETL	DLC	Replaces	Input Voltage	CCT (K)	CRI	Power Factor	THD	Installation
80W	133LM/W	✓	✓	175-250W HID	120-277V 50/60HZ	4000 5000	>75	>0.92	<15%	Slip Fitter, U-Bracket or Straight Arm
120W	120LM/W	✓	✓	250-400W HID						
150W	124LM/W	✓	✓	400-600W HID						

Inch(mm)



Distribution Curve Flux

