



The Mechanics Matter.

Kielder®

PRODUCT RANGE



Contents

TYPE18 Tools

Introduction
Impact Range
Drills
Ratchet
Angle Grinder
Riveter

Accessories

Batteries & Chargers
Impact Sockets
Work Light
Drill Bits
Grinder Discs

TYPE18 Kits

DUO Twin Packs
Tech Kit

Tool Flight Cases

PRO Mechanics Tool Flight Cases
Fully Loaded Flight Case
Combo Kits
Build Your Own Kits

Motorsport

Layer Cake Spare Wheel Kit
Impact Wrench Holder
Car Preparation
Mechanics Kneel Mat
Torque Wrenches
Digital Tyre Pressure Gauge

Hand Tools

Individual Hand Tools
9pc Screwdriver Set
11pc Spanner Set

The Origins Of Our Products Are Simple;

Developed from hands-on knowledge that you only get in the garage, service park or workshop, rather than a boardroom! Just like you we want well-specified, reliable tools that feel good and get the job done - whatever the task in hand...

Fully compatible and interchangeable 18v battery system, providing ultimate flexibility across the range; power each tool from one single battery. Importantly, the **TYPE18** battery fitment will never change, meaning that all Kielder 18v tools, old and new, can always be powered by a **TYPE18** battery.

KielderWT
Designed & Engineered in the UK.

Impact Range

All **TYPE18** Impact Tools feature:

Digital brushless motors for smooth, frictionless operation

- ✓ Variable speed trigger for ultimate control
- ✓ Electronic brake which offers near instant stopping power
- ✓ Ergonomic soft-grip handle

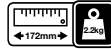


High torque
from a
compact
design.





1 KWT-012



TYPE18 Brushless 18v 1/2" 700Nm Impact Wrench

KWT-012-05	Tool body, 1x 4.0Ah , Charger, Case
KWT-012-51	Tool body, 2x 4.0Ah , Charger, Case
KWT-012-15	Tool body, 1x 5.0Ah , Charger, Case
KWT-012-61	Tool body, 2x 5.0Ah , Charger, Case
KWT-012-56	Tool body only

2 KWT-002

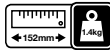


TYPE18 Brushless 18v 1/2" 430Nm Impact Wrench

KWT-002-03	Tool body, 1x 4.0Ah , Charger, Case
KWT-002-08	Tool body, 2x 4.0Ah , Charger, 17,19, 21mm Deep Sockets, Case
KWT-002-06	Tool body only



3 KWT-002

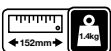


TYPE18 Brushless 18v 3/8" 220Nm Impact Wrench

KWT-002-17	Tool body, 2x 2.0Ah , Charger, Case
KWT-002-19	Tool body, 2x 4.0Ah , Charger, Case
KWT-002-22	Tool body, 2x 2.0Ah , 10, 13, 19, 22mm Deep Sockets, 150mm Extension, Charger, Case
KWT-002-23	Tool body, 2x 2.0Ah , 12pc Short Socket Set, Charger, Case
KWT-002-24	Tool body, 2x 4.0Ah , 12pc Short Socket Set, Charger, Case
KWT-002-16	Tool body only



4 KWT-005



TYPE18 Brushless 18v 1/4" 200Nm Impact Driver

KWT-005-07	Tool body, 2x 2.0Ah , Charger, Case
KWT-005-09	Tool body, 2x 4.0Ah , Charger, Case
KWT-005-06	Tool body only



Drills



TYPE18 Drills feature:

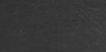
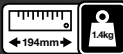
- Digital brushless motors for smooth, frictionless operation
- 13mm Keyless Metal Chucks
- ✓ Variable trigger switch allows further speed control
- ✓ Electronic brake which offers near instant stopping power
- ✓ Integrated LED work light
- ✓ Ergonomic soft-grip handle



KWT-014

TYPE18 Brushless 18v Combi Drill

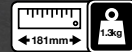
- 21 Torque settings for screw driving, plus drill & hammer modes, 52Nm max torque
- 2 Speed metal gearbox: 0-400 / 0-1600 min-1
- 38mm max. wood
- 13mm max. steel
- 10mm max. masonry
- <0.3mm run-out at 100mm



KWT-011

TYPE18 Brushless 18v Drill Driver

- 18 Torque settings for screw driving, plus drill mode, 52Nm max torque
- 2 Speed metal gearbox: 0-400 / 0-1600 min-1
- 38mm max. wood
- 13mm max. steel
- <0.2mm run-out at 100mm



KWT-014-12	Tool body, 2x 2.0Ah, Charger, Case
KWT-014-13	Tool body, 2x 4.0Ah, Charger, Case
KWT-014-17	Tool body, 2x 5.0Ah, Charger, Case
KWT-014-06	Tool body only

KWT-011-01	Tool body, 1x 2.0Ah, 4 x Cobalt Bits, Charger, Case
KWT-011-02	Tool body, 2x 2.0Ah, 4 x Cobalt Bits, Charger, Case
KWT-011-03	Tool body, 2x 4.0Ah, 4 x Cobalt Bits, Charger, Case
KWT-011-06	Tool body only



**Compact.
Lightweight.
Powerful.
Precise.
Gets the job done.**



KWT-010 TYPE18

18v 3/8" Ratchet



Balanced feel, lightweight & manoeuvrable

- Features strengthened and extended head design, for access into tighter areas
- Engineered to produce up to 60Nm - speeds up the assembly / disassembly process
- Variable speed trigger provides optimum control
- in use and can be locked in "off" position to isolate tool
- Robust ratchet mechanism with forward and reverse selector
- Can be stood or stored upright on battery base



KWT-010-11	Tool body, 1x 2.0Ah, Charger, Case
KWT-010-12	Tool body, 2x 2.0Ah, Charger, Case
KWT-010-16	Tool body only



KWT-013 TYPE18 Brushless

18v 115mm Angle Grinder



KWT-013-02 Tool body, **2x 5.0Ah**, Charger, Case

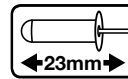
KWT-013-06 Tool body only

All KWT-013 Angle Grinders are supplied with side handle.

- Compatible with 115mm Grinding Disc - M14 Spindle Thread.
- Variable speed (4500 – 8000rpm) through 5 switchable settings.
- High current electronics maximise the power delivery.
- Overload protection system for longer service life and battery run-time.
- Dual function switch can be operated as a trigger or with lock-on.
- Quick release tool-less disc change
- Compact design, with innovative 90° battery fitment, only 370mm in length.

KWT-009 TYPE18 Brushless

18v Riveter



High capacity rivet gun for rapid assembly applications

- Heavy-duty tool and suitable for up to 6.4mm Pop rivets
- Powerful pulling force of 9000Nm, coupled with 23mm stroke length for fast riveting performance
- Brushless motor works with a precision engineered internal mechanism for longer service life
- Approximately 1400 x 5mm Aluminium Rivets per 5.0Ah battery charge
- Approximately 1200 x 5mm Stainless Steel Rivets per 5.0Ah battery charge

KWT-009-01 Tool body, **1x 2.0Ah**, Charger, Case

KWT-009-02 Tool body, **2x 2.0Ah**, Charger, Case

KWT-009-03 Tool body, **1x 5.0Ah**, Charger, Case

KWT-009-04 Tool body, **2x 5.0Ah**, Charger, Case

KWT-009-06 Tool body only



All KWT-009 Riveters are supplied with four interchangeable front nozzles for various rivet sizes, from 2.4mm to 6.4mm, plus tool for quick nozzle change.

Please note: This tool is not suitable for use with structural rivets such as Monobolts.

**Cordless
convenience.
Powerful
performance.**



18v Batteries & Charger



KWT-004-01	Fast Charger
KWT-003-04	2.0Ah Battery Pack
KWT-003-03	4.0Ah Battery Pack
KWT-003-25	5.0Ah Battery Pack

Please note: 2.0Ah is not suited for use with KWT-012 and KWT-013 models

- Compatible and interchangeable TYPE18 battery system
- All batteries feature LED charge level indicator
- High quality Li-ion battery cells providing reliable & stable performance
- Holds charge for up to 12 months, if left unused
- No memory effect from partial charging

Impact Sockets



KWT-126-01	1/2" Deep (80mm) 3pc Impact Socket Set (17,19 & 21mm)
KWT-126-02	1/2" Deep (80mm) 6pc Impact Socket Set (13, 14, 15, 17,19 & 21mm)
KWT-126-04	1/2" Deep (80mm) 11pc Impact Socket Set 10 - 21mm (20mm not included)
KWT-126-05	Same as above but on rail.
Single packs	As above

- Manufactured from high quality Chrome Molybdenum steel; incredibly long lasting and durable
- Strong and robust inner wall and even weight distribution along the socket length to impart maximum impact

KWT-384-01	3/8" Short (27.5mm) 12pc Impact Socket Set 7 - 19mm (9mm not included)
KWT-384-02	Same as above but on rail.
KWT-386-01	3/8" Deep (62mm) 11pc Impact Socket Set 8 - 19mm (9mm not included)
KWT-386-02	Same as above but on rail.
Single Packs	As above



All sets supplied in foam, as standard. Socket rail options also available, where stated.



Work Light

- Multi-positional, pocket-sized ultra bright LED worklight
- Over 16 hours illumination from 4.0Ah battery
- Unique latching hook design



KWT-006-06 Work Light only

Drill Bits



- DIN338 Engineering Grade - High Speed Steel with 8% cobalt for added strength and more resistant to wear
- Ideal for hard materials such as steel, stainless steel, non-ferrous metals and alloy



KWT-092-01	Cobalt Drill Bits 3, 4, 5, 6, 8 mm
KWT-092-02	Cobalt Drill Bits 1-10mm in 0.5mm increments (19pc)
Single Packs	-
Twin Packs	-



Grinder Discs

- Professional-grade discs; offer durability and strength through tough materials



KWT-145-01	115mm x 1mm x 22.2mm Steel	Single
KWT-145-11	Cutting Disc	10pcs
KWT-145-02	115mm x 6mm x 22.2mm	Single
KWT-145-12	Grinding Disc	5pcs
KWT-145-40	115mm Flap Disc 40 Grit	Single
KWT-145-43		3pcs
KWT-145-80	115mm Flap Disc 80 Grit	Single
KWT-145-83		3pcs
KWT-145-120	115mm Flap Disc 120 Grit	Single
KWT-145-123		3pcs



DUO

Twin Packs

Machines that work perfectly as a pair.
 All DUO Twin Packs are supplied with
 TWO compatible TYPE18 Li-ion batteries
 and a charger.



KWT-TPK

Combi Drill & Impact Driver



KWT-TPK-01

KWT-014 Combi Drill, KWT-005 Impact Driver, **2 x 2.0Ah**,
 Charger & Case

KWT-TPK-02

KWT-014 Combi Drill, KWT-005 Impact Driver, **2 x 4.0Ah**,
 Charger & Case

KWT-TPK-03

KWT-014 Combi Drill, KWT-005 Impact Driver, **2 x 5.0Ah**,
 Charger & Case

KWT-014



KWT-005



KWT-TPK

Impact Wrench & Angle Grinder



KWT-TPK-08

KWT-012 Impact Wrench, KWT-013 Angle Grinder, 2 x 5.0Ah, Charger & Case

KWT-012



KWT-013



3/8" Impact Wrench 30pcs Tech Kit

Get tooled up with the fully loaded Kielder Tech Kit.

The 3/8" Impact Wrench Tech Kit combines cordless power with precise, ergonomic hand tools.

From the Adjustable Spanner to the Ratchet Handle, this essential kit has got you covered for a wide range of repairs, service and maintenance work. All supplied in ONE carry case, with robust EVA cut foam insert.



KWT-002-TK1

18v 3/8" Impact Wrench Tech Kit, with Hand Tools and Socket Set

(Charger sold separately)



Kielder[®] PRO

MECHANICS TOOL FLIGHT CASE

Fully customisable, professional quality tool storage solution from Kielder.

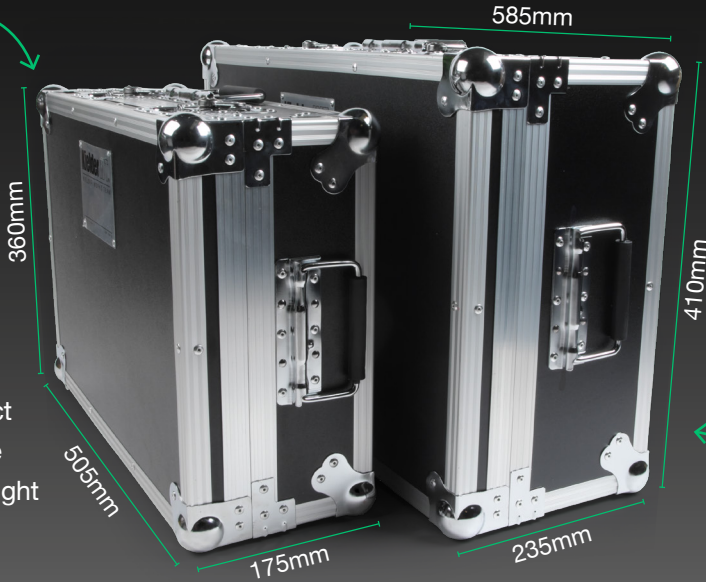
Available in two sizes (PRO-S & PRO-X). Ideal for motorsport service crews, race & rally teams, plus any industry where mobile tool & equipment storage is required; fitters, agriculture, construction, service and maintenance.

PRO S

PRO X



- Compact
- Portable
- Lightweight



- Huge Capacity
- Stores 4x 18v tools



Customisable Foam



Top Tool Layer



KWT-008-15 with Tool Tray

Tools not included

KWT-008-01	PRO-X includes 2 x Customisable Foam Inserts (Upper & Lower), 1 x Hand Tool Holder, Cutting Tool and Instructions
KWT-008-05	PRO-S includes 1 x Customisable Foam Insert, 1 x Hand Tool Holder, Cutting Tool and Instructions
KWT-008-15	Same as KWT-008-05 but with Aluminium Tool Tray instead of Foam Insert



PRO X

Fully Loaded Kits



The complete, customisable and transportable tool storage solution - fully loaded with Kielder TYPE18 Tools, Batteries, Charger, Hand Tools and Accessories.

- 700Nm 1/2 Impact Wrench
- 220Nm 3/8 Impact Wrench
- 115mm Angle Grinder
- 52Nm 13mm Drill Driver / Combi Drill
- 5.0Ah Battery x 2
- 2.0Ah Battery x 2
- Charger (outside the case)
- Tool Kit Essentials
- Hand Tools & Accessories



KWT-008-PRO-X-FL01	As above, with Drill Driver
KWT-008-PRO-X-FL02	As above, with Combi Drill

Packed with cordless & hand tools

POWERFULL

Combo Kits



KWT-008-PRO-X-CT01	1/2" Wrench, Grinder, 3/8" Wrench, Drill Driver, 2 x 5.0Ah, 2 x 2.0Ah, 1 x Charger.*
KWT-008-PRO-X-CT02	Same as above but with Combi Drill instead of Drill Driver
KWT-008-PRO-S-WK01	1/2" Wrench, 1/2" Torque Wrench, 11pc 1/2" Socket Set, Tyre Pressure Gauge, 2 x 4.0Ah, 1 x Charger.**
KWT-008-PRO-S-CT01	1/2" Wrench, Grinder, 11pc 1/2" Socket Set, Grinder Discs, 2 x 5.0Ah, 1 x Charger.**

* & Customisable Upper Foam
** Supplied outside of case

Build Your Own Kit

Choose your case size

PRO X

PRO S

Select up to 4 power tools

Select up to 2 power tools

Kielder

Kielder

Plus add your choice of TYPE18 batteries, hand tools and accessories.

2Ah

4Ah

5Ah

Get yours now at kielder.co





Spare Wheel Kit

- 13"
- 14"
- 15"
- 16"
- 17"
- 18"



A truly innovative "layered" spare wheel kit, which is designed to securely hold, protect and provide quick access to essential tools and equipment, when an urgent, on-the-go repair is needed.

Comes in a range of sizes to fit your car's spare wheel.

1st Layer

Impact Wrench Holder



KWT-017-13	13" Wheel Standard Design
KWT-017-14	14" Wheel Standard Design
KWT-017-15 / TP	15" Wheel Standard Design / Tow Rope Cut-Out
KWT-017-16 / TP	16" Wheel Standard Design / Tow Rope Cut-Out
KWT-017-17 / TP	17" Wheel Standard Design / Tow Rope Cut-Out
KWT-017-18 / TP	18" Wheel Standard Design / Tow Rope Cut-Out

All 15" and above variants include central post cut-out as standard.



1st Layer: Spare Wheel Impact Wrench Holder



2nd Layer: Spare Wheel Hand Tool Kit (Fully Loaded)



2nd Layer

Hand Tool Kit

All 13" & 14" sizes include:

- 9pc Colour Coded Long Hex Key Set (1.5, 2, 2.5, 3, 4, 5, 6, 8, 10mm)
- 150mm / 6" Long Nose Pliers
- 7" (175mm) Locking Grip Pliers
- 8" (200mm) Adjustable Spanner 32mm Capacity, with Alligator Jaw
- 125mm / 5" Precision Side Cutter
- 3/8" Ratchet Handle 48T
- 3/8" to 1/2" Socket Adapter
- 1/2" to 3/8" Socket Adapter
- 150mm 3/8" Extension
- 75mm 3/8" Extension
- Screwdriver Handle for 1/4" Hex Driver Bits, PH2 Bits, 5mm Slot (SL5)
- KWT-384-01 3/8" Short Impact Socket Set 12pc (7, 8, 10, 11, 12, 13, 14, 15, 16, 17, 18 & 19mm)

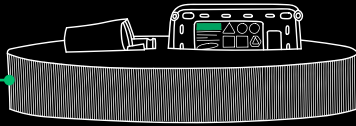
KWT-017-131-01	Spare Wheel Hand Tool Kit for 13" Wheel
KWT-017-131-02	Spare Wheel Hand Tool Kit for 14" Wheel
KWT-017-131-03	Spare Wheel Hand Tool Kit for 15" Wheel
KWT-017-131-04	Spare Wheel Hand Tool Kit for 16" Wheel
KWT-017-131-05	Spare Wheel Hand Tool Kit for 17" Wheel
KWT-017-131-06	Spare Wheel Hand Tool Kit for 18" Wheel

15" - 18" sizes include all of the above tools, plus:

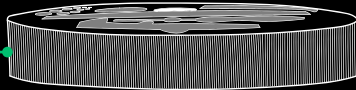
- Retractable Utility Knife
- Roll of Electrical Tape
- Lifting Sleeve
- Capacity for KWT-017-WP Central Wheel Post

How it works

1st Layer:
Impact Wrench
Holder



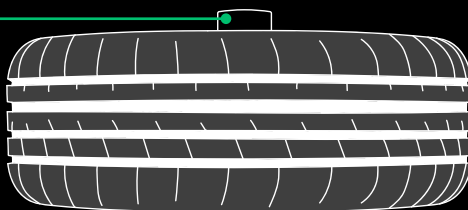
2nd Layer:
Hand Tool Kit



Lifting Sleeve



Spare Wheel
Central Post



Make Your Own
Layer Cake: Kit Builder
kielder.co

Car Preparation

- 1 Tow Rope:** 3.5m, rated to a maximum of 5 tonnes
- 2 3 Point Quick Release Wheel Strap:** Fully secures all the essential tools in the spare wheel
- 3 Foam Spacers:** Raise the position of the Spare Wheel Kit. 1 x Spacer height: 47mm
- 4 Wheel Post:** Strong, lightweight aluminium. Post height: 245mm, Weight: 0.5kg
- 5 Lifting Sleeve:** Fits over wheel post and allows for quick removal of Layer Cake System



KWT-017-TR	Tow Rope 3.5m
KWT-017-WS	3 Point Quick Release Wheel Strap
KWT-017-SP	Spacer pack (2pcs) for use with Layer Cake
KWT-017-WP	Spare Wheel Central Post
KWT-017-131-LS	Lifting Sleeve for Layer Cake



Mechanics Kneel Mat



Innovative iLock system allows for mats to be connected to create a larger work area or lay-mat

- 30mm thickness of professional quality EVA foam provides essential support and comfort
- Features carry handle and built-in storage space for sockets, nuts and accessories
- Water and oil resistant

KWT-318-01	Kneel Mat with iLock System (1pc)
KWT-318-02	Kneel Mat with iLock System (2pc)



Torque Wrenches

Rapid torque setting with exceptional feel

- Quick release lock collar for easy adjustment of required torque
- Positive action “click” when desired torque level is achieved
- All Kielder torque wrenches are tested and supplied with a certificate of calibration



KWT-208-01 **28-210Nm 1/2"** Professional Torque Wrench

KWT-208-02 **10-110Nm 3/8"** Professional Torque Wrench



Digital Tyre Pressure Gauge

- 0-200psi range, with unit selector switch for psi / bar / MPa / kg/cm²
- 330mm stainless hose, with push on connector
- 360° rotation of hose
- Release valve for accurate pressure setting
- Bright backlight & auto power off function
- Calibrated in the UK



KWT-355-01 **0-200psi** Digital Tyre Pressure Gauge

Hand Tools



A range of professional hand tools that perfectly complement the Kielder TYPE18 cordless 18v tool range. Essential tools that are the ideal addition to any set for repairs, service, maintenance work and more!



Kielder's new range of tools have been ergonomically designed to feel good in the hand. Soft grips for comfort, lightweight to reduce user fatigue, along with robust, solid build quality.



KWT-202-01	9pc Hex Key Set
KWT-202-01T	9pc Torx Key Set
KWT-205-01	Long Nose Pliers
KWT-203-01	Locking Grip Pliers
KWT-204-01	Adjustable Spanner
KWT-206-01	Precision Side Cutter
KWT-200-01	3/8" Ratchet Handle
KWT-200-03	1/2" Ratchet Handle
KWT-207-01	Hammer

KWT-202-01
9pc Colour Coded Long Hex Key Set (1.5, 2, 2.5, 3, 4, 5, 6, 8, 10mm)

KWT-200-03
1/2" Ratchet Handle 48T

KWT-200-01
3/8" Ratchet Handle 48T

KWT-202-01T
9pc Long Torx Key Set (T10, T15, T20, T25, T27, T30, T40, T45, T50)

KWT-203-01
7" (175mm) Locking Grip Pliers

KWT-207-01
16oz Ball Pein Hammer

KWT-204-01
8" (200mm) Adjustable Spanner 32mm Capacity, with Alligator Jaw

KWT-205-01
150mm / 6" Long Nose Pliers

KWT-206-01
125mm/5" Precision Side Cutter



9pc Screwdriver Set

- 9pc set of Phillips and Slot Head Screwdrivers; covers all sizes that are commonly used.
- Manufactured from high-grade Chrome Vanadium Steel to help prevent bending or snapping.
- Ergonomic handles with soft grip rubber and raised dimple design, for extra comfort and easily allows for more force to be applied.
- Magnetic black tips, for point of difference between screw and driver head.
- Handles feature a hole for hanging.



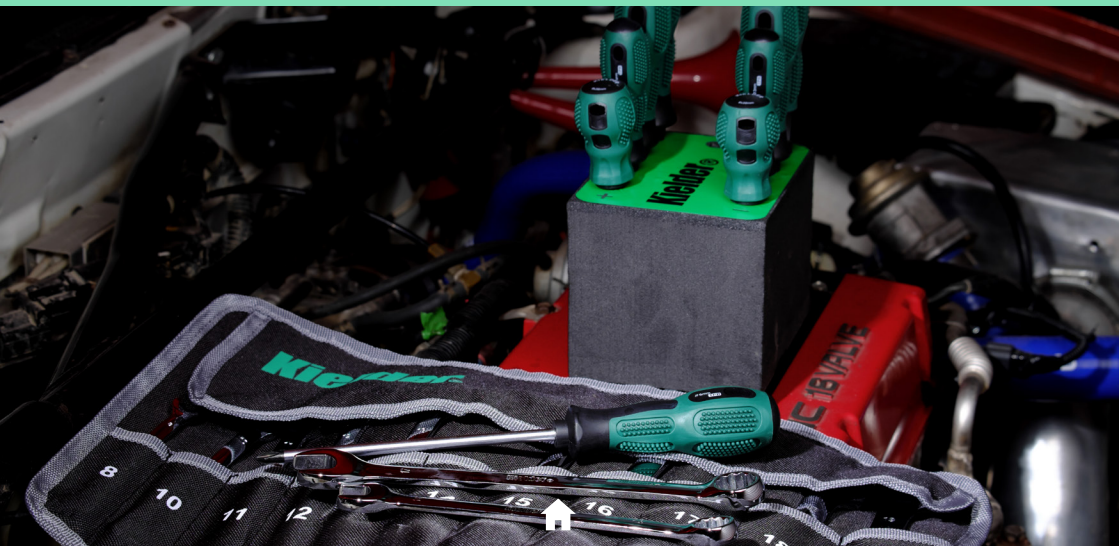
KWT-201-11 9pc Screwdriver Set

11pc Combination Spanner Set

- Set includes: 8, 10, 11, 12, 13, 14, 15, 16, 17, 18 & 19mm spanners
- Each spanner features open jaw and 12-point ring ends; two tools in one.
- Manufactured from high-grade Chrome Vanadium Steel with chrome mirror finish.
- Supplied in durable compact tool roll, with carry handle.
- Lifetime guarantee* on spanners.



KWT-209-01 11pc Combination Spanner Set

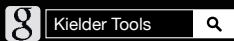




Kielder WT.

KIELDER WORKS TEAM

Kielder WT Ltd
Sheffield, UK
T: +44 (0)114 242 3794
E: tools@kielder.co
W: kielder.co



#TheMechanicsMatter



KWT-RBB22