

Please see reverse side for changing strings on slotted pegheads.

The right (and easy) way to change strings

Here's an easy way to attach your **Straight Up Strings** for so they install quickly, hold securely, do not slip, and can be removed easily. Follow these instructions for .009" to .039" strings. **Disregard these instructions for wound strings larger than .040"**. A simple 90° angle bend in the post hole is all that is needed to keep them from slipping.

Here's how you do it:

Step 1: Turn the tuning knob so the post's hole is pointed toward the truss rod cover.

Step 2: With one hand, insert the string straight into the post's hole while the other hand holds the string about 1/2" above the fretboard as shown in Fig. 1. (This excess string is what will later wind up on to the string post.)

Step 3: For the bass side strings, bring the tail of the string back around the post clockwise as shown in Fig. 2. For strings on the treble side, bring the tail of the string back around the post counterclockwise.

Step 4: Bring the tail of the string under the main portion of the string (Fig. 3), raise it up, and pull it toward the end of the peghead to cause the tail of the string to be locked in a "C" shape behind main portion of the string (Fig. 4 and Fig. 5).

Step 5: As soon as you begin to tighten the string up on to the string post, the tail of the string – where the "C" bend is – gets locked against the post by the string that is being wound onto the post. This provides for a secure locking of the string to the post, and enables fast and easy removal for the next string change.

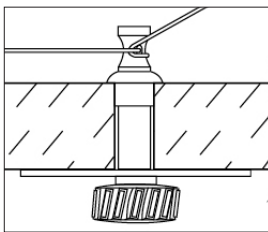


Fig. 5



Fig. 1



Fig. 2



Fig. 3



Fig. 4



Straight Up Strings...
every note of
every chord

STRAIGHT UP STRINGS

by
Siminoff
www.straightupstrings.com

Please see reverse side for changing strings on flat pegheads.
The right (and easy) way to change strings on slotted pegheads (Dobro®, et al.)

Here's an easy way to attach your **Straight Up Strings** for so they install quickly, hold securely, do not slip, and can be removed easily. Follow these instructions for .009" to .039" strings. **Disregard these instructions for wound strings larger than .040"**. A simple 90° angle bend in the post hole is all that is needed to keep them from slipping.

Here's how to do it:

Step 1: Insert ball end of string into tail-piece. Turn the tuning knob so the post's hole is pointed toward bottom of slot.

Step 2: Insert the string straight into the post's hole and pull it through until you remove most of the slack in the string. Now bring the tail of the string back up forward of the post (Fig. 1), and then bring the tail of the string under the main portion of the string as in Fig. 2.

Step 3: Now pull the tail of the string forward so that it locks under the main portion of the string as shown in Fig. 3.

Step 4: Hold a little tension on the main portion of the string as you wind the string up to pitch. The tail of the string will lock under the main portion of the string as shown in Fig. 4. Once the string is tightened, cut the tail of the string leaving about 2" of string protruding. This provides for a secure locking of the string to the post and enables fast and easy removal for the next string change.

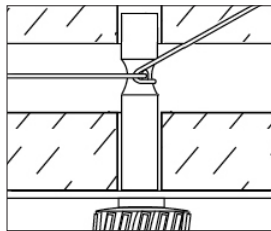


Fig. 5



Fig. 1

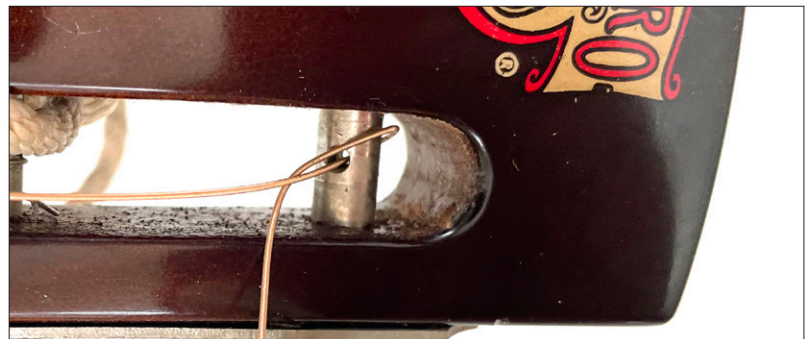


Fig. 2



Fig. 3



Fig. 4



Straight Up Strings...
every note of
every chord

STRAIGHT UP STRINGS

by
Siminoff
www.straightupstrings.com