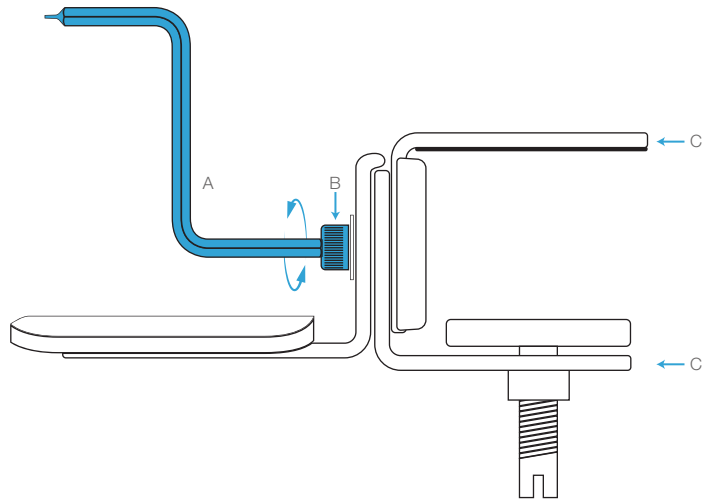


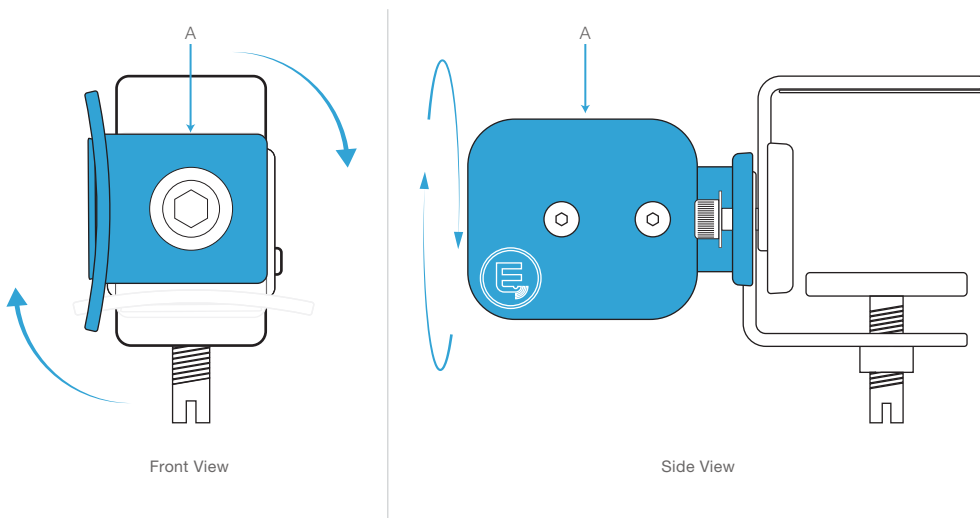
1 Unlock Clamp Arms

Use the tool provided **A** and turn the Central Bolt **B** anti-clockwise for about one and a half a turns, to loosen the clamping arms **C** ready for adjustment.



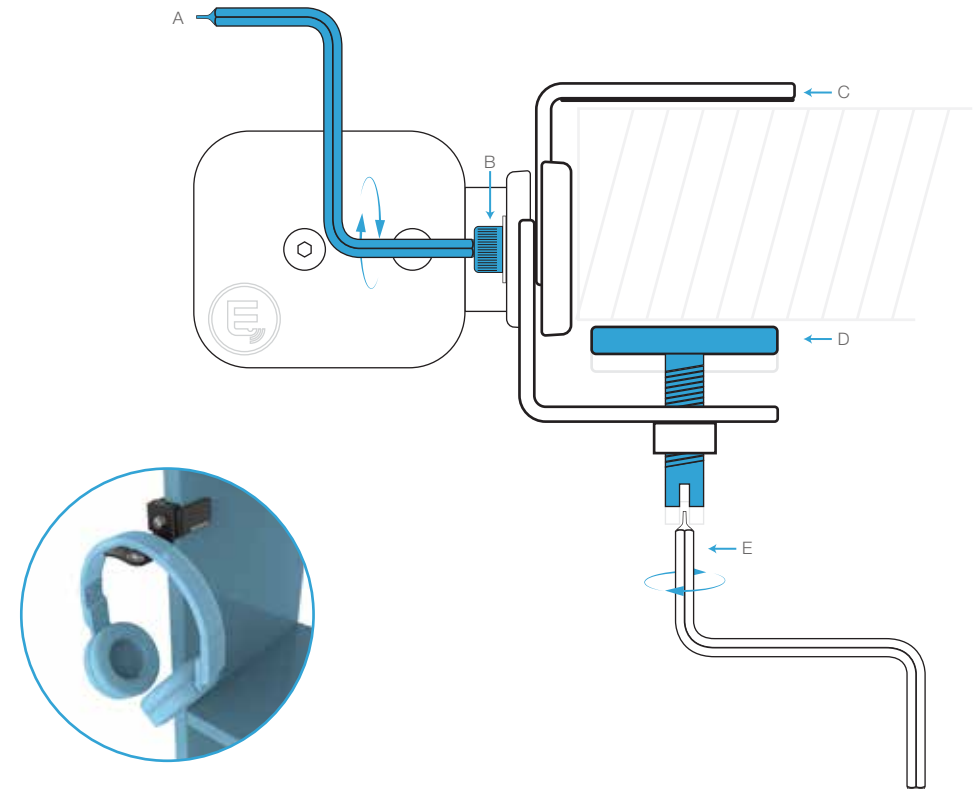
2 Rotate the Base Plate

Rotate the whole base plate section **A** round by 45 degrees until it looks like the image below



3 Tighten and Position the Clamp

Use the tool provided **A** and tighten the Clamp Arms **C** into position by turning the Central Bolt **B** clockwise until tight.



Now place the clamp onto desired surface and use the tool provided **A** and turn the Locking Bolt **D** clockwise until tight.

Tool (supplied)
Combined 4mm Allen/Hex Key
and flat head screwdriver

4mm Allen/Hex Key



Flat head screwdriver



BRAINWAVZ
HENGJA

BRAINWAVZ (Hong Kong) Unit B, 4/F Jumbo Industrial Building 189 Wai Yip Street, Kwun Tong, Hong Kong
support : help@yourbrainwavz.com

QUICK GUIDE **CLAMP ORIENTATION**

