

HEADPHONE USER GUIDE

Brainwavz warrants that this product shall be free from defects in material or workmanship for a period of 24 months from the date of purchase from an authorized Brainwavz distributor or reseller. Except where prohibited by applicable law, this warranty is non-transferable and is limited to the original purchaser. This warranty gives you specific legal rights, and you may also have other rights that vary under local laws.

- Do not use any earphones and headphones at excessively loud levels.
- Sealed eartips and lower volumes allow for longer periods of safe listening.
- Using earphones and headphones at high volumes or for extended periods of time (more than 1 hour period per day) can permanently damage your ears.
- Ringing in your ears or other discomfort can indicate that the music volume is too high.
- For safety reasons DO NOT use earphones and headphones while driving a car, biking, walking or operating machinery.
- Keep your earphones or headphones away from young children, this product includes small parts and cables which may create a choking hazard.



HEADPHONE

User Guide & Warranty Card

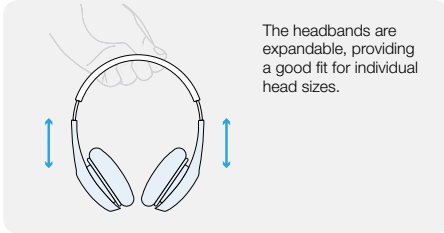
In case of any problems please contact us by email:

help@yourbrainwavz.com

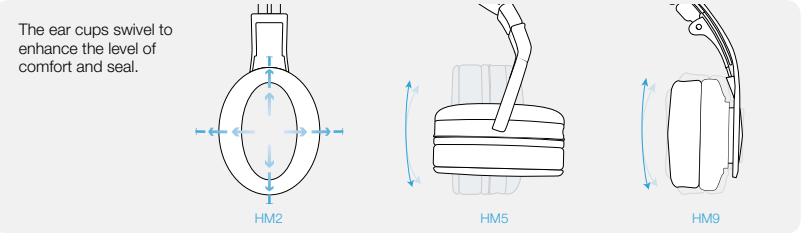


Fitting Guide (Images for illustration purposes - headphone model may differ)

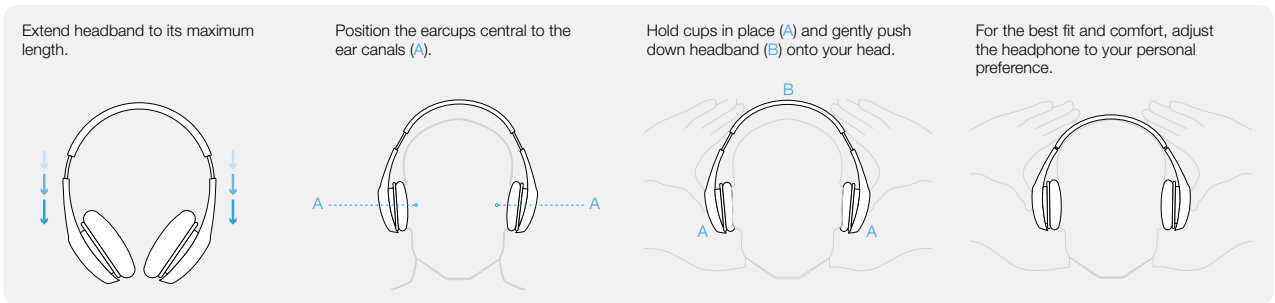
Retractable Headband



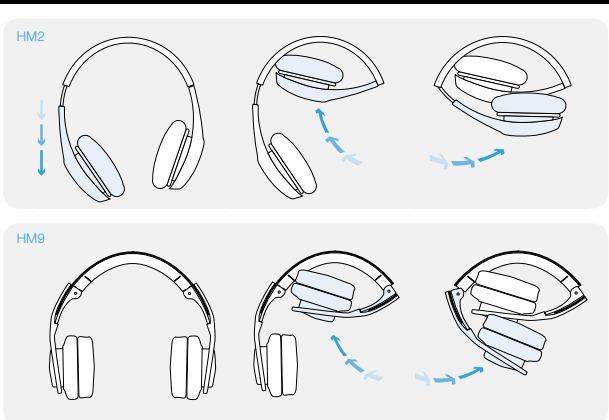
Pivoting Ear Cups



Fitting Headphones

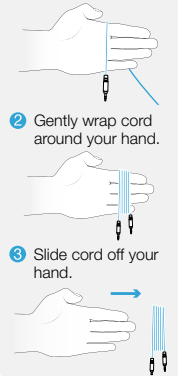


Foldable Headphones (Images for illustration purposes - check if purchased model is foldable)

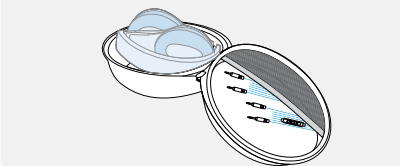


Storage

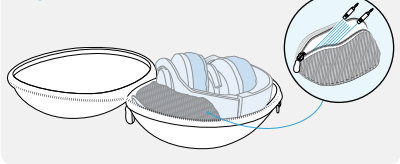
- 1 Lay cords over hand.
- 2 Gently wrap cord around your hand.
- 3 Slide cord off your hand.



Oval Case with Accessory Pocket



Large Case with Removable Pouch



HM2 Microphone / Remote

i The user guide in this section only applies to the detachable cable with in-line control for Brainwavz HM2.

REJECT CALL
Press & hold for 2 seconds

ANSWER CALL
1 quick press

END CALL
1 quick press

VOLUME CONTROL
Slide up and down

PAUSE - 1 quick press
PLAY - 1 quick press

i SONY Smartphones only
NEXT SONG
2 quick presses
PREVIOUS SONG
3 quick presses

VOLUME CONTROL
Slide up and Down

In-Line Control functions may vary, depending on brand or model being connected to.

TO HEADPHONES TO DEVICE

HM9 Microphone / Remote

i The user guide in this section only applies to the detachable cable with in-line control for Brainwavz HM9.

REJECT CALL
Press & hold for 2 seconds

ANSWER CALL
1 quick press

END CALL
1 quick press

PAUSE - 1 quick press
PLAY - 1 quick press

i SONY Smartphones only
NEXT SONG
2 quick presses
PREVIOUS SONG
3 quick presses

VOLUME CONTROL
Slide up and Down

In-Line Control functions may vary, depending on brand or model being connected to.

TO HEADPHONES TO DEVICE

HM5 Earpads Exchangeable

i This section of the user guide only applies to the detachable ear cup for Brainwavz HM5.

With a simple twist the ear pad mounting ring can easily be removed to replace or exchange the earpads.

i NOTE:
Do not use force to remove the earpad, if the mounting ring can not be removed with a simple twist it may not be replaceable

Cleaning & Care

i ONLY clean headphones when detached from any audio device or mobile phone!

- If possible, not glued on, carefully remove the earpads from the headphone unit.
- Use a damp (NOT wet) cloth and wipe headphone unit clean.
- Use a gentle cleaner, like soap and warm water, e.g. small amount of dish washing detergent and water.
- Use a gentle cloth with just a small amount of the soap mixture.
- If there is a lot of dirt or dust on the headphones, try brushing them gently with a dry toothbrush.

IMPORTANT

- DO NOT USE too much soap.
- DO NOT USE heavy duty cleaner.
- DO NOT USE too much water.
- NEVER submerge headphones in water, it will damage the wiring.
- NEVER put headphones under running water, not even for just a second.

Brainwavz Model: Date of Purchase RMA/Order Number:

Your Name

Your Email Address

Your Mailing Address

Vendor

Descriptions of Problem