

IN-EAR EARPHONES USER GUIDE

Brainwavz warrants that this product shall be free from defects in material or workmanship for a period of 24 months from the date of purchase from an authorized Brainwavz distributor or reseller. Except where prohibited by applicable law, this warranty is non-transferable and is limited to the original purchaser. This warranty gives you specific legal rights, and you may also have other rights that vary under local laws.

- Do not use any earphones and headphones at excessively loud levels.
- Sealed eartips and lower volumes allow for longer periods of safe listening.
- Using earphones and headphones at high volumes or for extended periods of time (more than 1 hour period per day) can permanently damage your ears.
- Ringing in your ears or other discomfort can indicate that the music volume is too high.
- For safety reasons DO NOT use earphones and headphones while driving a car, biking, walking or operating machinery.
- Keep your earphones or headphones away from young children, this product includes small parts and cables which may create a choking hazard.



EARPHONES

User Guide & Warranty Card

In case of any problems please contact us by email:

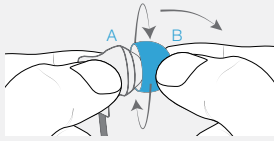
help@yourbrainwavz.com



Fitting Guide

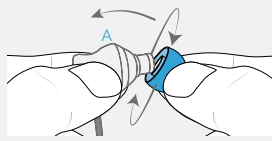
Removing Silicone Ear Tips

Hold earphone body tight **A**, pinch tip with other hand **B**, gently twist left & right while pulling tip in a downward motion.



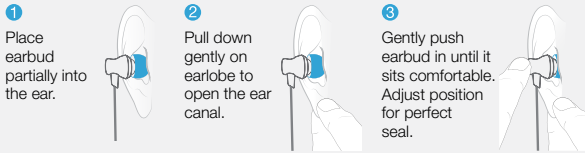
Fitting Silicone Ear Tips

Hold earphone body tight **A**, offer tip to nozzle at 45° angle, twist left and right as you gently push tip forward.



Straight-In Style Earphones

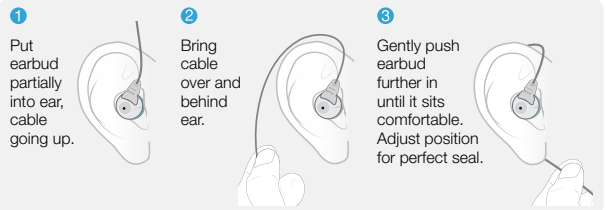
- 1 Place earbud partially into the ear.
- 2 Pull down gently on earlobe to open the ear canal.
- 3 Gently push earbud in until it sits comfortably. Adjust position for perfect seal.



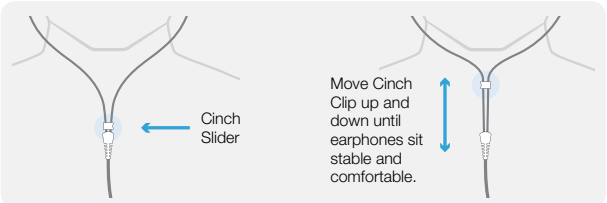
i Place correct earphone head (marked with L and R) into LEFT and RIGHT ear.

Over-The-Ear Style Earphones

- 1 Put earbud partially into ear, cable going up.
- 2 Bring cable over and behind ear.
- 3 Gently push earbud further in until it sits comfortably. Adjust position for perfect seal.

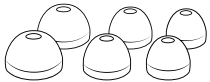


Cinch Cord



Silicone Ear Tips

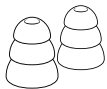
For added comfort and an improved sound experience, it is recommended to try the different silicone tips provided. Please note that the difference in size, shape and hardness of the silicone tips may affect the sound quality and experience.



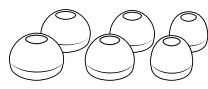
Standard Tip - Narrow Hole (S, M, L)



Bi-Flange Tips



Tri-Flange Tips



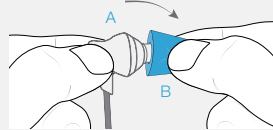
Standard Tip - Wide Hole (S, M, L)

i The silicone tips provided may vary, depending on the purchased earphone model.

Comply™ Premium Tips

Removing Comply™ Tip

Hold earphone body tight **A**, pinch tip firmly with other hand **B**, gently pull tip back in a downward motion.



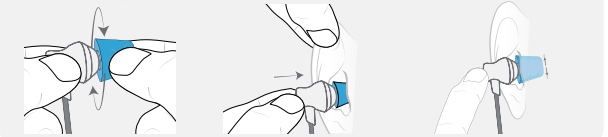
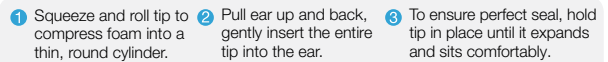
Fitting Comply™ Tips

Hold earphone body tight **A**, offer tip to nozzle at 45° angle, gently push tip up and forward onto nozzle.



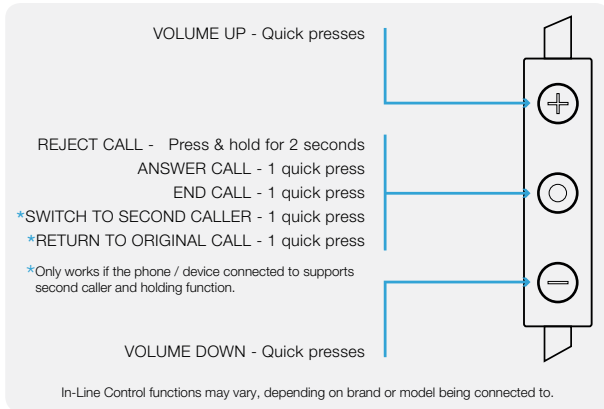
Inserting Comply™ Tips

- 1 Squeeze and roll tip to compress foam into a thin, round cylinder.
- 2 Pull ear up and back, gently insert the entire tip into the ear.
- 3 To ensure perfect seal, hold tip in place until it expands and sits comfortably.



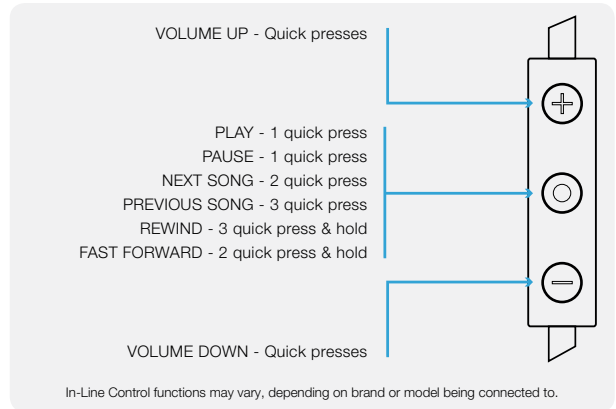
Phone Call Controls

i Only applies to earphones with in-line control, depending on the purchased model it may not be equipped with in-line control.



Media Controls

i Only applies to earphones with in-line control, depending on the purchased model it may not be equipped with in-line control.



Cleaning & Care

i ONLY clean earphones when detached from any audio device or mobile phone!

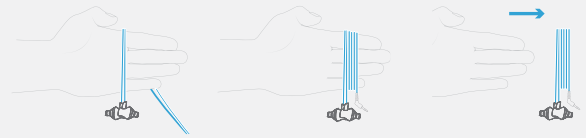
- Remove silicone tips from earphones and clean them separately.
- Ensure silicone tips are 100% dry before re-using them with your earphones.
- Use a gentle cleaner, like soap and warm water, e.g. small amount of dish washing detergent and water.
- Use a gentle cloth with just a small amount of the soap mixture.
- If there is a lot of dirt or dust on the earphones, try brushing them gently with a dry toothbrush.

IMPORTANT

- DO NOT USE too much soap.
- DO NOT USE heavy duty cleaner.
- DO NOT USE too much water.
- NEVER submerge earphones in water. It will damage the wiring.
- NEVER put earphones under running water, not even for just a second.

Safe Storage

- Lay earphones over hand as shown.
- Wrap cord around your hand, without force or pressure.
- Gently slide wrapped earphones off your hand.



- Secure cables with the Velcro Cable Tie.
- Place earphones into hard case.
- Close and zip-up the carry case.



i Depending on the earphone model, the hard case may not be included. Earphone hard cases can also be purchased individually.

Brainwavz Model: Date of Purchase RMA/Order Number:

Your Name

Your Email Address

Your Mailing Address

Vendor

Descriptions of Problem

To facilitate warranty, please contact the authorized vendor the product was purchased from.