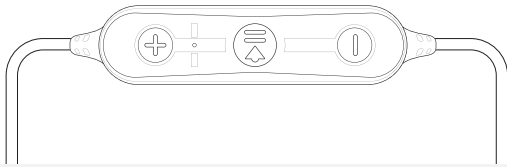


## BLU SERIES USER GUIDE



### Warranty + Safety Guidelines

Brainwavz warrants that this product shall be free from defects in material or workmanship for a period of 24 months from the date of purchase from an authorized Brainwavz distributor or reseller. Except where prohibited by applicable law, this warranty is non-transferable and is limited to the original purchaser. This warranty gives you specific legal rights, and you may also have other rights that vary under local laws.

- Do not use any earphones and headphones at excessively loud levels.
- Sealed eartips and lower volumes allow for longer periods of safe listening.
- Using earphones and headphones at high volumes or for extended periods of time (more than 1 hour period per day) can permanently damage your ears.
- Ringing in your ears or other discomfort can indicate that the music volume is too high.
- For safety reasons DO NOT use earphones and headphones while driving a car, biking, walking or operating machinery.
- Keep your earphones or headphones away from young children, this product includes small parts and cables which may create a choking hazard.



BLUETOOTH EARPHONES

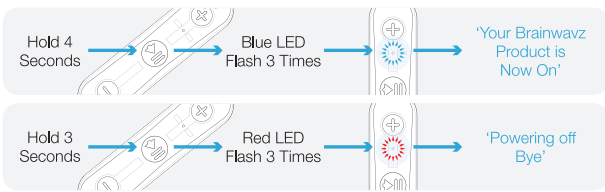
User Guide & Warranty Card

In case of any problems please contact us by email:

[help@yourbrainwavz.com](mailto:help@yourbrainwavz.com)

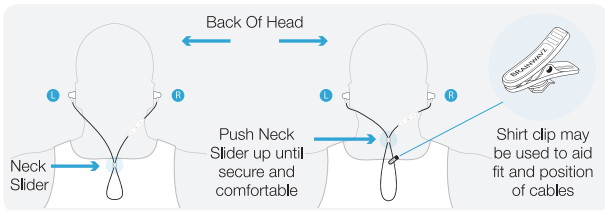


### Power On - Power Off



### Using the Neck Slider & Shirt Clip ( For securing earphones during use ).

Place correct earphone into the left & right ear, each head unit is marked accordingly.



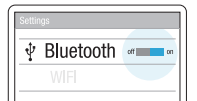
### Pairing ( Procedure may differ for some devices ).

1 Engage PAIRING mode (Ensure headset is OFF before proceeding).

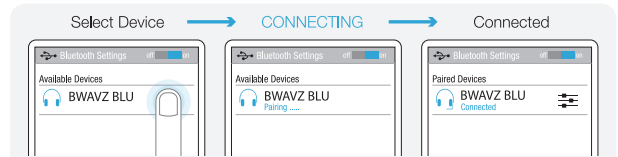


2 Activate your device's Bluetooth mode to find your headset.

Please refer to your phone/device manual on how to activate Bluetooth and "pair" devices.



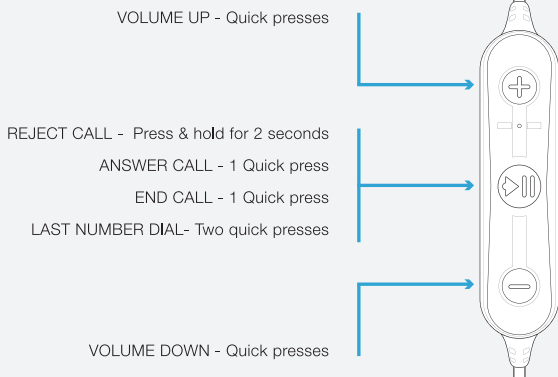
3 Select your device to enable connection.



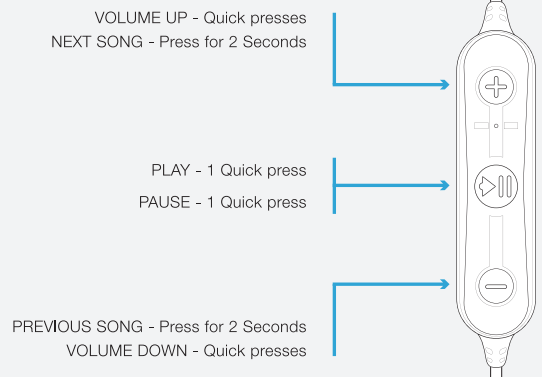
If connection fails repeat steps 1 - 3 (Procedure may differ for some devices).

Pairing only needs to be done once per device.

### Phone Call Controls

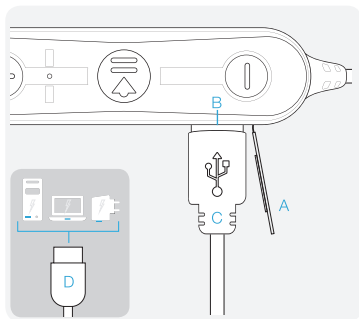


### Media Controls



## Charging

1 Lift the Cover **A** on the side of the in-line remote unit to expose the USB socket **B**.



2 Plug the small end of the USB charger cable **C** into the USB socket **B**.

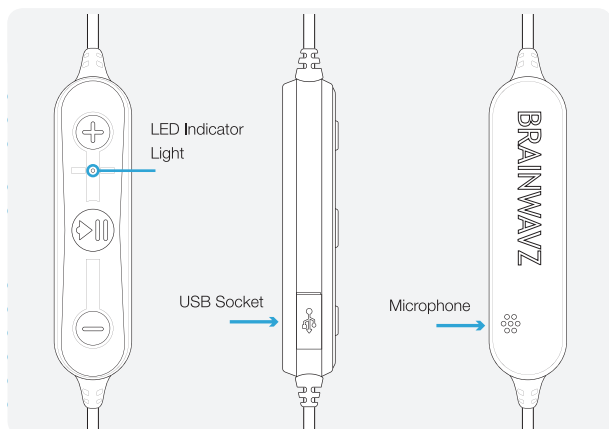
3 Plug in the large end **D** into a computer USB socket or power socket.

RED LED: Charging

BLUE LED: Charging Complete



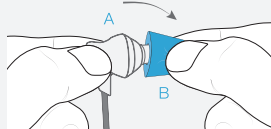
## Remote Control Unit



## Comply™ Premium Tips Guide

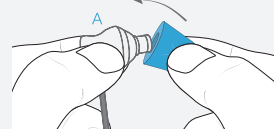
### Removing Comply™ Tip

Hold earphone body tight **A**, pinch tip firmly with other hand **B**, gently pull tip back in a downward motion.



### Fitting Comply™ Tips

Hold earphone body tight **A**, offer tip to nozzle at 45° angle, gently push tip up and forward onto nozzle.

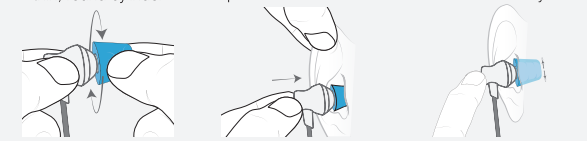


### Inserting Comply™ Tips

1 Squeeze and roll tip to compress foam into a thin, round cylinder.

2 Pull ear up and back, gently insert the entire tip into the ear.

3 To ensure perfect seal, hold tip in place until it expands and sits comfortably.



## Specifications

Bluetooth Version:	4.1
Chipset:	CSRBC8645
Profiles:	HFP, HSP, A2DP
Pairing:	Single & Dual Pairing
Operating Range:	up to 10 m / 30 ft
Noise Cancellation:	CVC Echo / Noise
Voice Prompt:	Yes
Battery:	70 mAh
Play / Standby Time:	8 - 10 Hours / 110 Hours
Charge Time:	~2 Hours

Design and Specifications are subject to change without notification. Visit [www.brainwavzaudio.com](http://www.brainwavzaudio.com) for latest information on all Brainwavz products.

Brainwavz Model:  Date of Purchase     RMA/Order Number:

Your Name

Your Email Address

Your Mailing Address

Vendor

Descriptions of Problem