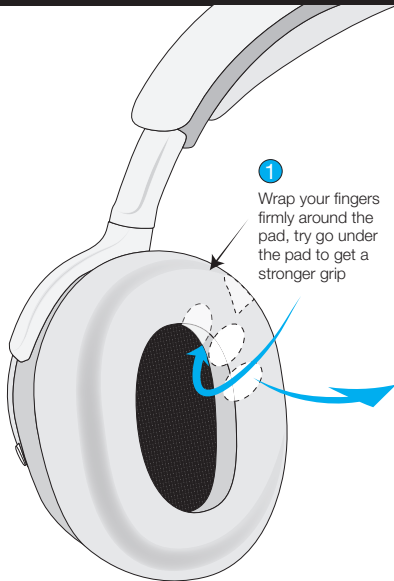


BRAINWAVZ[®]

EARPADS FOR STEELSERIES ARCTIS NOVA PRO WIRELESS INSTALLATION GUIDE

Remove Stock Pads



NOTE

The stock pad and plastic mounting ring are one piece



2

Pull the earpads in a forward and sideways motion

You may hear multiple “clicks” as the pad releases from the internal tab system.

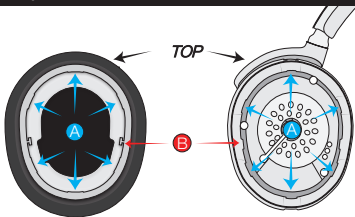
NOTE

Hold the headphones steady during the removal procedure.

Get To Know The Earpad

EARPAD

There are 6 mounting holes **A** on the inner edge of the earpad, these match the clips on the head unit.

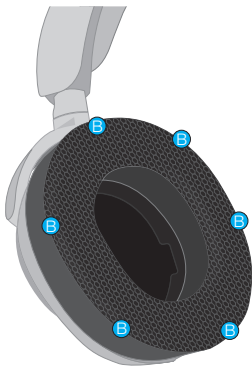


HEADSET

There are also two key guides **B** to help position the earpad correctly when installing onto the head unit.

Install The Earpad

- 1 Offer up the earpad to the head unit, aligning the two clips on the pad to the corresponding holes on the headset **A**.



- 2 With the earpad in place push firmly on each of the clip locations **B** you will hear several clicks as the pad locks into place.
- 3 Once the earpad is fitted gently pull on the pad to ensure all clips are tight, and there are no air gaps - repeat with the second pad and enjoy.