

# BRAINWAVZ®

## INSTALLATION GUIDE SCREWS

### Safety Guidelines

- Before screwing the product into place ensure your chosen surface is solid, dry and secure.
- Always use the screw caps / washers provided.
- DO NOT over-tighten screws.
- Power tools are required for installation, if in doubt seek the help of a professional.
- Only use provided mounting hardware when installing Brainwavz products.

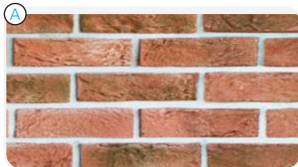


In case of any problems please contact us by email:

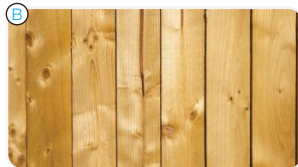
[help@yourbrainwavz.com](mailto:help@yourbrainwavz.com)



### Recommended mounting surfaces



(A) Brick walls - Ensure walls are solid and corrosion free before installation. Only install into the solid brick, not into the mortar.



(B) Wood - Ensure wood is solid. You may need alternative screws if installing onto shelves or cupboards as supplied screws may be too long.



(C) Concrete walls - Ensure walls are solid and corrosion free before installation. Only install into the solid concrete, not into the mortar or crumbling surfaces.

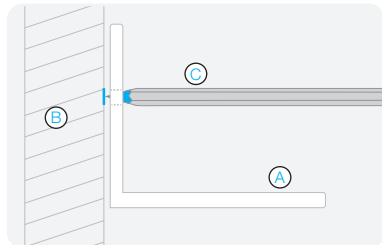


(D) wallpapered walls - Do not install on loose, crumbling surfaces. If in doubt consult a professional for advice and installation.

## Screws Mounting Guide

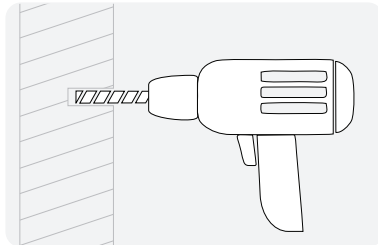
*For illustration only - your product may differ from one shown*

### 1 Mark precise location:



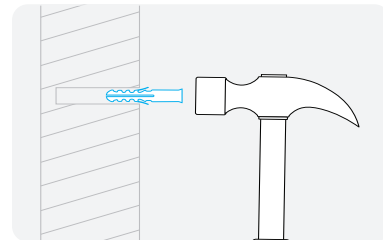
Hold your product (A) on the wall (B) and use a sharp pencil (C) to mark location of the screw holes.

### 2 Carefully drill mounting hole:



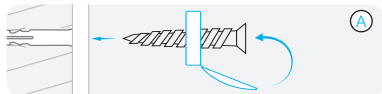
Carefully drill the holes into your wall, deep enough to accommodate the supplied screws.

### 3 Insert plastic wall plugs:

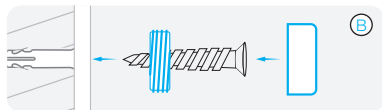


Use a small hammer to gently tap the supplied wall plugs into the hole.

### 4 If included, install the washers/caps:

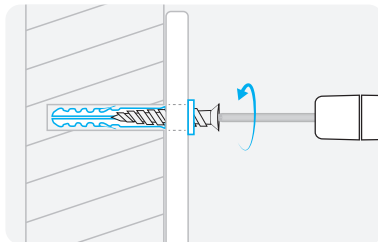


(Type A) All-in-one washer and flip-up cap



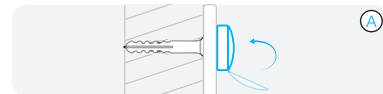
(Type B) Two-piece threaded metal washer and decorative twist-on cap.

### 5 Screw product to the wall:

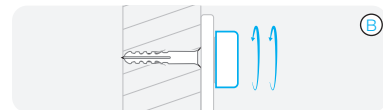


Use a phillips/cross head screwdriver to tighten the screw until you feel resistance, do not over-tighten.

### 6 If screw caps are provided:



(Type A) Flip up the attached cap until clicks into place.



(Type B) Twist the decorative metal cap onto the threaded metal washer.