

IN-EAR EARPHONES USER GUIDE

Brainwavz warrants that this product shall be free from defects in material or workmanship for a period of 12 / 24 months (see packaging for details) from the date of purchase from an authorized Brainwavz distributor or reseller. Except where prohibited by applicable law, this warranty is non-transferable and is limited to the original purchaser. This warranty gives you specific legal rights, and you may also have other rights that vary under local laws.

- Do not use any earphones or headphones at excessively loud levels.
- Sealed eartips and lower volumes allow for longer periods of safe listening.
- Using earphones and headphones at high volumes or for extended periods of time (more than 1 hour period per day) can permanently damage your ears.
- Ringing in your ears or other discomfort can indicate that the music volume is too high.
- For safety reasons DO NOT use earphones and headphones while driving a car, biking, walking or operating machinery.
- Keep your earphones or headphones away from young children, this product includes small parts and cables which may create a choking hazard.



EARPHONES

User Guide & Warranty Card

In case of any problems please contact us by email:

help@yourbrainwavz.com

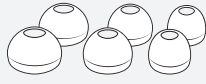


1 . Choosing the Correct Ear Tips

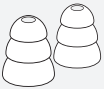
The first step to getting the best performance from your new Brainwavz earphones is selecting the correct eartip. We provide a selection for you to choose from, pick the eartip that is comfy and creates a tight seal to ensure the best sound quality.



Standard Tip - Narrow Hole (S, M, L)



Standard Tip - Wide Hole (S, M, L)



Tri-Flange Tips



Bi-Flange Tips



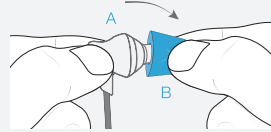
Comply™ Foam Tips

i The tips provided may vary, depending on the earphone model received. Choosing the wrong tip may cause discomfort and will impair the sound quality.

2 . Applying Ear Tips

Removing Comply™ Tip

Hold earphone body tight **A**, pinch tip firmly with other hand **B**, gently pull tip back in a downward motion.



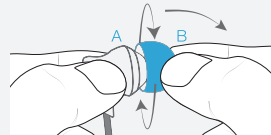
Fitting Comply™ Tips

Hold earphone body tight **A**, offer tip to nozzle at 45° angle, gently push tip up and forward onto nozzle.



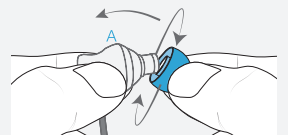
Removing Silicone Ear Tips

Hold earphone body tight **A**, pinch tip with other hand **B**, gently twist left & right while pulling tip in a downward motion.



Fitting Silicone Ear Tips

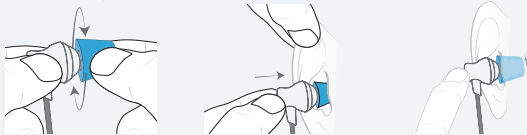
Hold earphone body tight **A**, offer tip to nozzle at 45° angle, twist left and right as you gently push tip forward.



3 . Fitting Guide

Inserting Comply™ Tips - Special instructions for the correct use of Comply Tips.

- 1 Squeeze and roll tip to compress foam into a thin, round cylinder.
- 2 Pull ear up and back, gently insert the entire tip into the ear.
- 3 To ensure perfect seal, hold tip in place until it expands and sits comfortably.



Straight-In Style Earphones - How to wear earbuds with standard cord type.

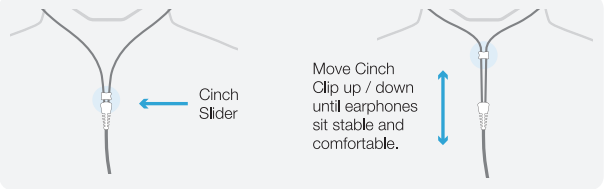
- 1 Place earbud partially into the ear.
- 2 Pull down gently on earlobe to open the ear canal.
- 3 Gently push earbud in until it sits comfortably. Adjust position for perfect seal.

i Place correct earphone head (marked with L and R) into LEFT and RIGHT ear.

Over-The-Ear Style Earphones - Ensure correct fitting for best performance and comfort.

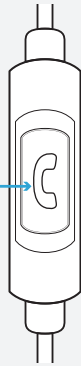
- 1 Place earbud partially into ear, cable going up.
- 2 Bring cable over and behind ear.
- 3 Gently push earbud further in until it sits comfortably. Adjust position for perfect seal.

Using The Cinch Cord (if included) - Use cinch slider for a secure fit and reduce vibration.



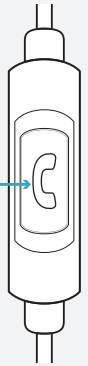
Phone Call Controls

- REJECT CALL - Press & hold for 2 seconds
- ANSWER CALL - 1 Quick press
- END CALL - 1 Quick press
- MUTE CALL - 1 Long press
- UN-MUTE CALL - 1 Long press



Media Controls

- **LAUNCH ASSISTANT (Google/Siri)
Press & Hold while on desktop or lock screen
- PLAY - 1 Quick press
- PAUSE - 1 Quick press
- * NEXT SONG - 2 Quick presses
- * PREVIOUS SONG - 3 quick presses



- * These functions may differ depending upon the media application being used.
- ** Assistant launch function may differ depending on phone model, version or apps installed.



Only applies to earphones with in-line microphone and control unit, depending on the purchased model it may not be equipped with his feature.
In-Line control functions may vary depending on type of device, brand or model being connected to, please consult your devices user guide for any instructions related to your unit.
Functions may be affected if using third party hardware with your device, e.g. a portable amplifier, dongle etc - check with manufacturer for more information relating to your device.

Cleaning & Care

i ONLY clean earphones when detached from any audio device or mobile phone!

- Remove silicone tips from earphones and clean them separately.
- Ensure silicone tips are 100% dry before re-using them with your earphones.
- Use a gentle cleaner, like soap and warm water, e.g. small amount of dish washing detergent and water.
- Use a gentle cloth with just a small amount of the soap mixture.
- If there is a lot of dirt or dust on the earphones, try brushing them gently with a dry toothbrush.

IMPORTANT

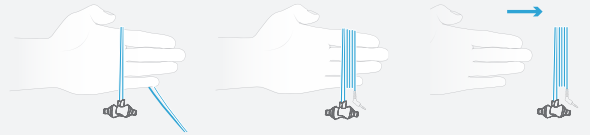
- DO NOT USE too much soap.
- DO NOT USE heavy duty cleaner.
- DO NOT USE too much water.
- NEVER submerge earphones in water. It will damage the speaker driver.
- NEVER put earphones under running water, not even for just a second.

In case of any problems please contact us by email:
help@yourbrainwavz.com



Safe Storage

- 1 Lay earphones over hand as shown.
- 2 Gently wrap the cord around your fingers.
- 3 Slide the earphones off your hand.



- 4 Secure cables with the velcro cable tie.
- 5 Place earphones into hard case.
- 6 Close and zip-up the hard case.



Depending on the earphone model, the hard case may not be included.
Earphone hard cases can also be purchased separately from www.brainwavzaudio.com

Brainwavz Model: Date of Purchase RMA/Order Number:

Your Name

Your Email Address

Your Mailing Address

Vendor

Descriptions of Problem