

BRAINWAVZ[®]

INSTALLATION GUIDE VHB TAPE & SCREWS

Safety Guidelines

- ❗ Screws are highly recommended when mounting heavy or fragile items.
- When mounting onto hollow/cavity surfaces we recommend using 3M™ VHB™ tape and screws for extra security.
- Before screwing the product into place ensure your chosen surface is solid, dry and secure.
- Take care when removing 3M™ VHB™ tape from any surface as it may cause damage.
- Always use the screw caps provided - DO NOT over-tighten screws.



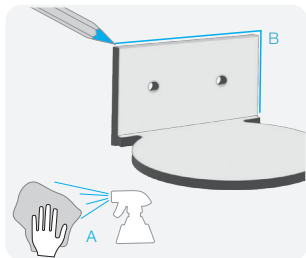
In case of any problems please contact us by email:

help@yourbrainwavz.com

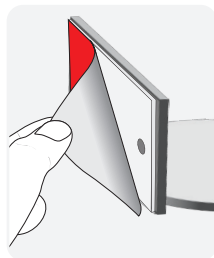


3M™ VHB™ Tape Mounting Guide

For illustration only - your product may differ from one shown

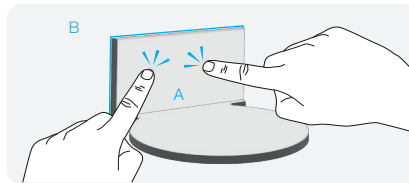


Thoroughly clean and prepare surface before installation (A). Mark the desired location for your Brainwavz product (B).

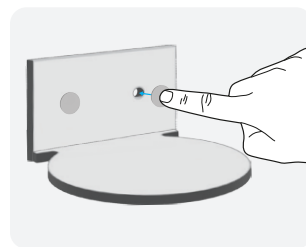


Peel the red backing off the 3M™ VHB™ tape.

Apply pressure by pushing the product (A) hard onto the surface (B). This will help to develop high-strength adhesion.



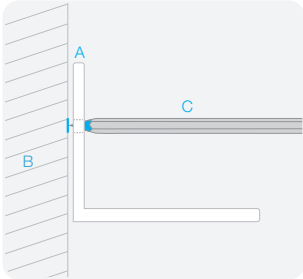
To ensure a more secure bond has been achieved, do not use your new hanger for at least 24 hours after installation or the hanger may fall down. ❗ **Bond strength at 20 minutes is 50%, 24 hours is 90% and 72 hours is 100%.**



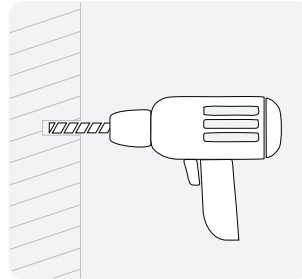
When your product is in place and safely hung, use the small sticky dots provided to cover over the unused screw holes.

Screws Mounting Guide

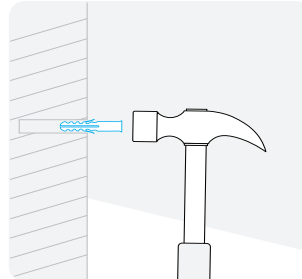
For illustration only - your hanger may differ from one shown



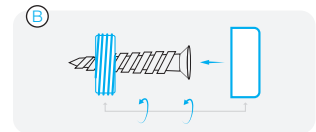
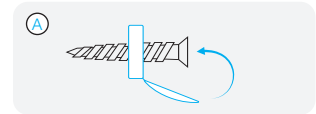
Hold your product (A) on the wall (B) and use a sharp pencil (C) to mark location of the screw holes.



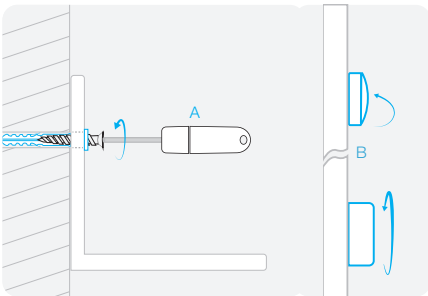
Carefully drill the holes into your wall, no deeper than 30 mm.



Use a small hammer to gently tap the supplied wall plugs into the hole.



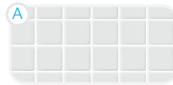
If included, install the washer/caps:
 (Type A) All-in-one washer and flip-up cap.
 (Type B) Two-piece metal washer and twist-on cap.



Use a phillips/cross head screwdriver (A) to tighten the screw until you feel resistance, do not over-tighten. If screw caps (B) are provided, attach them now.

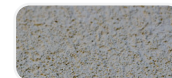
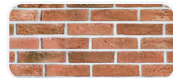
Recommended mounting surfaces

3M™ VHB™
TAPE



(A) Ceramic Tiles (B) Smooth Marble (C) Smooth Metal (D) Glass - Do not install on wallpapered, loose, damp or wet surfaces.

SCREW
MOUNT



(A) Brick walls (B) Wood (C) Concrete (D) wallpapered walls - Do not install on loose, crumbling surfaces. If in doubt consult a professional for advice and installation.