



1969 CAMARO : REAR BOWTIE BADGE

INSTALLATION INSTRUCTIONS

#69LC-R-01-SET-N

1969 CAMARO : REAR BOWTIE BADGE : #69LC-R-01-SET-N

INSTALLATION INSTRUCTIONS

*Thank you for purchasing this Steinhauser Design product!
We are proud to have created this product for your enjoyment by making it exclusive and well designed.*

*** IMPORTANT INFORMATION ***

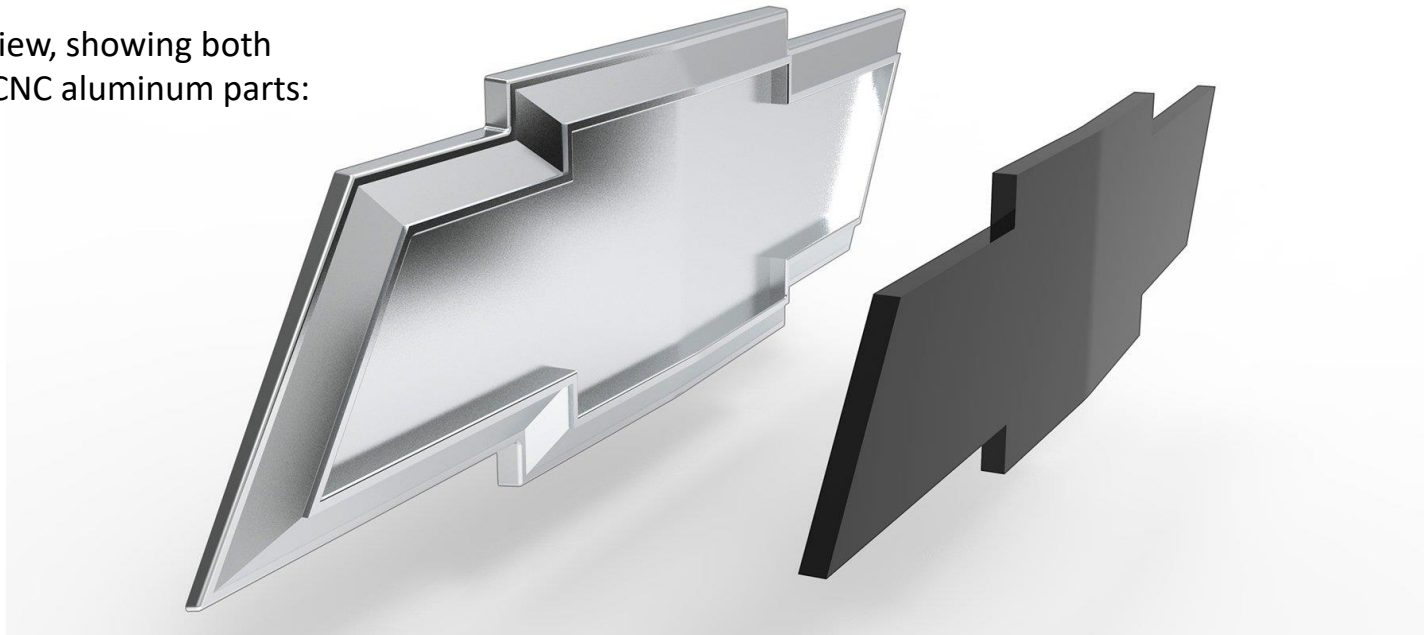
- CNC Aluminum parts are RAW/Uncoated in order to make personalization easier. However, it's **highly recommended** to properly coat the pieces before installation, in order to protect from the elements.
- These parts **WILL** fit the standard 1969 Camaro rear tail panel (Base, SS, RS/SS, Z28, etc)
- Carefully check the parts list (see *page_03*) to ensure all parts are included.
- Thoroughly read through each step of the installation instructions prior to starting any installation or assembly procedures.
- Contact Steinhauser Design if you have any concerns or questions, using the contact info listed at the bottom of each page.

1969 CAMARO : REAR BOWTIE BADGE : #69LC-R-01-SET-N

INSTALLATION INSTRUCTIONS

PARTS LIST OVERVIEW

Exploded view, showing both individual CNC aluminum parts:



Parts Description	Part #	Qty	QC
CNC Machined Aluminum: Main Bowtie Piece	69LC-R-01-A-N	1	
CNC Machined Aluminum: Bowtie Insert Piece	69LC-R-01-B-N	1	
3M Double Sided Tape #06385 (1/4" wide x .030" thick)		1	
3M Double Sided Tape #06397 (1/2" wide x .060" thick)		1	
3M Adhesion Promoter Wipes #06396		2	



1969 CAMARO : REAR BOWTIE BADGE : #69LC-R-01-SET-N

INSTALLATION INSTRUCTIONS

RECOMMENDED SUPPLIES

TOOL DESCRIPTION	PURPOSE
3M Painters Tape or similar	To create guidelines for bowtie installation
Grease and Wax Remover	Cleaning, prepping the parts and vehicle for installation
Wypall Clean Towels or similar	Application of the grease and wax remover
Nitrile gloves or similar	Use when applying the adhesion promoter
X-acto Knife or razor blade	Trimming the 3M tape after applied to parts

1969 CAMARO : REAR BOWTIE BADGE : #69LC-R-01-SET-N

INSTALLATION INSTRUCTIONS

PREPARE BOWTIE FOR INSTALL:

- As stated on *page_02*, properly coat the aluminum parts with paint, ceramic coat, or some other form of protectant prior to installation. Mask off back sides when coating.

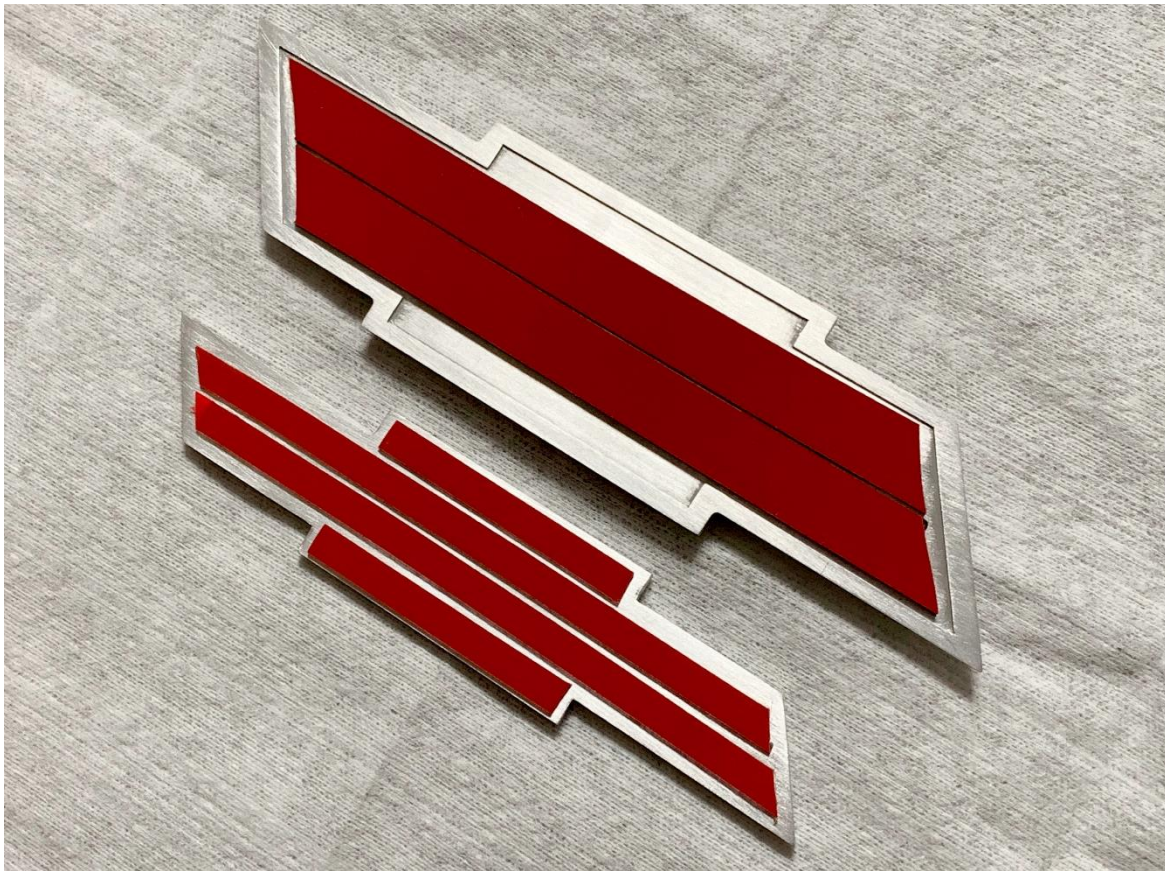


- Clean back side of both aluminum parts with grease and wax remover. Make sure the surfaces are dry and dust free before next step.
- Using just one of the adhesion promoter packets, very carefully apply promoter to back side surfaces of both aluminum parts. (Recommended to use nitrile gloves for this step. **DO NOT** get promoter on visible surfaces as it will permanently damage/etch the coating or surface of the part.)
- Carefully apply some promoter to “inset” area on front side of main bowtie piece as well (this is where the bowtie insert piece will attach).

1969 CAMARO : REAR BOWTIE BADGE : #69LC-R-01-SET-N

INSTALLATION INSTRUCTIONS

PREPARE BOWTIE FOR INSTALL:



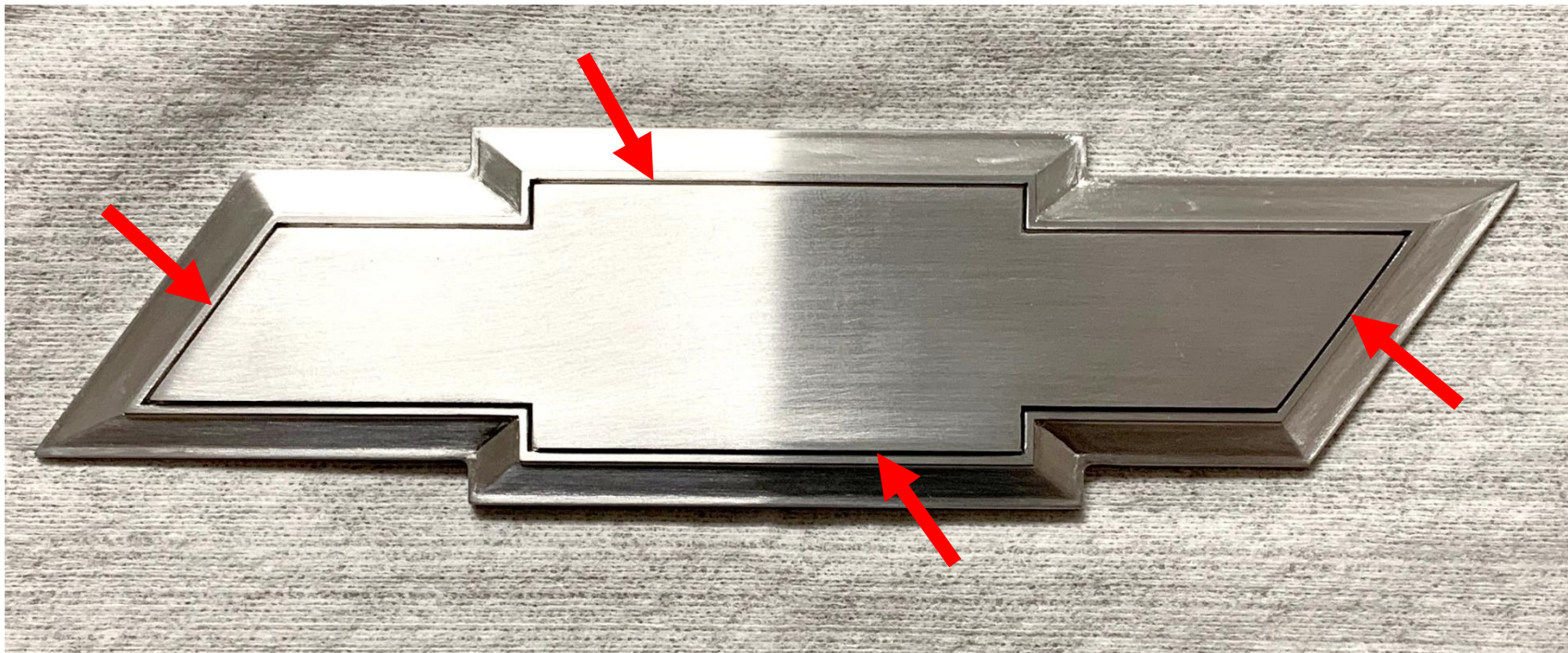
- Apply the ½” wide **3M tape #06397** to back side of the main bowtie piece. As shown in image, make sure the tape stays within the ‘recessed’ portion of the back side in order to achieve an optimal installation.
- Apply the ¼” wide **3M tape #06385** to back side of the bowtie insert piece. This part does not have a recess, so leave a 2-3mm gap around perimeter of the part, as shown in image.
- Trim tape sections as necessary with an X-acto blade.

1969 CAMARO : REAR BOWTIE BADGE : #69LC-R-01-SET-N

INSTALLATION INSTRUCTIONS

PREPARE BOWTIE FOR INSTALL:

- Attaching the bowtie insert to the main bowtie piece.
- Pull all of the red masking off the 3M tape sections that are on back side of bowtie insert.
- Very carefully seat the insert piece into the main bowtie, make sure the gaps are the same all around the insert piece, as shown in image below. Press firmly to ensure good adhesion.



1969 CAMARO : REAR BOWTIE BADGE : #69LC-R-01-SET-N INSTALLATION INSTRUCTIONS

INSTALL BOWTIE ON VEHICLE:



- Prep the area where bowtie will attach by cleaning with grease and wax remover (make sure cleaning product you're using is safe for whatever coating is on your tail panel)
- Find centerline of vehicles tail panel and use painters tape to create some positioning guidelines for bowtie location.
- Using the second adhesion promoter packet, carefully apply promoter to vehicle surface where badge will attach. **(do not apply to 'visible' surfaces!)**
- Pull red masking from tape on main bowtie and attach to vehicles tail panel.
- **INSTALLATION IS COMPLETE**