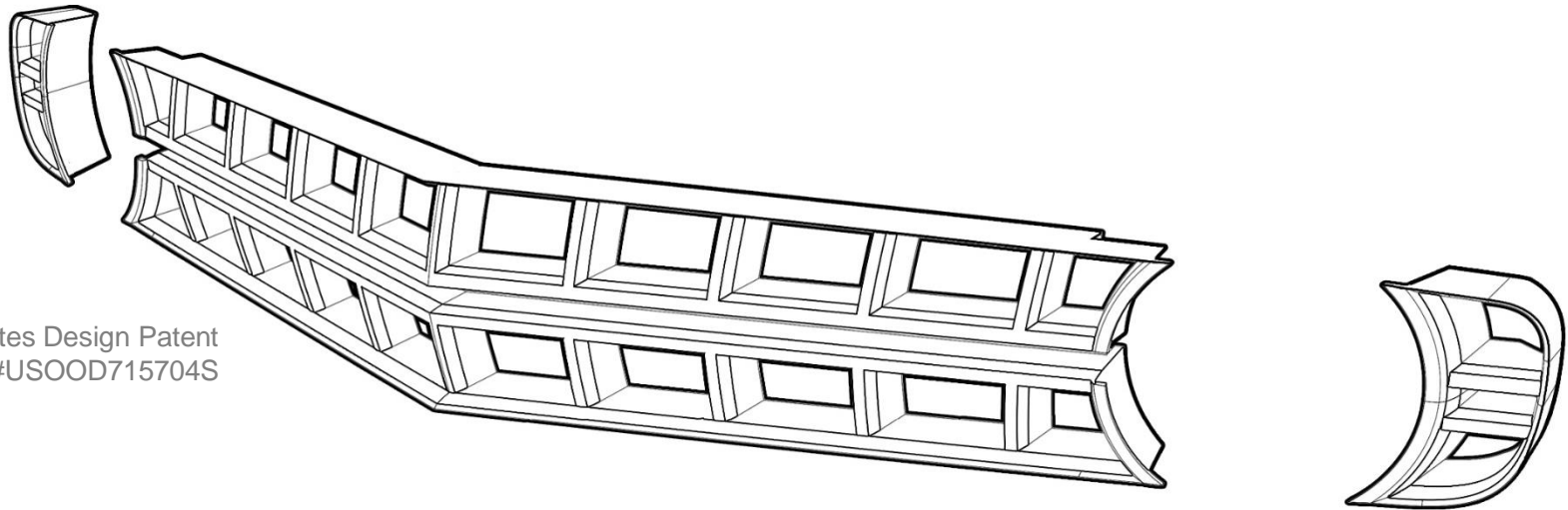




1969 CAMARO : CARBON FIBER GRILLE

INSTALLATION INSTRUCTIONS



United States Design Patent
#USOOD715704S

1969 CAMARO : CARBON FIBER GRILLE : #69LC01-SET-CF-N

INSTALLATION INSTRUCTIONS

*Thank you for purchasing this Steinhauser Design product!
We are proud to have created this product for your enjoyment by making it exclusive and well designed.*

* IMPORTANT INFORMATION *

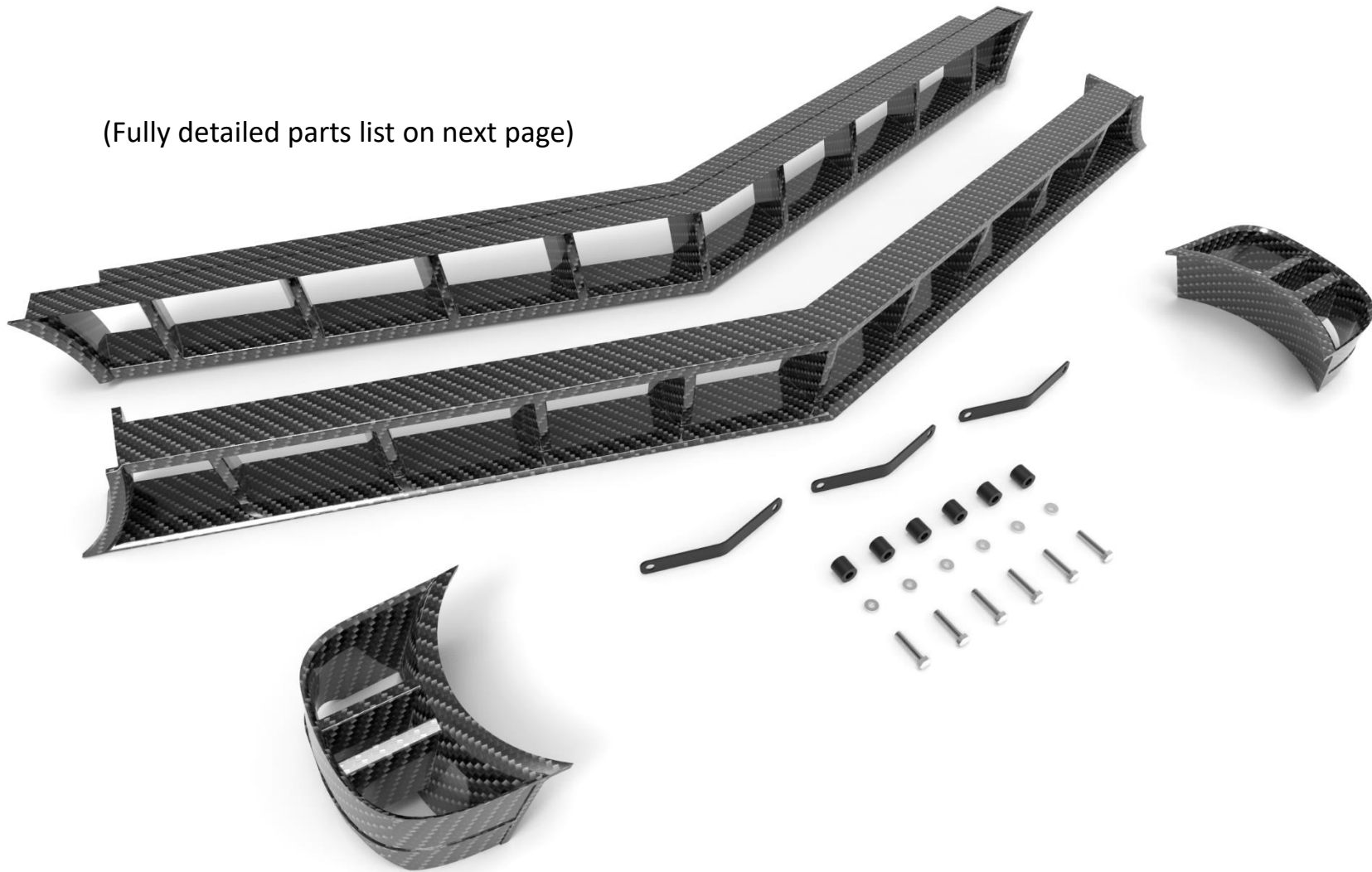
- Carbon Fiber **MUST** be properly prepped and coated with UV protectant clearcoat or paint prior to installation, in order to protect the material from the elements.
- These parts **WILL** fit the standard 1969 Camaro grille (Base, SS, and Z28 models) but **WILL NOT** fit the **RS** 1969 Camaro grille w/ hideaway headlights.
- Carefully check the parts list (see *page_04*) to ensure all parts are included.
- Thoroughly read through each step of the installation instructions prior to starting any installation or assembly procedures.
- Contact Steinhauser Design if you have any concerns or questions, using the contact info listed at the bottom of each page.
- The Steinhauser Design Camaro Grille installation procedure should only be performed by qualified and experienced individuals with an appropriate level of fabrication and technical expertise.

1969 CAMARO : CARBON FIBER GRILLE : #69LC01-SET-CF-N
INSTALLATION INSTRUCTIONS



PARTS LIST OVERVIEW

(Fully detailed parts list on next page)



1969 CAMARO : CARBON FIBER GRILLE : #69LC01-SET-CF-N

INSTALLATION INSTRUCTIONS



PARTS LIST OVERVIEW

Parts Description	Part #	Qty	QC
Carbon Fiber Grille: Top Middle Piece	69LC01-T-CF-N	1	
Carbon Fiber Grille: Bottom Middle Piece	69LC01-B-CF-N	1	
Carbon Fiber Grille: Driver Side Outer Piece	69LC01-D-CF-N	1	
Carbon Fiber Grille: Passenger Side Outer Piece	69LC01-P-CF-N	1	
Metal, Angled Grille Brackets w/ two holes		3	
Plastic Spacers for Grille Brackets		6	
Stainless Steel Hex Head Screws: 10-32 x 1" length		6	
Stainless Steel Flat Washers		6	
3M Double Sided Tape #06394 (1/2" wide x .090" thick)		1	
3M Adhesion Promoter Wipes #06396		3	

1969 CAMARO : CARBON FIBER GRILLE : #69LC01-SET-CF-N

INSTALLATION INSTRUCTIONS

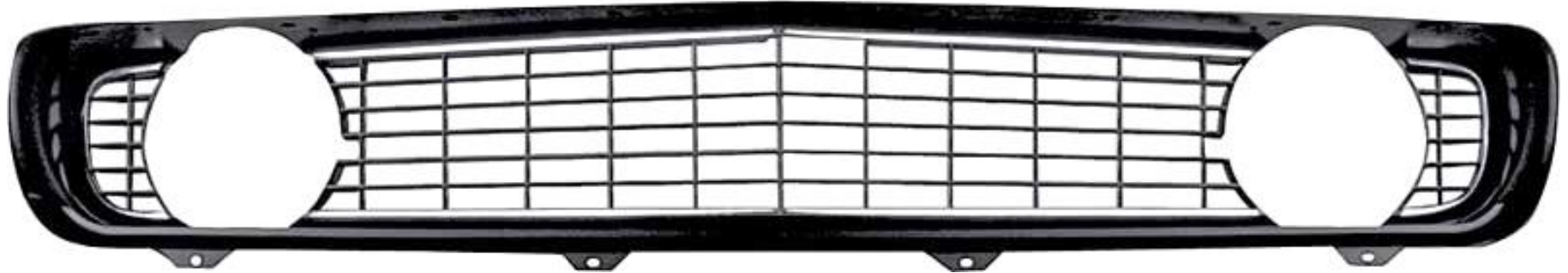


RECOMMENDED TOOLS

TOOL DESCRIPTION	PURPOSE
Air Reciprocating Saw or similar cutting device	Cutting out the egg crate grille from OEM grille surround
Dual Action Sander and Sandpaper	Smoothing out OEM grille areas where egg crate was cut out
Band Saw OR Hack Saw	Modifying the OEM hood latch handle
Belt and Disc Sander	Cleaning up the OEM hood latch handle modification
Dremel Rotary Tool w/ Metal Cutting Discs	Trimming the Carbon Fiber grille pieces to fit custom applications
3M Painters Tape or similar	Masking off and marking areas on Carbon Fiber parts to trim
Heat Gun	Adjusting the outer edge of OEM grille surround to fit vehicle
Wrench	Assembly of Carbon Fiber Grille parts
Grease and Wax Remover	Cleaning and prepping the Grille parts and vehicle for installation
Wypall Clean Towels or similar	Application of the grease and wax remover

1969 CAMARO : CARBON FIBER GRILLE : #69LC01-SET-CF-N
INSTALLATION INSTRUCTIONS

MODIFYING OEM GRILLE:



- Highly recommended to use either the original OEM Camaro grille or an OER reproduction grille (OER Product #: *R5028D)
- If using an all new OEM/OER grille, you may want to test fit and ‘form’ the outer surround to fit your specific vehicle. (instructions on next page)
- Cars built in 1969 were not built with as much precision as cars today. For that reason there could be variations from car to car, from side to side. Therefore, it may or may not be necessary to adjust the fit of your grille surround, even if it is an OEM part. This step is not mandatory or always needed but here is a tip to dial the fit in perfectly.
- If you already have a grille surround that fits your vehicle, please skip ahead to *page_08* in order to begin removal of the egg crate sections of the grille.

1969 CAMARO : CARBON FIBER GRILLE : #69LC01-SET-CF-N

INSTALLATION INSTRUCTIONS

MODIFYING OEM GRILLE:



- Apply 3M Painters tape to the fender and valance panel edges for protection.
- With headlight cans and headlight trim removed, test fit the grille surround onto the vehicle.
- The **'forming'** of the outer grille surround should only be done **prior to painting** and finishing of the surround. If you try to form after painting, the paint will be damaged by the heat and pressure applied.

- **TOOL REQUIRED: HEAT GUN**
- Use a heat gun to heat up the outer grille surround and lightly apply pressure on the outer edge in order to gradually form the surround to the correct shape.
- The goal is to improve the grille surround fitment to your specific vehicle. Heat and form to desired shape.

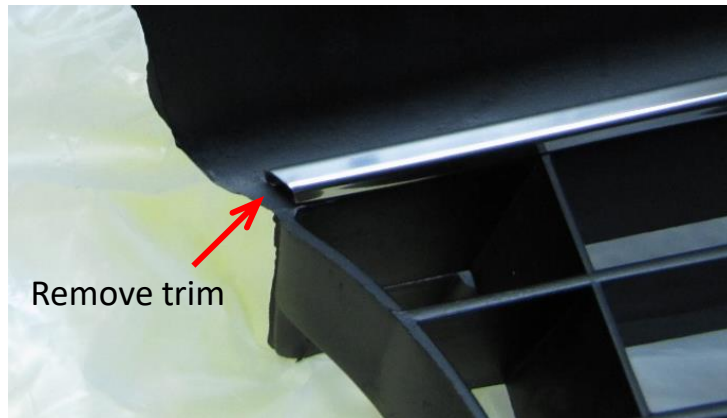


1969 CAMARO : CARBON FIBER GRILLE : #69LC01-SET-CF-N

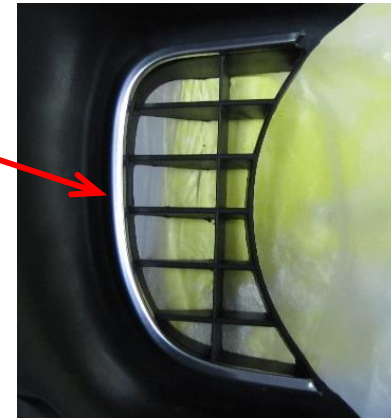
INSTALLATION INSTRUCTIONS

MODIFYING OEM GRILLE:

- To begin the egg crate section removal process, carefully remove the metal trim pieces that surround the egg crate area. There should be 4 metal trim pieces in total. These can be removed fairly easily using a plastic pry tool. If using a metal pry tool, be extra careful to not deform the trim.



Remove trim

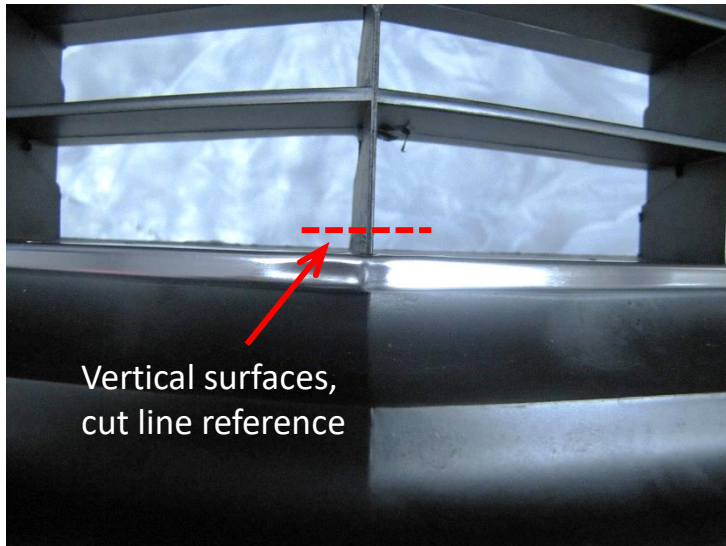


- Do not pry too hard on any section of the metal trim as it can warp very easily and therefore damage the trim.
- Lightly pry and slowly work your way from one end of the trim to the other.

1969 CAMARO : CARBON FIBER GRILLE : #69LC01-SET-CF-N

INSTALLATION INSTRUCTIONS

MODIFYING OEM GRILLE:



- **TOOL REQUIRED: AIR RECIPROCATING SAW or SIMILAR CUTTING DEVICE**
- Carefully trim all vertical surfaces out of the center, egg crate area of grille surround. Do not cut all the way to the edge of the vertical, leave an extra 1/8" which can be sanded down later the rest of the way. This will allow you to make the outer horizontal surface of the grille surround nice and smooth for installing the new Carbon Fiber grille parts.

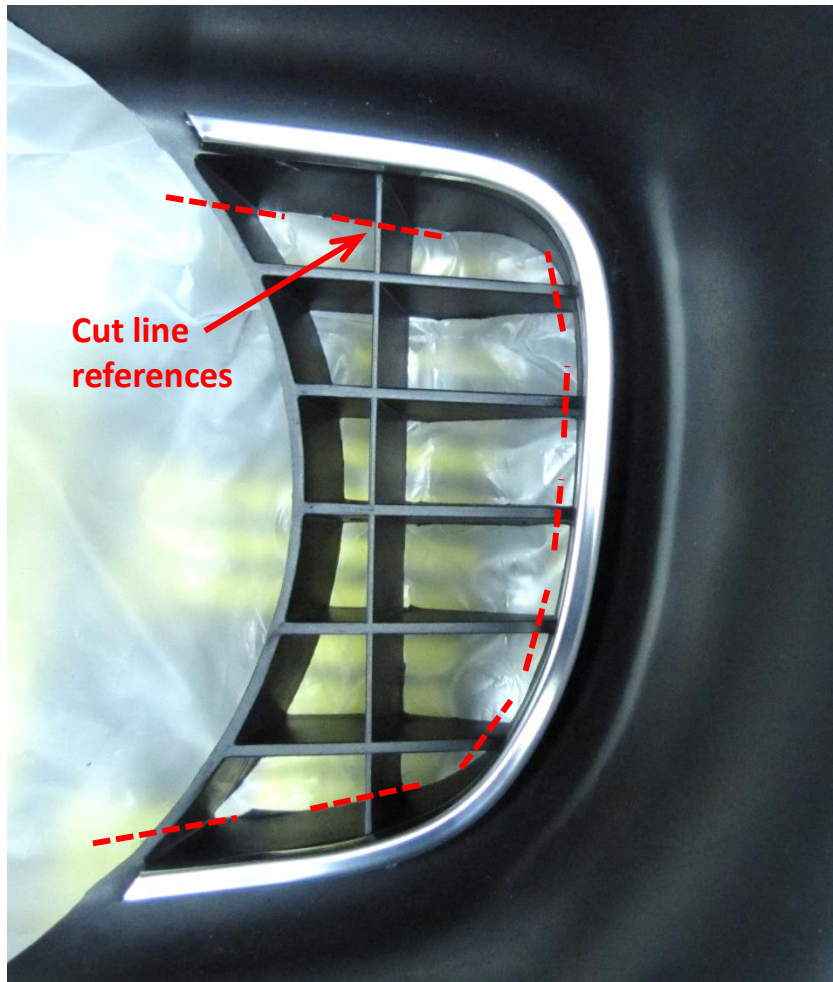
- **DO NOT** trim any of the outer horizontal surface out of the grille surround. As mentioned above, this will be the surface in which the new Carbon Fiber grille parts are installed and attached to.
- However, there will be an opening along this horizontal surface within the upper portion of the grille surround, shown in image on right. This opening is for the OEM hood latch lever.



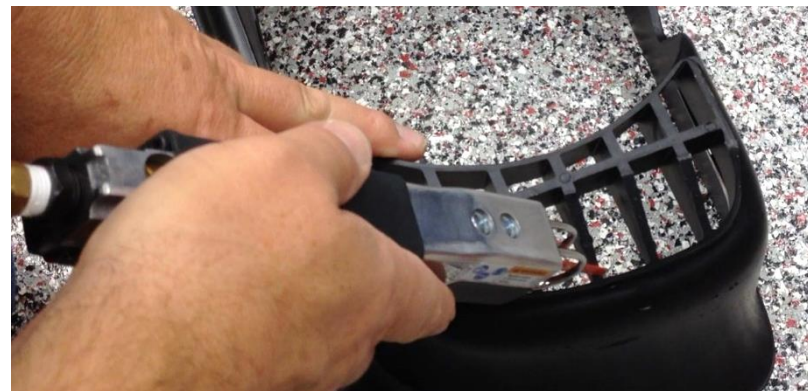
1969 CAMARO : CARBON FIBER GRILLE : #69LC01-SET-CF-N

INSTALLATION INSTRUCTIONS

MODIFYING OEM GRILLE:



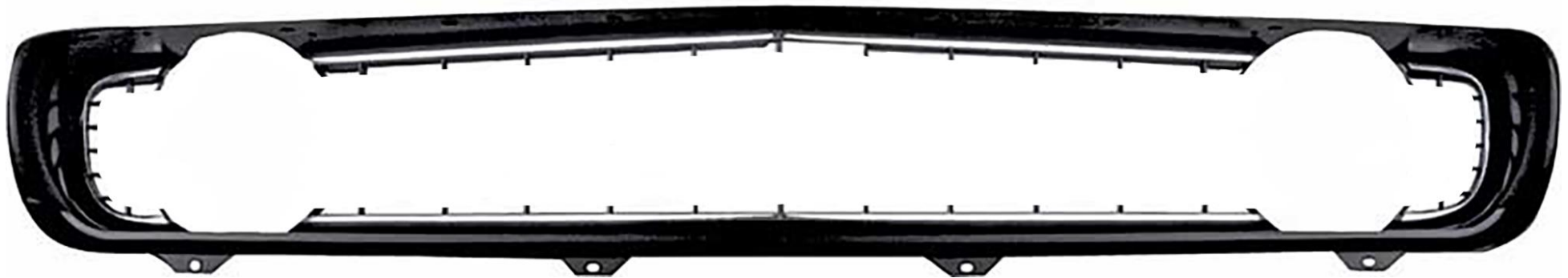
- Same instructions as previous page, regarding trimming out of the outer section grille egg crate. Refer to the cut line reference shown in image on left. Trim out both driver and passenger side egg crate sections.
- Remember to not trim the entire egg crate surfaces out, leave roughly 1/8" of material to sand down smooth.
- **DO NOT** trim or modify the outer most surface that the egg crate surfaces intersect with, this surface will be where the outer Carbon Fiber grille pieces attach to the grille surround.



1969 CAMARO : CARBON FIBER GRILLE : #69LC01-SET-CF-N INSTALLATION INSTRUCTIONS

MODIFYING OEM GRILLE:

- **TOOL REQUIRED: DUAL ACTION SANDER / SANDPAPER**
- The grille surround should now look like the image below with a majority of the egg crate material removed.
- Notice the small sections of egg crate still showing. Using a dual action sander, carefully remove and smooth out the remaining egg crate material.



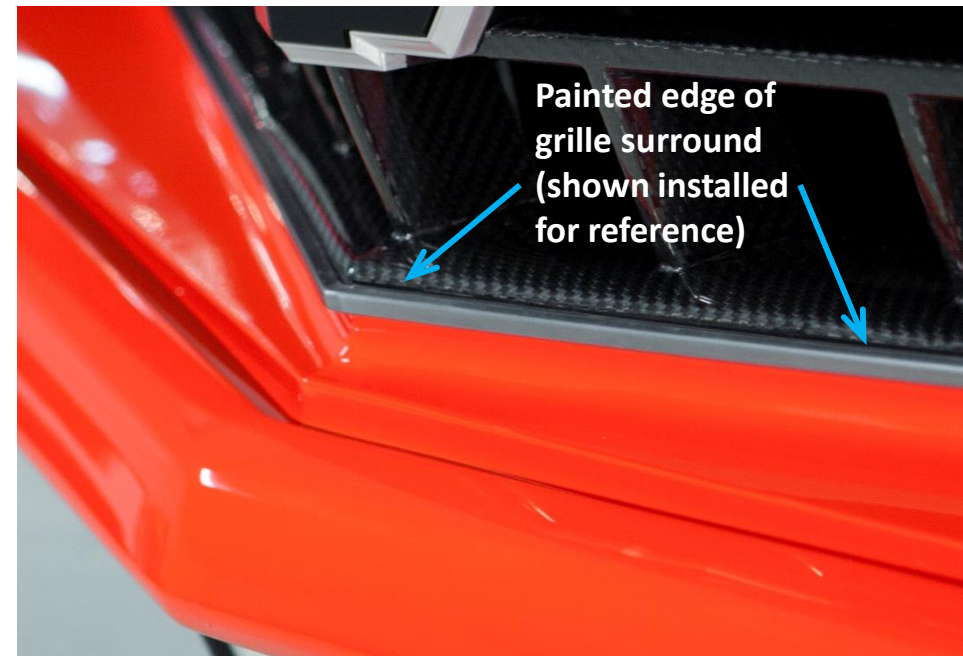
- The outer section of the grille may be too tight to fit the dual action sander into for smoothing out the area. An alternative method could be a small sanding block with sandpaper and manually sanding out the remaining egg crate material.
- Be careful when sanding and do not damage or sand away the outer surface of the grille surround. Again, this surface will be used for the Carbon Fiber grille install and attachment.

1969 CAMARO : CARBON FIBER GRILLE : #69LC01-SET-CF-N

INSTALLATION INSTRUCTIONS

PREPPING OEM GRILLE:

- Once the grille surround is properly formed and the egg crate is removed entirely, paint and finish the surround in preparation to install the Carbon Fiber grille assembly.



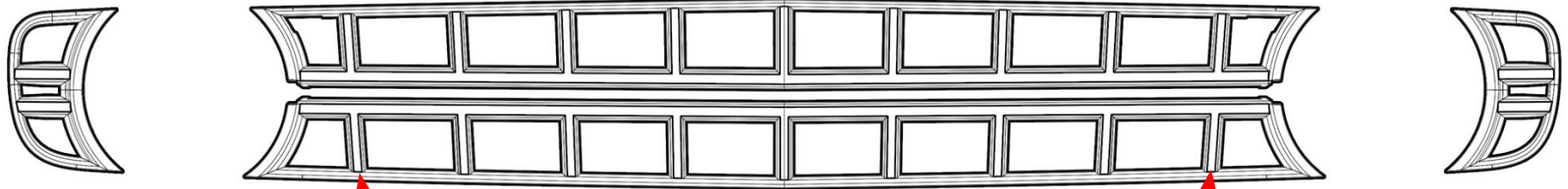
- If your grille paint color is a bright color like the orange shown here, we recommend masking and painting a thin black line behind and inside the metal trim area. This small section might be visible once the Carbon Fiber grille assembly is installed.

1969 CAMARO : CARBON FIBER GRILLE : #69LC01-SET-CF-N

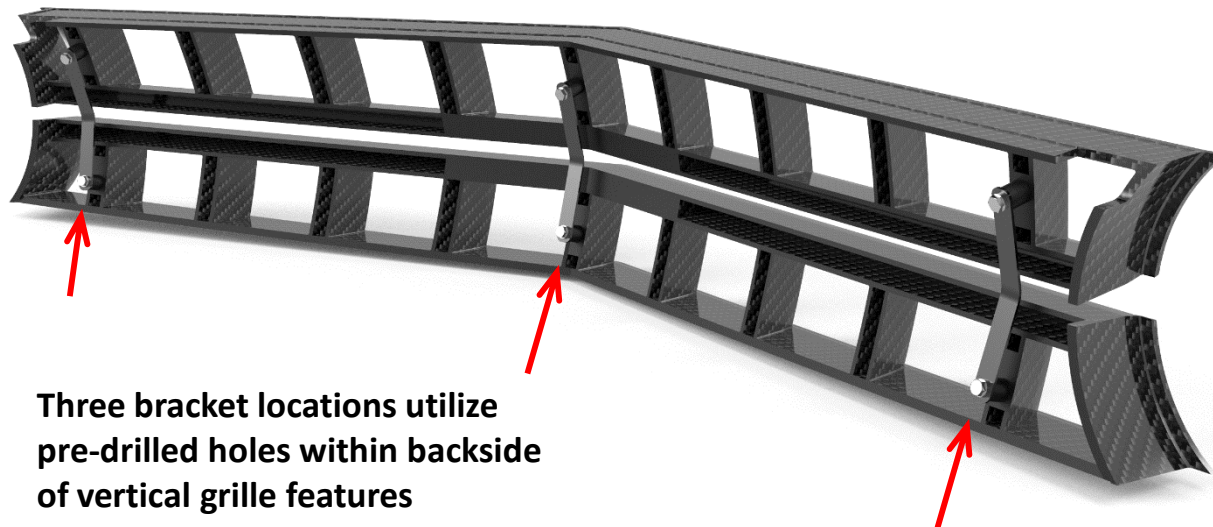
INSTALLATION INSTRUCTIONS

CARBON FIBER ASSEMBLY:

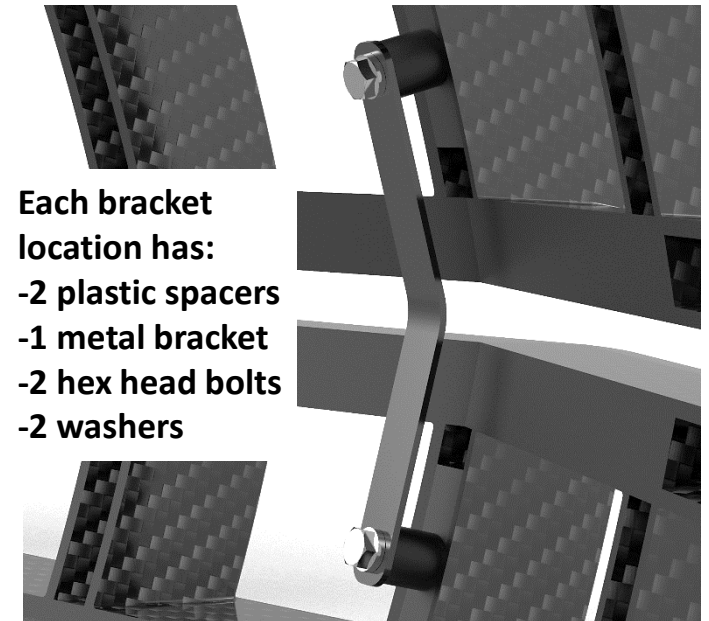
- **TOOL REQUIRED: WRENCH**
- Assemble the upper and lower carbon fiber grille pieces, as shown in images below
- Use supplied hardware; (6) plastic spacers, (6) 10-32 x 1" hex bolts, (6) flat washers, (3) metal angled brackets



Reference orientation of angled vertical features
(top and bottom center section parts are not the same)



Three bracket locations utilize
pre-drilled holes within backside
of vertical grille features



Each bracket
location has:
-2 plastic spacers
-1 metal bracket
-2 hex head bolts
-2 washers

1969 CAMARO : CARBON FIBER GRILLE : #69LC01-SET-CF-N

INSTALLATION INSTRUCTIONS

TEST FIT CARBON FIBER:



- This grille is made to fit standard applications but due to variations among cars and because we know a fair number of our grilles will end up on highly modified cars, trimming may be necessary specific to each car.
- **TOOL REQUIRED: ROTARY TOOL W/ CUTTING DISC**
- Test fit OEM grille surround onto the vehicle once again.
- Carefully slide the assembled upper and lower sections of the carbon fiber grille into the grille surround while on the car.

- The purpose of this test fit is to see if there are any parts behind the carbon fiber grille that may keep the grille from fitting and/or installing properly.
- If there are any areas that need clearance along back side of carbon fiber pieces, mask off area of concern with painters tape.
- Mark area that needs trimming for clearance and use rotary tool to very carefully trim out section.

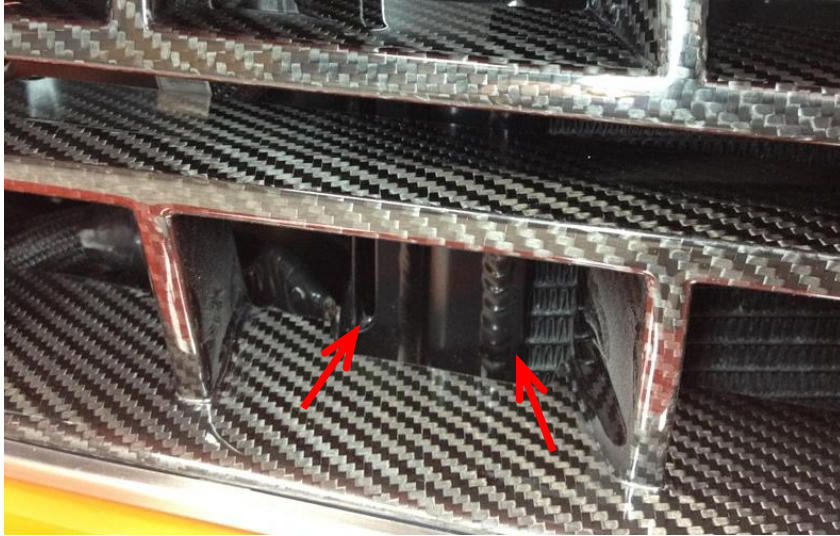


Make sure the cutting tool rotation direction is against the clear coated surface. This will reduce risk of chipping the clear coat.

1969 CAMARO : CARBON FIBER GRILLE : #69LC01-SET-CF-N

INSTALLATION INSTRUCTIONS

TEST FIT CARBON FIBER:



- Image on left shows an example of custom application that required extra trimming of carbon fiber lower center section.



- Image on right highlights the OEM standard hood latch lever which will need to be modified/shortened in order to function properly. See next page for hood latch lever trimming instructions

1969 CAMARO : CARBON FIBER GRILLE : #69LC01-SET-CF-N

INSTALLATION INSTRUCTIONS

TRIM HOOD LATCH LEVER:

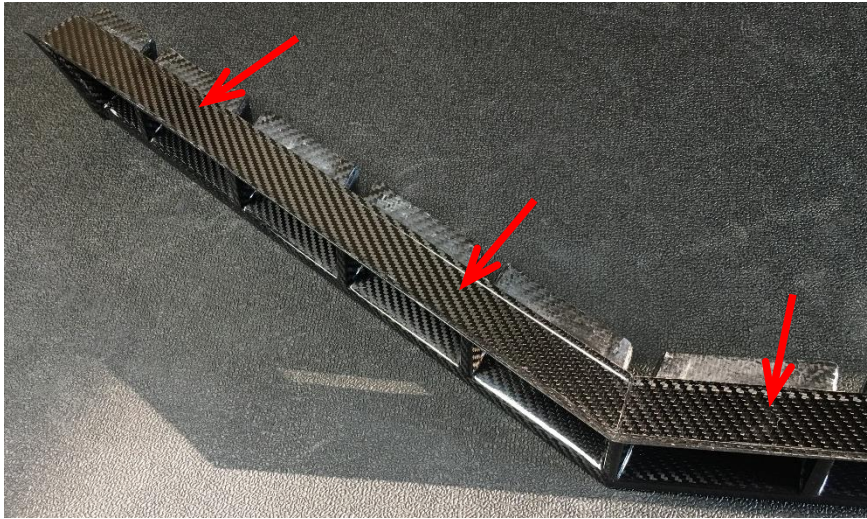
- **TOOLS REQUIRED: HACK SAW & BELT SANDER**
- Remove the hood latch and lever assembly from the vehicle and mask off lever with tape as shown on right
- Measure 1 3/8" from end of lever, mark straight line
- Using measured line for reference, trim down the lever with hack saw
- Radius the levers new trim edge with a belt sander
- Paint the lever in order to protect the bare metal created from modification
- Reinstall trimmed lever w/ hood latch assembly



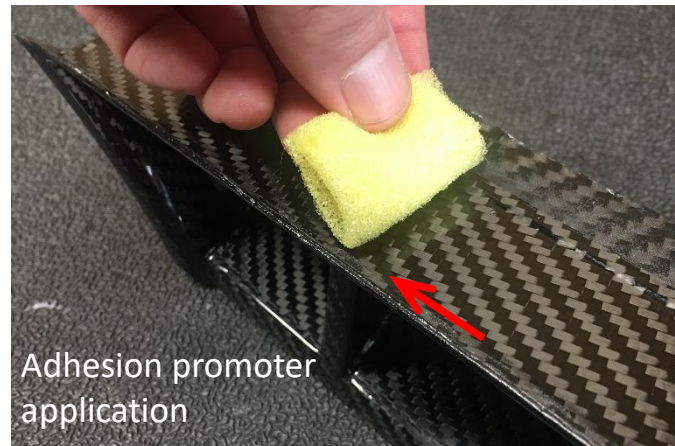
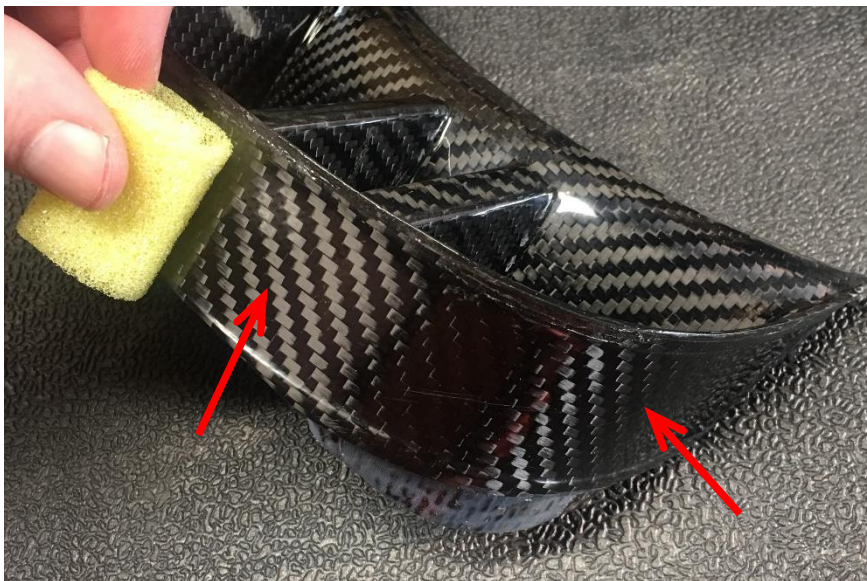
1969 CAMARO : CARBON FIBER GRILLE : #69LC01-SET-CF-N

INSTALLATION INSTRUCTIONS

INSTALL CARBON FIBER PARTS:



- **REQUIRED: GREASE & WAX REMOVER, 3M ADHESION PROMOTER**
- Prep recessed tape flanges on all carbon fiber grille parts by wiping with grease and wax remover
- Once all parts are prepped, cleaned and dry; carefully apply the supplied 3M Adhesion promoter.
- **IMPORTANT: DO NOT** get the promoter solution on any main surfaces that will be visible once installed. The promoter will etch and damage the finish/clear coat of the carbon fiber. Clean hands thoroughly once complete.



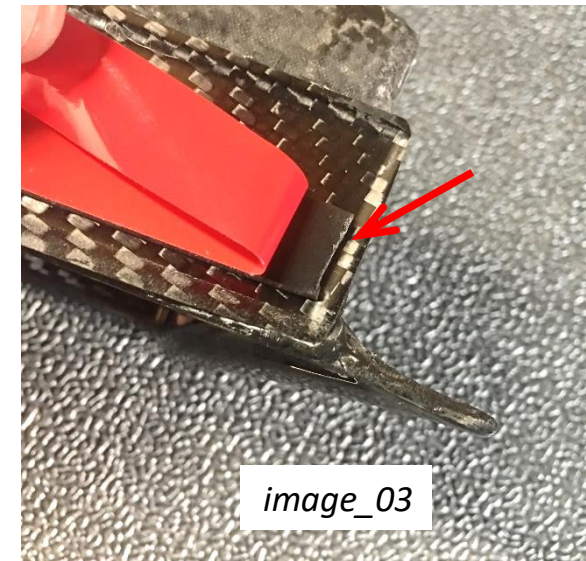
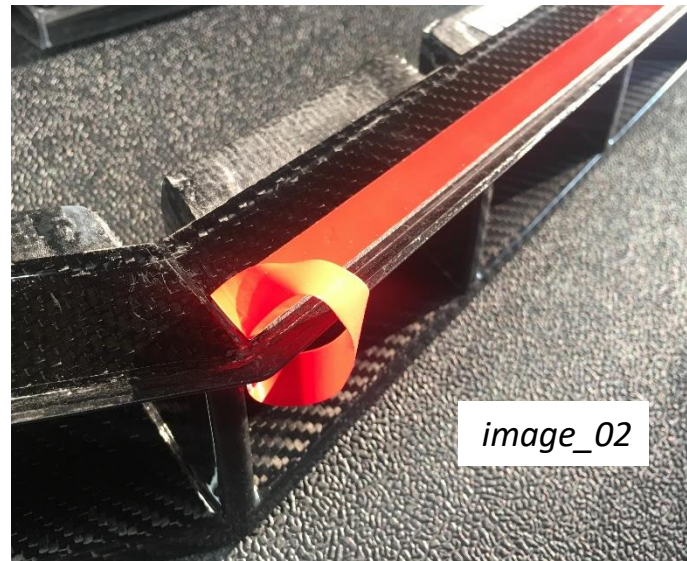
Adhesion promoter application

- Apply the promoter just inside the recessed edge on each tape flange as shown in image here with promoter wipe.

1969 CAMARO : CARBON FIBER GRILLE : #69LC01-SET-CF-N

INSTALLATION INSTRUCTIONS

INSTALL CARBON FIBER PARTS:

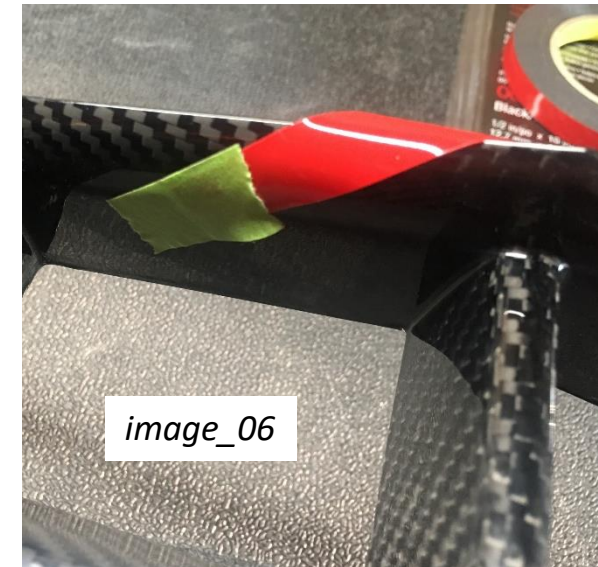
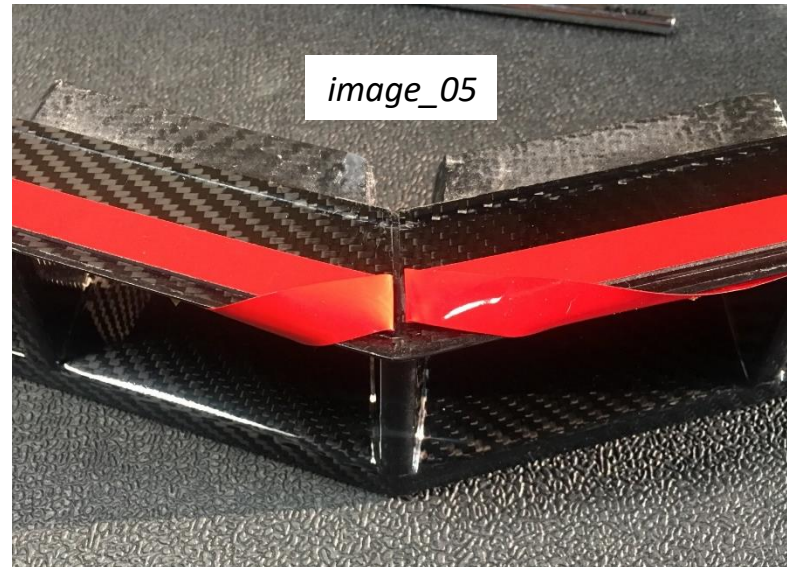
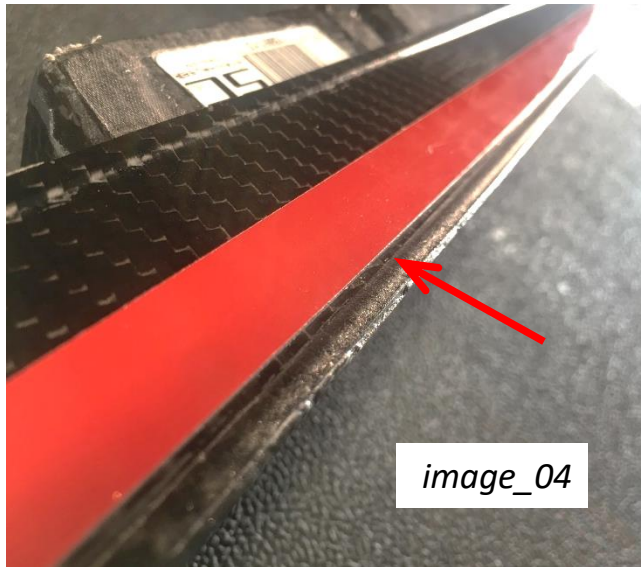


- **REQUIRED: 3M DOUBLE SIDED TAPE**
- Apply tape to upper and lower center section parts.
- *image_01*, tape applied inside leading edge of center section part. Make sure to leave 3" on extra on both ends to use as 'pull tabs' when installing the part.
- *image_02*, pull back the tape mask and carefully trim the tape along parts centerline.
- *image_03*, outer end of center section part shown here. Pull back extra mask and trim tape inside recessed tape flange edge.

1969 CAMARO : CARBON FIBER GRILLE : #69LC01-SET-CF-N

INSTALLATION INSTRUCTIONS

INSTALL CARBON FIBER PARTS:

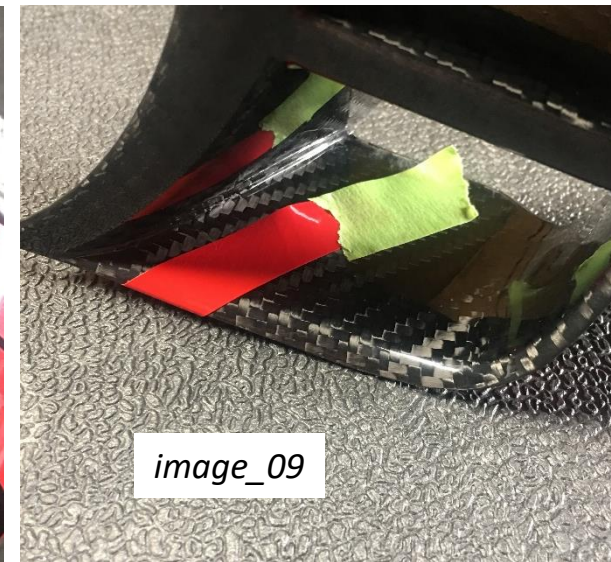
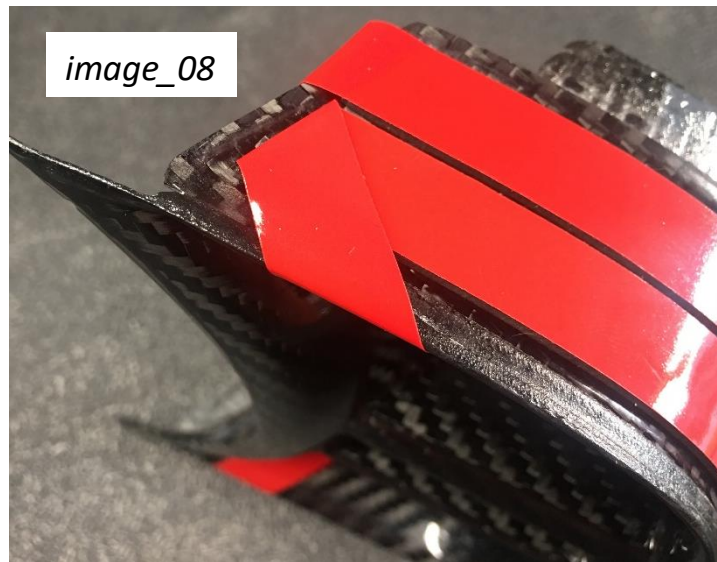
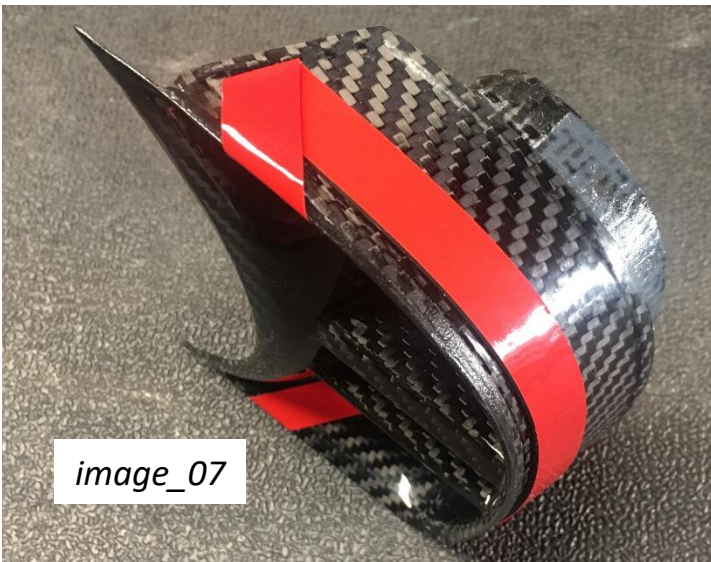


- **REQUIRED: 3M DOUBLE SIDED TAPE**
- *image_04*, make sure the tape is applied just inside of the recessed edge/lip on all the carbon fiber parts, as shown here.
- *image_05*, use two separate pieces of tape on the center section parts because angle is too tight for tape to bend. Pull back masking and trim both sections of tape along centerline as shown here.
- *image_06*, use painters tape to hold down the individual pull tabs.

1969 CAMARO : CARBON FIBER GRILLE : #69LC01-SET-CF-N

INSTALLATION INSTRUCTIONS

INSTALL CARBON FIBER PARTS:



- **REQUIRED: 3M DOUBLE SIDED TAPE**
- *image_07*, apply double sided tape to outer corner carbon fiber pieces. Keep tape line inside of recessed tape flange edge as shown.
- *image_08*, apply additional piece of tape just behind first piece. The tape flange has enough space to allow for two pieces of ½" wide tape. This can be done to all four carbon fiber pieces.
- *image_09*, use painters tape to hold down the individual pull tabs.

1969 CAMARO : CARBON FIBER GRILLE : #69LC01-SET-CF-N

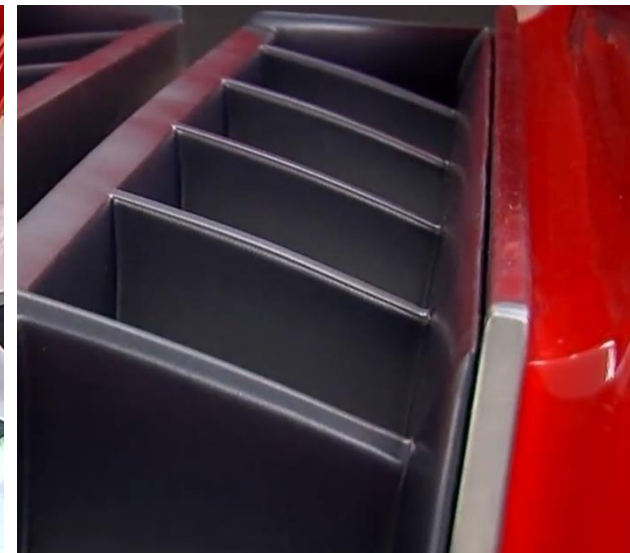
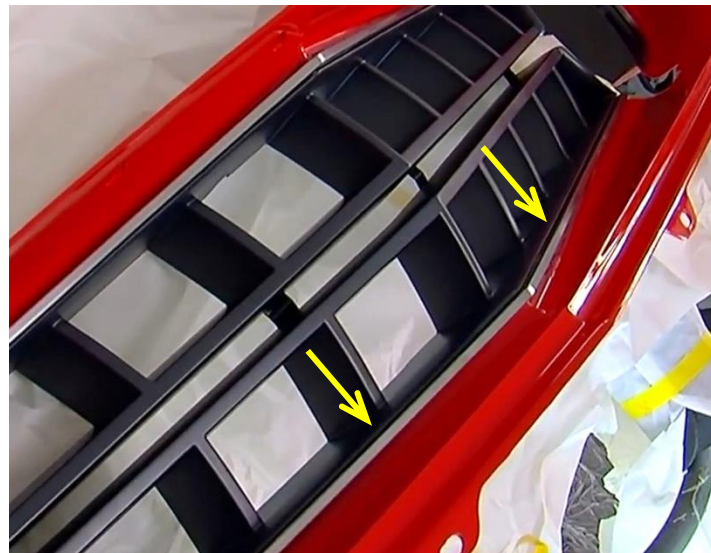
INSTALLATION INSTRUCTIONS

INSTALL CARBON FIBER PARTS:



- **REQUIRED: GREASE & WAX REMOVER, 3M ADHESION PROMOTER**
- Prep and clean the grille surround surfaces where the carbon fiber grille inserts will be mounted.
- Apply adhesion promoter to grille surround mounting surfaces. Careful to not get any of the promoter on visible areas of the grille surround.

- Carefully slide the carbon fiber grille center section assembly into the prepped grille surround.
- Align the leading edge of the carbon fiber parts, just behind the grille surrounds metal trim pieces.
- Starting from the center, pull tape tabs and apply pressure to inside and outside of grille surround.



1969 CAMARO : CARBON FIBER GRILLE : #69LC01-SET-CF-N

INSTALLATION INSTRUCTIONS

INSTALL CARBON FIBER PARTS:



- Repeat same procedure for installing the outer corner carbon fiber pieces. Fit into surround, pull tape tabs one at a time and apply pressure inside and out of the grille surround.
- Make sure all carbon fiber parts are installed correctly within the grille surround.
- If adjustment is needed, hex head grille assembly bolts can be loosened to adjust the gap between the top and bottom center section pieces. Then retighten the bolts once desired fitment is achieved.

- Install the entire surround with carbon fiber grille into the vehicle.
- **INSTALLATION IS COMPLETE**
- Please allow 24 hours before washing the grille area to give adhesive time to properly cure.
- If you have any questions or concerns regarding the installation process, please contact us using contact info at bottom of page.

