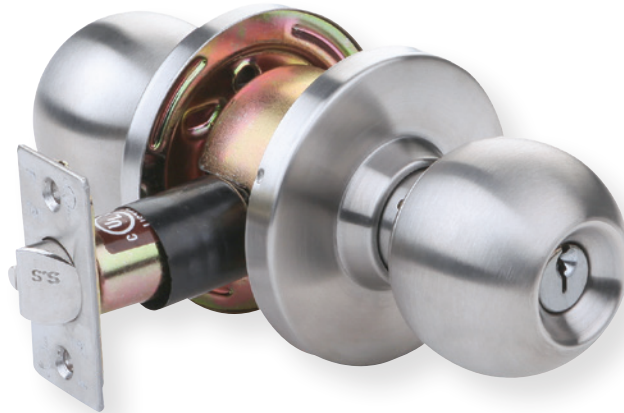


Heavy-Duty Cylindrical Grade 2  
**KC2300 SERIES**



Empire Knob Style (EMP)

**FEATURES**

- Performance**
- Complies with ANSI A156.2 Series 4000
  - Grade 2, 400,000 cycles
  - UL/ULC listed for 3 hour fire door

- Chassis**
- Cylindrical Steel-coated with zinc dichromate (corrosion resistance)

- Latch**
- 1 1/8" x 2 1/4", square corner faceplate
  - 1" housing diameter (stainless steel)
  - 1/2" throw

- Rose**
- 3" diameter

- Backset**
- Standard: 2 3/4"
  - Optional: 2 3/8"

- Strike**
- Standard: Square corner 1 1/4" x 4 7/8" ANSI ASA Strike
  - Optional: T Strike (1 1/8" x 2 3/4")
  - Optional: F Strike (full lip)

- Cylinder**
- C keyway (SCC)
  - 6-pin solid brass
  - Keyed different (KD)

- Keys**
- Two nickel silver per lock cylinder

- Door Thickness**
- 1 3/8" to 1 3/4"

- Door Preparation**
- 2 1/8" diameter for knob
  - 1" diameter for latch bolt
  - Fits standard 161 door prep.

- Warranty**
- Lifetime limited

# KC2300 SERIES

## OPTIONS

**KEYING** 6-pin cylinders, can be pinned to 5-pin.

**Cylinders** Arrow A (ARA), Corbin 59A1 (C059A1), Corbin 60 (C06), Corbin Russwin L4 (CL4), Options Kwikset (KW1), Russwin D1 (RD1), Sargent LA (SAL), Schlage E (SCE), Schlage F (SCF), Weiser E (WRE), Yale 8 (YA8), Yale GA (YGA)

**Tell Cylinder** Restricted Tell keyway cylinder available, optional. Tell keyway cylinder is available only keyed to 6-pin.

**Keying Options** Grand master key (GMK), construction master key (CMK), master key (MK), keyed different (KD), keyed alike (KA), interchangeable core uncombined (IC), 0-bitted (OBIT)

<b>AVAILABLE FUNCTIONS</b>	Classroom 84	Privacy Bed/Bath 76
	Storeroom 86	Passage Hall/Closet 75
	Communicating 91	Exit Latch 80
	Hotel 93	Single Dummy 01

## TELL FINISHES



**US32D**  
Satin Stainless Steel



**US3**  
Polished Brass