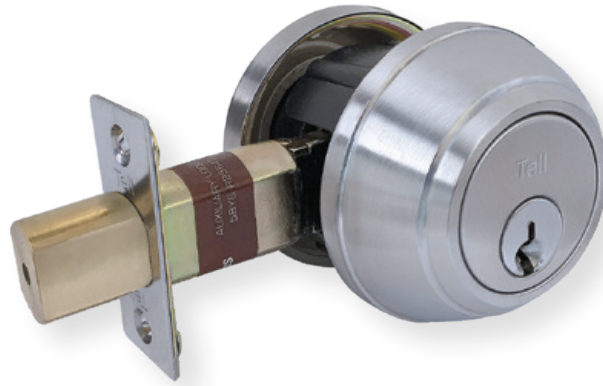


Heavy-Duty Grade 1 Tubular  
**DB1000 SERIES**



**FEATURES**

- Performance**
  - Complies with ANSI A156.5
  - Grade 1
  - 250,000 cycles
  - UL/ULC listed 3 hour fire rating

---

- Chassis**
  - Tubular, steel

---

- Deadbolt**
  - 1" x 2 ¼", square corner faceplate
  - 1" housing diameter (stainless steel)
  - 1" throw
  - Roller bar (added security for hacksaw or reciprocating blade cutting)

---

- Backset**
  - 2 ¾" (standard)

---

- Strike**
  - 1 ½" x 2 ¾", square corner faceplate

---

- Cylinder**
  - C keyway (SCC)
  - 6-pin solid brass
  - Keyed different (KD)
  - Double or single available

---

- Keys**
  - Two nickel silver per lock cylinder

---

- Door Thickness**
  - 1 ¾" to 2"

---

- Door Preparation**
  - 2 ½" diameter for bore
  - 1" diameter for bolt
  - Fits standard 161 door prep

---

- Warranty**
  - Lifetime limited

*See options on back*

