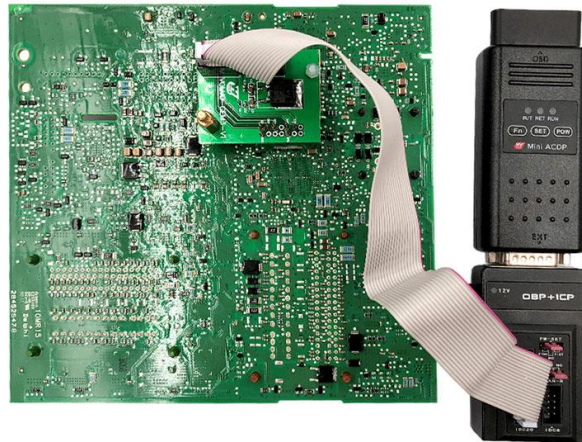


Yanhua ACDP New Volvo IMMO Module 20 Diagram

Support Key Types:



CEM connection diagram :

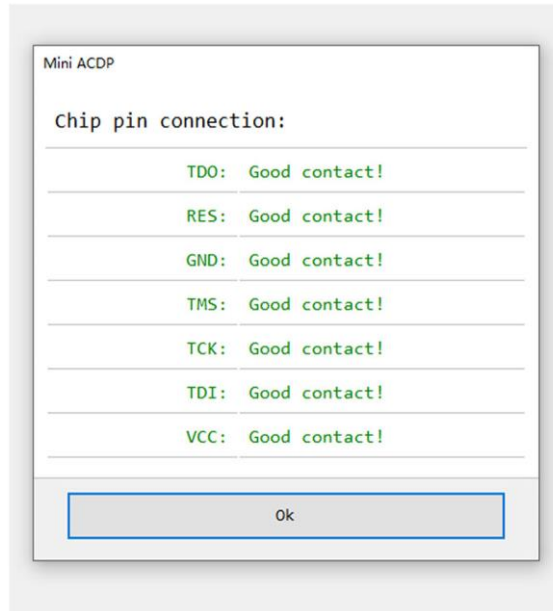


SPC5646C ▲

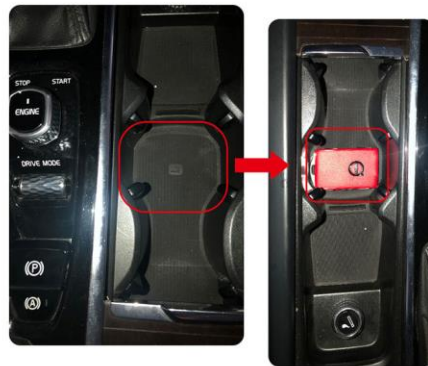


SPC5647G/ SPC5648G ▲

Pin Intelligent Detection:



Programming key area:

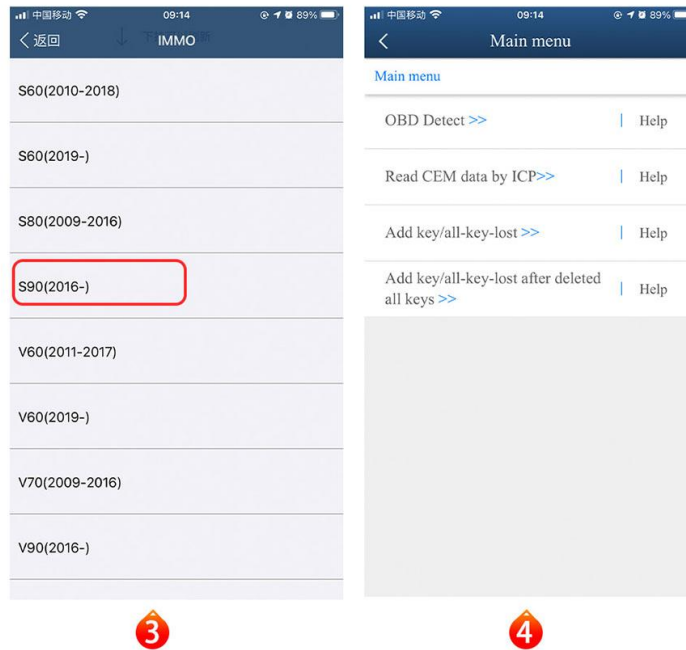
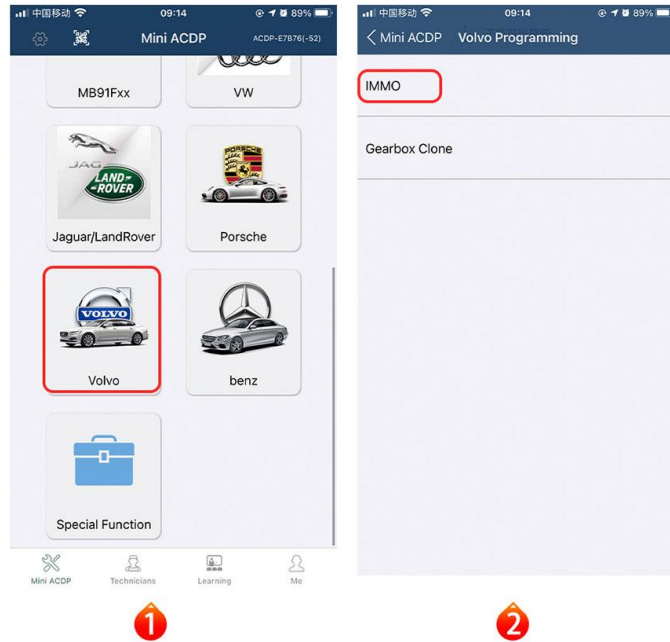


VOLVO ▲







LYNK&CO ▲

APP Operation Interface:



Configuration List :

ACDP Configuration List (Module 20 New VOLVO IMMO Module)

Item NO.	Adapters/Parts	Pictures	Quantity	Adapters/Parts Functions
1	NEW-VOLVO-CEM-A Interface board	 <p>A green printed circuit board (PCB) labeled 'NEW-VOLVO-CEM-A'. It features a multi-pin connector on the left side, a central integrated circuit (chip), and several test points labeled 'VCC', 'RES', 'TCK', 'TDG', and 'TDK' on the right side.</p>	1PC	Applicable to connect the CEM module test point of the new Volvo SPC5646C chip model
2	NEW-VOLVO-CEM-B Interface board	 <p>A green printed circuit board (PCB) labeled 'NEW-VOLVO-CEM-B'. It has a similar layout to the CEM-A board but with a different connector and test point configuration.</p>	1PC	Applicable to connect the CEM module test points of the new Volvo SPC5647G/SPC5648G chip models
3	VOLVO CEM copper pillar (13+6mm)	 <p>Six small, cylindrical copper pillars arranged in two rows of three. They are used for mounting the interface boards.</p>	6PCS	Applicable to fix new Volvo interface board
4	Test points cleaning probes(3*2)	 <p>A single, thin metal probe with a pointed tip, used for cleaning test points.</p>	1PC	Applicable to clean new Volvo CEM module test points.