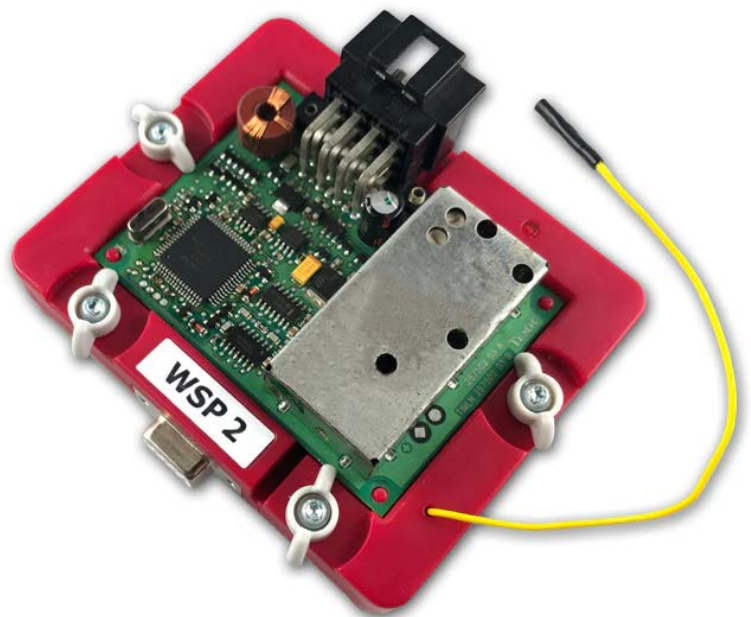
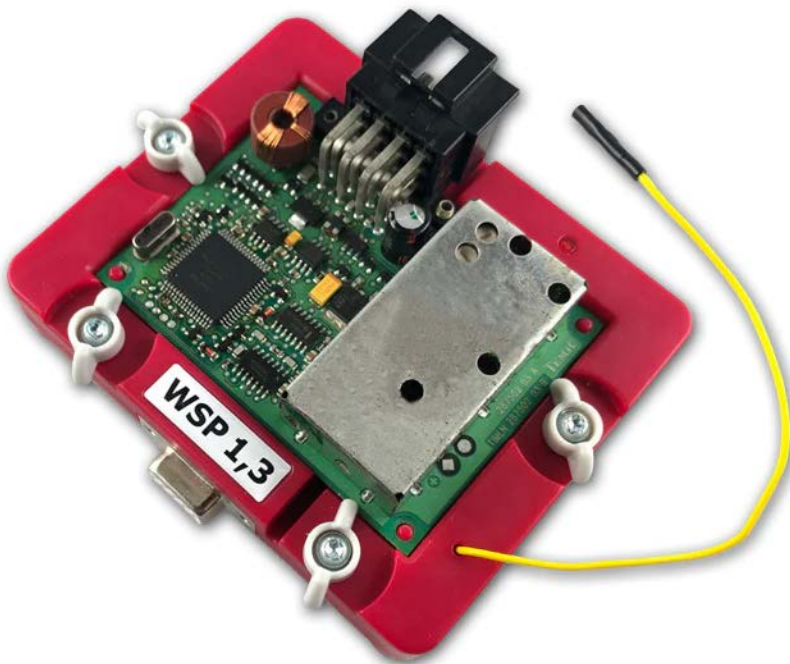


Click'n Go

Sprinter Temic I, II, III gen Click'n Go Adapter
Works with MBProg Programmer. No soldering required.
Sprinter Temic I gen immobiliser with 908 Motorola processor
(Mask 1J35D OR 4J74Y).



Click Sprinter Temic



How to read

Open MBProg software.

Check bottom right corner if your device is correctly connected.

Now click Chip button.

Selected Device: None

00	01	02	03	04	05	06	07	08	09	0A	0B	0C	0D	0E	0F	01	2	3	4	5	6	7	8	9	A	B	C	D	E	F
0x00	FF	FF	FF	FF	FF	FF	FF	FF	FF	FF	FF	FF	FF	FF	FF	FF	FF	FF	FF	FF	FF	FF	FF	FF	FF	FF	FF	FF	FF	FF
0x10	FF	FF	FF	FF	FF	FF	FF	FF	FF	FF	FF	FF	FF	FF	FF	FF	FF	FF	FF	FF	FF	FF	FF	FF	FF	FF	FF	FF	FF	FF
0x20	FF	FF	FF	FF	FF	FF	FF	FF	FF	FF	FF	FF	FF	FF	FF	FF	FF	FF	FF	FF	FF	FF	FF	FF	FF	FF	FF	FF	FF	FF
0x30	FF	FF	FF	FF	FF	FF	FF	FF	FF	FF	FF	FF	FF	FF	FF	FF	FF	FF	FF	FF	FF	FF	FF	FF	FF	FF	FF	FF	FF	FF
0x40	FF	FF	FF	FF	FF	FF	FF	FF	FF	FF	FF	FF	FF	FF	FF	FF	FF	FF	FF	FF	FF	FF	FF	FF	FF	FF	FF	FF	FF	FF
0x50	FF	FF	FF	FF	FF	FF	FF	FF	FF	FF	FF	FF	FF	FF	FF	FF	FF	FF	FF	FF	FF	FF	FF	FF	FF	FF	FF	FF	FF	FF
0x60	FF	FF	FF	FF	FF	FF	FF	FF	FF	FF	FF	FF	FF	FF	FF	FF	FF	FF	FF	FF	FF	FF	FF	FF	FF	FF	FF	FF	FF	FF
0x70	FF	FF	FF	FF	FF	FF	FF	FF	FF	FF	FF	FF	FF	FF	FF	FF	FF	FF	FF	FF	FF	FF	FF	FF	FF	FF	FF	FF	FF	FF
0x80	FF	FF	FF	FF	FF	FF	FF	FF	FF	FF	FF	FF	FF	FF	FF	FF	FF	FF	FF	FF	FF	FF	FF	FF	FF	FF	FF	FF	FF	FF
0x90	FF	FF	FF	FF	FF	FF	FF	FF	FF	FF	FF	FF	FF	FF	FF	FF	FF	FF	FF	FF	FF	FF	FF	FF	FF	FF	FF	FF	FF	FF
0xA0	FF	FF	FF	FF	FF	FF	FF	FF	FF	FF	FF	FF	FF	FF	FF	FF	FF	FF	FF	FF	FF	FF	FF	FF	FF	FF	FF	FF	FF	FF
0xB0	FF	FF	FF	FF	FF	FF	FF	FF	FF	FF	FF	FF	FF	FF	FF	FF	FF	FF	FF	FF	FF	FF	FF	FF	FF	FF	FF	FF	FF	FF
0xC0	FF	FF	FF	FF	FF	FF	FF	FF	FF	FF	FF	FF	FF	FF	FF	FF	FF	FF	FF	FF	FF	FF	FF	FF	FF	FF	FF	FF	FF	FF
0xD0	FF	FF	FF	FF	FF	FF	FF	FF	FF	FF	FF	FF	FF	FF	FF	FF	FF	FF	FF	FF	FF	FF	FF	FF	FF	FF	FF	FF	FF	FF
0xE0	FF	FF	FF	FF	FF	FF	FF	FF	FF	FF	FF	FF	FF	FF	FF	FF	FF	FF	FF	FF	FF	FF	FF	FF	FF	FF	FF	FF	FF	FF
0xF0	FF	FF	FF	FF	FF	FF	FF	FF	FF	FF	FF	FF	FF	FF	FF	FF	FF	FF	FF	FF	FF	FF	FF	FF	FF	FF	FF	FF	FF	FF

Vcc= 5.0

Device Info

Device

Size

MCU ID

Program Adres Range

Start Adres

End Adres

Programmer Information

SWA 1.94

SWB 1015

SWA.B v212

Upd Status Ok

Date SW

SN : 5904855

Name JtagDS

HW Status Ok

LID 62D98E33000000A9

Jtag II Connected smok.com.pl

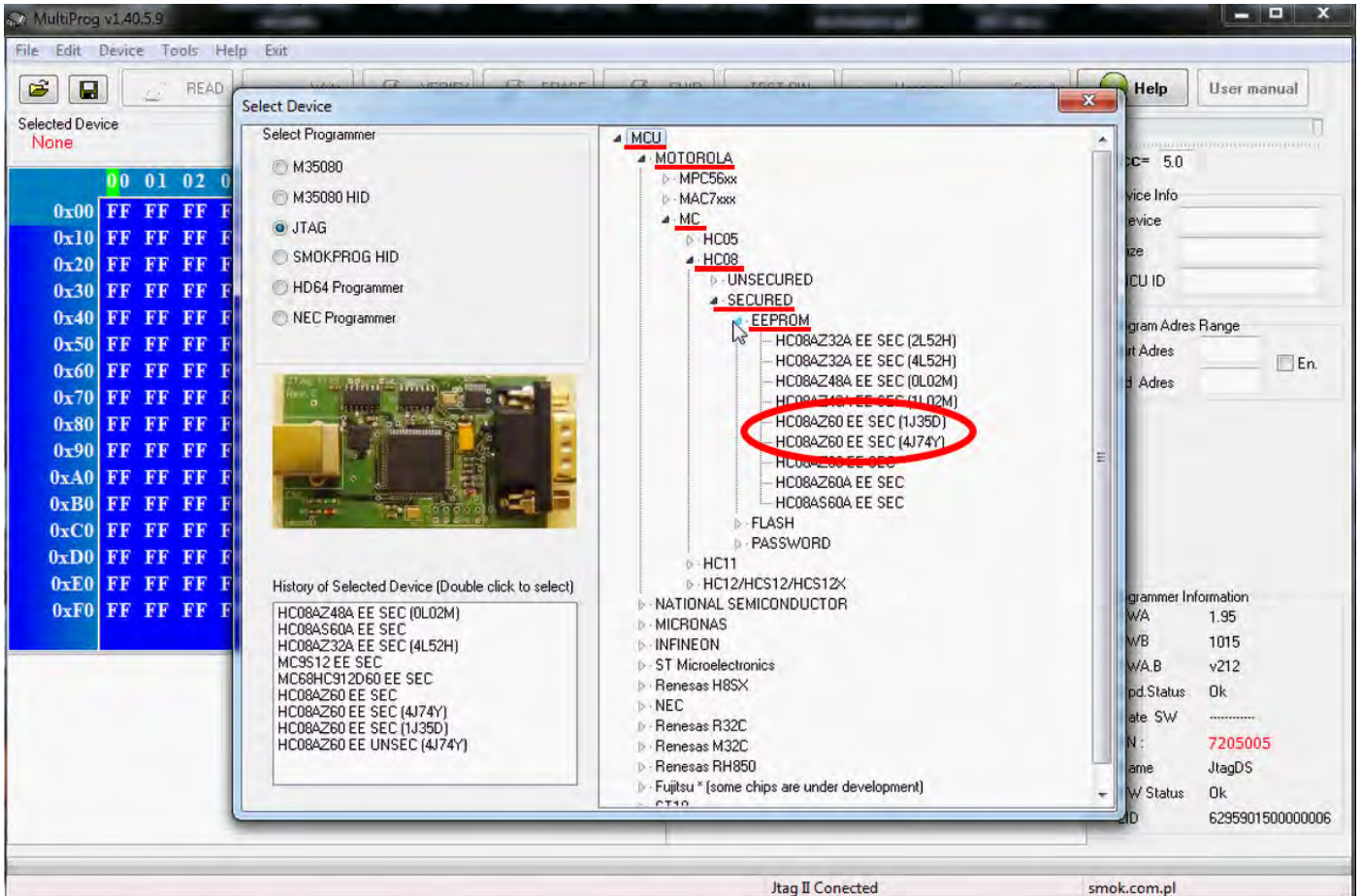
Click Sprinter Temic

Make sure that JTAG is selected in programmer software.

Select MOTOROLA > MC > HC08 > SECURED > EEPROM

Double click on HC08AZ60 EE SEC option as seen in the red circle.

Choose the proper mask set for your EIS (1J35D) OR (4J74Y).



Click Sprinter Temic

Now click on Read button.

The screenshot shows the MultiProg v1.40.5.7 software interface. The 'READ' button in the toolbar is highlighted with a red circle. The main window displays a memory dump for the selected device 'HC08AZ60 EE SEC (4J74Y)'. The memory dump shows addresses from 0x000 to 0x100, with hex values 'FF' and 'FF FF' displayed. The right sidebar shows device information and programmer details.

MultiProg v1.40.5.7

File Edit Device Tools Help Exit

READ Write VERIFY ERASE CHIP TEST PIN Usecure Security Help User manual

Selected Device
HC08AZ60 EE SEC (4J74Y)

	00	01	02	03	04	05	06	07	08	09	0A	0B	0C	0D	0E	0F	0123456789ABCDEF
0x000	FF	FF	FF	FF	FF	FF	FF	FF	FF	FF	FF	FF	FF	FF	FF	FF
0x010	FF	FF	FF	FF	FF	FF	FF	FF	FF	FF	FF	FF	FF	FF	FF	FF
0x020	FF	FF	FF	FF	FF	FF	FF	FF	FF	FF	FF	FF	FF	FF	FF	FF
0x030	FF	FF	FF	FF	FF	FF	FF	FF	FF	FF	FF	FF	FF	FF	FF	FF
0x040	FF	FF	FF	FF	FF	FF	FF	FF	FF	FF	FF	FF	FF	FF	FF	FF
0x050	FF	FF	FF	FF	FF	FF	FF	FF	FF	FF	FF	FF	FF	FF	FF	FF
0x060	FF	FF	FF	FF	FF	FF	FF	FF	FF	FF	FF	FF	FF	FF	FF	FF
0x070	FF	FF	FF	FF	FF	FF	FF	FF	FF	FF	FF	FF	FF	FF	FF	FF
0x080	FF	FF	FF	FF	FF	FF	FF	FF	FF	FF	FF	FF	FF	FF	FF	FF
0x090	FF	FF	FF	FF	FF	FF	FF	FF	FF	FF	FF	FF	FF	FF	FF	FF
0x0A0	FF	FF	FF	FF	FF	FF	FF	FF	FF	FF	FF	FF	FF	FF	FF	FF
0x0B0	FF	FF	FF	FF	FF	FF	FF	FF	FF	FF	FF	FF	FF	FF	FF	FF
0x0C0	FF	FF	FF	FF	FF	FF	FF	FF	FF	FF	FF	FF	FF	FF	FF	FF
0x0D0	FF	FF	FF	FF	FF	FF	FF	FF	FF	FF	FF	FF	FF	FF	FF	FF
0x0E0	FF	FF	FF	FF	FF	FF	FF	FF	FF	FF	FF	FF	FF	FF	FF	FF
0x0F0	FF	FF	FF	FF	FF	FF	FF	FF	FF	FF	FF	FF	FF	FF	FF	FF
0x100	FF	FF	FF	FF	FF	FF	FF	FF	FF	FF	FF	FF	FF	FF	FF	FF

Vcc= 5.0

Device Info

Device

Size

MCU ID

Program Adres Range

Start Adres 000000

End Adres 0001FF En.

Programmer Information

SWA 1.95

SWB 1015

SWA.B v212

Upd.Status Dk

Date SW

SN : 5904855

Name JtagDS

HW Status Dk

LID 62D98E33000000A9

Jtag II Conected smok.com.pl

Click Sprinter Temic

Immo reading process is done.

The screenshot displays the MultiProg v1.40.5.7 interface. The main window shows a memory dump for device HC08AZ60 EE SEC (4J74Y). The columns represent memory addresses from 0x000 to 0x100. The data column shows hexadecimal values and their corresponding ASCII characters. A red box highlights the ASCII column from address 0x000 to 0x0FF, which contains the text "Z...o3...".

Address	Hex	ASCII
0x000	5A 00 DE 9D 6F 33 06 7E 80 22 DF CA 8F 9B F0 94	Z...o3..."
0x010	7D B5 5C FC 84 3B 67 A3 2A 95 41 D7 7F 14 59 3A	},.,.,.,.,g.,.,.,.,A.,.,.,.,4.,.,.,.,Y:
0x020	B0 92 E4 B0 19 02 D1 3F 74 98 4B D2 68 BC AC 09	.,.,.,.,.,.,.,.,.,.,?,.,.,.,.,K.,.,.,.,h.,.,.,.,.
0x030	98 AD 4D 08 1D 10 B4 E3 9E FD A0 A7 F3 06 E3 FB	.,.
0x040	43 16 BC B0 E2 87 7E 3B 69 4D 02 27 41 02 B0 6F	C.,.
0x050	E5 9C 01 F8 29 31 97 BD 29 4E 63 45 B1 CC 92 46	.,.
0x060	7F 52 62 54 C6 EE 77 43 B7 F3 21 1F B2 1D 0C F7	.,.
0x070	93 87 8E 3A 56 30 A6 13 50 E8 CD 9D 4B B0 C8 34	.,.
0x080	9F E5 B9 FD 52 91 08 FB F7 0E 66 30 33 22 23 78	.,.
0x090	5A 0E 25 CF 1B D5 10 7C DC BF 1C CE 2E 7C C7 41	Z.,.
0x0A0	70 C5 B6 72 CC 98 B1 AA C1 75 30 AC 7C 4E AF A7	p.,.
0x0B0	32 CE AD 68 EC 59 5F FA 6C F9 2D 8D 48 2B B3 3F	2.,.
0x0C0	5A FF 46 47 1E 1F 7C 7D 7E 7F FF FF FF FF FF FF	Z.,.
0x0D0	FF FF FF FF FF FF FF FF FF FF FF FF FF FF FF FF	.,.
0x0E0	FF FF FF FF FF FF FF FF FF FF FF FF FF FF FF FF	.,.
0x0F0	FF FF FF FF FF FF FF FF FF FF FF FF FF FF FF FF	.,.
0x100	FF FF FF FF FF FF FF FF FF FF FF FF FF FF FF FF	.,.

Device Info:
Device: MC68HC08AZ60
Size: 1024
MCU ID: [empty]

Program Adres Range:
Start Adres: 000000
End Adres: 0001FF

Programmer Information:
SWA: 1.95
SWB: 1015
SWA.B: v212
Upd.Status: Ok
Date.SW:
SN: 5904855
Name: JtagDS
HW.Status: Ok
LID: 62D98E33000000A9

Read EE HC08AZ60 EE SEC (4J74Y)
Unsecuring Please Wait...
F: 48
Unsecure Ok
Conected
Baud: 14400
Read Ok
Saved backup File : C:\Users\Asus\Documents\Temp\Temp0.bin

Read Ok Jtag II Conected smok.com.pl