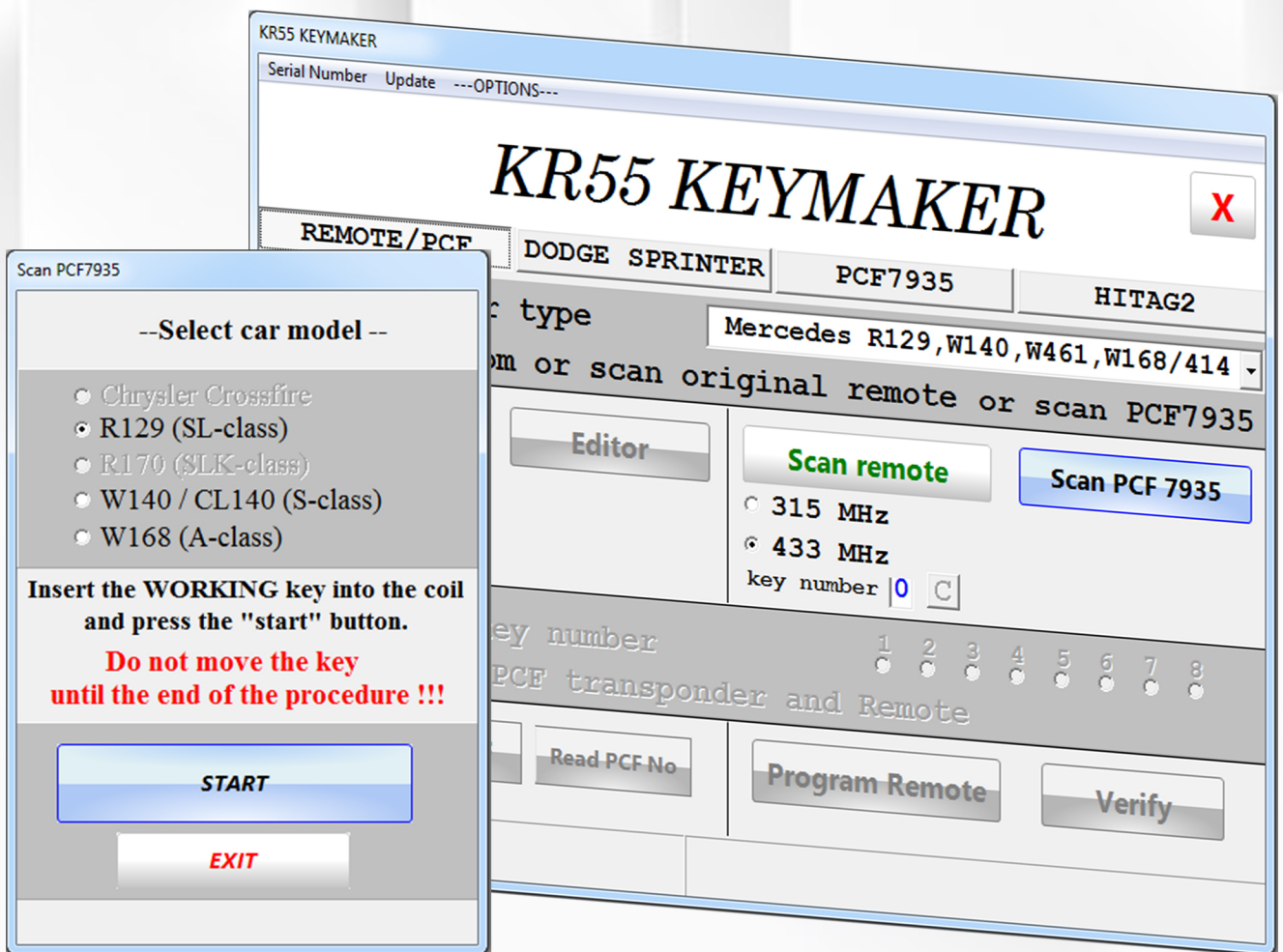


SCAN PCF 7935



Supported Models:

- Mercedes SL Class W(R)129 (Jun 1,1997-2001)
- Mercedes SLK W(R)170 (1996-2004)
- Mercedes S Class W(CL)140 (Jun 1, 1997-1999)
- Mercedes G Class W461 (Jan 1, 1997-2001)
- Chrysler Crossfire (2003-2008)
- Mercedes A Class W168 (1997-2005)
- Mercedes Vaneo W414 (2001-2005)

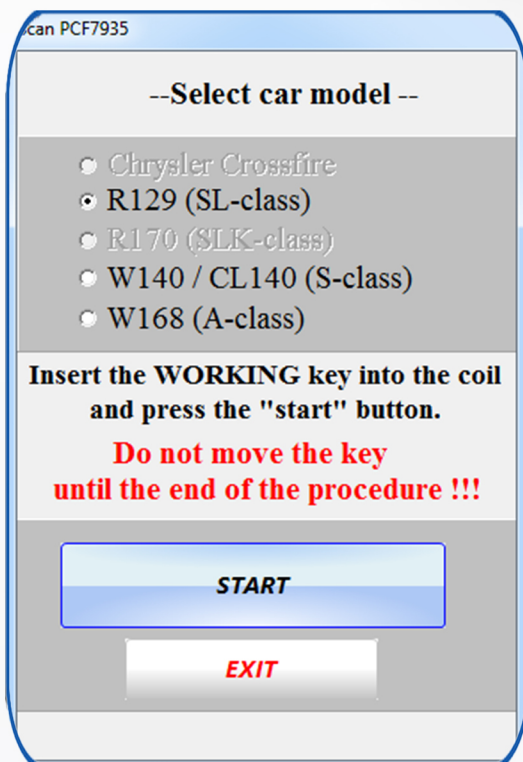
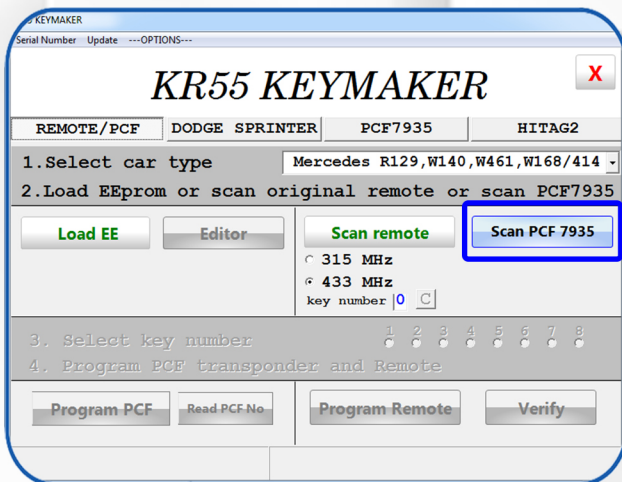
Scan PCF 7935

The "KR55 Keymaker" software from version 2.0 has the "Scan PCF 7935" option.

This function allows you to make a new transponder / remote using a working transponder (without reading EEprom and scanning the working remote).

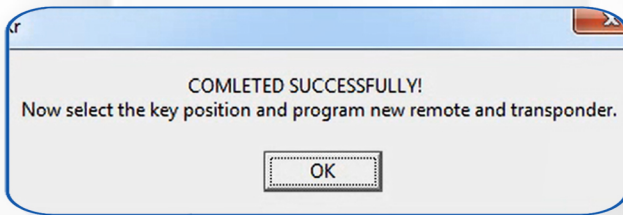
1 - Put original key with transponder into device coil.
Run the software and select the car model.

Next press "Scan PCF 7935"



2 - In the new window, select the car model again and press **Start**.

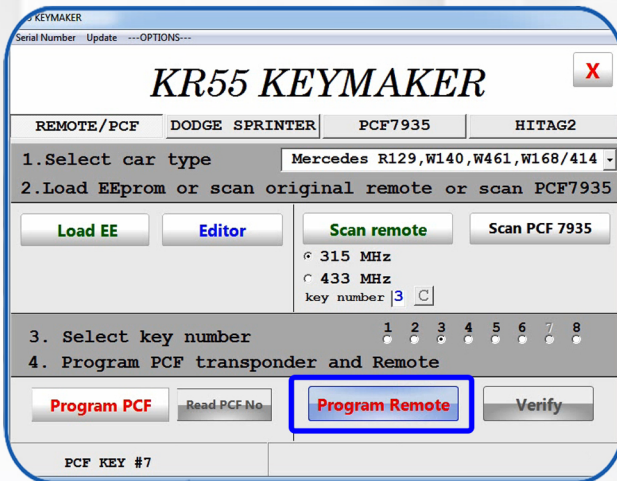
3 - Wait for the process to complete.



Don't touch the key during this time!

When the process is over, a message will inform us about it.

4 - Now select the frequency and the number of the new remote that you want to program and insert the new remote into the device coil. Next press **“Program Remote”**.

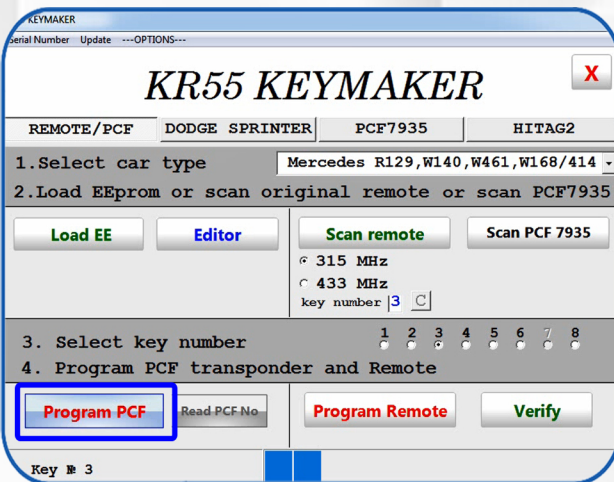
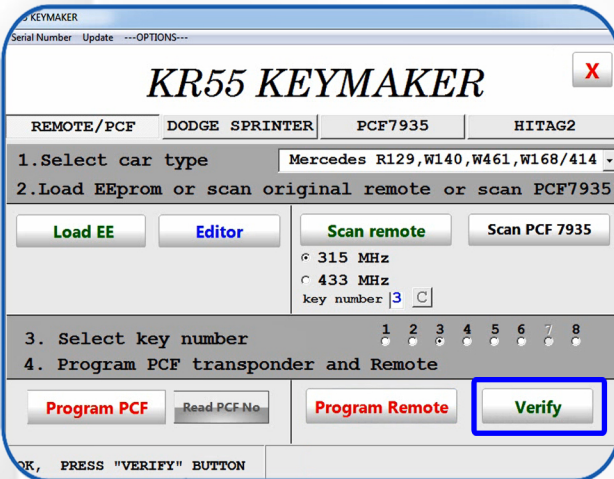


5 - Press and hold unlock button on the remote.

When you hear the sound confirming the correct programming of the remote, you can release the button.



6 - Now press **"Verify"** and press any button on the remote.



7 - Press **"Program PCF"** to program a new transponder.

REMEMBER TO USE THE PCF7935 TRANSPONDER!

8 - The car's running sound will confirm that the transponder has been correctly programmed.

