

How to use

MASTER KEY

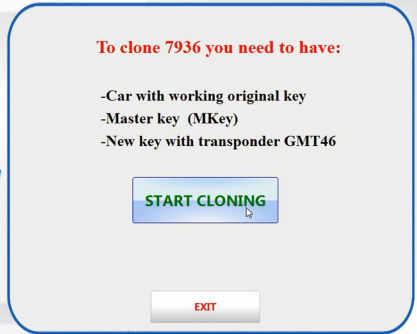
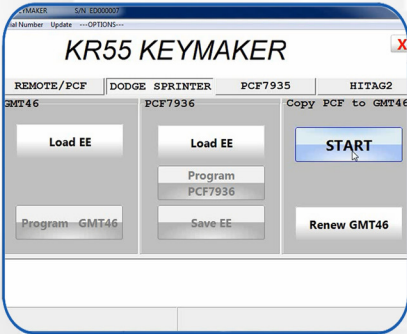


How to use Master Key.

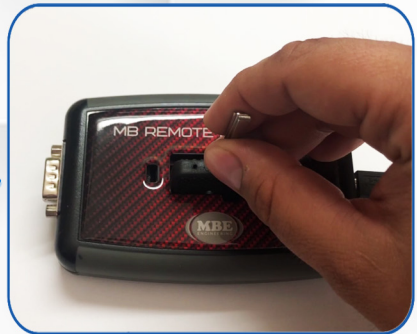
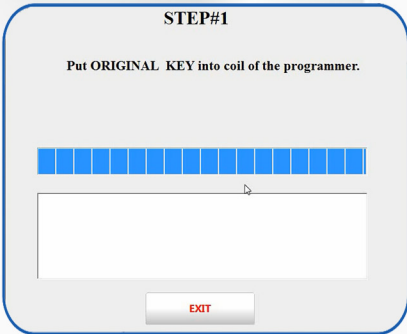
Start KR55 Keymaker software, click **DOGE SPRINTER** tab.

Now click **START** button.

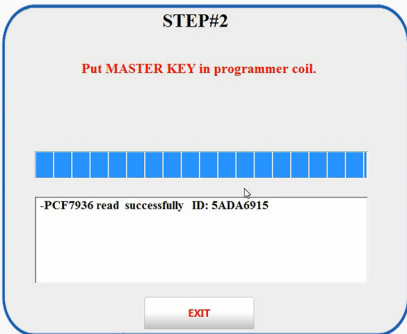
In new window click **START CLONING** button.



STEP#1 - Put **ORIGINAL KEY** into coil of the programmer.

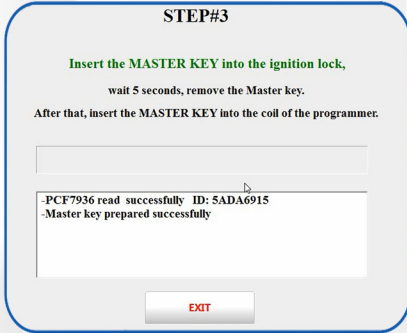


STEP#2 - Put **MASTER KEY** into coil of the programmer.

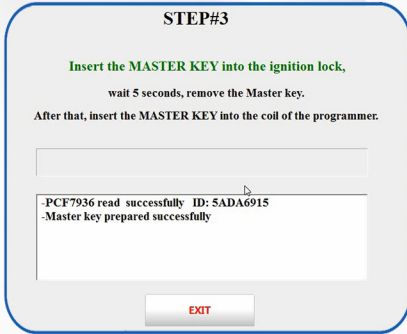


How to use Master Key.

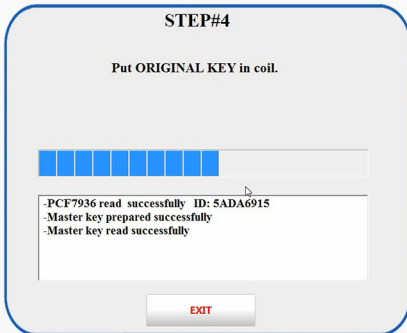
STEP#3 - Insert **MASTER KEY** into the ignition lock.
Wait 5 seconds, remove the **Master Key** (**LED on the MASTER KEY** will turn off or stop blinking).



After that, insert the **MASTER KEY** into the coil of the programmer.



STEP#4 - Put **ORIGINAL KEY** into the coil of the programmer.




How to use Master Key.

STEP#5 - Put new key with **GMT46** into the coil of the programmer.

STEP#5

Put new key with GMT46 in coil.



-PCF7936 read successfully ID: 5ADA6915
-Master key prepared successfully
-Master key read successfully
-Password search was successful

EXIT



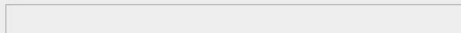
SUCCESSFUL!!

Try start car with new key.

STEP#6

SUCCESSFUL!!

Try start car with new key.



-PCF7936 read successfully ID: 5ADA6915
-Master key prepared successfully
-Master key read successfully
-Password search was successful
-Key copying completed

EXIT