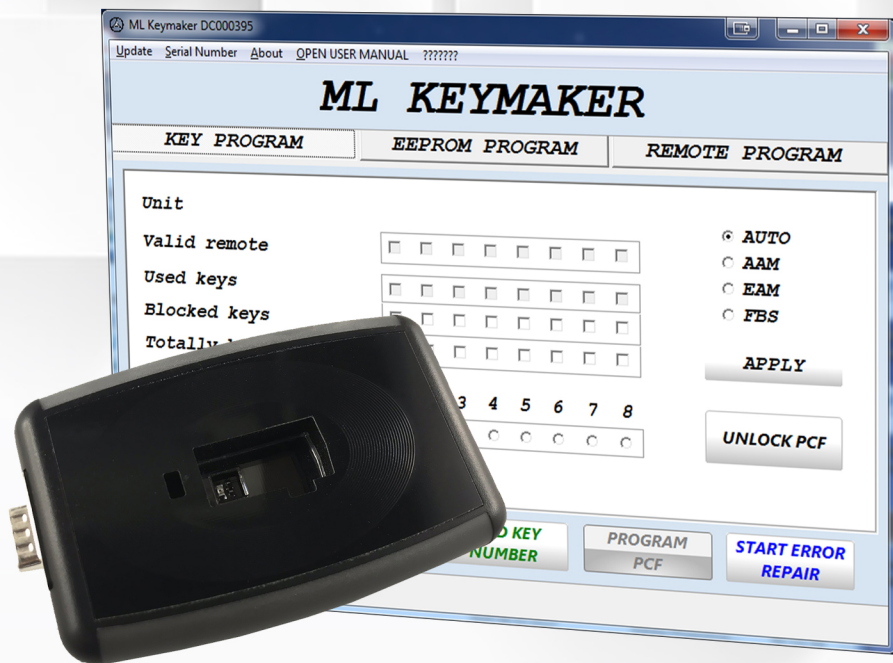


ML KEYMAKER



For: Mercedes ML Class W163

General information.

This device used for transponder and remote key programming of Mercedes ML 163 (W163).

MBE ML keys can be used for programming. Original used Mercedes ML 163 remotes also can be used, but transponders inside of remote keys must be replaced with new PCF7935 transponders.

ML 163 models contain key information along with remote information in AAM module from 1997 to 11 /1999.

Location: In the engine compartment under the fuse and relay module.

ML 163 models made after 11 /1999 contain transponder information in EAM module (in FBS cartridge).

Location: under steering column.

Remote information, however, is still stored in AAM module located in engine compartment.

Programmer connects to the car with OBD cable.



OBD socket location:



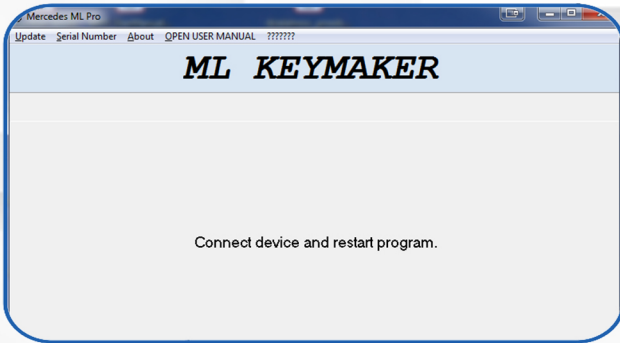
ATTENTION!

*It's not possible to program remote to key position #1.
Also, it's not possible to unlock transponder
after programming it to position #1.
To be on the safe side, never choose key position #1 for programming.*

OK

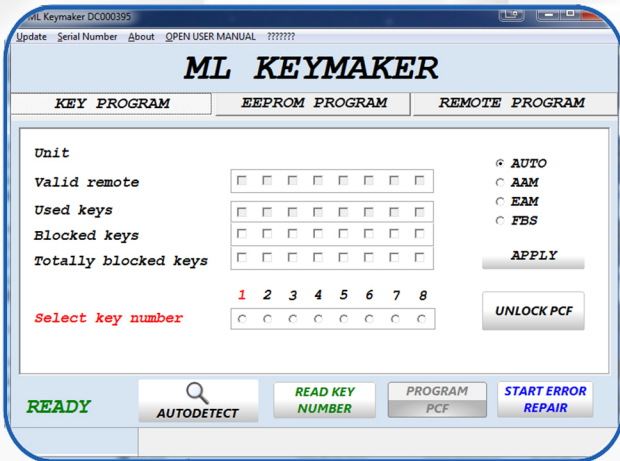
Run the program.

If you see following window:



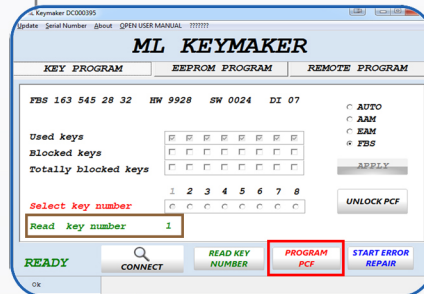
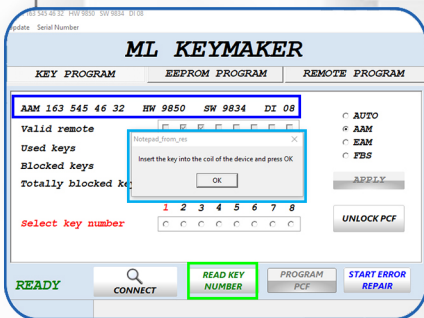
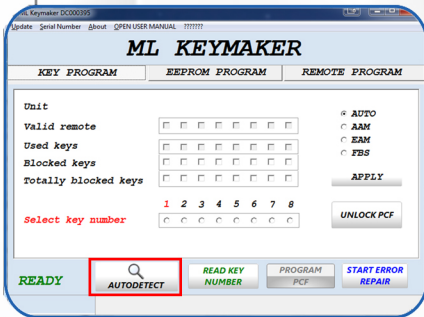
it indicates that Keymaker is not connected to the computer or drivers not installed correctly.

If drivers installed correctly and Keymaker is connected to the computer you will see following window:

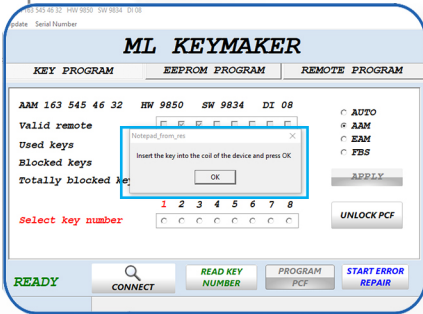


If there is working key for the car.

1. Connect the “Keymaker” device to PC.
2. Connect OBD cable to “Keymaker” device and to OBDII socket in the car.
3. Run the “ML Keymaker” software.
4. Insert a working key in the ignition and turn the ignition on.
5. Click the “AUTODETECT”.
6. After a few seconds you will see the read model and serial number of the module.
7. Click the “READ KEY NUMBER”.
8. When message prompts you remove key from ignition and insert it into programmer’s coil, then click OK.
9. Current key number will be shown. Remember - you can not program new transponder in the same position!
10. Select key position you want to program. Make sure that position is not marked as “Totally blocked key”.
11. Switch ignition on again with the original key.
12. Click “PROGRAM PCF”.



Mercedes ML Class W163

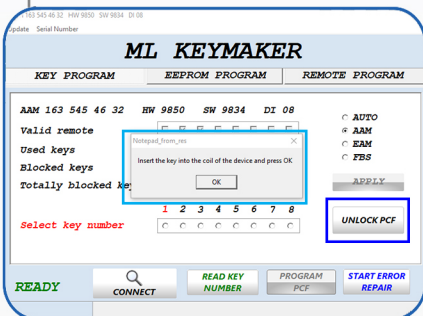


13. When **message** prompts, insert new remote (or transponder) in programmer's coil and click OK.



14. In a few seconds "OK" will appear in lower left corner of ML Keymaker's window. Transponder successfully programmed.

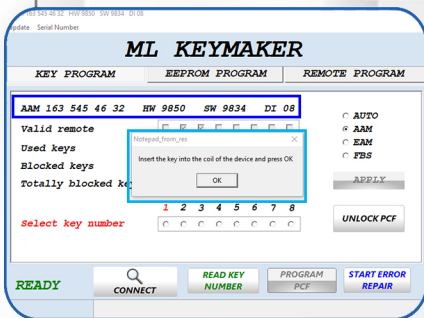
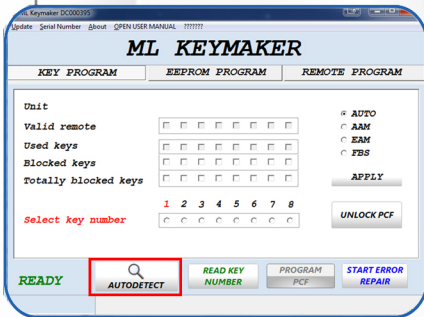
If the new key doesn't work.



1. Turn ignition on with working key.
2. Click "UNLOCK PCF" button.
3. When **message** prompts, insert previously programmed but not working key (transponder) in programmer's coil and then click OK.

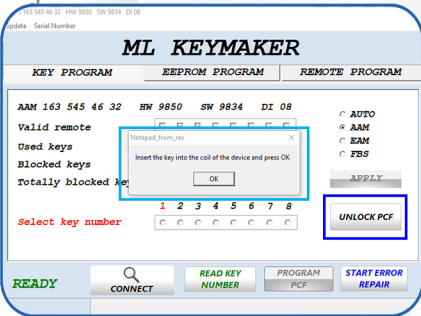
4. In a few seconds OK will appear in the lower left corner of ML Keymaker's window. Transponder is unlocked (renewed). Start programming again.
Note that original Mercedes transponders can not be unlocked.

If there is no working key.



1. Get lock code and cut key blade.
2. Connect Keymaker to PC.
3. Connect OBD cable to Keymaker and to OBDII port.
4. Start ML Keymaker software.
5. Insert previously cut key in ignition, turn ignition on.
6. Click "**AUTODETECT**".
7. After a few seconds model and serial number of the module will appear.
8. Select key position you want to program. Make sure position is not marked as "Totally blocked key".
9. Click "**PROGRAM PCF**".
10. When **message** prompts, insert new remote key (or transponder) in programmer's coil and click OK.
11. In a few seconds OK should appear in the left bottom corner of ML Keymaker.
Transponder is programmed.
Start car with new key to confirm.

If the new key doesn't work.



1. Turn on the ignition with a working key.
2. Click "UNLOCK PCF".
3. When the message appears in the software, insert the new not working remote or transponder into the programmer coil and click "OK".
4. After a few seconds in the lower left corner of the software you will see "OK".

It means that the process is finished and the reansponder is renewed. Now start the whole process all over again.

Note. Mercedes-programmed keys cannot be unlocked.

"START ERROR REPAIR"

Sometimes, if car's battery was discharged or incorrectly replaced, key may stop working, there will be "Start Error" message on the dashboard. Older cars with AAM module more prone to this problem.

To fix the problem connect the Keymaker to the car via OBD, turn ignition on and press the "Start Error Repair" button.

After a few seconds you will see "OK" message in the lower left corner of Keymaker window.

Now car should start normally.

Remote program.

1. Click **"REMOTE PROGRAM"** tab.
2. Disconnect OBD cable from the OBDII socket.
3. Put key with already programmed transponder in ignition and start the car.
4. Re-connect OBD cable.
5. Click **"PROGRAM REMOTE"**
6. When Ready for Key" appears in the lower left corner of software, take the key out of ignition. At this point progress bar should appear at the bottom of the window. Now you have 10 seconds to perform following steps: press and hold lock button on the remote and quickly press unlock button (while holding lock button). Then release all buttons. Lock cycle will confirm successful programming.

