

MB Remote Keymaker

by MBE



** First in the World key programmer for both transponder and remote*

** Works for adding the key and in “all keys lost” situation*

v. 03.2021

Works for:



2007-2018
Dodge Sprinter W(C)906



2003-2008
Chrysler Crossfire



1996-2004
Mercedes SLK Class R170
(all types)



Jun 1, 1997-2001
Mercedes SL Class R129



Jun 1, 1997-1999
Mercedes S-Class W140



Jun 1, 1997-2001
Mercedes G-Class W461



1997-2005
Mercedes A-Class W168



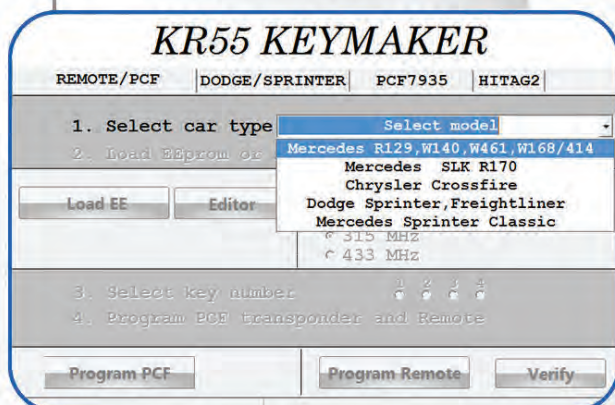
2001-2005
Mercedes Vaneo W414

* Works only with new remote keys manufactured by MBE
(one exception - OEM refurbished key can be used for W163).

1. Adding the key

You must have at least one working remote for the vehicle.
Removal of SKREEM module in this case is not required.

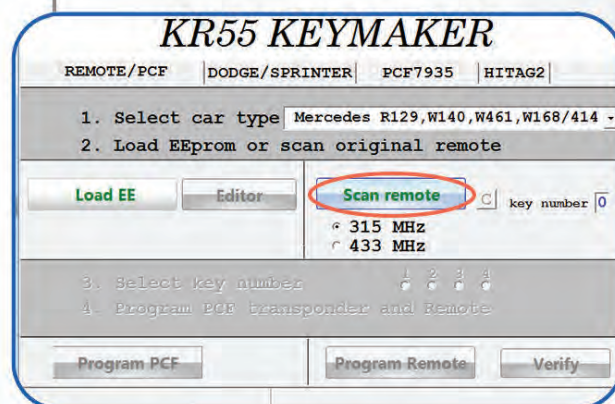
All steps must be completed in order, no steps can be skipped/alterd. Please read carefully.



1. Start KR55 KeyMaker software.

2. Select "PCF/REMOTE" tab.

3. Choose model of the vehicle and frequency of the key. Usually for US and Asian market it's 315 MHz, for the rest of the World - 433 Mhz. After choosing of vehicle type, Keymaker will confirm your choice by voice.



4. Click "Scan remote" button.



5. Hold the original working remote near Keymaker's programming slot and press "Lock" or "Unlock" button on remote. Original key number will be displayed and selection field will become active. Select one of the available key slots.

KR55 KEYMAKER

REMOTE/PCF | DODGE/SPRINTER | PCF7935 | HITAG2

1. Select car type Mercedes R129,W140,W461,W168/414 -
2. Load EEprom or scan original remote

Load EE | Editor | Scan remote | key number 2
315 MHz
433 MHz CLOSE BUTTON

3. Select key number 1 2 3 4
4. Program PCF transponder and Remote

Program PCF | Program Remote | Verify

SCANNED CORRECTLY



KR55 KEYMAKER

REMOTE/PCF | DODGE/SPRINTER | PCF7935 | HITAG2

1. Select car type Mercedes R129,W140,W461,W168/414 -
2. Load EEprom or scan original remote

Load EE | Editor | Scan remote | key number 2
315 MHz
433 MHz CLOSE BUTTON

3. Select key number 1 2 3 4
4. Program PCF transponder and Remote

Program PCF | Program Remote | Verify

Reading

KR55 KEYMAKER

REMOTE/PCF | DODGE/SPRINTER | PCF7935 | HITAG2

1. Select car type Mercedes R129,W140,W461,W168/414 -
2. Load EEprom or scan original remote

Load EE | Editor | Scan remote | key number 2
315 MHz
433 MHz CLOSE BUTTON

3. Select key number 1 2 3 4
4. Program PCF transponder and Remote

Program PCF | Program Remote | Verify

Key # 2

- Click "**PROGRAM REMOTE**" button.
- Put a new remote in KeyMaker's programming coil as shown.
- Press and hold "Unlock" button on the new remote until you will hear confirmation sound. Blue light will flash and message "OK, please click verify button" will appear.
- Click "**VERIFY**" button. Now press any button on the new fob. "OK" message and sound will confirm successful programming.
- Transponder programming.** Put key with already programmed remote in Keymaker's programming coil. Click "**PCF PROGRAM**" button. "OK" message and "start" sound will confirm successful transponder programming.
- Cut the key blade.
- Now go to the vehicle with new key. If key was correctly programmed, vehicle should start. Turn ignition off, pull key out. Quickly press any button on the remote 5-6 times. Insert key in ignition, turn ignition on (do not start). Quick press any button on the remote few times (5-6 times). Turn ignition off, pull the key out. Remote should start working. Check all functions of the key. Programming is complete.

2. All remotes are lost or no working remote available

In this case SKREEM module removal is required. EEprom memory must be read and saved on the computer.

We recommend Orange5, Smok (MBprog) or Carprog programmer with special Click'n Go adapter (corresponding to your SKREEM module model).

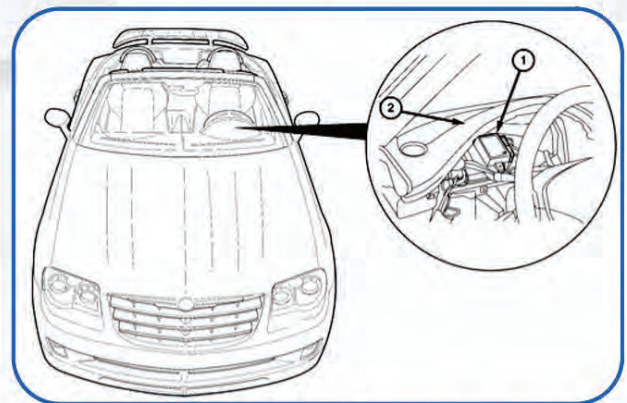
In this case no desoldering required, memory safely can be read.

Of course, you can use another EEprom programmers at your own risk.

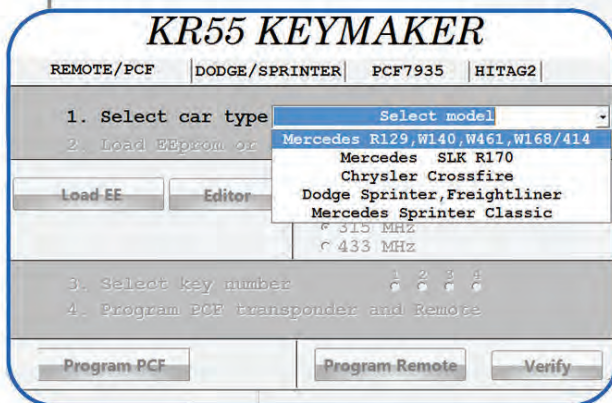
All steps must be completed in order, no steps can be skipped/alterd. Please read carefully.



SKREEM adapter with CarProg



SKREEM location



1. According to EEprom programmer manual, read and save EEprom to your computer.

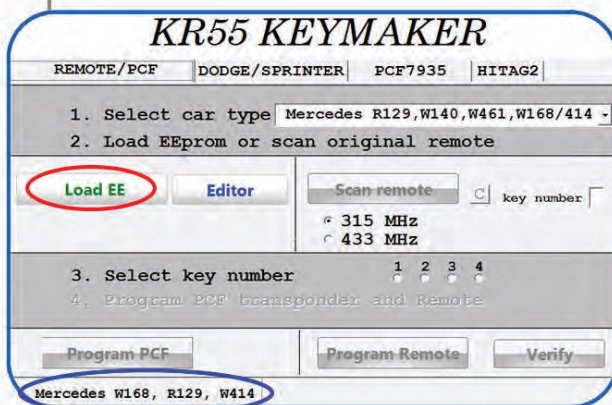
2. Start KR55 Keymaker software.

3. Select your vehicle.

4. Select "PCF/REMOTE" tab.

5. Click "Load EE" button. Select SKREEM EEprom file you saved on step 1.

6. Check if your vehicle's model is properly displayed in the left lower corner of Keymaker's window.



If model is incorrect - EEprom wasn't read properly. Read and save EEprom again using Orange5, Smok (MBprog) or Carprog with proper Click'n Go adapter and start again from step 2.

Mercedes R129, W140, W461, W168, W414

KR55 KEYMAKER

REMOTE/PCF | DODGE/SPRINTER | PCF7935 | HITAG2

1. Select car type Mercedes R129,W140,W461,W168/414 -
2. Load EEprom or scan original remote

Load EE | Editor | Scan remote | key number 2
315 MHz
433 MHz

3. Select key number 1 2 3 4
4. Program PCF transponder and Remote

Program PCF | Program Remote | Verify

Mercedes W168, R129, W414



KR55 KEYMAKER

REMOTE/PCF | DODGE/SPRINTER | PCF7935 | HITAG2

1. Select car type Mercedes R129,W140,W461,W168/414 -
2. Load EEprom or scan original remote

Load EE | Editor | Scan remote | key number 2
315 MHz
433 MHz

3. Select key number 1 2 3 4
4. Program PCF transponder and Remote

Program PCF | Program Remote | Verify

Reading

KR55 KEYMAKER

REMOTE/PCF | DODGE/SPRINTER | PCF7935 | HITAG2

1. Select car type Mercedes R129,W140,W461,W168/414 -
2. Load EEprom or scan original remote

Load EE | Editor | Scan remote | key number 2
315 MHz
433 MHz

3. Select key number 1 2 3 4
4. Program PCF transponder and Remote

Program PCF | Program Remote | Verify

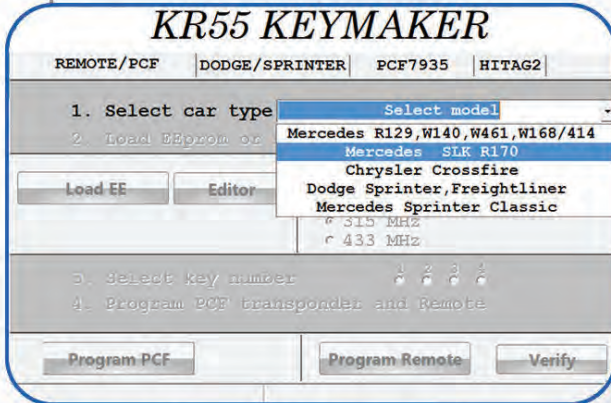
Key # 2

7. If vehicle's model displayed correctly, select one of the available key slots.
8. Put a new remote in KeyMaker's programming coil as shown.
9. Click "**PROGRAM REMOTE**" button.
10. Press and hold "Unlock" button on the new remote until you will hear confirmation sound. Blue light will flash and message "OK, please click verify button" will appear.
11. Click "**VERIFY**" button. Now press any button on the new fob. "OK" message and sound will confirm successful programming.
12. Transponder programming. Put key with already programmed remote in Keymaker's programming coil. Click "**PCF PROGRAM**" button. "OK" message and "start" sound will confirm successful transponder programming.
13. Cut the key blade.
14. Now go to the vehicle with new key. If key was correctly programmed, vehicle should start. Turn ignition off, pull key out. Quickly press any button on the remote 5-6 times. Insert key in ignition, turn ignition on (do not start). Quick press any button on the remote few times (5-6 times). Turn ignition off, pull the key out. Remote should start working. Check all functions of the key. Programming is complete.

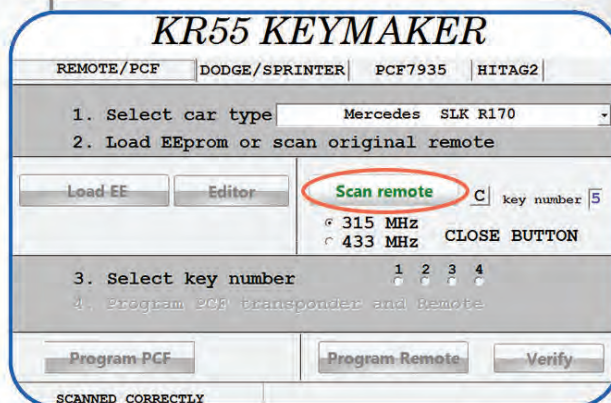
1. Adding the key

You must have at least one working remote for the vehicle.
Removal of SKREEM module in this case is not required.

All steps must be completed in order, no steps can be skipped/alterd. Please read carefully.



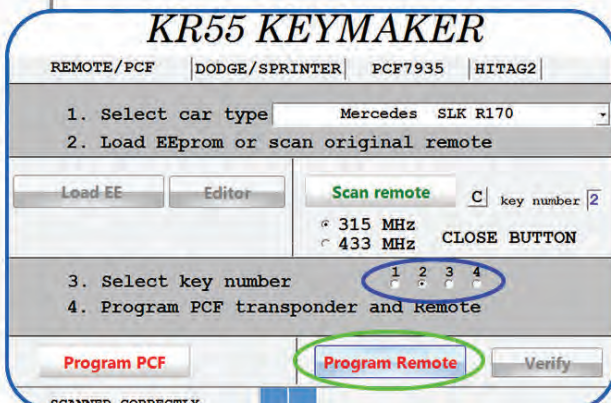
1. Start KR55 KeyMaker software.
2. Select "PCF/REMOTE" tab.
3. Choose model of the vehicle and frequency of the key. Usually for US and Asian market it's 315 MHz, for the rest of the World - 433 Mhz. After choosing of vehicle type, Keymaker will confirm your choice by voice.



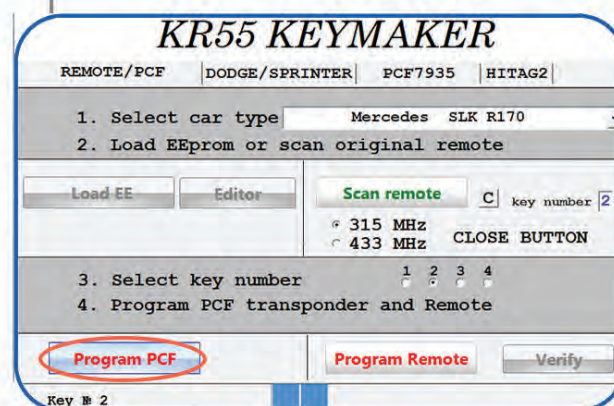
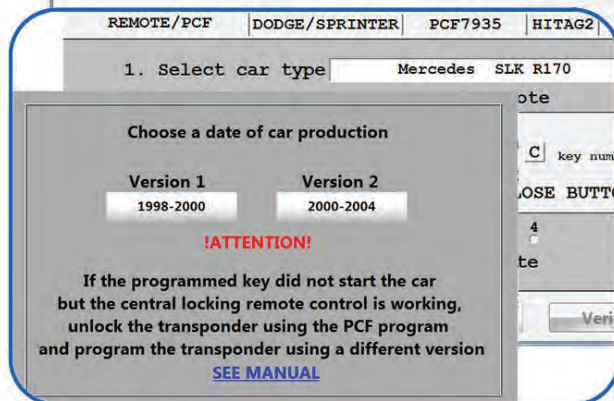
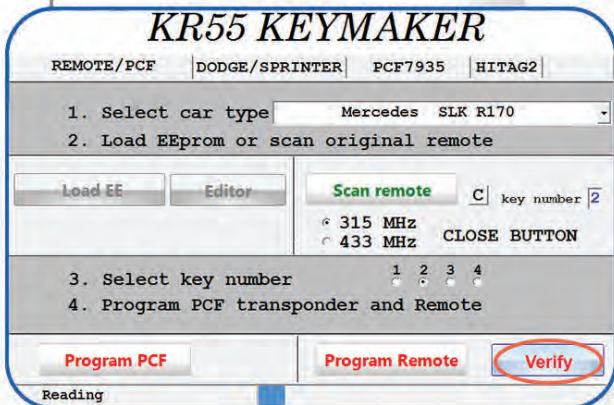
4. Click "Scan remote" button.



5. Hold the original working remote near Keymaker and press "Unlock" button on remote. Original key number will be displayed and selection field will become active. Select one of the available key slots.
6. Click "PROGRAM REMOTE" button.
7. Put a new remote in KeyMaker's programming coil as shown.
8. Press and hold "Unlock" button on the new remote until you will hear confirmation sound. Blue light will flash and message "OK, please click verify button" will appear.



Mercedes SLK R170



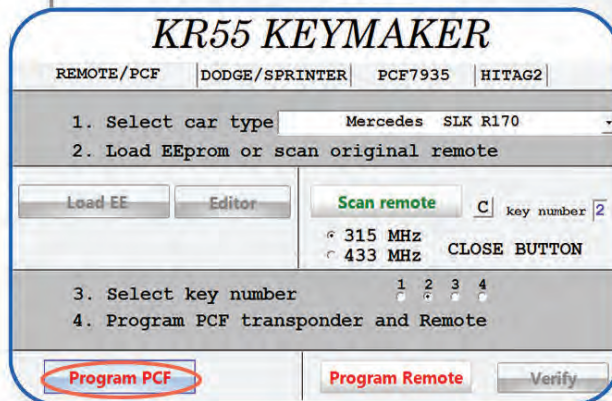
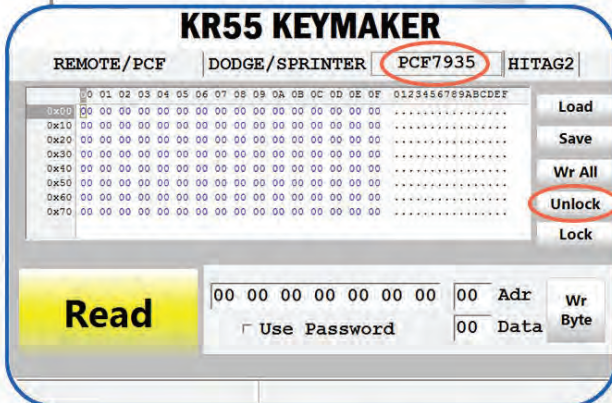
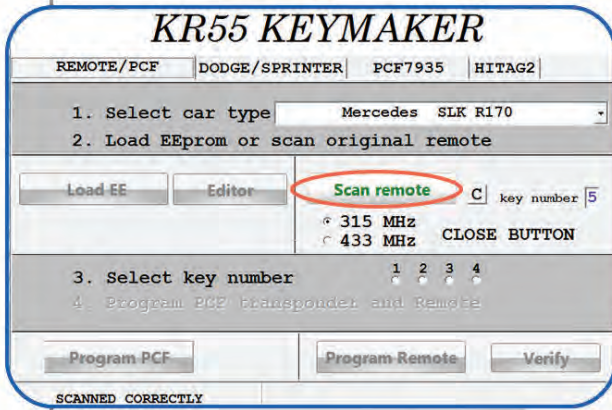
9. Click **“VERIFY”** button. Now press any button on the new fob. **“OK”** message and sound will confirm successful programming.

10. Transponder programming. Put key with already programmed remote in Keymaker's programming coil. Click **“PCF PROGRAM”** button. **Please read message which will appear and choose one of the versions which you think is correct. If programmed key will not start the car you will correct it later.** **“OK”** message and **“start”** sound will confirm successful transponder programming.

11. Cut the key blade.

12. Now go to the vehicle with new key. If key was correctly programmed and version is correct, vehicle should start. If car doesn't start - go to step 13. If car starts - turn ignition off, pull key out. Quickly press any button on the remote 5-6 times. Insert key in ignition, turn ignition on (do not start). Quickly press any button on the remote few times (5-6 times). Turn ignition off, pull the key out. Remote should start working. Check all functions of the key. Programming is complete.

Mercedes SLK R170



13. Transponder unlocking.
If you chose incorrect PCF version, transponder should be unlocked and then programmed again.

On "PCF/REMOTE" tab of Keymaker click "Scan Remote" button. Click any button on the remote. Key number will be displayed and selection field will become active.

14. Insert key in Keymaker's programming coil.

15. Click "PCF7935" tab and click "Unlock" button on this tab.

16. Within 10 seconds you will see "OK" message. Transponder is successfully unlocked.
Now return to step 10 and select different version for transponder programming.

2. All remotes are lost or no working remote available

In this case SKREEM module removal is required. EEprom memory must be read and saved on the computer.

We recommend Orange5, Smok (MBprog) or Carprog programmer with special Click'n Go adapter (corresponding to your SKREEM module model).

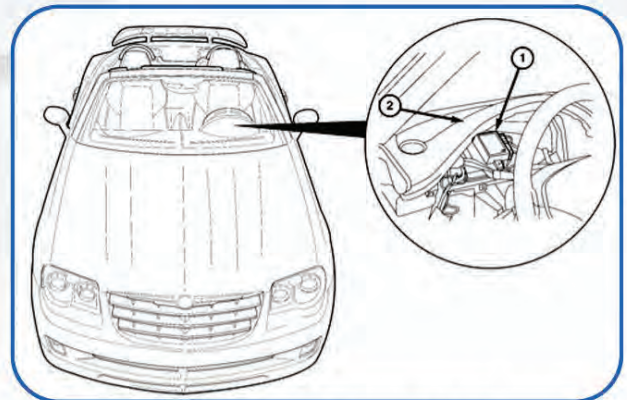
In this case no desoldering required, memory safely can be read.

Of course, you can use another EEprom programmers at your own risk.

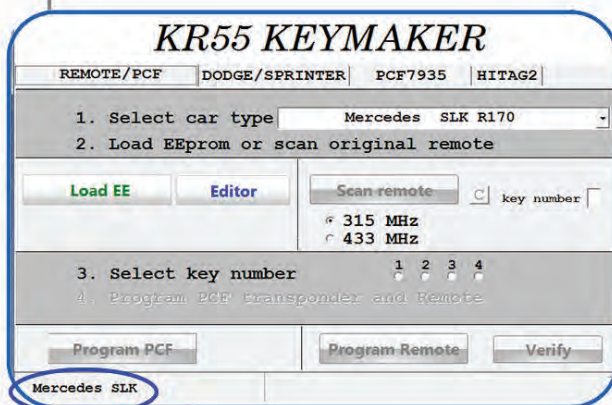
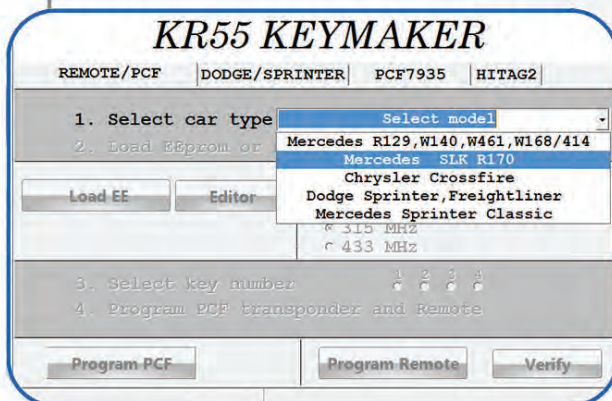
All steps must be completed in order, no steps can be skipped/alterd. Please read carefully.



SKREEM adapter with CarProg



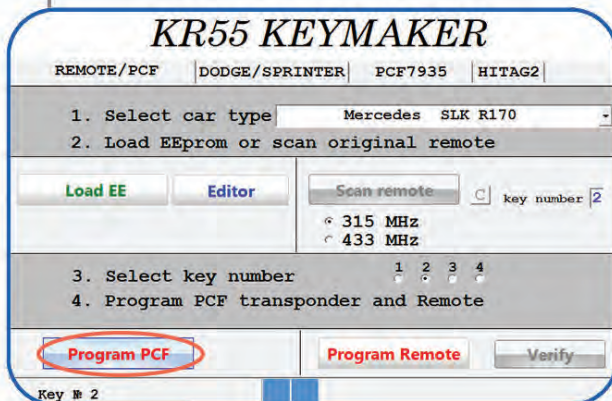
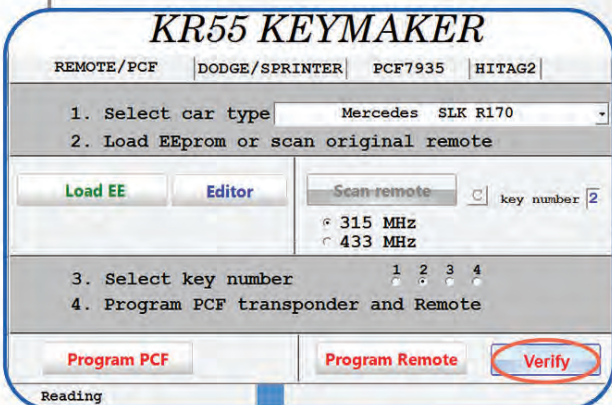
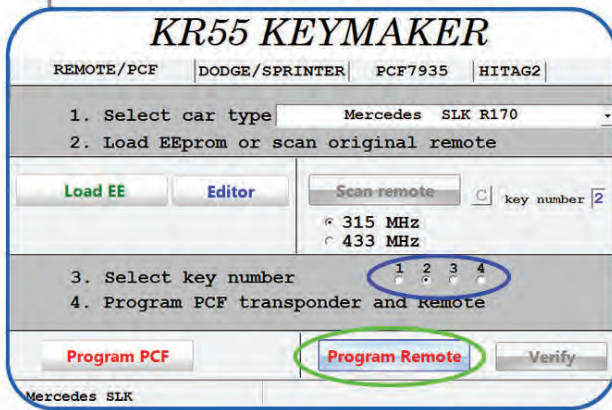
SKREEM location



1. According to EEprom programmer manual, read and save EEprom to your computer.
2. Start KR55 Keymaker software.
3. Select your vehicle.
4. Select "PCF/REMOTE" tab.
5. Click "Load EE" button. Select SKREEM EEprom file you saved on step 1.
6. Check if your vehicle's model is properly displayed in the left lower corner of Keymaker's window.

If model is incorrect - EEprom wasn't read properly. Read and save EEprom again using Orange5, Smok (MBprog) or Carprog with proper Click'n Go adapter and start again from step 2.

Mercedes SLK R170

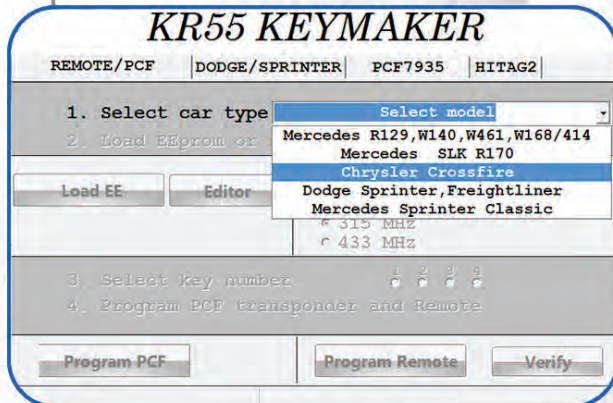


7. If vehicle's model displayed correctly, select one of the available key slots.
8. Put a new remote in KeyMaker's programming coil as shown.
9. Click "PROGRAM REMOTE" button.
10. Press and hold "Unlock" button on the new remote until you will hear confirmation sound. Blue light will flash and message "OK, please click verify button" will appear.
11. Click "VERIFY" button. Now press any button on the new fob. "OK" message and sound will confirm successful programming.
12. Transponder programming. Put key with already programmed remote in Keymaker's programming coil. Click "PCF PROGRAM" button. "OK" message and "start" sound will confirm successful transponder programming.
13. Cut the key blade.
14. Now go to the vehicle with new key. If key was correctly programmed, vehicle should start. Turn ignition off, pull key out. Quickly press any button on the remote 5-6 times. Insert key in ignition, turn ignition on (do not start). Quickly press any button on the remote few times (5-6 times). Turn ignition off, pull the key out. Remote should start working. Check all functions of the key. Programming is complete.

1. Adding the key

You must have at least one working remote for the vehicle.
Removal of SKREEM module in this case is not required.

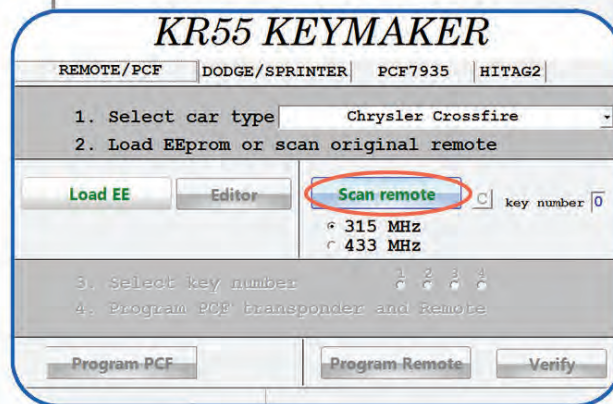
All steps must be completed in order, no steps can be skipped/alterd. Please read carefully.



1. Start KR55 KeyMaker software.

2. Select "PCF/REMOTE" tab.

3. Choose model of the vehicle and frequency of the key. Usually for US and Asian market it's 315 MHz, for the rest of the World - 433 Mhz. After choosing of vehicle type, Keymaker will confirm your choice by voice.

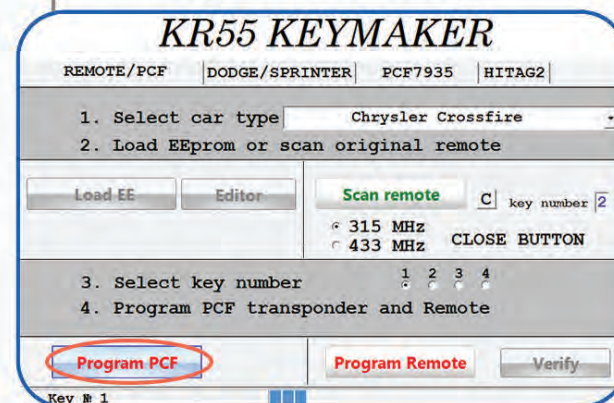
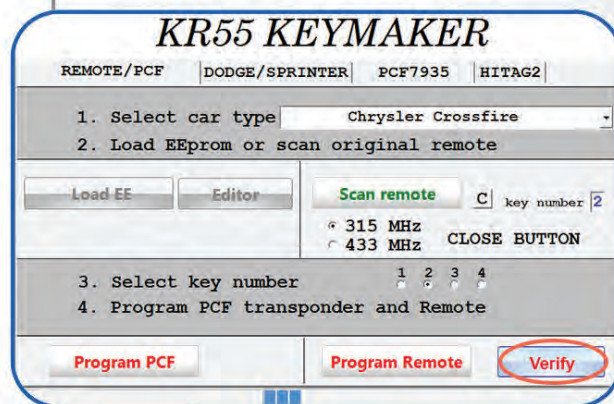
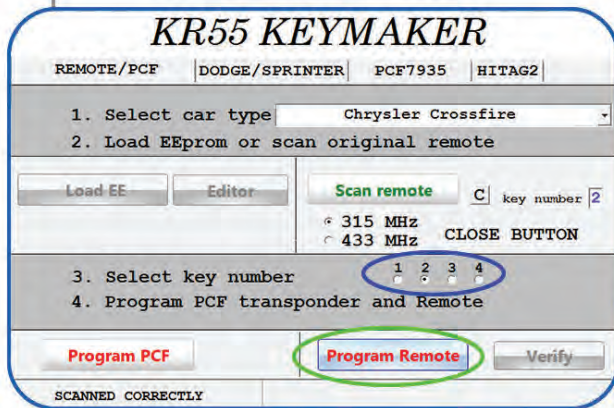


4. Click "Scan remote" button.



5. Hold the original working remote near Keymaker and press "Lock" or "Unlock" button on remote. Original key number will be displayed and selection field will become active. Select one of the available key slots.

Chrysler Crossfire



6. Click “PROGRAM REMOTE” button.
7. Put a new remote in KeyMaker's programming slot as shown.
8. Press and hold “Unlock” button on the new remote until you will hear confirmation sound. Blue light will flash and message “OK, please click verify button” will appear.
9. Click “VERIFY” button. Now press any button on the new fob. “OK” message and sound will confirm successful programming.
10. Transponder programming. Put key with already programmed remote in Keymaker's programming coil. Click “PCF PROGRAM” button. “OK” message and “start” sound will confirm successful transponder programming.
11. Cut the key blade.
12. Now go to the vehicle with new key. If key was correctly programmed, vehicle should start. Turn ignition off, pull key out. Quickly press any button on the remote 5-6 times. Insert key in ignition, turn ignition on (do not start). Quickly press any button on the remote few times (5-6 times). Turn ignition off, pull the key out. Remote should start working. Check all functions of the key. Programming is complete.

2. All remotes are lost or no working remote available

In this case SKREEM module removal is required. EEprom memory must be read and saved on the computer.

We recommend Orange5, Smok (MBprog) or Carprog programmer with special Click'n Go adapter (corresponding to your SKREEM module model).

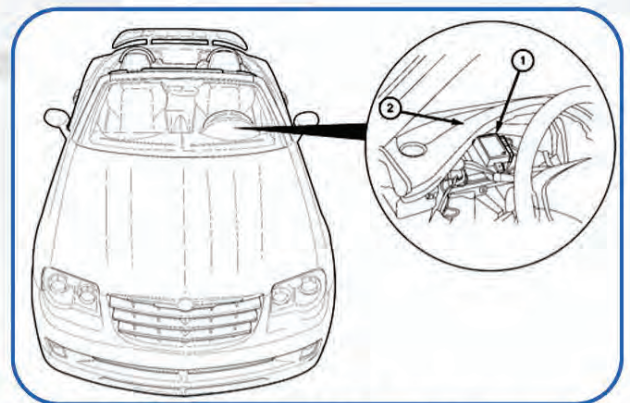
In this case no desoldering required, memory safely can be read.

Of course, you can use another EEprom programmers at your own risk.

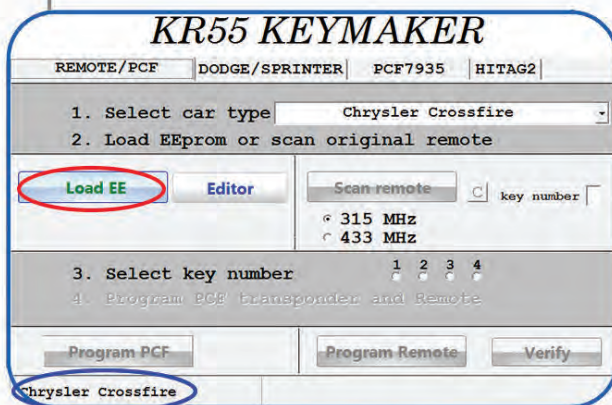
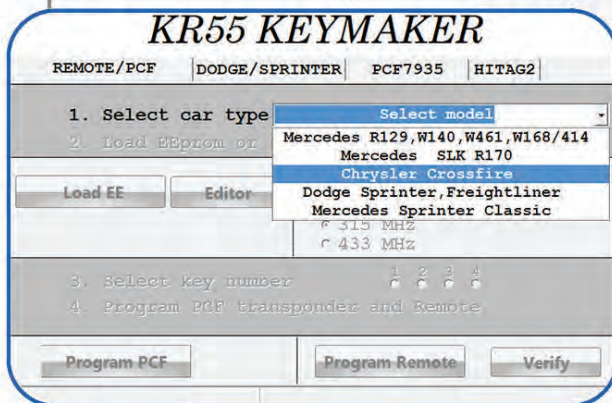
All steps must be completed in order, no steps can be skipped/alterd. Please read carefully.



SKREEM adapter with CarProg



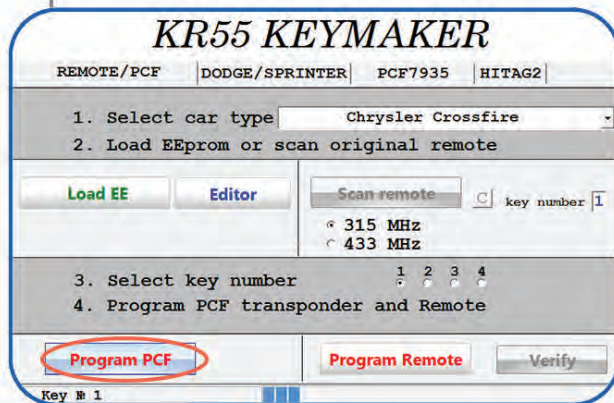
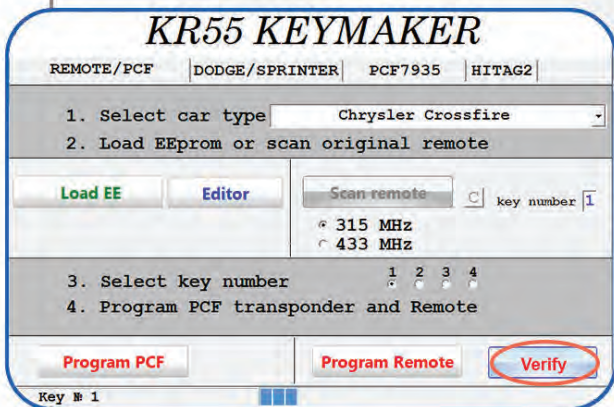
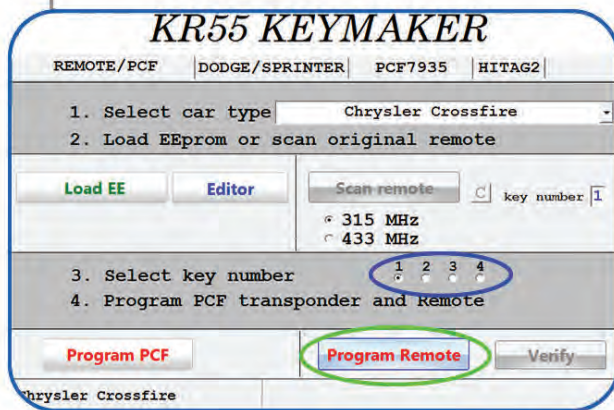
SKREEM location



1. According to EEprom programmer manual, read and save EEprom to your computer.
2. Start KR55 Keymaker software.
3. Select your vehicle.
4. Select "PCF/REMOTE" tab.
5. Click "Load EE" button. Select SKREEM EEprom file you saved on step 1.
6. Check if your vehicle's model is properly displayed in the left lower corner of Keymaker's window.

If model is incorrect - EEprom wasn't read properly. Read and save EEprom again using Orange5, Smok (MBprog) or Carprog with proper Click'n Go adapter and start again from step 2.

Chrysler Crossfire



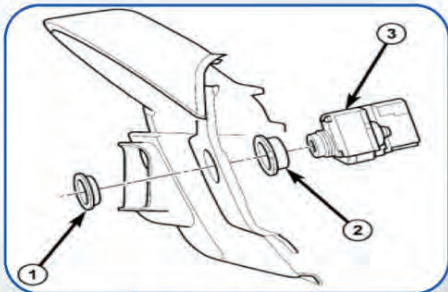
7. If vehicle's model displayed correctly, select one of the available key slots.
8. Put a new remote in KeyMaker's programming coil as shown.
9. Click "Program Remote" button.
10. Press and hold "Unlock" button on the new remote until you will hear confirmation sound. Blue light will flash and message "OK, please click verify button" will appear.
11. Click "VERIFY" button. Now press any button on the new fob. "OK" message and sound will confirm successful programming.
12. Transponder programming. Put key with already programmed remote in Keymaker's programming coil. Click "PCF PROGRAM" button. "OK" message and "start" sound will confirm successful transponder programming.
13. Cut the key blade.
14. Now go to the vehicle with new key. If key was correctly programmed, vehicle should start. Turn ignition off, pull key out. Quickly press any button on the remote 5-6 times. Insert key in ignition, turn ignition on (do not start). Quickly press any button on the remote few times (5-6 times). Turn ignition off, pull the key out. Remote should start working. Check all functions of the key. Programming is complete.

Dodge Sprinter, Freightliner

1. Adding the key, easiest way.

Programming new remote and transponder clone.

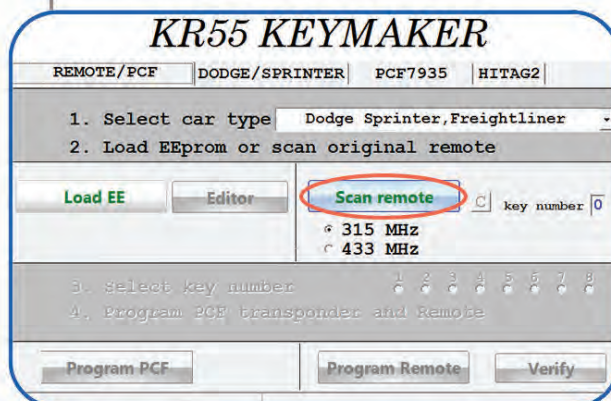
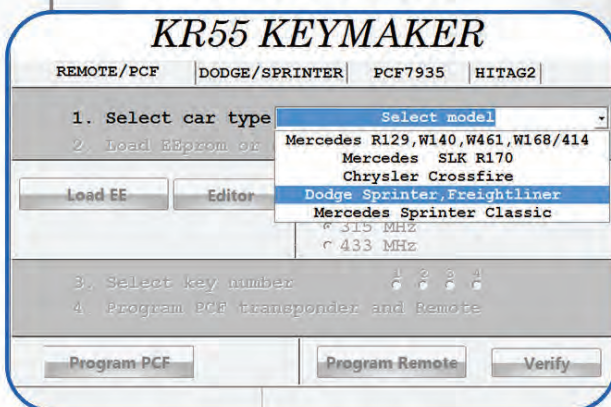
New remote with GMT46 transponder and
“GMT46 Black Master Key” must be used.



EIS location

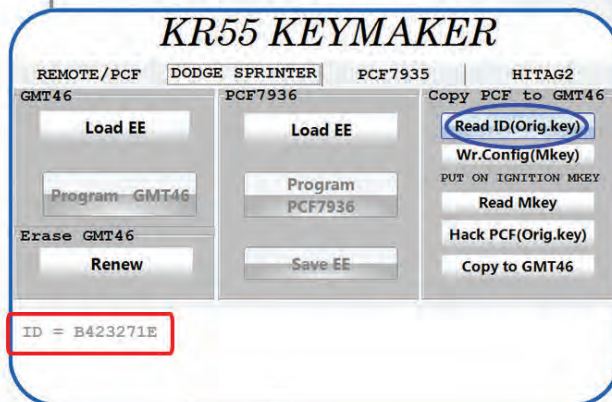
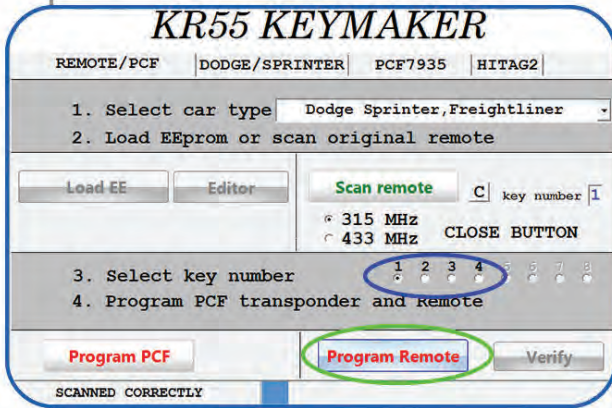
You must have at least one working remote for the vehicle. Removal of EIS module in this case is **not** required.

“GMT46 Black Master Key” is reusable, never cut it or give to the customer! All steps must be completed in order, no steps can be skipped/alterred. Please read carefully.



1. Start KR55 KeyMaker software.
2. Select “PCF/REMOTE” tab.
3. Choose model of the vehicle and frequency of the key. Usually for US and Asian market it's 315 MHz, for the rest of the World - 433 Mhz. After choosing of vehicle type, Keymaker will confirm your choice by voice.
4. Click “Scan remote” button.
5. Hold the original working remote near Keymaker and press “Lock” or “Unlock” button on remote. Original key number will be displayed and selection field will become active. Select one of available key slots.

Dodge Sprinter, Freightliner



6. Click “**Program Remote**” button.

7. Put a new remote with GMT46 transponder in KeyMaker's programming coil as shown.

8. Press and hold “Unlock” button on the new remote until you will hear confirmation sound. Blue light will flash and message “OK, please click verify button” will appear.

9. Click “**VERIFY**” button. Now press any button on the new remote. “OK” message and sound will confirm successful programming.

10. **Transponder clone.**

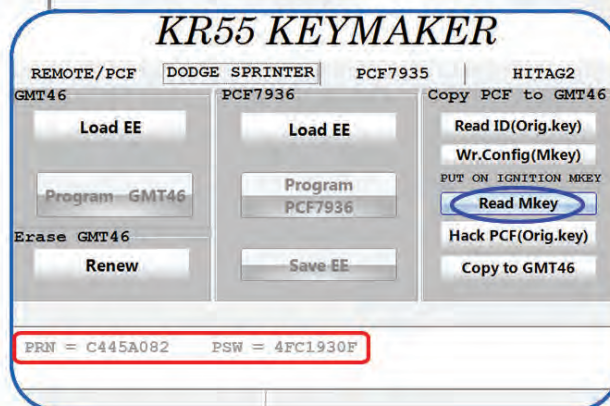
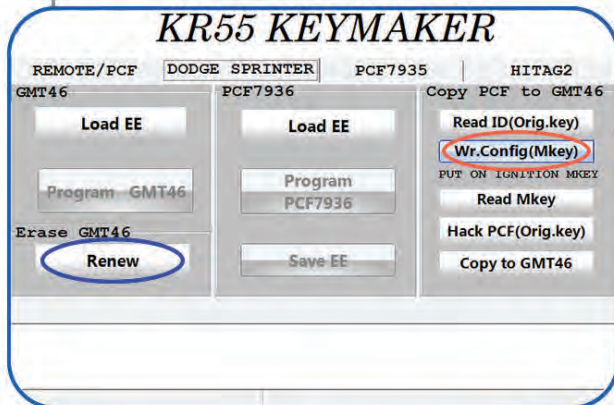
Select “DODGE/SPRINTER” tab.

11. Put original key with PCF7936 in Keymaker's programming slot. Click “**Read ID**” button.

Transponder's ID will be shown.

12. Put “GMT46 Black Master Key” in KeyMaker's programming coil.

Dodge Sprinter, Freightliner



13. Click “Renew” button and then click “Wr.Config(Mkey)” button.
14. Now go to the van with this prepared key and put it in ignition for 5 seconds (**no cutting or turning the key in ignition required!**).
15. Pull the key out and put it in Keymaker's programming coil. Click “Read Mkey” button. Status should be shown (numbers on the bottom). If all numbers are the “0”, “1” or just “Error” message appears, go to step 10 and repeat process again.
16. If status shown correctly (not all “0” or “1”), then put original (working) key in Keymaker's programming slot. Click “Hack PCF(Orig.key)” button. It will take few seconds, status will be shown during process. Wait until “Success” will appear.
17. Now put new remote with GMT46 transponder and programmed earlier remote in Keymaker's programming coil.

18. Click “Copy to GMT46” button. “Successful” message will appear on the bottom.

19. Cut the key blade

20. Now go to the vehicle with new key. If key was correctly programmed, vehicle should start. Turn ignition off, pull key out. Quickly press any button on the remote 5-6 times. Insert key in ignition, turn ignition on (do not start). Quickly press any button on the remote few times (5-6 times). Turn ignition off, pull the key out. Remote should start working. Check all functions of the key. Programming is complete.

Dodge Sprinter, Freightliner

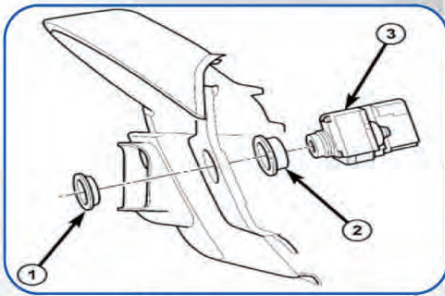
1. Adding the key (remote).

Programming new remote and new transponder programming (if you don't have the "GMT46 Black Master Key").

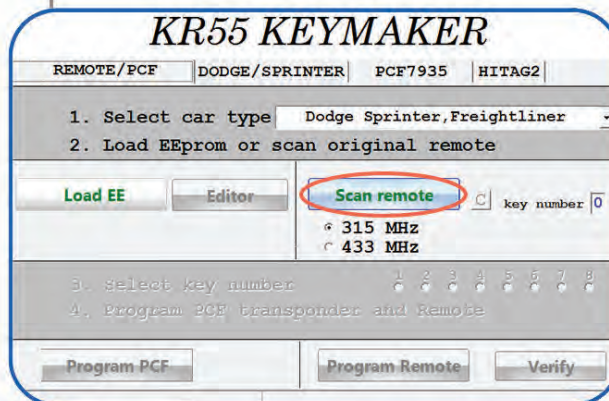
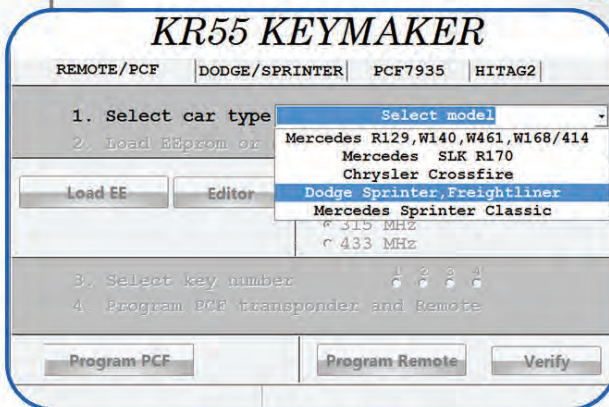
New remote with GMT46 or PCF7936 transponder required.

You must have at least one working remote for the vehicle. Removal of EIS module in this case is required. EEprom memory must be read and saved on computer.

We recommend Smok (MBprog) programmer for proper result, but you can use other EEprom reader at your own risk.



EIS location



All steps must be completed in order, no steps can be skipped/altered. Please read carefully.

1. Start KR55 KeyMaker software.
2. Select "PCF/REMOTE" tab.
3. Choose model of the vehicle and frequency of the key. Usually for US and Asian market it's 315 MHz, for the rest of the World - 433 Mhz. After choosing of vehicle type, Keymaker will confirm your choice by voice.
4. Click "Scan remote" button.
5. Hold the original working remote near Keymaker and press "Lock" or "Unlock" button on remote. Original key number will be displayed and selection field will become active. Select one of available key slots.

Dodge Sprinter, Freightliner

KR55 KEYMAKER
REMOTE/PCF | DODGE/SPRINTER | PCF7935 | HITAG2

1. Select car type Dodge Sprinter, Freightliner
2. Load EEPROM or scan original remote

Load EE Editor Scan remote C key number 1
315 MHz
433 MHz CLOSE BUTTON

3. Select key number 1 2 3 4 5 6 7 8
4. Program PCF transponder and Remote

Program PCF Program Remote Verify

SCANNED CORRECTLY

KR55 KEYMAKER
REMOTE/PCF | DODGE/SPRINTER | PCF7935 | HITAG2

1. Select car type Dodge Sprinter, Freightliner
2. Load EEPROM or scan original remote

Load EE Editor Scan remote C key number 1
VIN:WD3BE8CC7E5833765
315 MHz
433 MHz

3. Select key number 1 2 3 4 5 6 7 8
4. Program PCF transponder and Remote

Program PCF Program Remote Verify

Key # 1

KR55 KEYMAKER
REMOTE/PCF | DODGE SPRINTER | PCF7935 | HITAG2

GMT46 PCF7936 Copy PCF to GMT46

Load EE LOADED OK! Program GMT46
Load EE LOADED OK! Program PCF7936
Read ID(Orig.key) Wr.Config(Mkey)
PUT ON IGNITION MKEY Read Mkey
Erase GMT46 Hack PCF(Orig.key)
Renew Save EE Copy to GMT46

You must used PCF7936 or GMT46 transponder for programming

KR55 KEYMAKER
REMOTE/PCF | DODGE/SPRINTER | PCF7935 | HITAG2

GMT46 PCF7936 Copy PCF to GMT46

Load EE LOADED OK! Program GMT46
Load EE LOADED OK! Program PCF7936
Read ID(Orig.key) Wr.Config(Mkey)
PUT ON IGNITION MKEY Read Mkey
Erase GMT46 Hack PCF(Orig.key)
Renew Save EE Copy to GMT46

WR & Verify Ok
Dump EE Changed

6. Click “Program Remote” button.
7. Put a new remote in KeyMaker's programming coil as shown.
8. Press and hold “Unlock” button on the new remote until you will hear confirmation sound. Blue light will flash and message “OK, please click verify button” will appear.
9. Click “VERIFY” button. Now press any button on the new remote. “OK” message and sound will confirm successful programming.
10. According to EEPROM programmer manual, read and save EEPROM to your computer.
11. Click “Load EE” button. Select EEPROM file from the EIS.
12. Select one of the available key numbers in “Select key number” field.
13. If new key has GMT46 chip, click “Program GMT46” button. Once message “OK! Rewrite all chip” appears, chip programming is complete.
14. If new key has PCF7936 chip, click “Program PCF7936” button. In a few seconds “WR and Verify OK. Dump EE changed” will appear. Now you need to rewrite modified dump back to EIS module, otherwise new key won't work.
15. Click “Save EE” button to save new EEPROM on your computer.

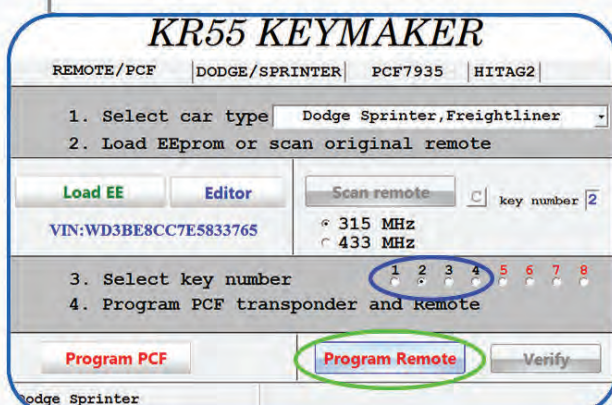
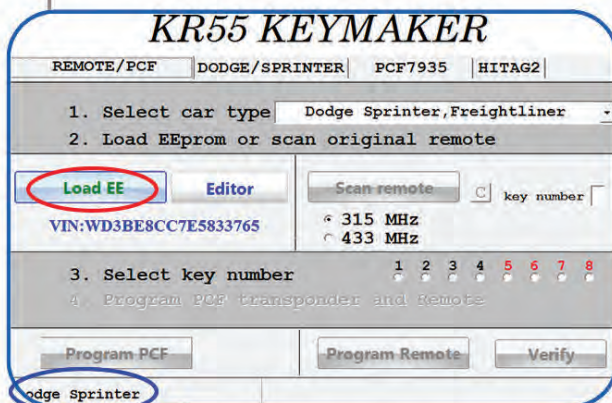
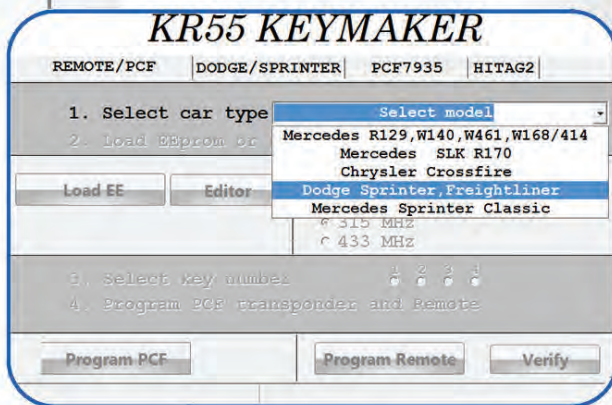
Dodge Sprinter, Freightliner

16. Cut the key blade.

17. Now go to the vehicle with new key. If key was correctly programmed, vehicle should start. Turn ignition off, pull key out. Quickly press any button on the remote 5-6 times. Insert key in ignition, turn ignition on (do not start). Quickly press any button on the remote few times (5-6 times). Turn ignition off, pull the key out. Remote should start working. Check all functions. Programming is complete.

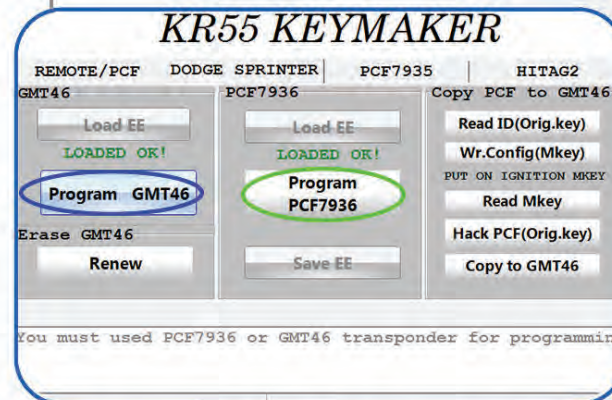
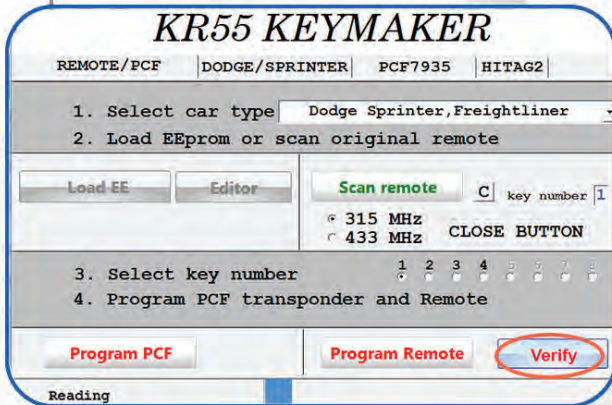
1. All keys lost. New remote with GMT46 or PCF7936 transponder required. Removal of EIS module in this case is required. EEprom memory must be read and saved on computer. We recommend Smok (MBprog) programmer for proper result, but you can use other EEprom reader at your own risk.

All steps must be completed in order, no steps can be skipped/altered. Please read carefully.



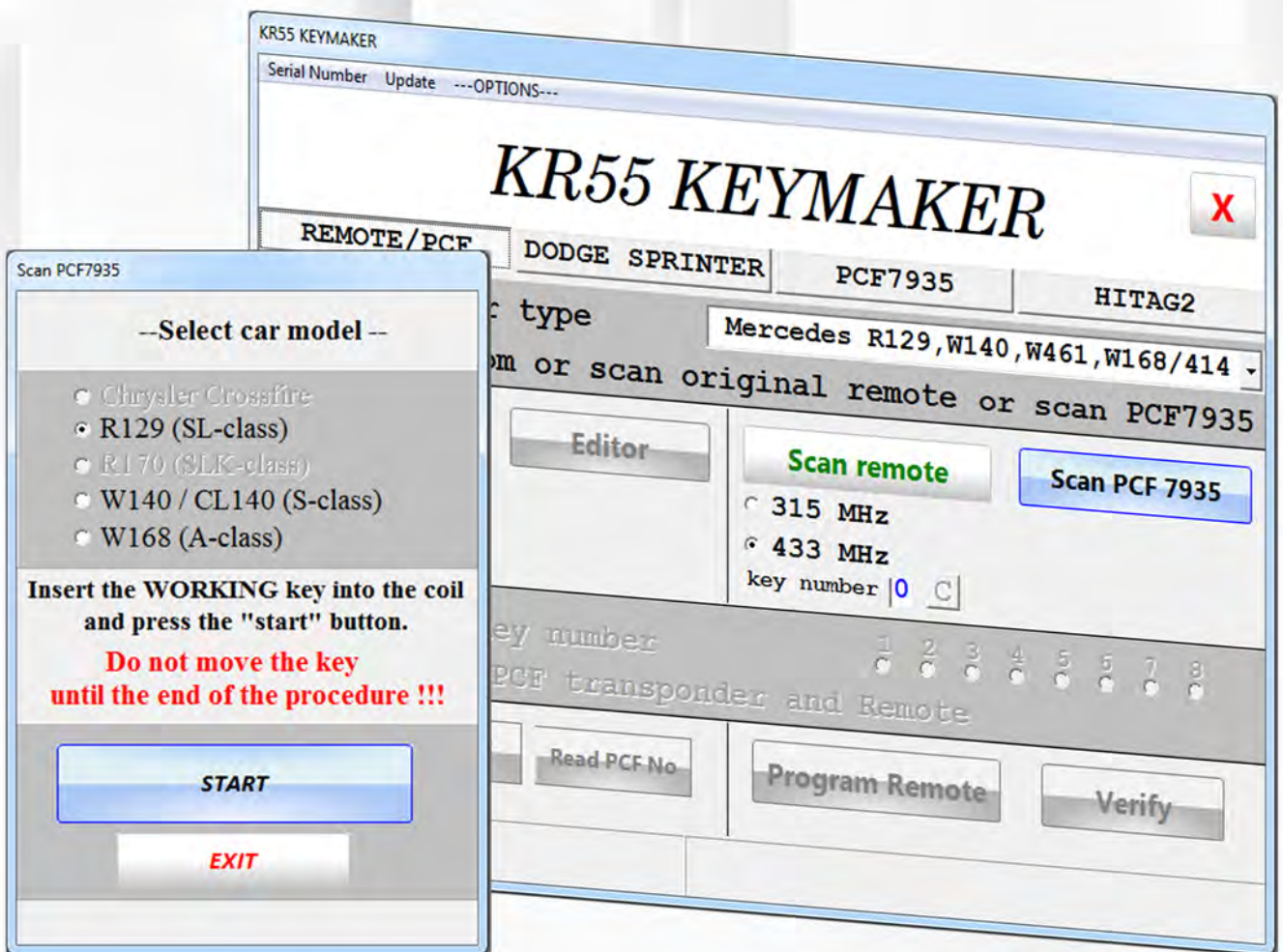
1. According to EEprom programmer manual, read and save EEprom to your computer.
2. Start KR55 KeyMaker software.
3. Select "PCF/REMOTE" tab. Select your vehicle.
4. Click "Load EE" button. Select EEprom file which you saved on step 1. Verify that your vehicle is properly identified (message in the left bottom corner). If there is "Error" message - EEprom wasn't read properly. Read and save EEprom again using Orange5, Smok (MBprog) or Carprog with proper Click'n Go adapter and start again from step 2.
5. Select available key slot in "Select key number" field.
6. Put a new remote in Keymaker's programming coil. Click "Program remote" button.

Dodge Sprinter, Freightliner



7. Press and hold “Unlock” button on the new remote until you will hear confirmation sound. Blue light will flash and message “OK, please click verify button” will appear.
8. Click “**VERIFY**” button. Now press any button on the new fob. “OK” message and sound will confirm successful programming.
9. Click “Load EE” button. Select EEPROM file which you saved on step 1. Select available key slot in “Select key number” field.
10. If new remote has GMT46 chip, click “**Program GMT46**” button. Once message “OK! Rewrite all chip” appears, chip programming is complete.
11. If new remote has PCF7936 chip, click “**Program PCF7936**” button. In a few seconds “WR and Verify OK. Dump EE changed” will appear. Now you need to rewrite modified dump back to EIS module, otherwise new key won't work.
12. Click “Save EE” button and save new EEPROM on your computer.
13. Cut the key blade.
14. Now go to the vehicle with new key. If key was correctly programmed, vehicle should start. Turn ignition off, pull key out. Quickly press any button on the remote 5-6 times. Insert key in ignition, turn ignition on (do not start). Quickly press any button on the remote few times (5-6 times). Turn ignition off, pull the key out. Remote should start working. Check all functions. Programming is complete.

SCAN PCF 7935

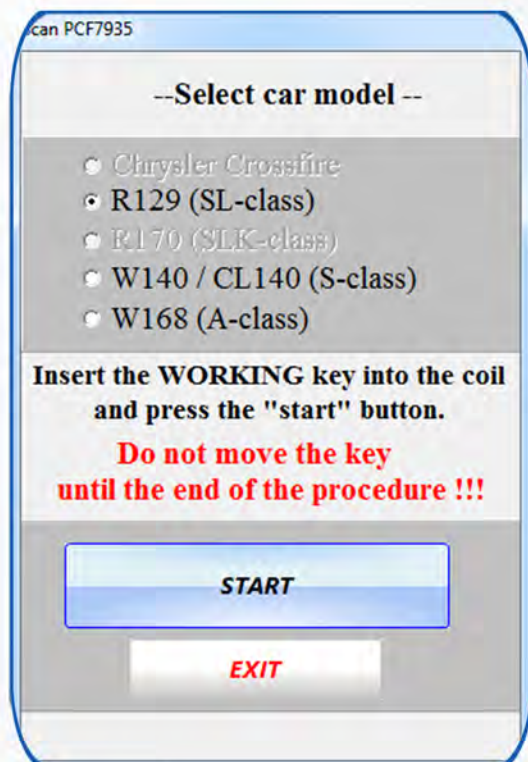
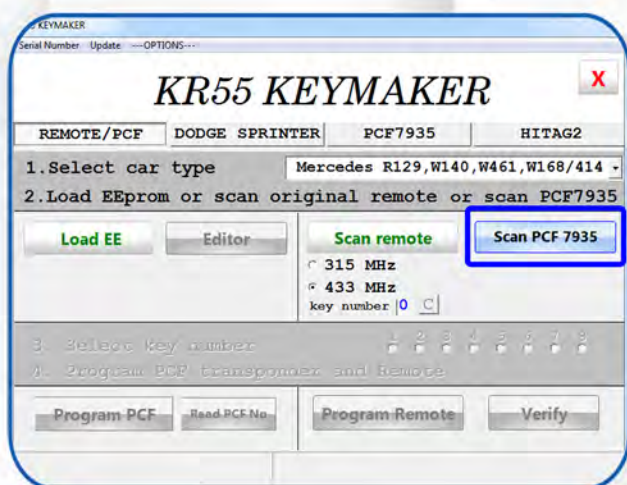


The "KR55 Keymaker" software from version 2.0 has the "Scan PCF 7935" option.

It allows you to program a new transponder and remote in a situation where the customer has only "Valet" key (key without a remote) like on picture bellow.

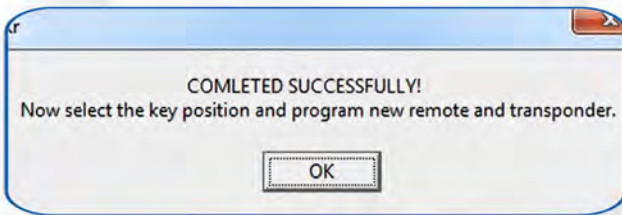
1 - Put original key with transponder into device coil.
Run the software and select the car model.

Next press "Scan PCF 7935"



2 - In the new window, select the car model again and press **Start**.

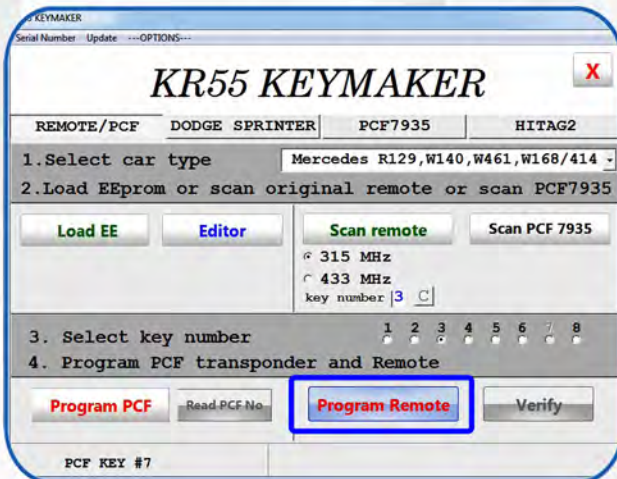
3 - Wait for the process to complete.



Don't touch the key during this time!

When the process is over, a message will inform us about it.

4 - Now select the frequency and the number of the new remote that you want to program and insert the new remote into the device coil. Next press **“Program Remote”**.

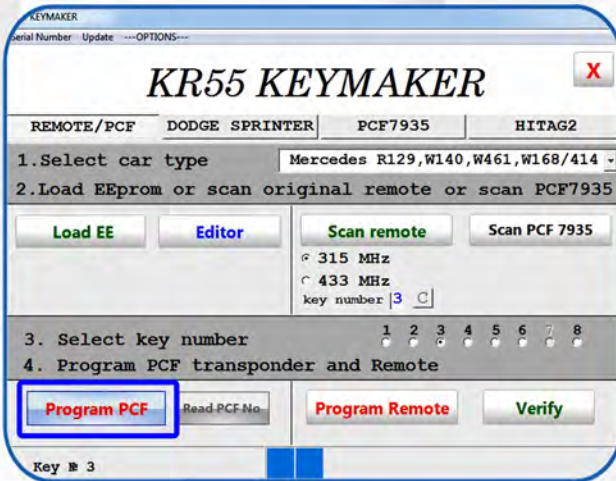
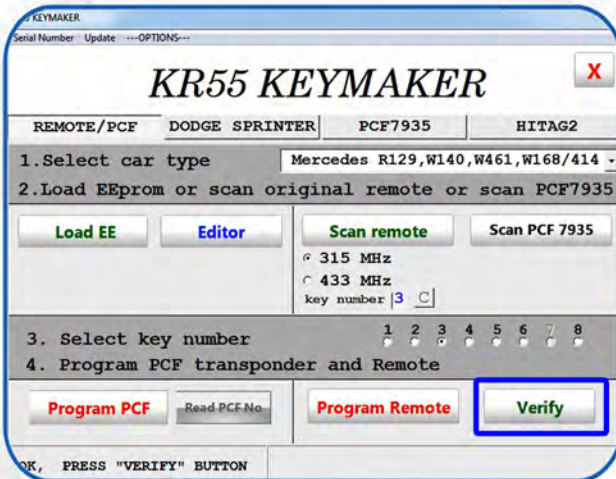


5 - Press and hold unlock button on the remote.

When you hear the sound confirming the correct programming of the remote, you can release the button.



6 - Now press **"Verify"** and press any button on the remote.



7 - Press **"Program PCF"** to program a new transponder.

REMEMBER TO USE THE PCF7935 TRANSPONDER!

8 - The car's running sound will confirm that the transponder has been correctly programmed.

